



Nintendo 3DS Upper Display Front Panel Replacement

Remove the upper display front panel to replace...

Written By: David Hodson



INTRODUCTION

Remove the upper display front panel to replace it or to access the components inside the upper display assembly.

If you are just replacing the upper display panel, you can just heat it up, pry it off, and install the new one. There is no need to take apart everything at the bottom to replace the glass.


TOOLS:


[Tweezers](#) (1)
[iFixit Opening Tool](#) (1)
[Spudger](#) (1)
[Phillips #00 Screwdriver](#) (1)
[Heat Gun](#) (1)

Step 1 — Back Cover



- Unscrew the four Phillips #00 screws along the top of the back cover.

 The screws are held in place by locking washers, and will not come out of the back cover.

 The comments section is full of unlucky souls who will tell you that the screws here through step 4 will strip incredibly easily. Press down fairly hard, and go slow.

Step 2



① Hold the device in one hand and turn it over.

- Grab the top edge of the back cover with your opposite hand so that the cover does not fall back into place.

① Flip the 3DS over again so that the back cover is facing up.

- Pull the back cover up and away from the rest of the device to remove it.

Step 3 — Battery



- Insert a plastic opening tool into the notch in the lower case above the battery.
- Pry the battery up with the plastic opening tool.
- Grab the top edge of the battery and lift it out of the lower case.

Step 4 — Lower Case



- Remove the nine 6.3 mm black Phillips screws from the lower case.

⚠ These screws will strip very easily unless you use the correct size bit. Apply pressure to the screws while turning to avoid stripping them.

- Remove the 2.4 mm silver Phillips screw above the game cartridge slot.

Step 5



- Lift the bottom edge of the lower case off the rest of the 3DS.

⚠ There are still two ribbon cables connecting the mother board to the case, so be sure not to pull the lower case all the way off.

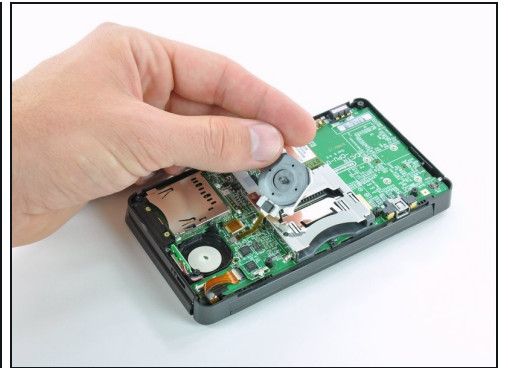
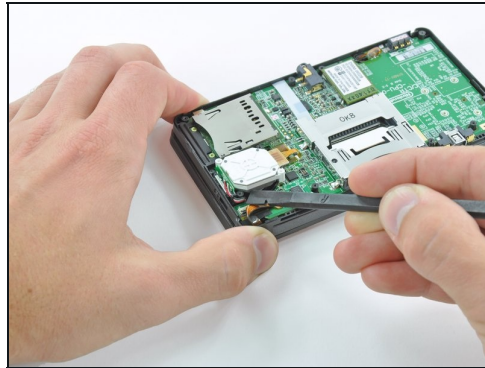
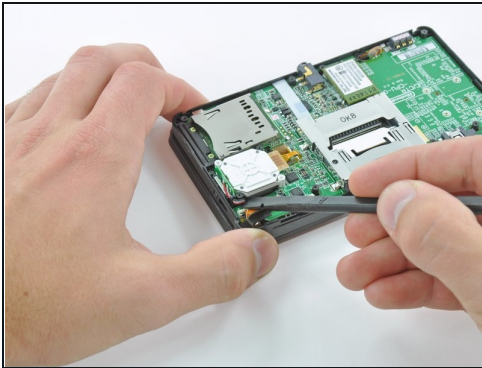
- Use a plastic opening tool to pry the shoulder button ribbon cables off their sockets on the motherboard.
- Remove the lower case from the device.

Step 6 — Circle Pad Joystick



- Remove the two 7.7 mm Phillips screws securing the back of the Circle Pad to the motherboard.

Step 7



- Use the flat end of a spudger to pry the back of the Circle Pad off the motherboard.
- Lift the Circle Pad joystick off the motherboard and lay it on its back so that the ribbon cable connector is accessible.

Step 8

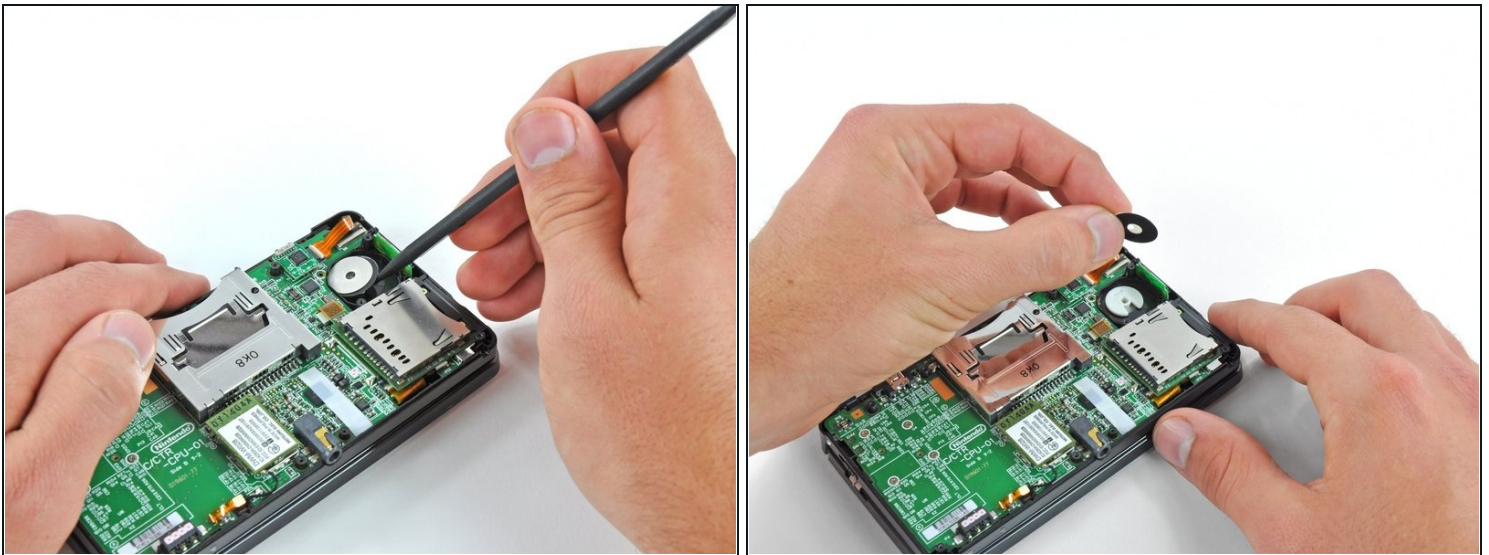


- Use the flat end of a spudger or your fingernail to flip up the retaining flap on the Circle Pad ribbon cable ZIF socket.

⚠ Be sure you are prying up on the hinged retaining flap, **not** the socket itself.

- Lift the Circle Pad joystick off the motherboard.

Step 9



ⓘ To decrease the chance of losing it during repairs, you may want to remove the two thin pads underneath the Circle Pad joystick.

- Use a spudger or screwdriver to lift the pads up and remove them from the device.

Step 10 — SD Board



- Remove the two 4.5 mm Phillips screws securing the SD board to the motherboard.

Step 11



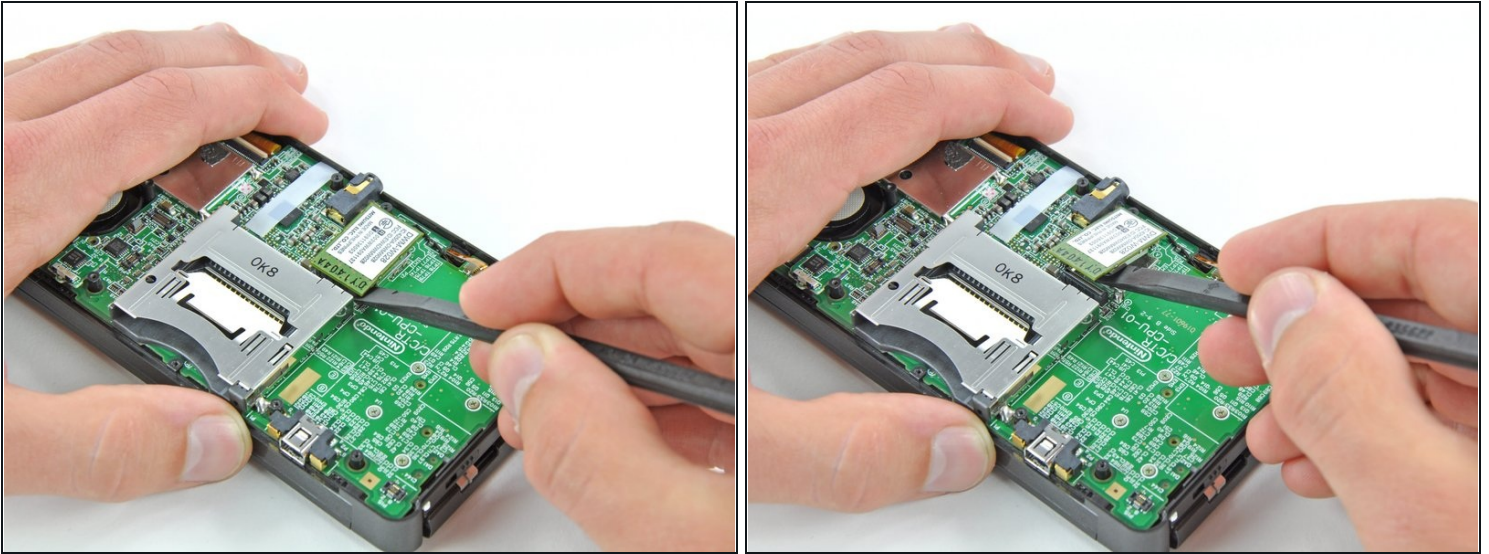
- Use the flat end of a spudger to pry the SD board ribbon cable connector off its socket on the motherboard.

Step 12



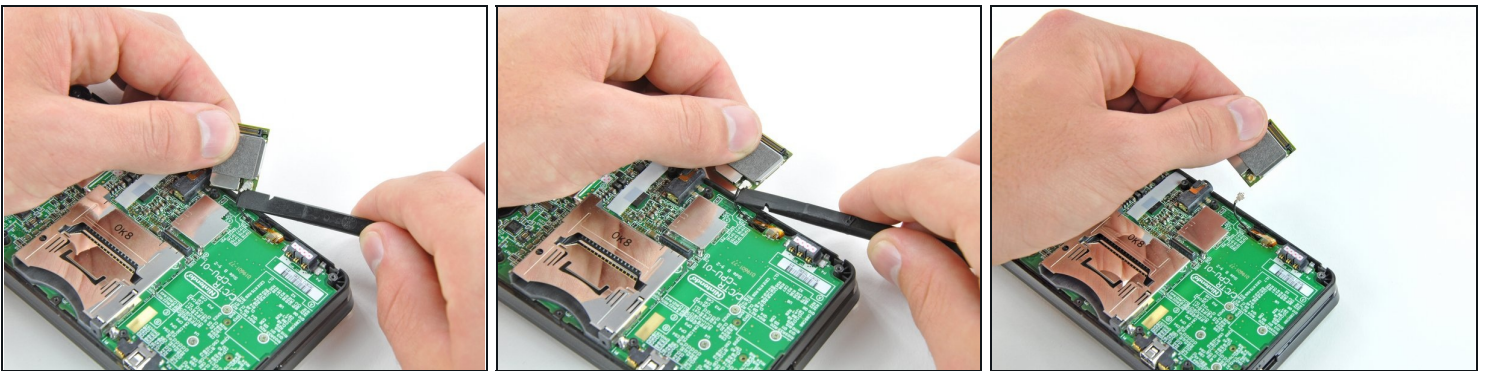
- Insert the flat end of a spudger between the SD board and the motherboard.
- Pry up **slowly** to loosen the SD board from the RF shield underneath it. If you pry too quickly, you may tear the shield or break its solder points.
- Run the spudger along the sides of the SD board to free it from the adhesive holding it in place.
- Once completely freed, lift the SD board straight off the motherboard.

Step 13 — Wi-Fi Board



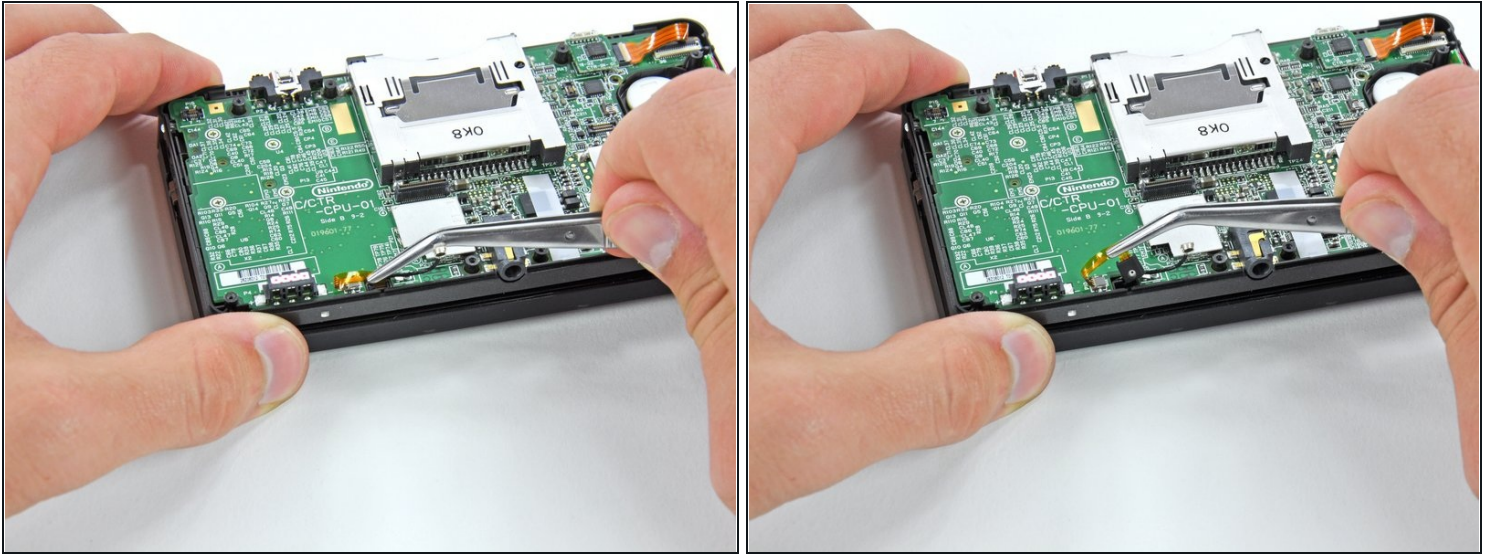
- Slide the flat end of a spudger under the corner of the Wi-Fi board, and lift it away from the motherboard.
- ⓘ The Wi-Fi antenna cable is still connected to the Wi-Fi board, so you cannot completely remove the Wi-Fi board yet.

Step 14



- ⓘ Lift the Wi-Fi board off the motherboard and rotate it so that the bottom side is facing up.
- Use the flat end of a spudger to pry the Wi-Fi antenna cable connector off its socket on the Wi-Fi board.
- Remove the Wi-Fi board from the device.

Step 15 — Motherboard Assembly



- Grasp the microphone ribbon cable near the microphone with a pair of [tweezers](#).
- Pull the microphone straight up out of the upper case.

Step 16

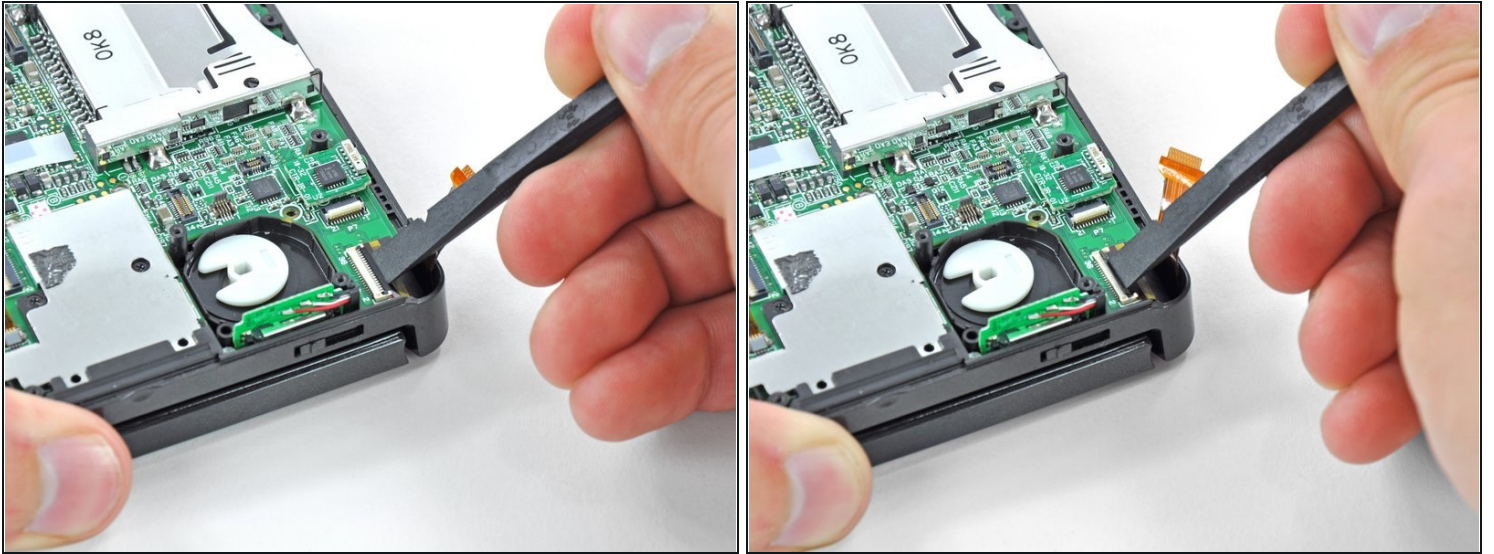


- Use the flat end of a spudger or your fingernail to flip up the retaining flap on the speaker assembly ribbon cable ZIF socket.

⚠ Be sure you are prying up on the hinged retaining flap, NOT the socket itself. Damaging the socket or cable will result in a 3DS that will blink its power LED when you press the power button - and do nothing else.

- Disconnect the speaker assembly ribbon cable with a pair of tweezers.

Step 17



- Use the flat end of a spudger or your fingernail to flip up the retaining flap on the camera ribbon cable ZIF socket.

⚠ Be sure you are prying up on the hinged retaining flap, **not** the socket itself.

- ☑ When reassembling, note that the gold contacts face toward the motherboard (as opposed to the camera cable's gold contacts facing away).

Step 18



- Remove seven Phillips screws securing the motherboard to the upper case:
 - Four 2.5 mm gold screws
 - Two 3.5 mm black screws
 - One 2.5 mm silver screw
 - ⓘ When you remove this screw the volume slider can fall out.
- Lift the side of the motherboard that sits along the bottom edge of the 3DS.

Step 19



- ⓘ Continue lifting the motherboard assembly and rotate it until it is resting next to the rest of the device.
- Use the flat end of a spudger or your fingernail to flip up the retaining flap on the LCD ribbon cable ZIF socket.

⚠ Be sure you are prying up on the hinged retaining flap, **not** the socket itself. Damaging the socket or cable will result in a 3DS that won't have a functional top screen.

Step 20



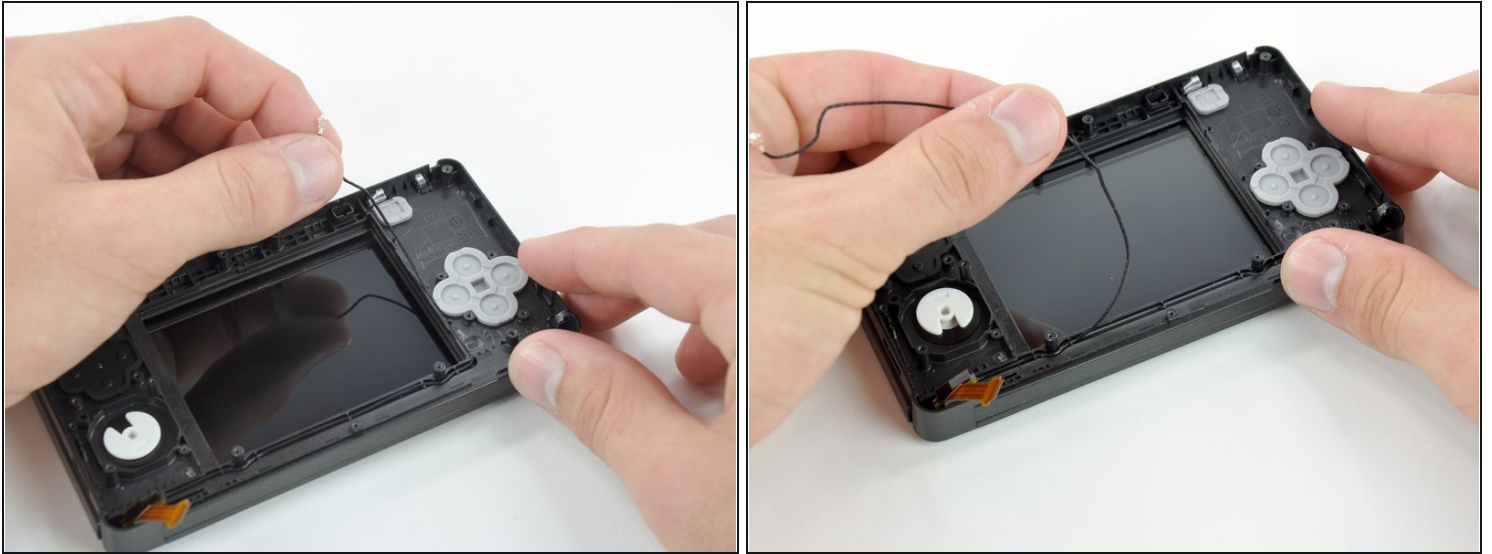
- Remove the motherboard assembly from the rest of the device.

Step 21 — Upper Display Front Panel



- Before continuing with disassembly, use a pair of [tweezers](#) to remove the clear plastic diffuser for the wireless notification LED. The small piece is likely to fall out on its own, and may be difficult to find if it lands on the floor.

Step 22



- De-route the Wi-Fi antenna cable from the bottom of the upper case.
- ⓘ This step is not necessary if you are only replacing the front panel; however, the replacement of the upper screen, speakers, cameras, and Wi-Fi antenna require it.

Step 23



- Heat the edges of the upper display front panel with a hair dryer or heat gun to soften the adhesive holding it to the display bezel.
- Begin prying the edges of the front panel off with a plastic opening tool.

⚠ If it is difficult to pry the front panel off, reheat the area you are working on with the heat gun, and then return to prying. Applying excessive force could crack the front panel.

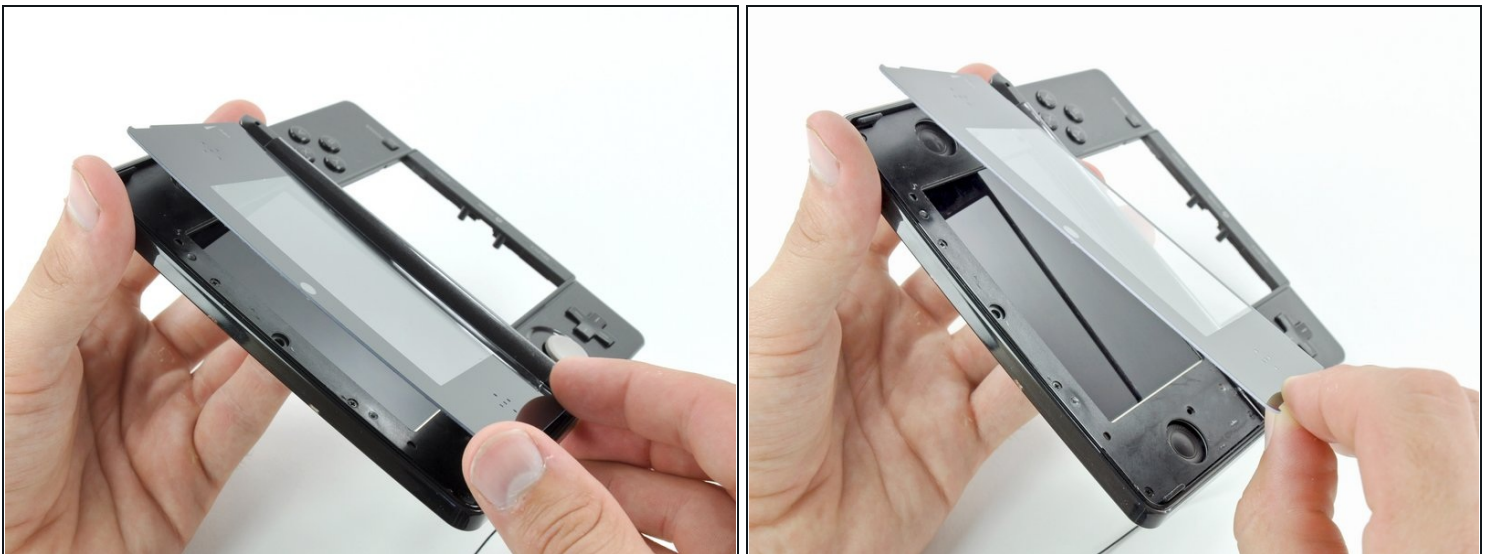
Step 24



- Continue prying the remaining sides of the front panel by sliding the plastic opening tool down each edge.

⚠ Too little heat will result in excessive bending/breaking of the front panel, and too much will melt and destroy the LCD underneath. Take your time.

Step 25



- With all of the sides free, lift the upper display front panel off the display bezel.

To reassemble your device, follow these instructions in reverse order.