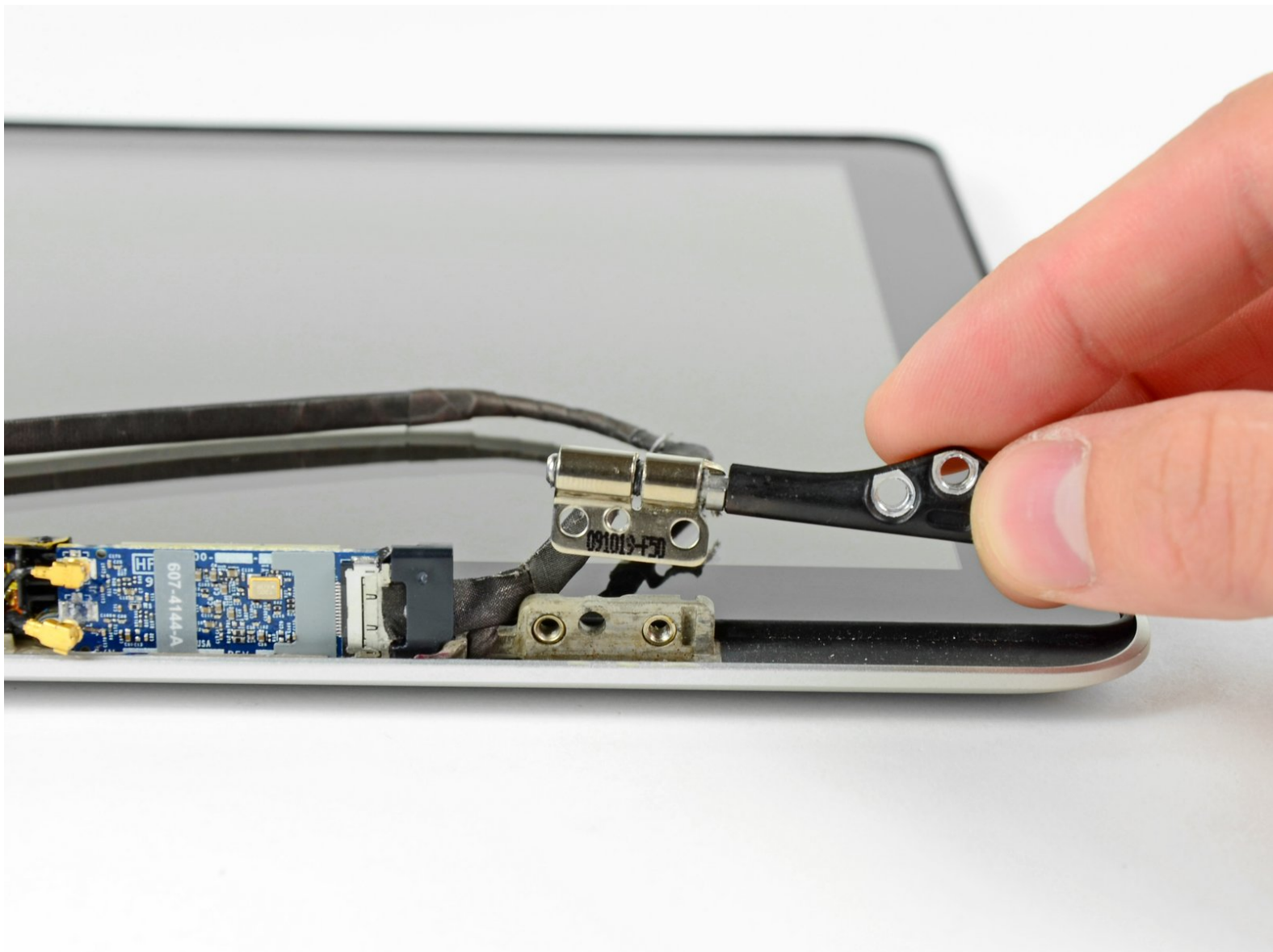




MacBook Pro 13" Unibody Mid 2009 Right Clutch Hinge Replacement

Replace the right clutch hinge in your MacBook Pro 13" Unibody Mid 2009.

Written By: Andrew Bookholt



INTRODUCTION

Use this guide to replace a broken right clutch hinge.



TOOLS:

- [Phillips #00 Screwdriver](#) (1)
 - [Spudger](#) (1)
 - [T6 Torx Screwdriver](#) (1)
-

Step 1 — Remove the lower case screws



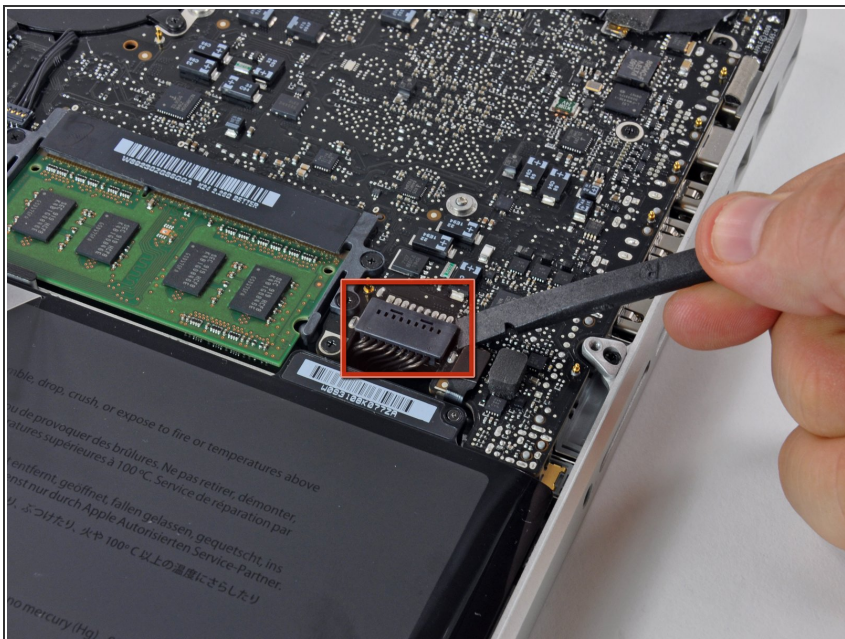
- Remove the following 10 screws securing the lower case to the MacBook Pro 13" Unibody:
 - Seven 3 mm Phillips screws.
 - Three 13.5 mm Phillips screws.

Step 2 — Lift the lower case away



- Slightly lift the lower case and push it toward the rear of the computer to free the mounting tabs.

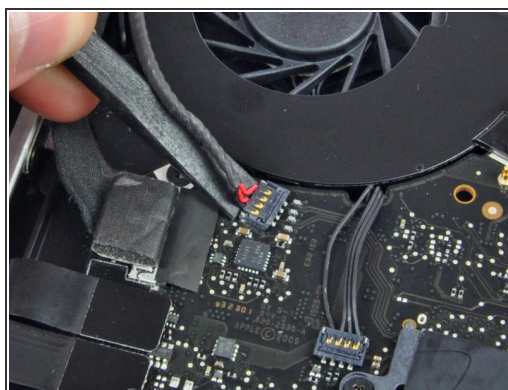
Step 3 — Battery



⚠ For precautionary purposes, we advise that you disconnect the battery connector from the logic board to avoid any electrical discharge.

- Use the flat end of a spudger to lift the battery connector up out of its socket on the logic board.

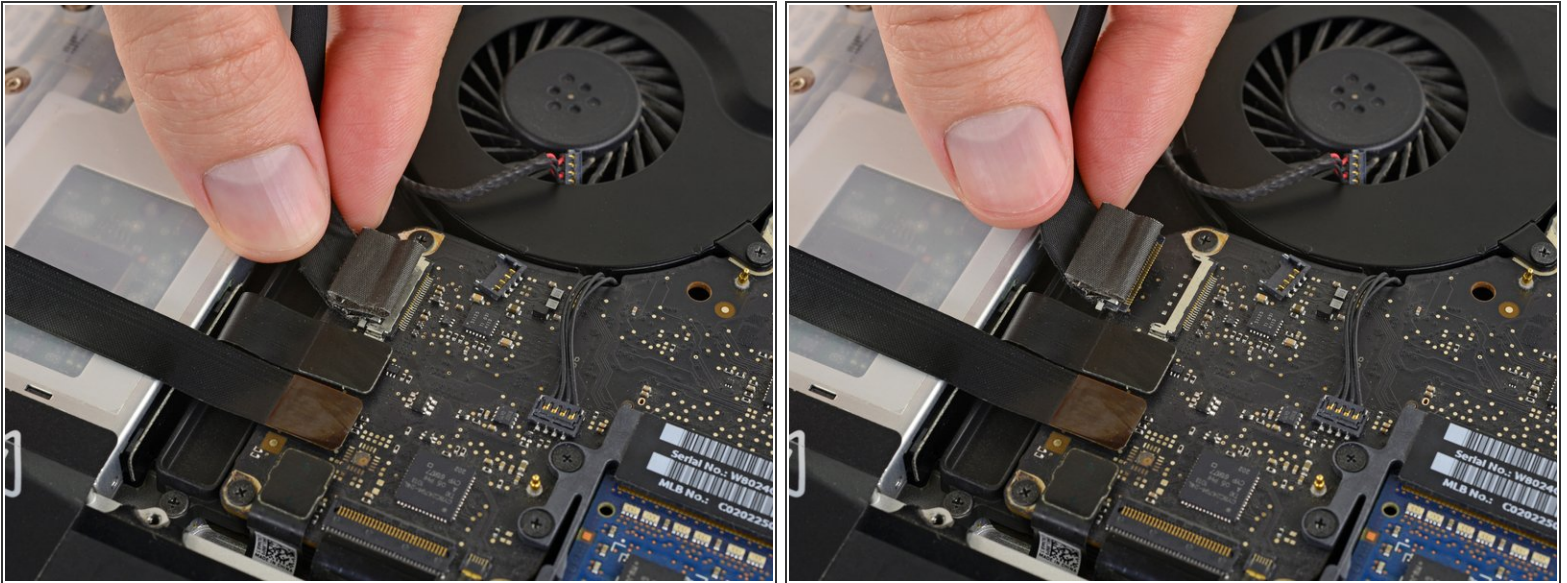
Step 4 — Display



- Use the flat end of a spudger to pry the subwoofer/right speaker cable connector up off its socket on the logic board.

⚠ Be very careful to pry under the connector as shown, and not under the socket itself. Otherwise you may accidentally separate the socket from the logic board.

Step 5



- Disconnect the camera cable by sliding it horizontally out of its socket.

⚠ Pull the cable parallel to the surface of the logic board, in the direction of the optical drive. Do **not** pull straight up, or you will destroy the connector.

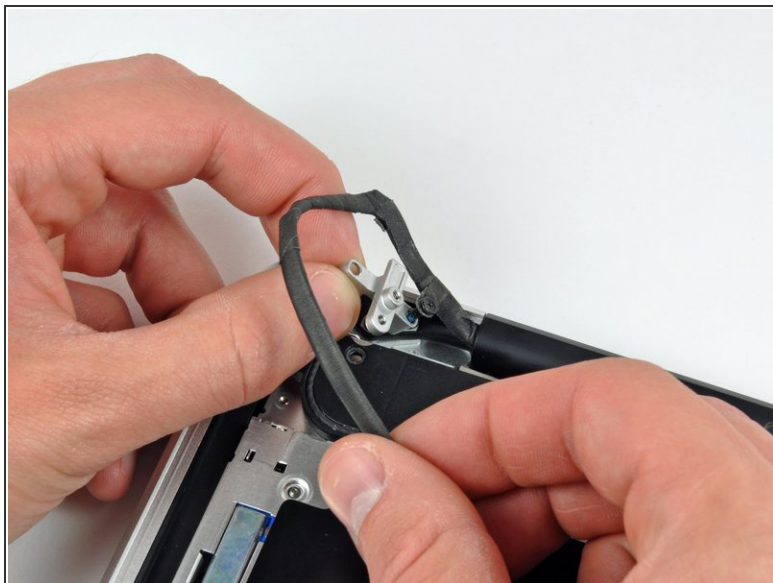
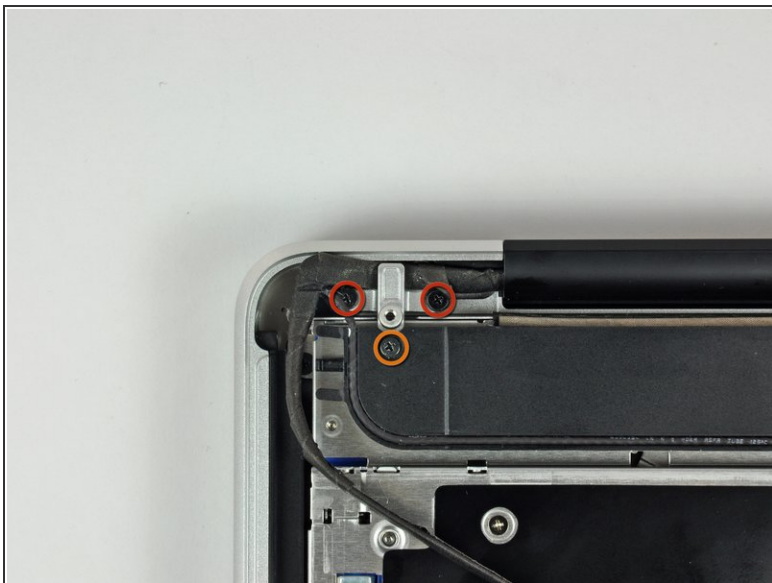
- If you see a [small plastic retainer](#) stuck to the logic board that prevents the camera cable from sliding out, peel it up carefully from the logic board. Apply a little heat from a hair dryer or heat gun if necessary to help soften the adhesive holding it in place. **Do not** attempt to forcibly disconnect the cable with the retainer in place.
- If you still have trouble, use the point of a spudger to push at each side of the connector and ["walk" it slowly from its socket](#).

Step 6



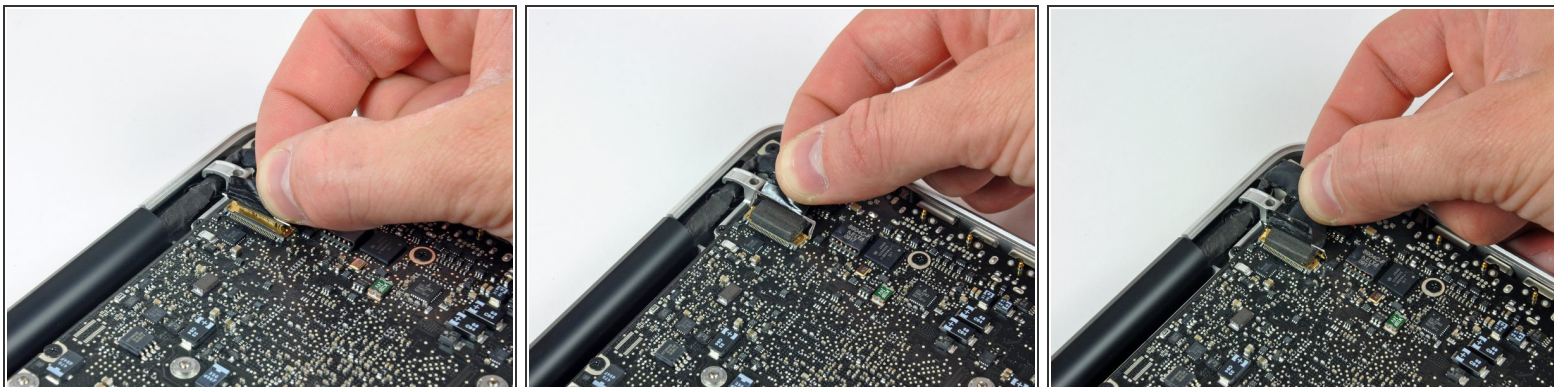
- De-route the camera data cable from the channel in the optical drive.

Step 7



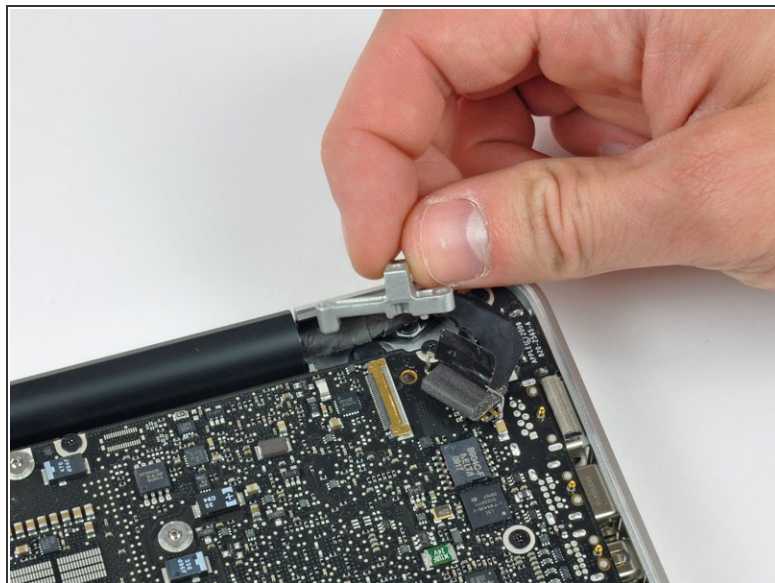
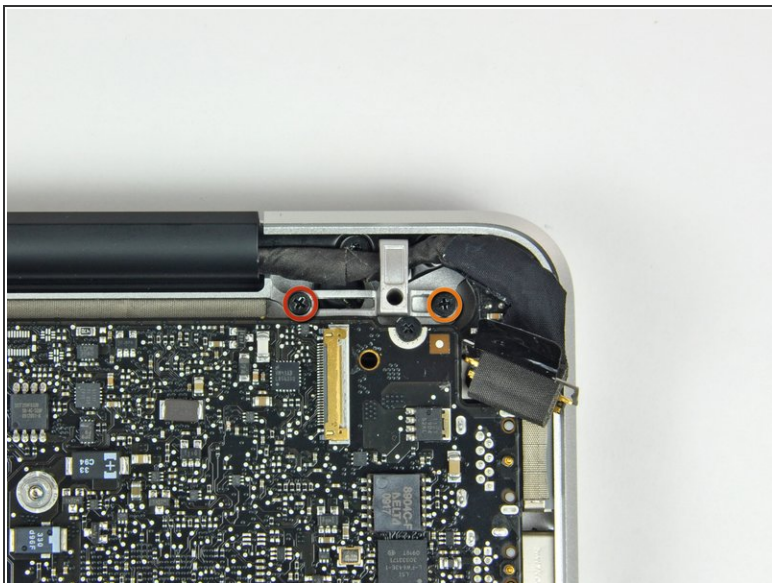
- Remove the following screws securing the camera data cable and right speaker to the upper case:
 - Two 8 mm Phillips screws.
 - One 4mm Phillips screw.
- ⓘ One of the 8 mm Phillips screws will likely remain captive in the camera cable ground loop.
- Slide the camera cable bracket out from under the subwoofer and remove it from the computer.

Step 8



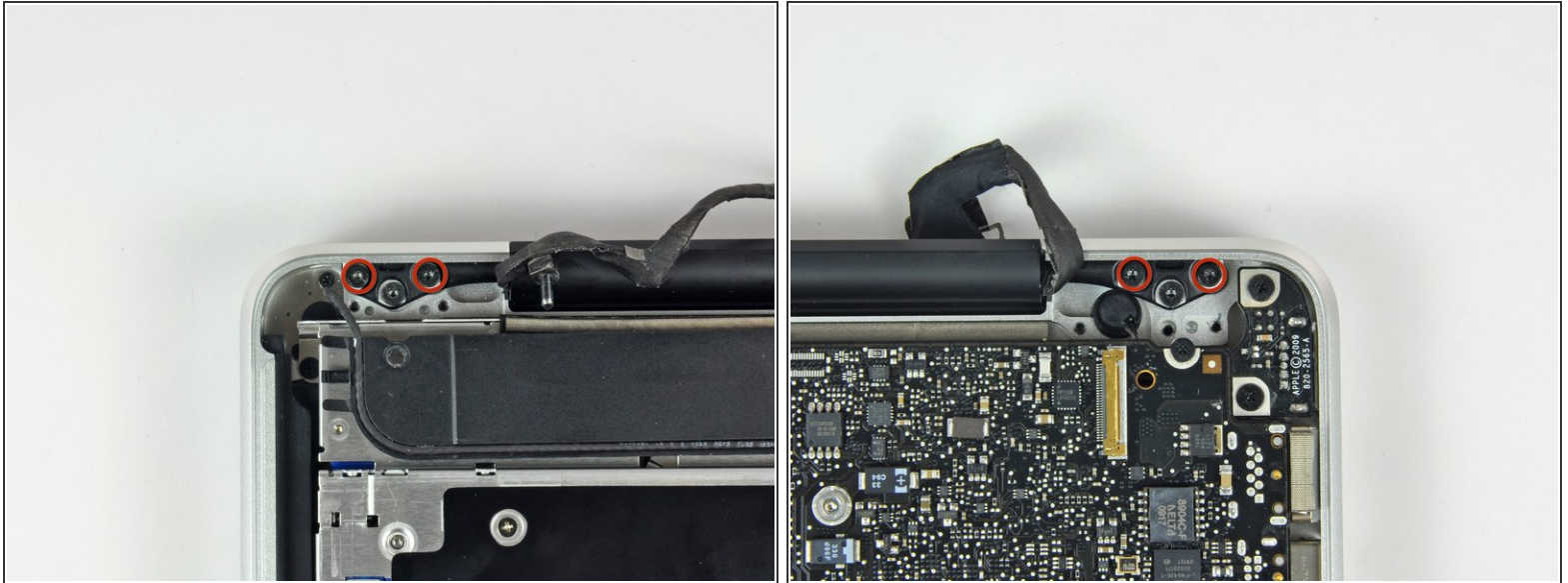
- Grab the plastic pull tab secured to the display data cable lock and rotate it toward the DC-in side of the computer.
- Pull the display data cable connector straight away from its socket.
- ⓘ Make sure to pull the connector straight away and not straight up from its socket.

Step 9



- Remove the following two screws securing the display data cable bracket to the upper case:
 - One 7 mm Phillips screw.
 - One 5 mm Phillips screw.
- Lift the display data cable bracket out of the upper case.

Step 10



- Use your Torx driver to remove the two outer 6.5 mm screws securing each of the two display brackets to the upper case (4 screws total).
- ⓘ Mid 2009 models require a T6 Torx driver, while Mid 2010 models require a T8.

Step 11



- Open your MacBook so the display is perpendicular to the upper case.
- Place your opened MacBook on a table as pictured.
- While holding the display and upper case together with your left hand, use your Torx driver to remove the remaining 6.5 mm screw from the lower display bracket.

Step 12



⚠ Be sure to hold the display and upper case together with your left hand. Failure to do so may cause the freed display/upper case to fall, potentially damaging each component.

- Remove the last remaining 6 mm Torx screw securing the display to the upper case.

Step 13



- Grab the upper case with your right hand and rotate it slightly toward the top of the display so the upper display bracket clears the edge of the upper case.
- Rotate the display slightly away from the upper case.

Step 14



- Lift the display up and away from the upper case, minding any brackets or cables that may get caught.

Step 15 — Clutch Cover



- Grab the clutch cover as shown and slide it toward the right side of the display.

 It should move about 1/4" and stop. Don't force it beyond this point.

Step 16



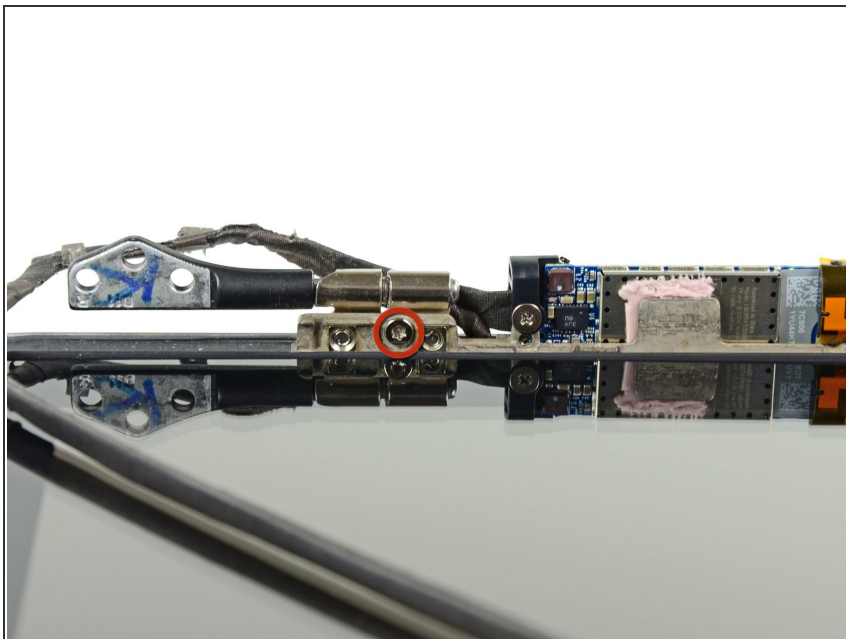
- Gently rock the clutch cover back and forth on its long axis while pulling it away from the display.
- Do this action along the length of the clutch cover until you can lift it off the framework attaching it to the display.

Step 17



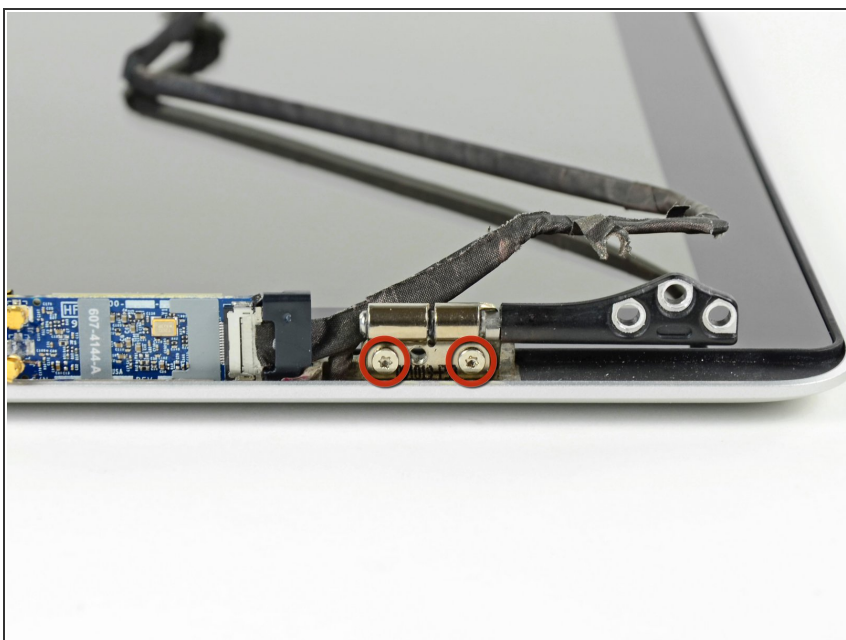
- Remove the clutch cover from the display.

Step 18 — Right Clutch Hinge



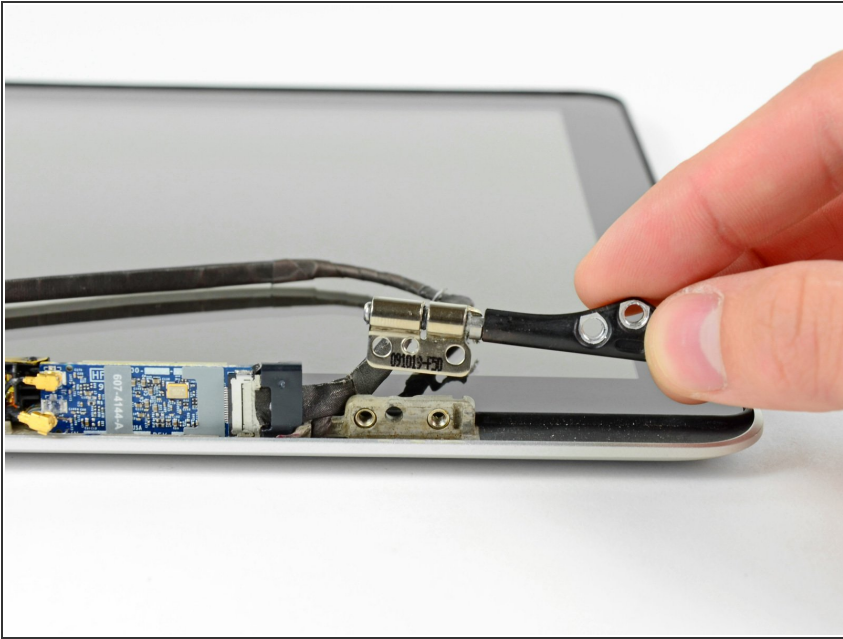
- Remove the single 5.2 mm T6 Torx screw securing the right clutch hinge nearest the display glass.

Step 19



- Remove the two remaining 5.2 mm T6 Torx screws securing the right clutch hinge to the display.

Step 20



- Remove the right clutch hinge.

To reassemble your device, follow these instructions in reverse order.