



Panasonic KX-TGE233 TEL Port Replacement

This guide will give you instructions on how to replace a faulty TEL Port in your Panasonic KX-TGE233 docking station.

Written By: Jesse Satterwhite



INTRODUCTION

The TEL port is where the TEL cable plugs into on the device. If you've followed the symptoms listed in our [troubleshooting guide](#) and have determined that the TEL port is the issue, you'll need to follow this guide to reach it and replace it. Prior to beginning this guide, make sure you have access to a Philips Size #0 screwdriver and a soldering iron. Both will be needed to open the device and replace the component.



TOOLS:

- [Phillips Size 0 Screwdriver](#) (1)
 - [Soldering Iron](#) (1)
-

Step 1 — Base Front Panel Assembly



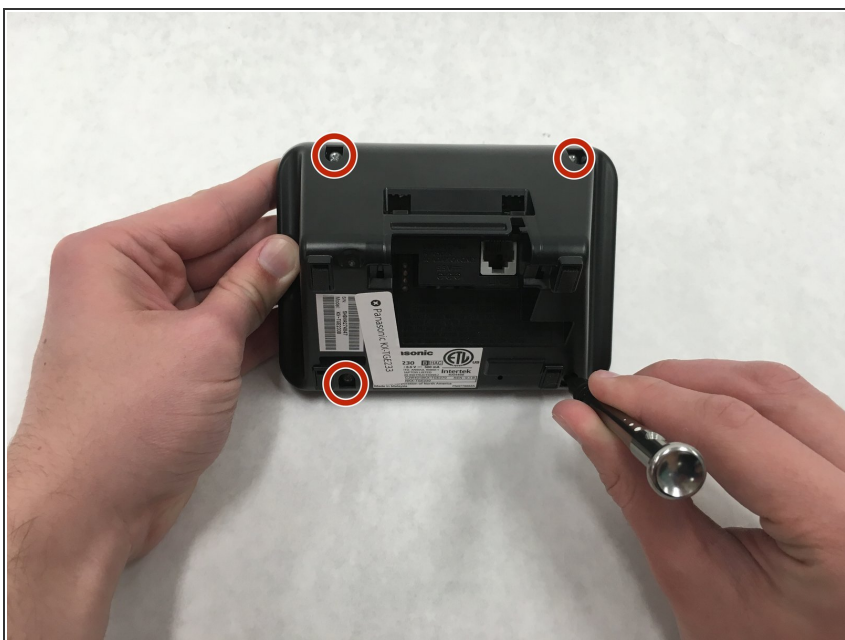
- To fix this component, we'll need to work with the main docking station. This is the one with the answering machine and the TEL line.

Step 2



- To start, we'll need to work with objects on the bottom of the device, so begin by flipping the device over.

Step 3



- To open the main docking station, you'll need to remove four 11 mm Philips #0 screws.

Step 4



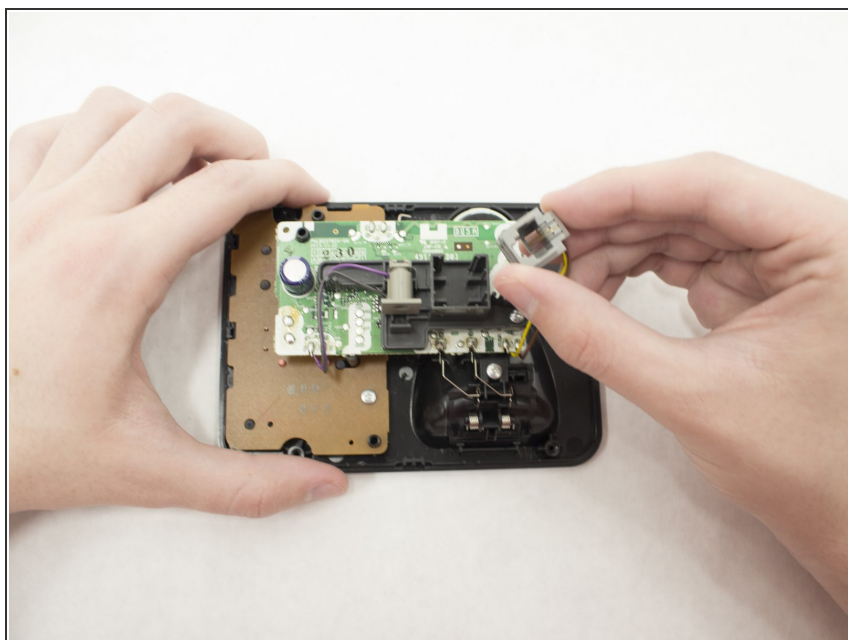
- With the screws removed, you can use a spudger to aid in removing the back from the device.
- ⓘ Levering the back by the spudger may break the tool!

Step 5



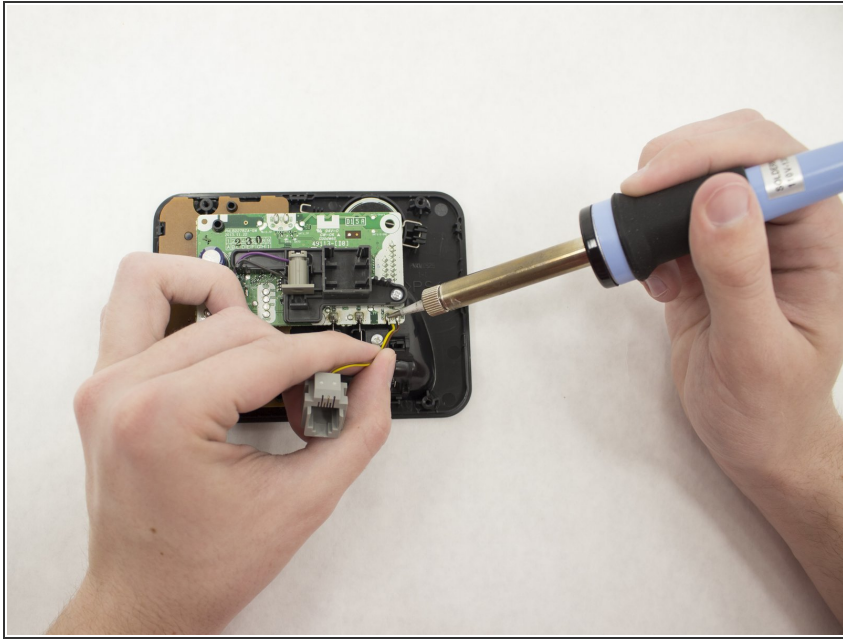
- With the back removed, we now have direct access to all other components in the main docking station.

Step 6 — TEL Port



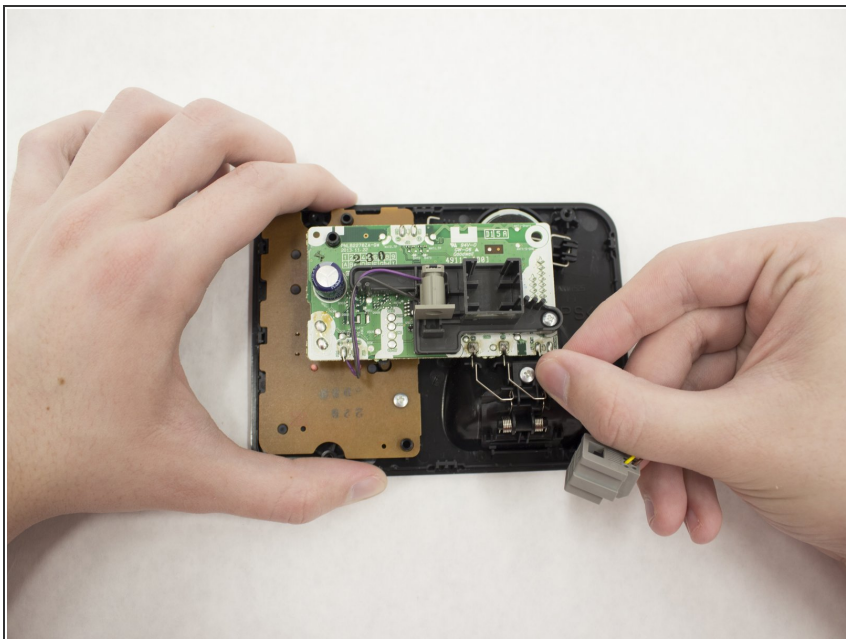
- For easier access to its wires, you can easily remove the TEL port from its resting point in the device.

Step 7



- Use a soldering iron to loosen the solder on the contact points.
- ⓘ For tips on how to solder, use the following guide: [Technique: How To Solder and Desolder Connections](#)

Step 8



- From here, you can remove the faulty port from the device. If the soldering step has been completed successfully, this should require minimal effort.

To reassemble your device, follow these instructions in reverse order.