



# Omaker M4 Port Cover Replacement

In this repair guide, we will show how to remove the Port Cover from the inside of the speaker.

Written By: Obaida Matar



---

## INTRODUCTION

The Port Cover helps preventing water splashing inside the charging and AUX port. It is important to keep the cover in good shape to prevent damaging the internal components.

---

### TOOLS:

- [Magnetic Pickup Tool](#) (1)
  - [T6 Torx Screwdriver](#) (1)
  - [Tweezers](#) (1)
-

## Step 1 — Back Case



- Flip the device over so the front of the speaker is facing down. Make sure to place the speaker on a flat surface

## Step 2



- Use a T6 Torx screwdriver to remove the four 9mm screws from the back of the device.

## Step 3



- Use a magnet to remove the screws after unscrewing them and place them aside.

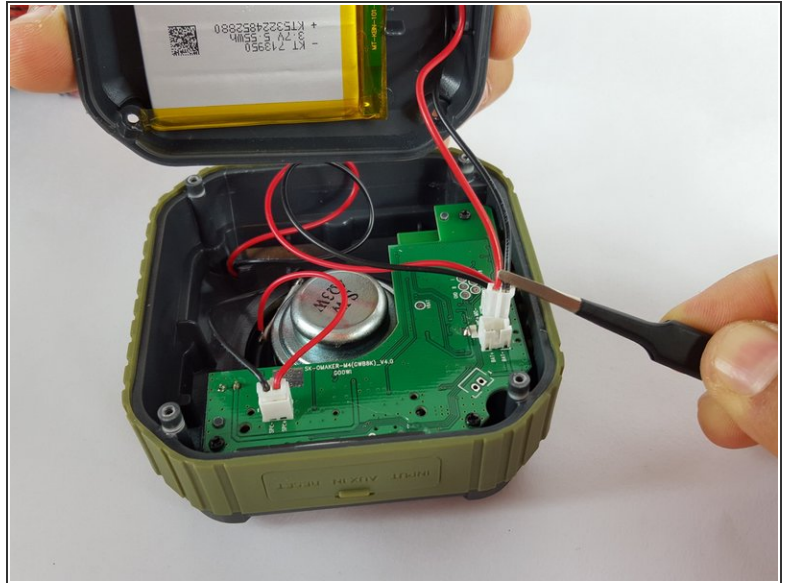
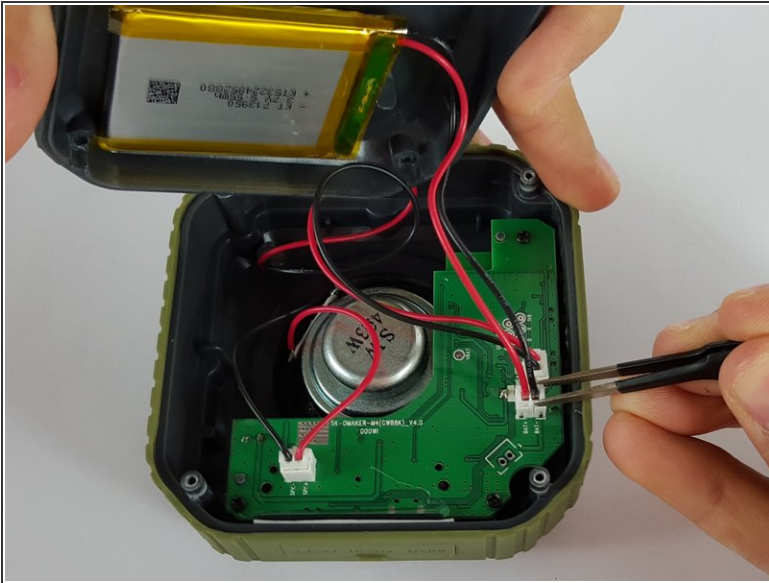
## Step 4



- Carefully remove the back cover without breaking the battery wire.



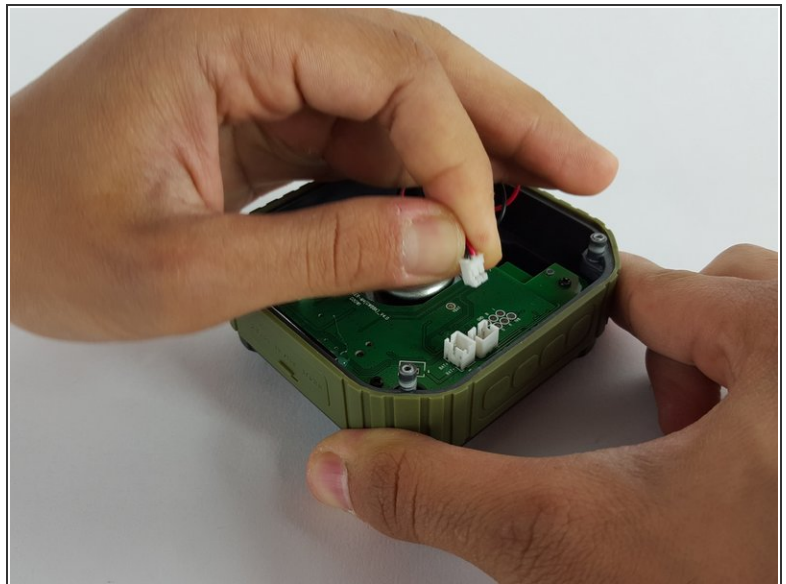
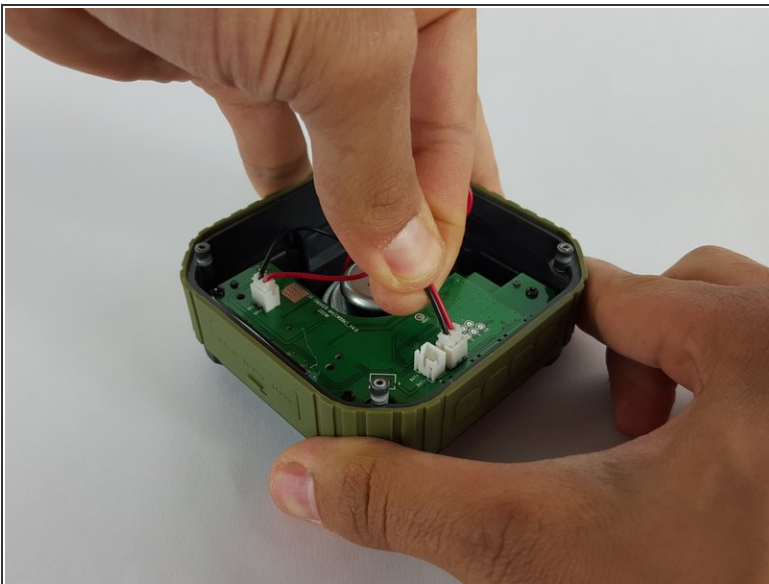
## Step 5



- Remove the end of the battery connection from the motherboard by holding the end of the wire and carefully pulling it out of the socket using tweezers.

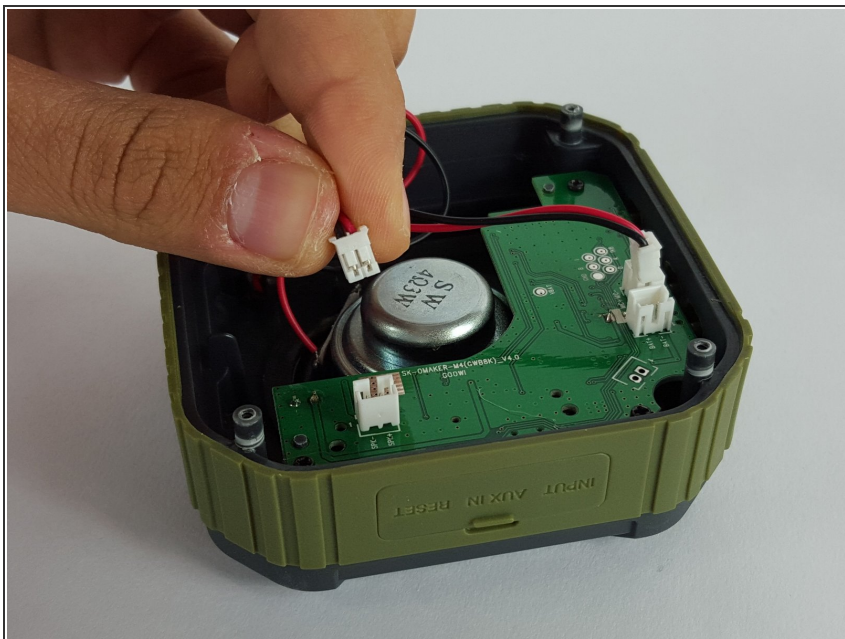
**i** The battery is still attached to the back cover.

## Step 6 — Motherboard



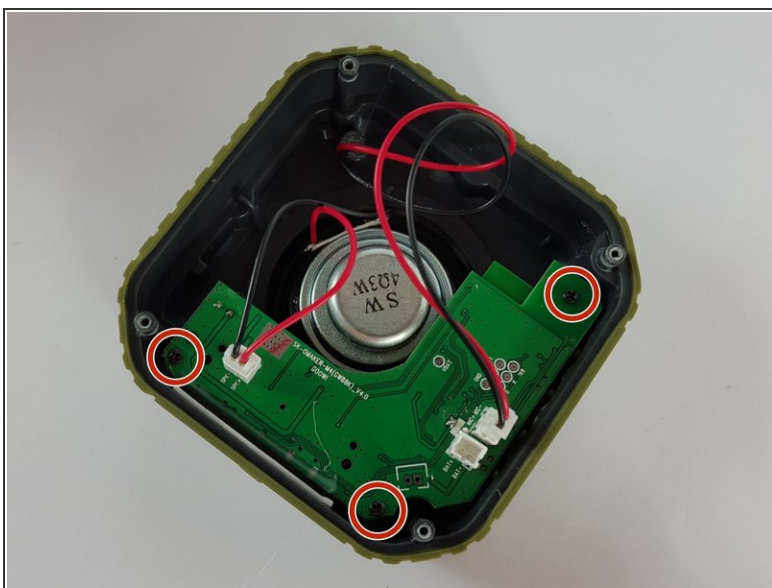
- Remove the mic wire by carefully pulling the plug out of the socket.

## Step 7



- Remove the speaker wire by carefully pulling the plug out of the socket on the motherboard.

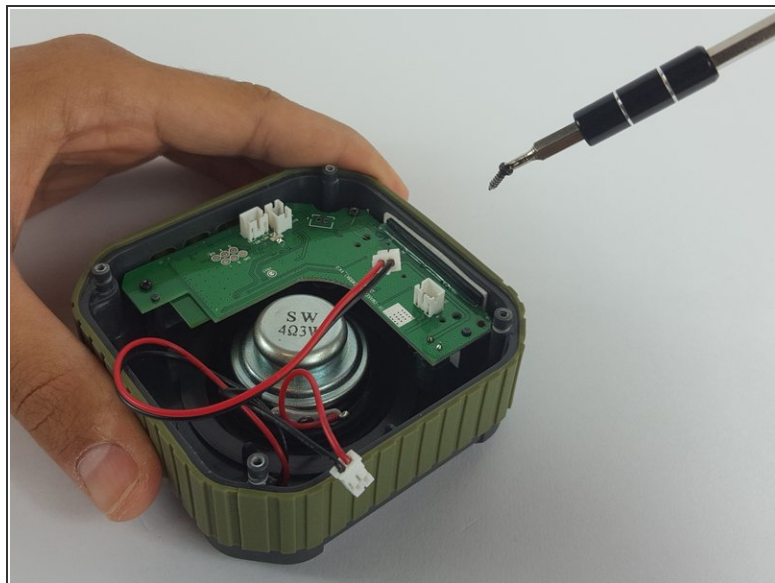
## Step 8



- Use Phillips PH00 screwdriver to remove the three screws holding the motherboard in place.

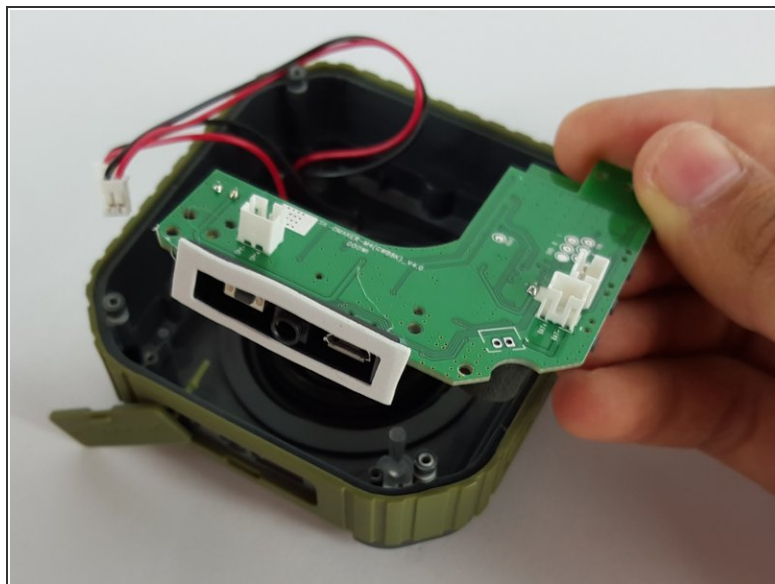
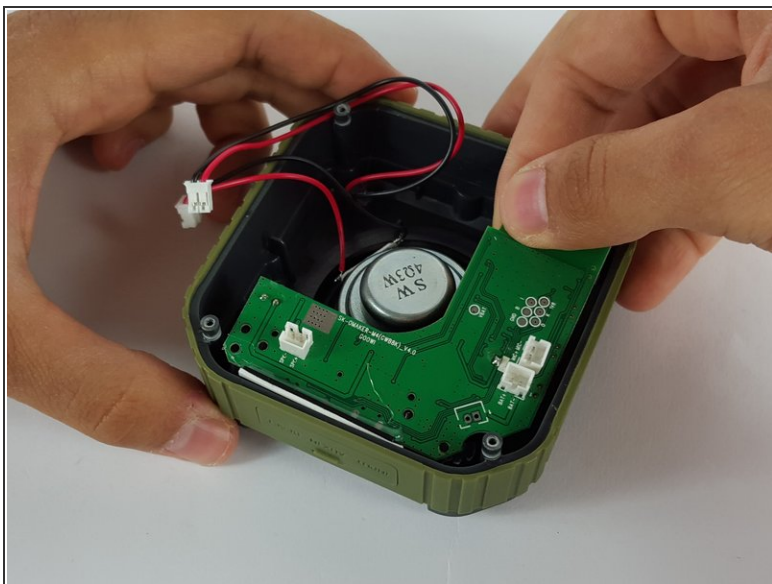


## Step 9



- Remove the screws using the screwdriver.
- i** Since the screws that hold the motherboard in place are smaller, the screwdriver is able to pick them up.

## Step 10



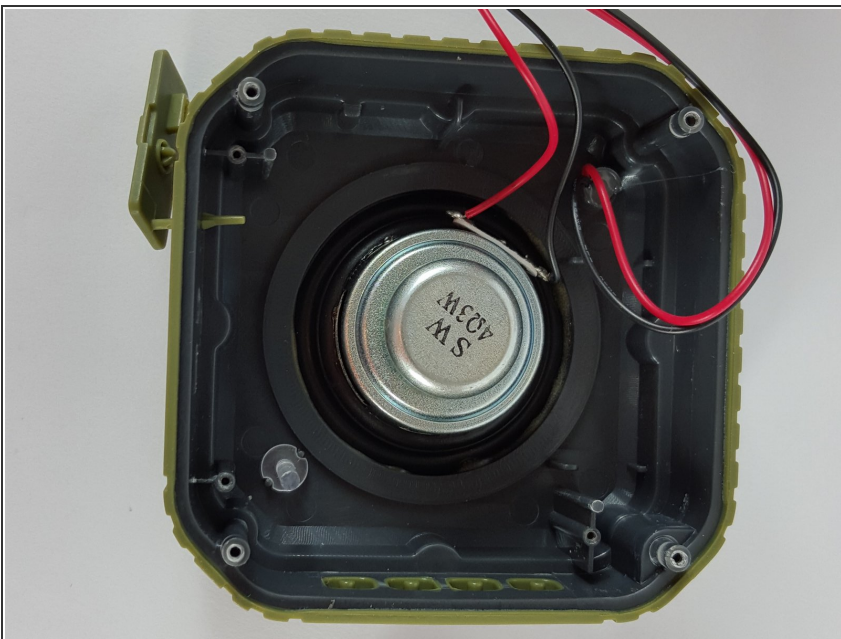
- Carefully remove the motherboard with your hand by lifting it from the device.

## Step 11 — Port Cover



- Separate the port cover from the device using your hands.

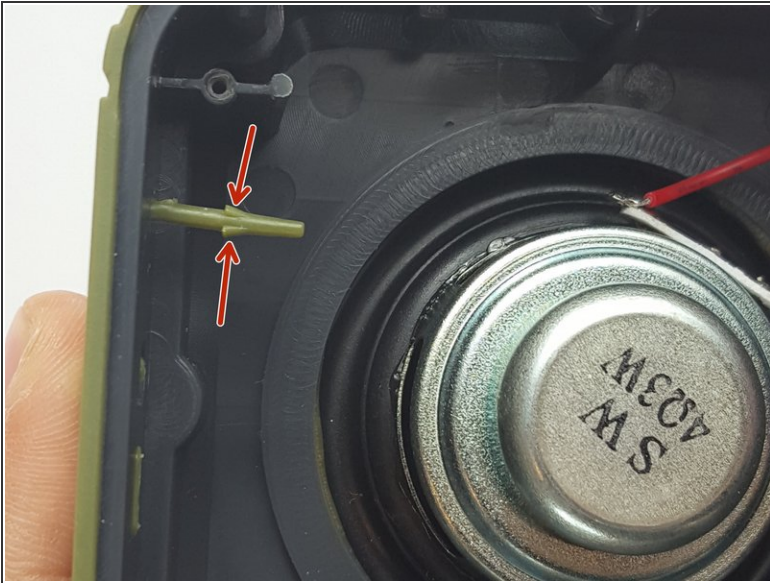
## Step 12



- Orient the device so the port cover is on your left.



## Step 13



- Using Tweezers, pinch the larger part of the stem

## Step 14



- Use your left hand to pull while at the same time use the tweezers to compress the stem, carefully

---

remove the port cover from the device.

---

To reassemble your device, follow these instructions in reverse order.