



# Amazon Echo Power and Speaker Driver Board Replacement

This guide shows how to replace the power and...

Written By: Alexander Albert



# INTRODUCTION

This guide shows how to replace the power and speaker driver board in the Amazon Echo. This board is responsible for delivering power to the various components of the Echo and also delivers the appropriate signals to the woofer and tweeter. This guide may prove helpful if your Echo has issues turning on, sounds distorted, or won't make any sound.


## TOOLS:

TR10 Torx Security Screwdriver (1)


Heavy-Duty Spudger (1)

## Step 1 — Power and Speaker Driver Board

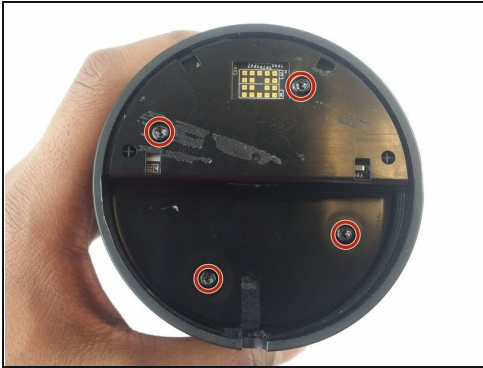


 **Power off and unplug your Echo before disassembly.** Failure to do so could result in injury or damage to the device.

- Peel off the rubber footing from the bottom of the Echo.

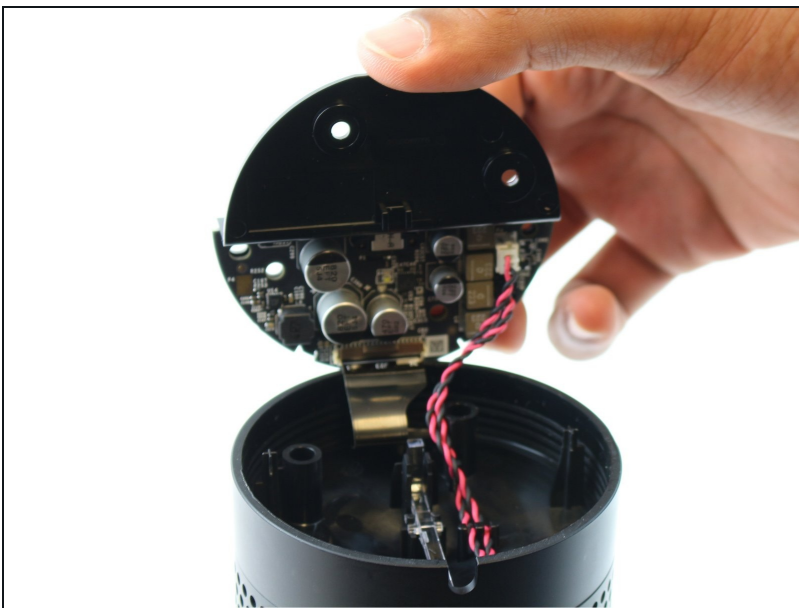
 **Do not pull the rubber footing too hard, as it could stretch out of shape. Use a spudger to help remove the foot if you have any trouble.**

## Step 2



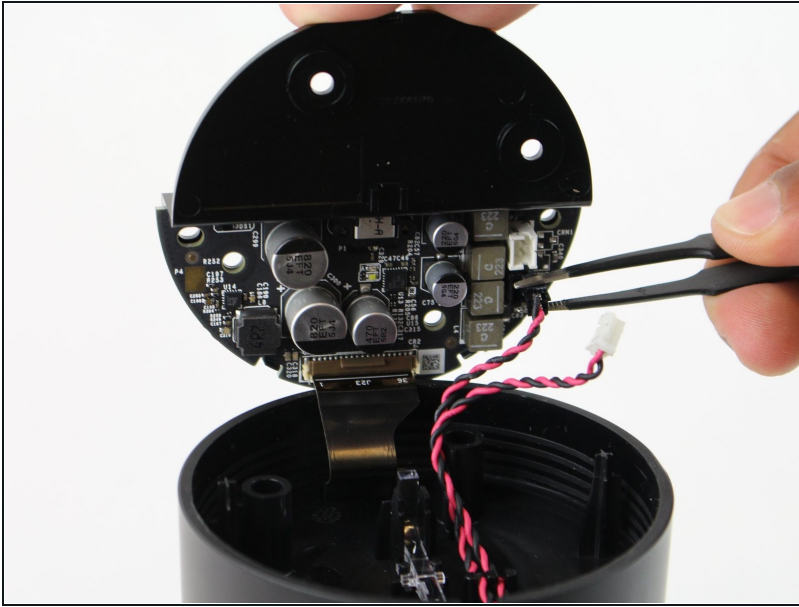
- Remove the four 42.8 mm T10 Torx screws from the bottom of the Echo.

## Step 3



- Slowly lift the plate containing the board. Be careful not to disconnect any of the wires.

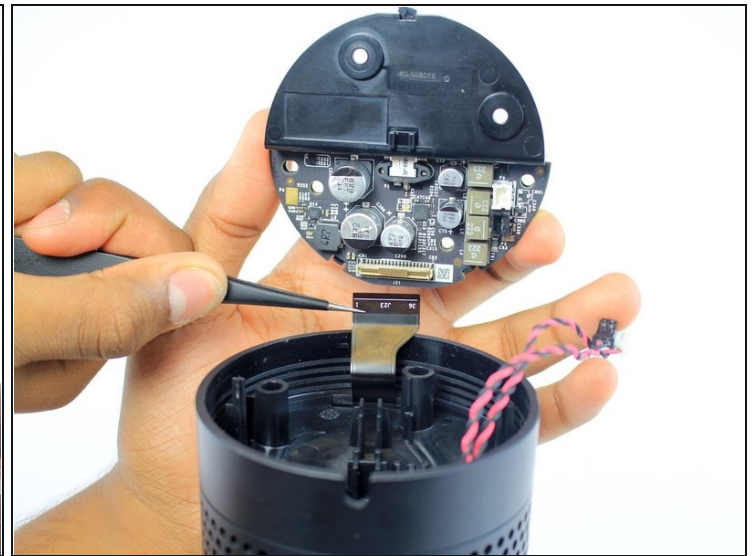
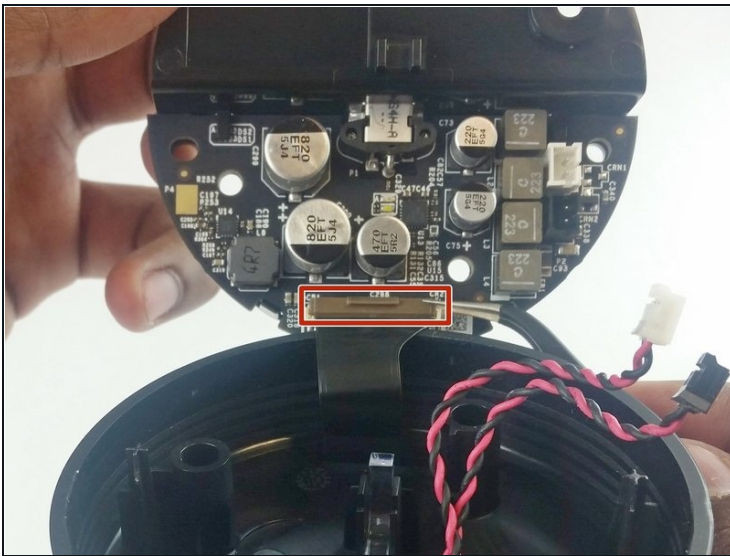
## Step 4



- Using [tweezers](#), carefully disconnect the two red and black cables from their sockets on the board.

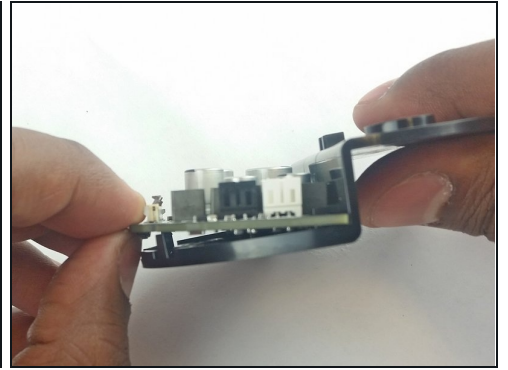
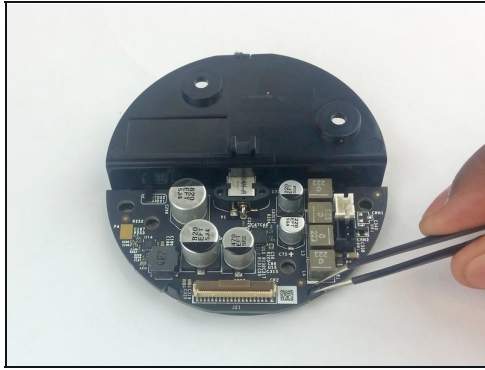
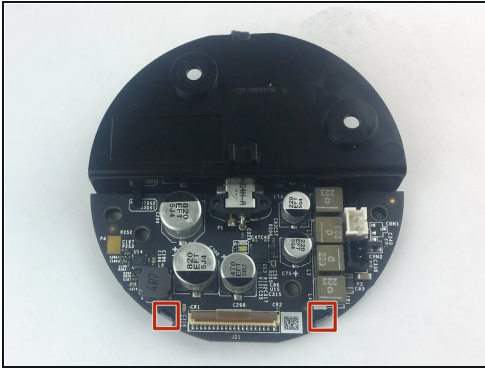
⚠ Tugging on the wires may damage the device. Pull from the plastic connectors instead.

## Step 5



- Lift the brown plastic latch on the ZIF connector securing the driver board ribbon cable.
- Pull the ribbon cable from its connector. The plate and board should now be free from the Echo.

## Step 6



- Using the spudger, pull back the two plastic clips on the plate.
- Lift the board up and pull it away from the plate.

---

To reassemble your device, follow these instructions in reverse order.