



Samsung Eternity Input Jack Replacement

You will need to find a clean area to work in...

Written By: Sven



INTRODUCTION

You will need to find a clean area to work in and have the necessary tools. Follow this guide to gain access to your cellphone's input jack module.

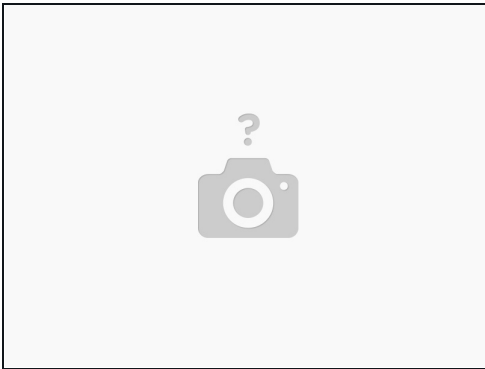
TOOLS:

[Phillips #00 Screwdriver](#) (1)

[Spudger](#) (1)

[Tweezers](#) (1)

Step 1 — Back Case



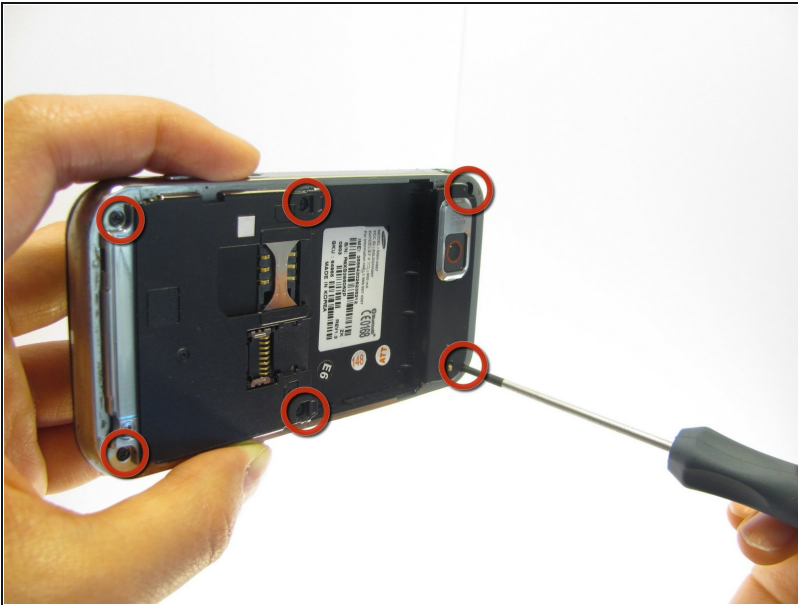
- Remove the back battery cover.

Step 2



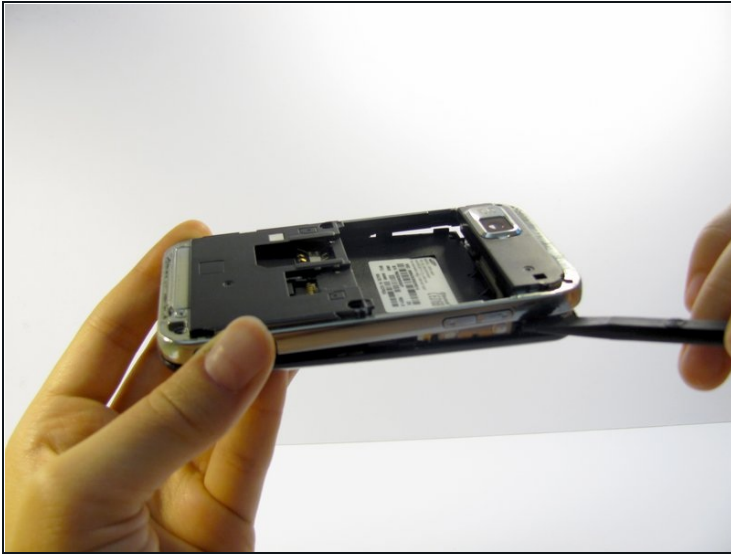
- Using the Phillips #00 screwdriver, remove the phone's battery.

Step 3



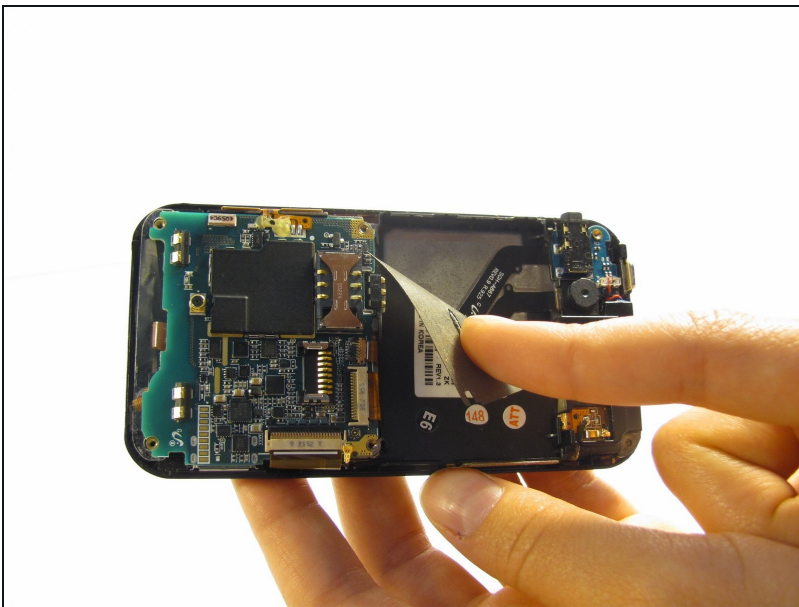
- Remove six (4.28 x 1.25)mm screws using the Phillips #00 screwdriver

Step 4



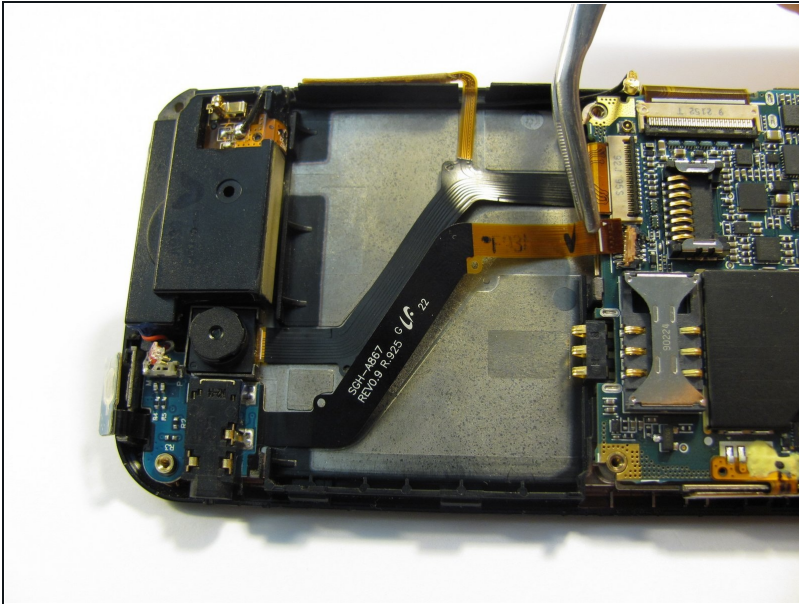
- Continuing to use the Phillips #00 screwdriver, gently pry the silver plastic back plate from the body of the phone.

Step 5 — Input Jack



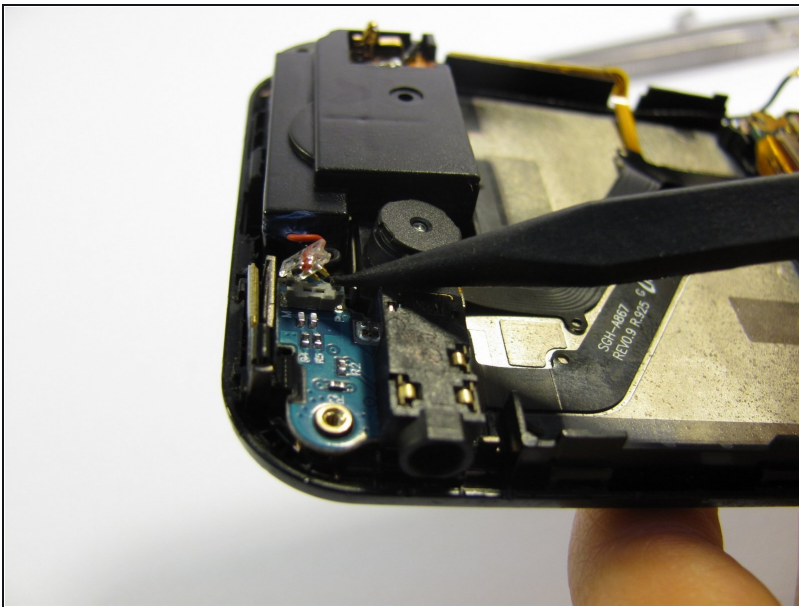
- Peel off the Identification sticker

Step 6



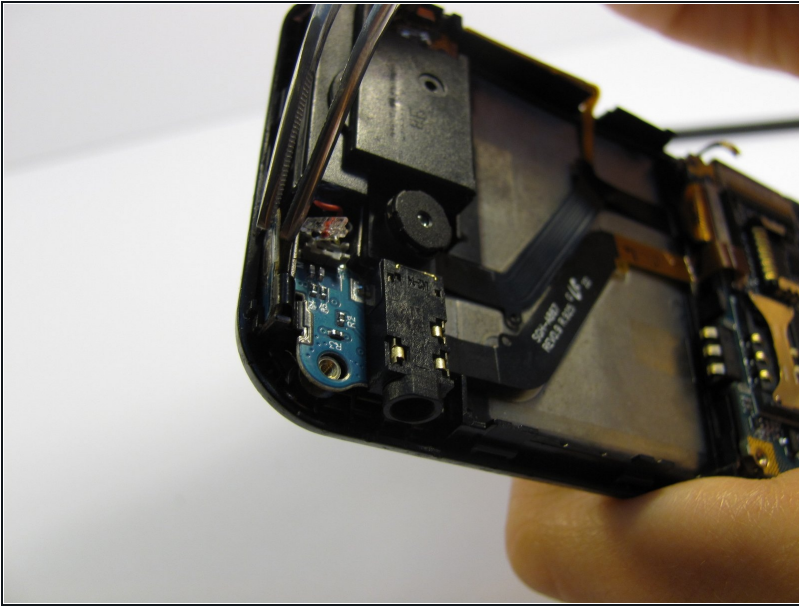
- Pop the red hinged-release lever away from its ribbon, then slide the ribbon out.

Step 7



- Pop the speaker plug out of its socket.

Step 8



- Peel the button sensor off the top of the case.

Step 9



- Peel the Input jack assembly out of the case.

To reassemble your device, follow these instructions in reverse order.