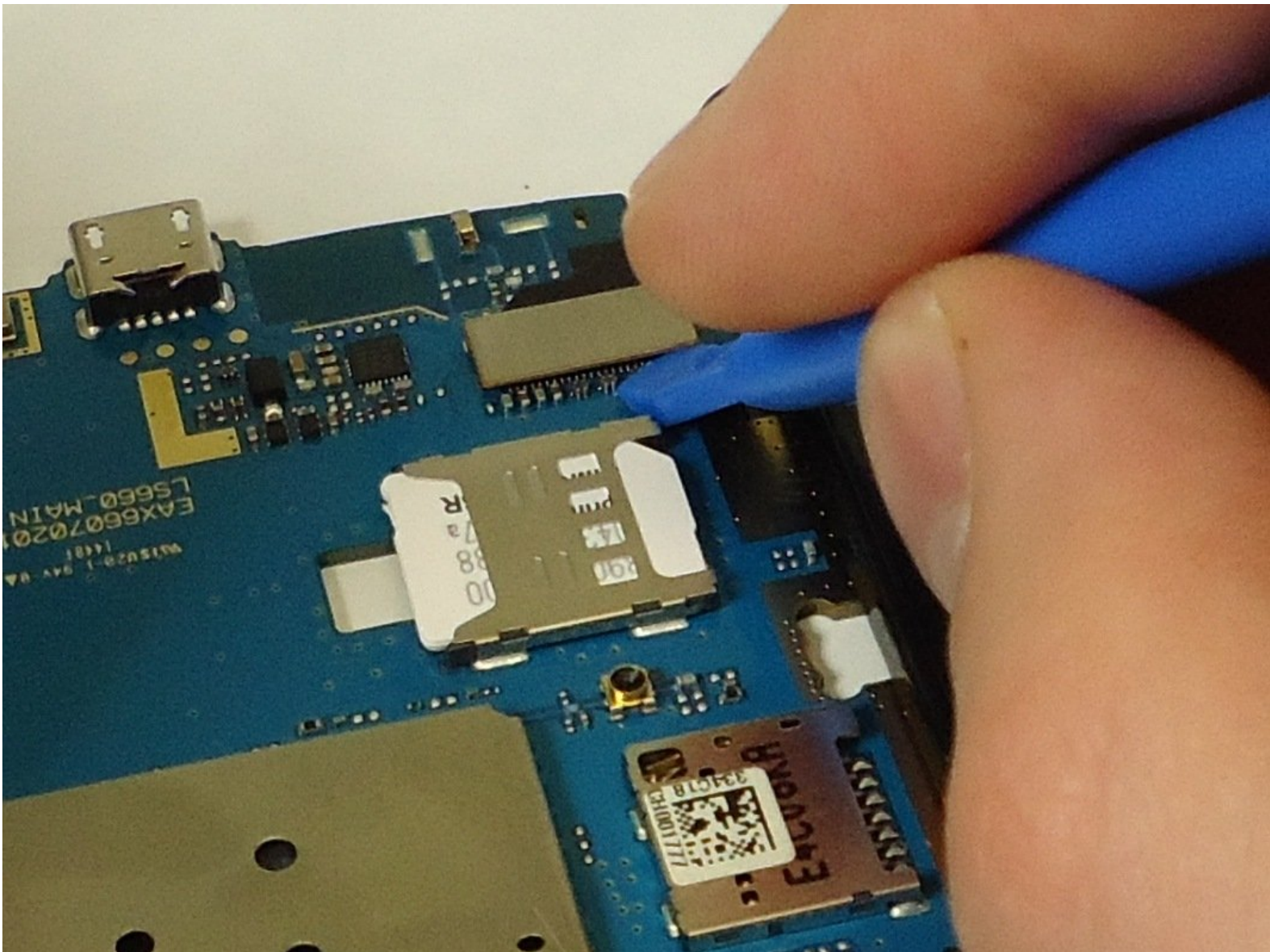




# LG Tribute motherboard Removal

prerequisite only guide

Written By: Aaron Amdall





## TOOLS:

- [iFixit Opening Tools](#) (1)
- [Phillips #000 Screwdriver](#) (1)
- [iFixit Opening Picks set of 6](#) (1)



## PARTS:

- [LG Tribute Battery](#) (1)  
Battery

## Step 1 — Battery



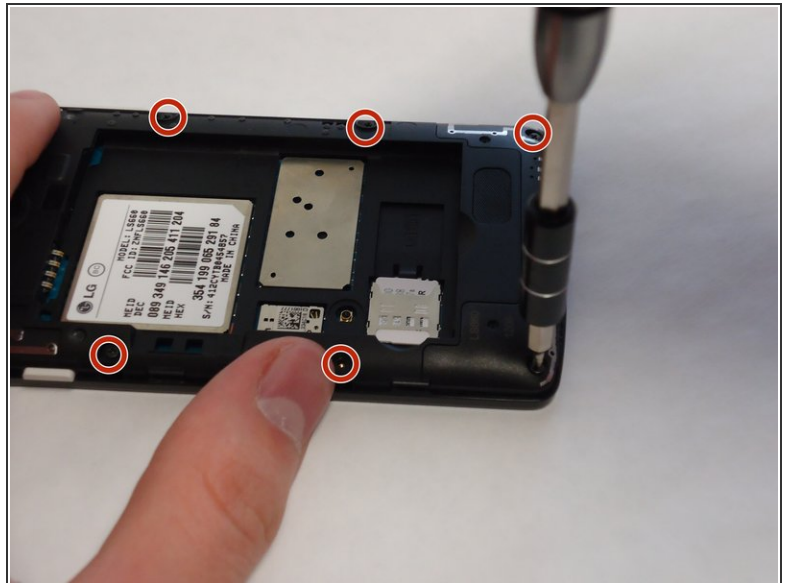
- Use the plastic opening tool to pry off the back cover.

## Step 2



- Lift the battery out of place.
- ★ When replacing the battery, the (+) and (-) symbols must match up with the phone's charging nodes.

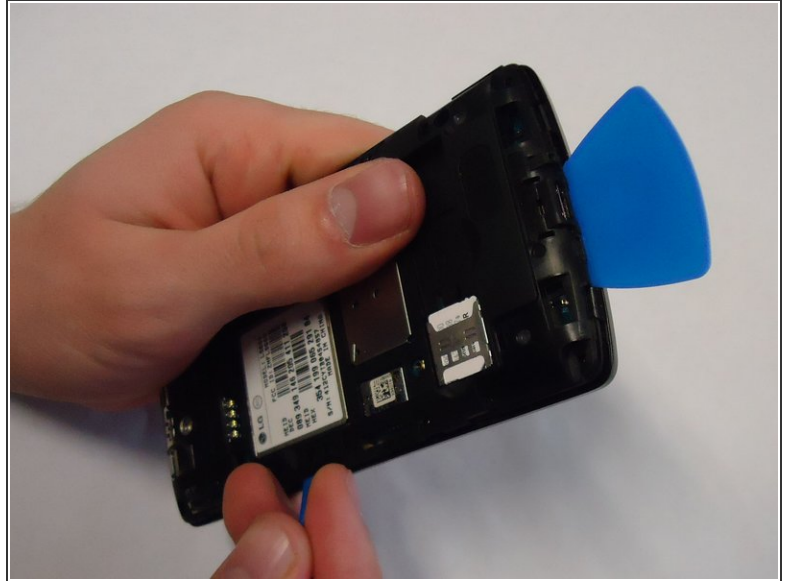
## Step 3 — Mid-panel



- Remove eight 4mm screws using a Phillips head 000 screwdriver (PH000).

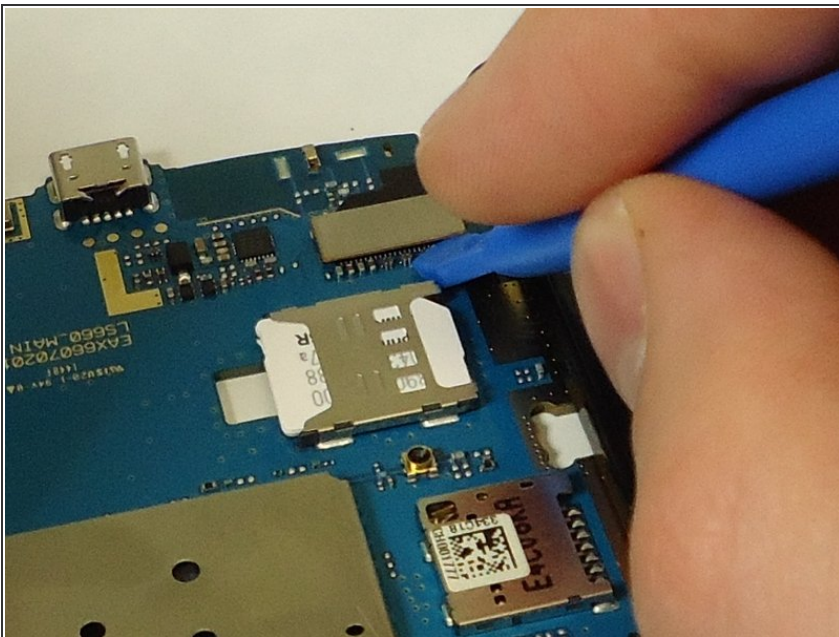


## Step 4



- Use a plastic opening tool to loosen the tabs around the edge of the phone.
- ⓘ Inserting a thin piece of plastic will help prevent opened tabs from locking back into place.
- ⚠ This step can be frustrating, but requires patience. Avoid the temptation to pry the panel loose. Using excessive force may break the delicate tabs.

## Step 5 — Motherboard



- Use a plastic opening tool to disconnect the touchscreen from the motherboard.
- ⓘ The motherboard will be completely free from the front panel after this step.

To reassemble your device, follow these instructions in reverse order.