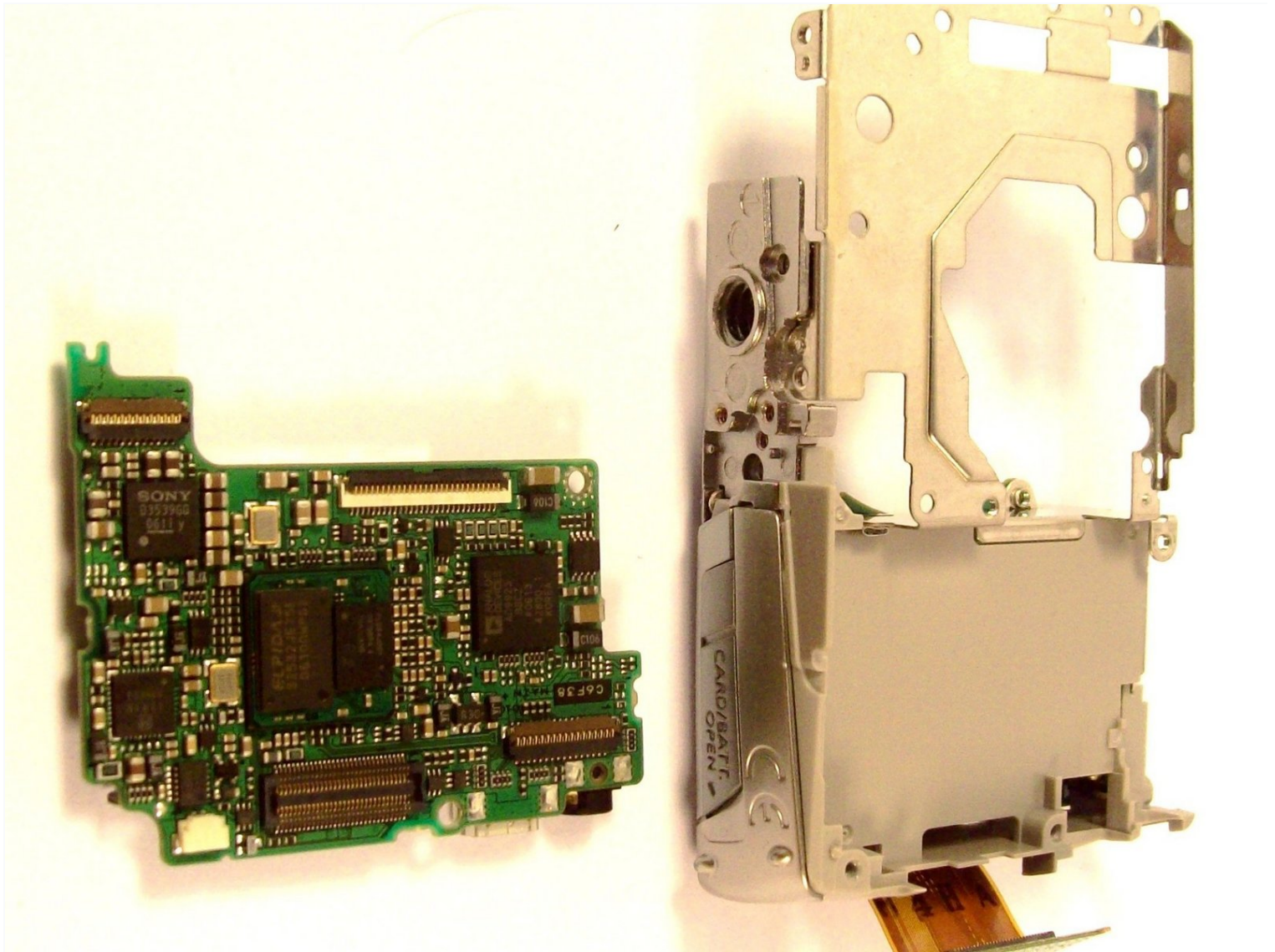




Canon PowerShot SD700 Motherboard Replacement

Follow this step by step installation guide for...

Written By: Kenneth Lim



INTRODUCTION

Follow this step by step installation guide for replacing the motherboard on your Canon Powershot SD700 IS camera.

In order to make the process easier please view our more indepth guide on taking off the camera's casing in the LCD replacement guide.

TOOLS:

Phillips #00 Screwdriver (1)

Step 1 — Outside Case



- Turn off the camera by pressing the power button above the LCD screen.

Step 2



- Remove the two, small screws on the bottom of the camera using a Phillip's #00 screwdriver.

Step 3



- Use a Phillips #00 screwdriver to remove the two, small screws on the right side of the camera.

Step 4



- Use a Phillips #00 screwdriver to remove the screw on the left of the camera under the A/V out Digital label.

Step 5



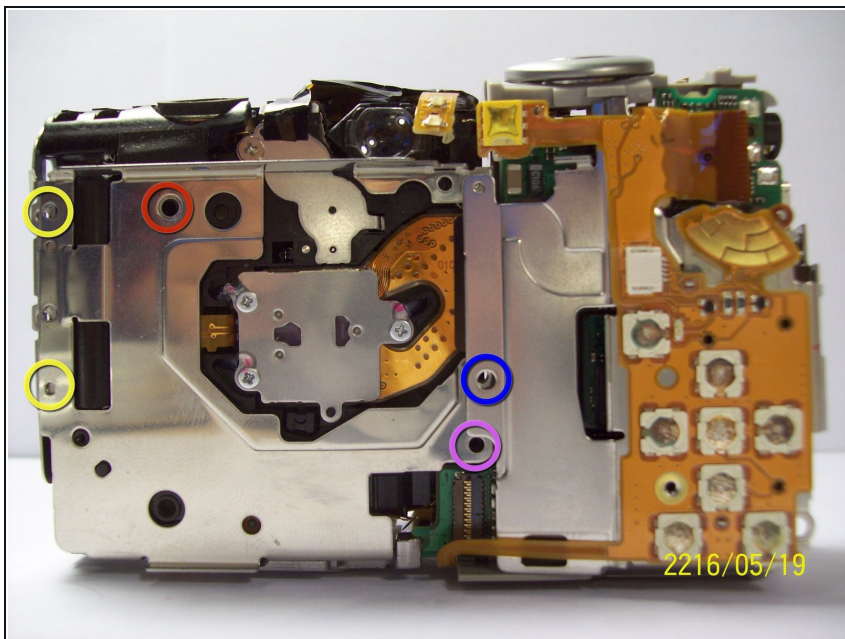
- Use a Phillips #00 screwdriver, remove the screw on the bottom of the camera near the battery and memory card slots.
- ⓘ This screw will be longer than the rest of the screws.

Step 6



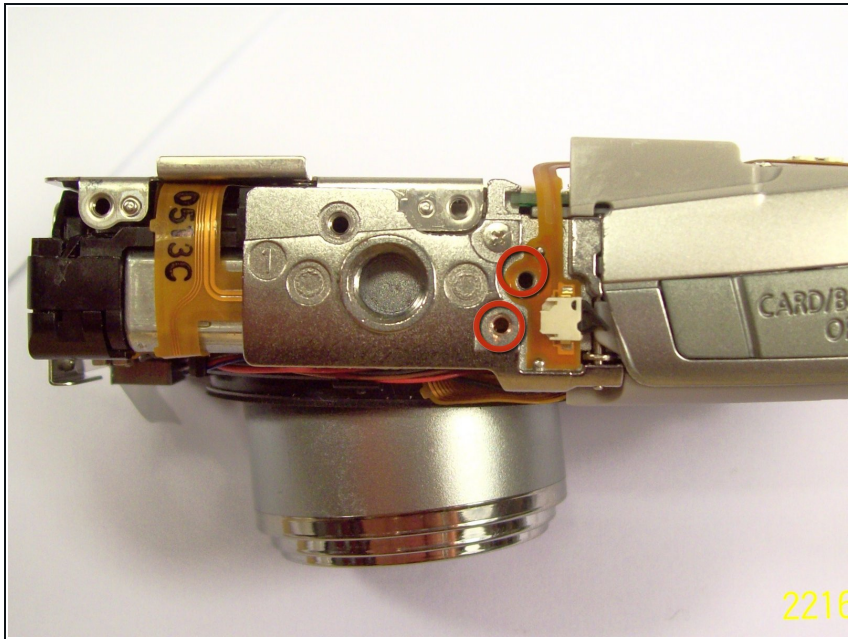
- Remove the front, back, and side casings from the camera and set to the side.

Step 7 — Motherboard



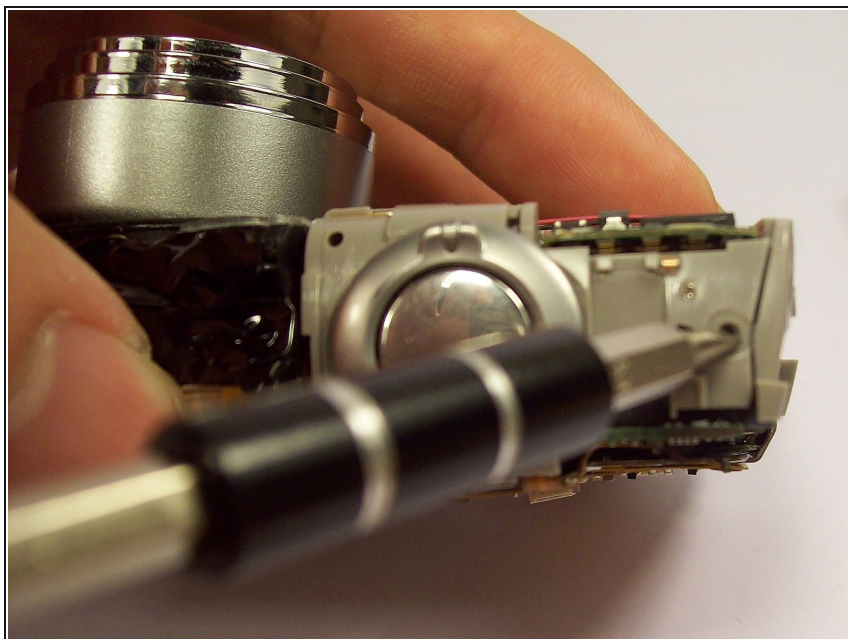
- Once the LCD and Backlight are detached, remove the larger screw marked in red in the picture as well as the four smaller sized screws marked in blue.

Step 8



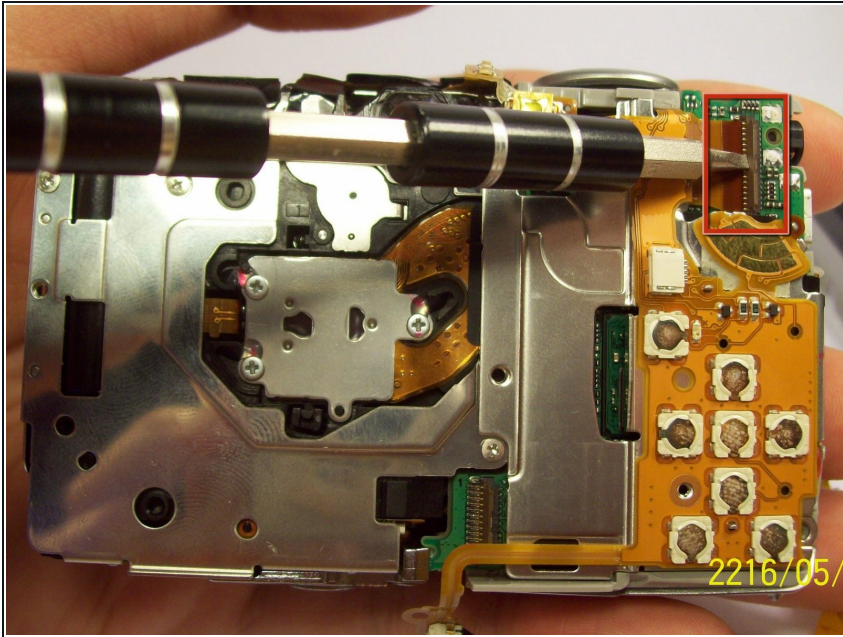
- Remove the two screws near the the tri-pod mount with a Philips head screw driver.

Step 9



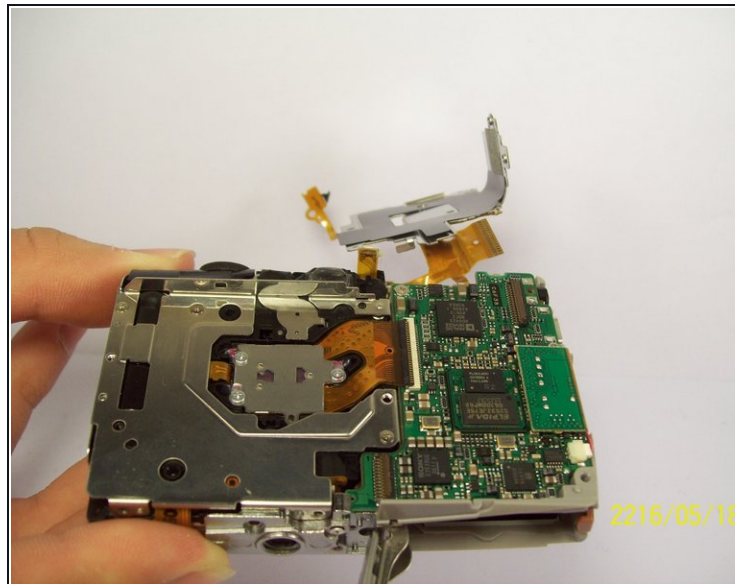
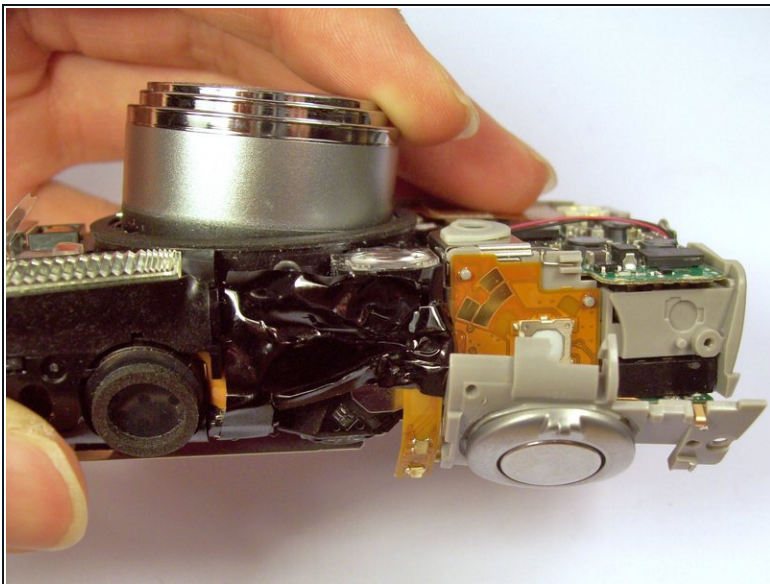
- Remove the screw next to the shutter with a Philip's head screw driver.

Step 10



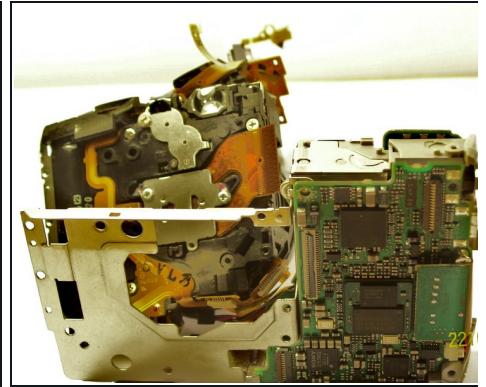
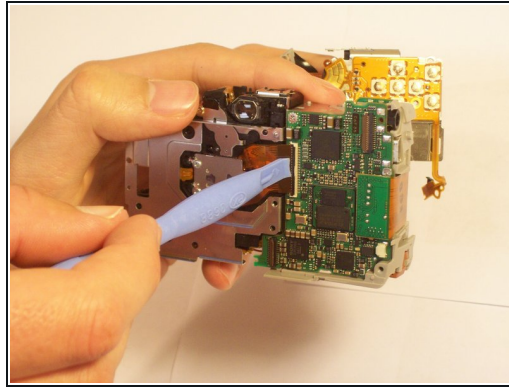
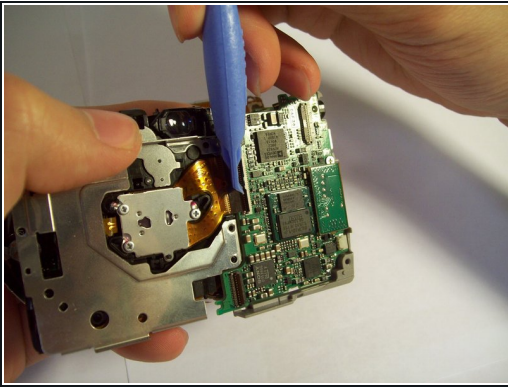
- Remove the orange ribbon cable by lifting the ZIF connector attached to the ribbon with a flat head screw driver or spudger.

Step 11



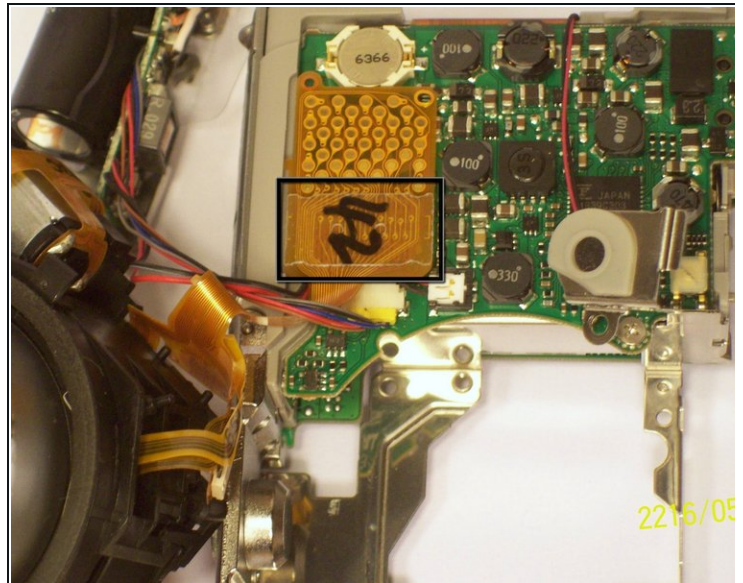
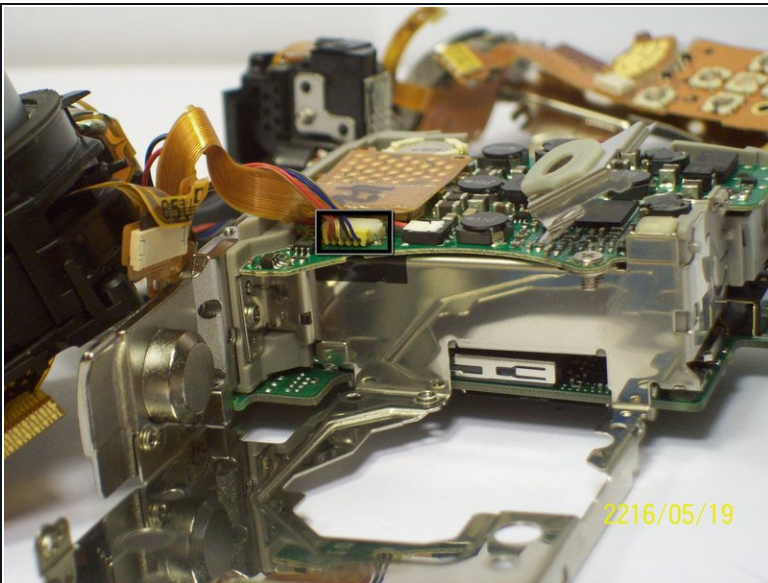
- Carefully lift the shutter along with the ribbon connected to it. This will remove the casing around the motherboard.

Step 12



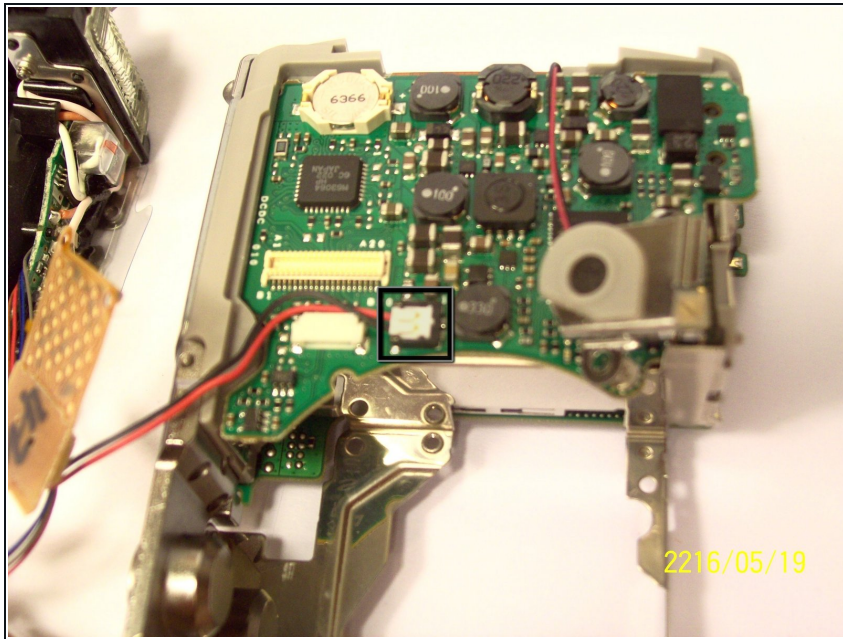
- With the motherboard casing detached, remove the short orange ribbon by lifting the ZIF connector with a spudger or other plastic opening tools and slide the ribbon out. Detaching this ribbon will disconnect the side of the camera containing the motherboard from the rest of the camera.

Step 13



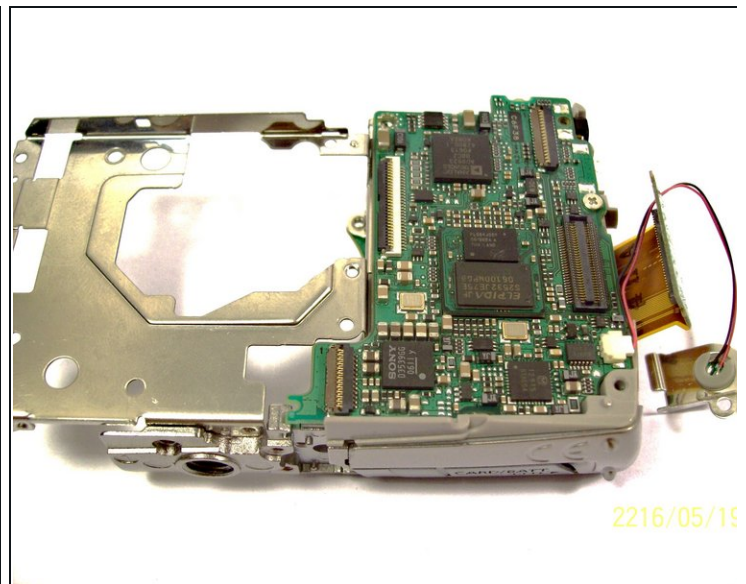
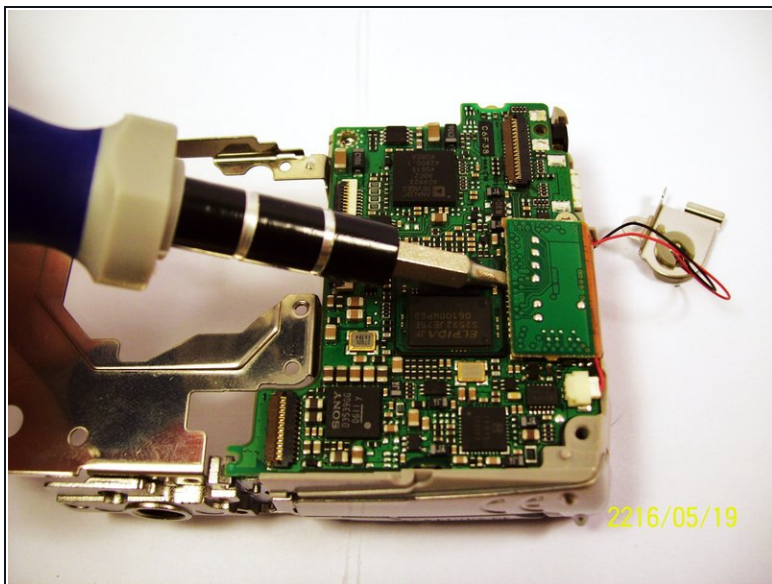
- First remove the wires that are attached to the motherboard, as shown by the black box. You can detach them by simply pulling them out.
- Next you can remove the film by lifting it gently from the motherboard.

Step 14



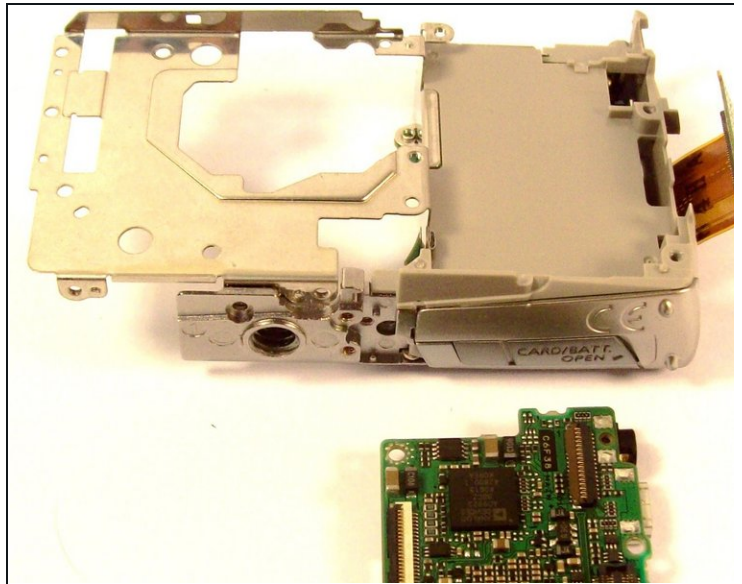
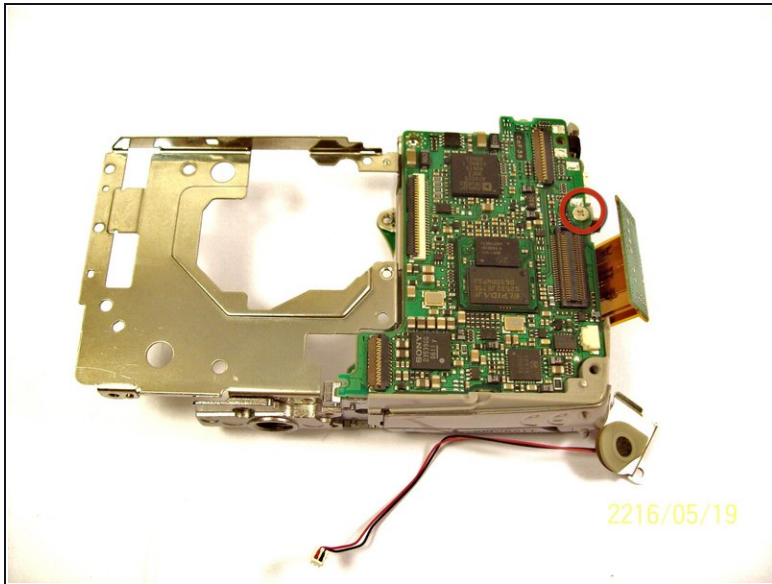
- Remove the last wires connected to the motherboard. You can remove it by gently lifting it upwards.

Step 15



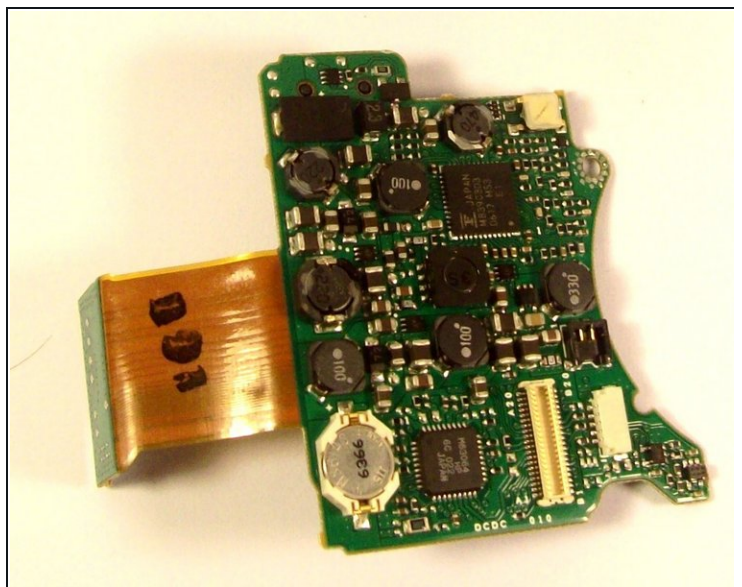
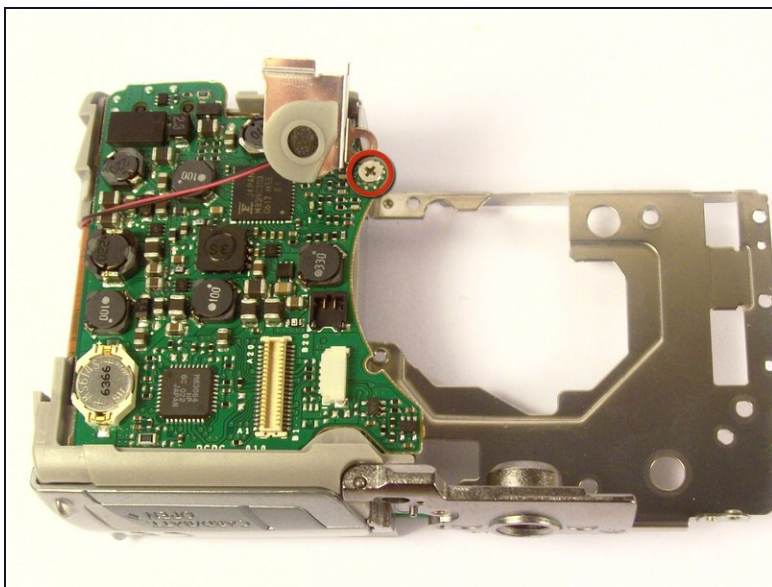
- Place a flathead screwdriver and gently lift the circuit attached, as shown on the picture.

Step 16



- Remove the screw using a philip 00 screwdriver.
- Once the screw is removed, gently lift the motherboard away from the case.

Step 17



- Remove the screw as shown by the red circle.
- Once the screw is removed, you can remove the board.

To reassemble your device, follow these instructions in reverse order.