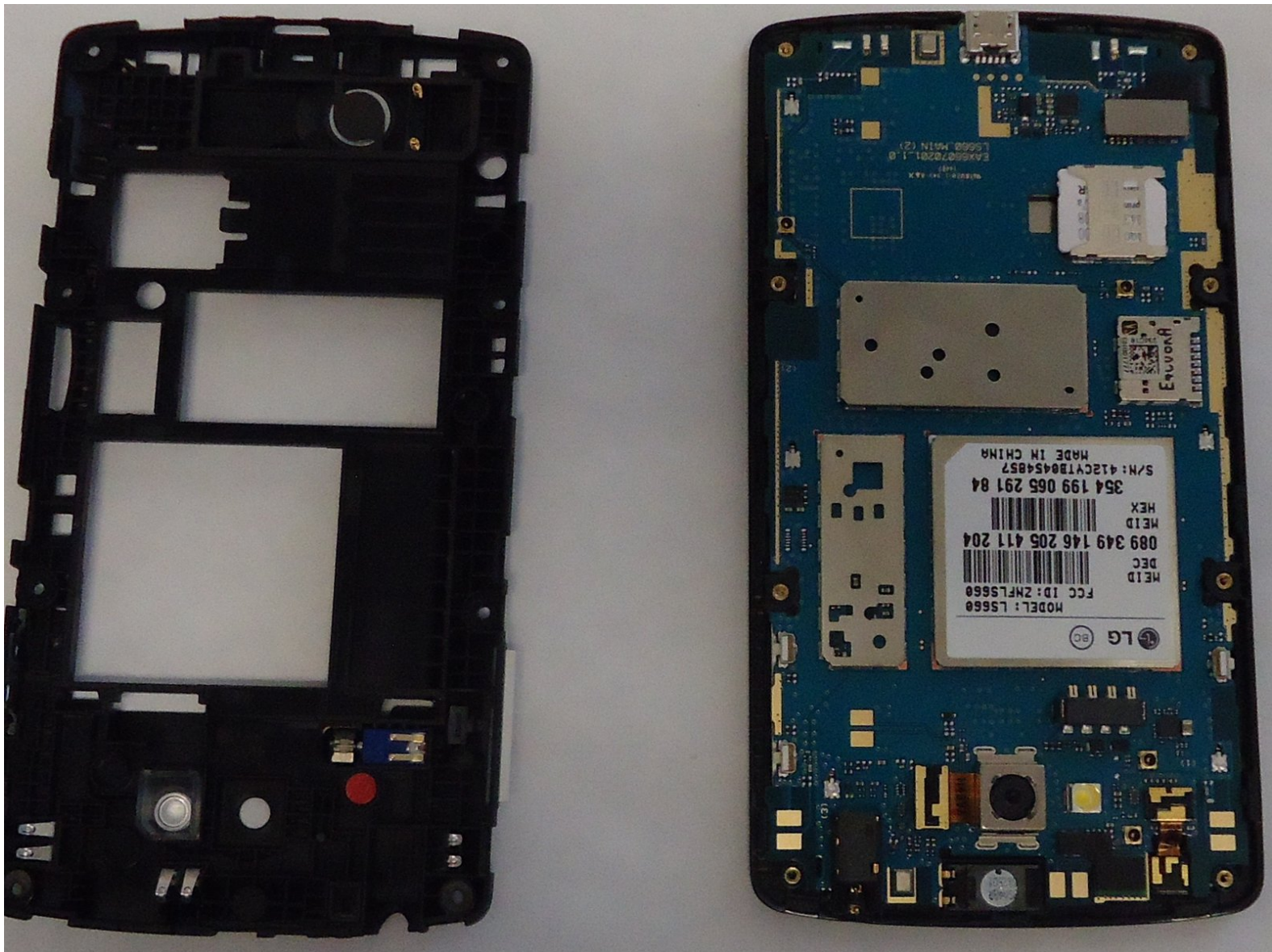




LG Tribute Motherboard Replacement

This guide shows how to replace the motherboard on the LG Tribute.

Written By: Aaron Amdall



INTRODUCTION

The motherboard is a circuit board that connects and controls the phone's components.



TOOLS:

- [iFixit Opening Tools](#) (1)
 - [Phillips #000 Screwdriver](#) (1)
 - [iFixit Opening Picks set of 6](#) (1)
-

Step 1 — Battery



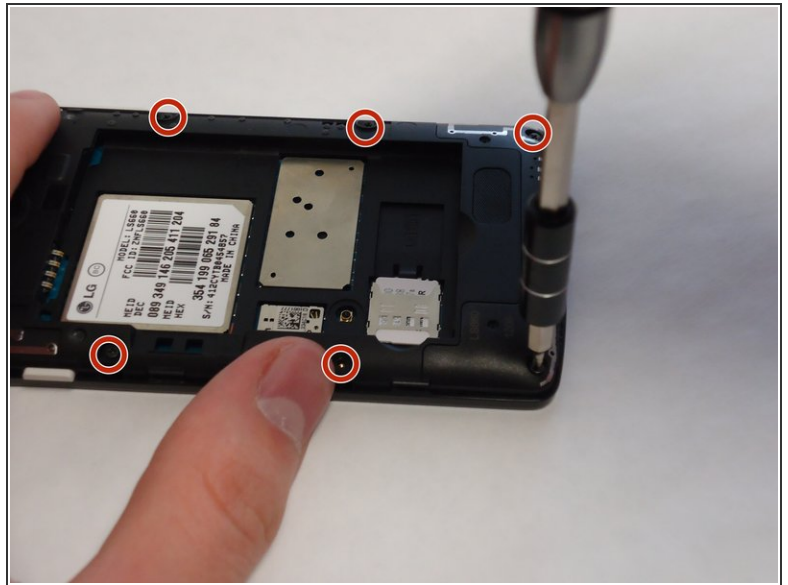
- Use the plastic opening tool to pry off the back cover.

Step 2



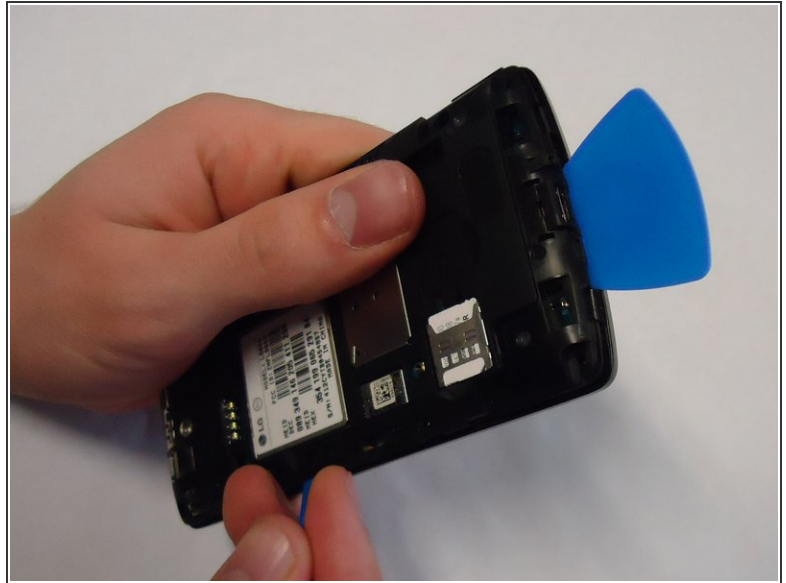
- Lift the battery out of place.
- ★ When replacing the battery, the (+) and (-) symbols must match up with the phone's charging nodes.

Step 3 — Mid-panel



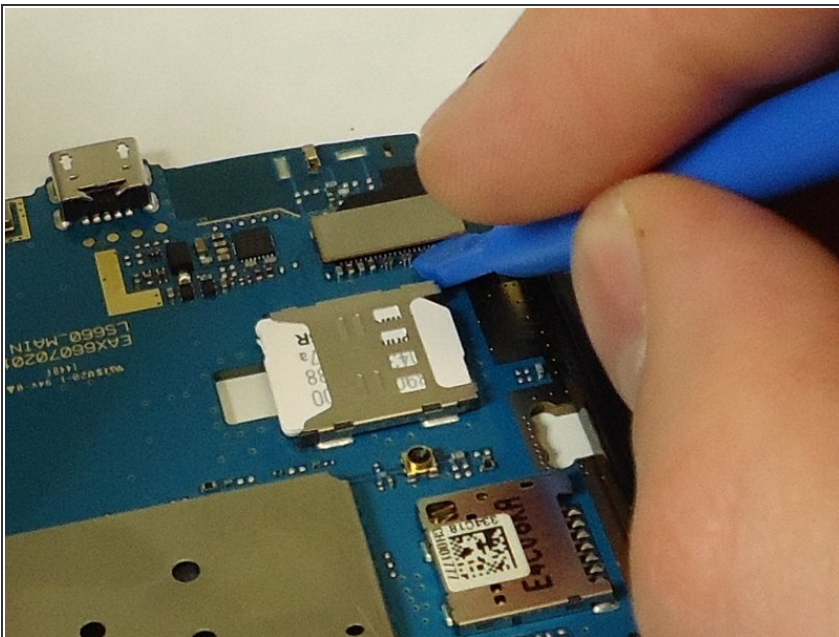
- Remove eight 4mm screws using a Phillips head 000 screwdriver (PH000).

Step 4



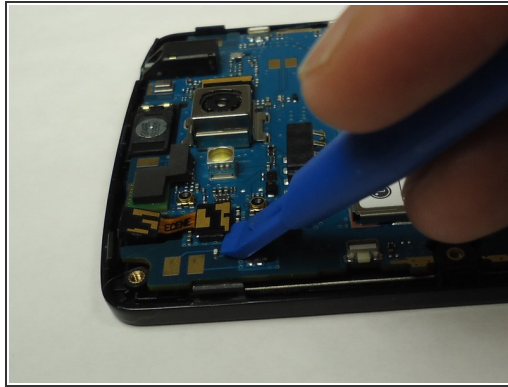
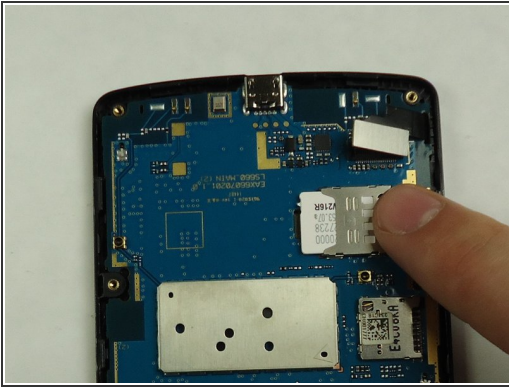
- Use a plastic opening tool to loosen the tabs around the edge of the phone.
- ❗ Inserting a thin piece of plastic will help prevent opened tabs from locking back into place.
- ⚠ This step can be frustrating, but requires patience. Avoid the temptation to pry the panel loose. Using excessive force may break the delicate tabs.

Step 5 — Motherboard



- Use a plastic opening tool to disconnect the touchscreen from the motherboard.
- ❗ The motherboard will be completely free from the front panel after this step.

Step 6 — Motherboard



- Remove SIM card by sliding it out of its housing.
- Remove the front-facing camera using a plastic opening tool.
- Remove rear-facing camera using a plastic opening tool.
- Connect these three components to the new motherboard.

To reassemble your device, follow these instructions in reverse order.