



Nokia 2630b Antenna Replacement

This guide shows how to remove and replace the...

Written By: Eric



INTRODUCTION

This guide shows how to remove and replace the antenna of the Nokia 2630b after full disassembly of the phone.

TOOLS:

- [T5 Torx Screwdriver](#) (1)
 - [iFixit Opening Tool](#) (1)
-

Step 1 — Battery Case



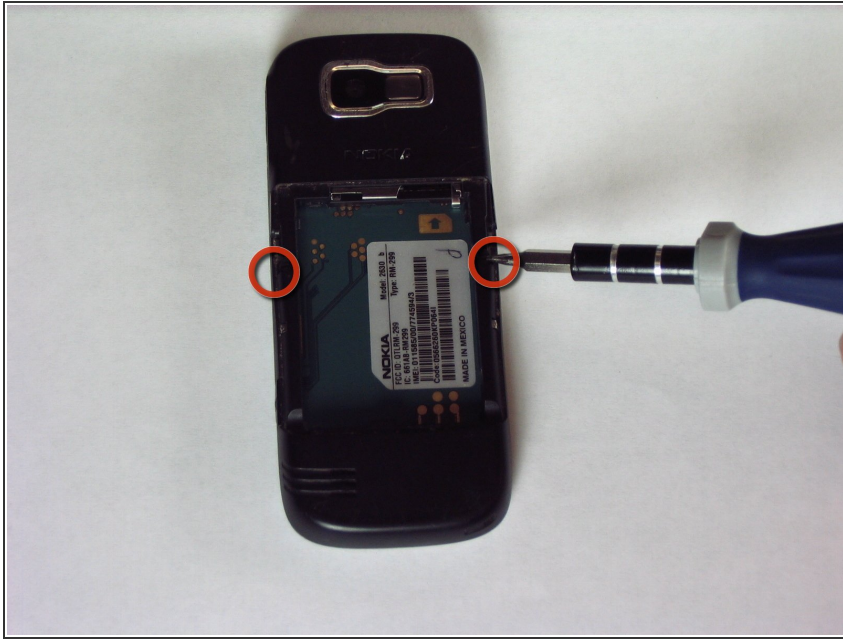
- Press each release button on either side of the battery cover and simultaneously remove the battery cover from the phone.

Step 2



- Pull the battery out of the phone with your fingers.

Step 3 — Screen / Front Case



- Remove the two screws on either side of the battery case using the micro screwdriver using the T5 bit
- ⓘ The T5 bit has a star shaped end and has "T5" engraved on the side of the bit for easy identification
- NOTE: Keep the screws in a safe place while you continue working.

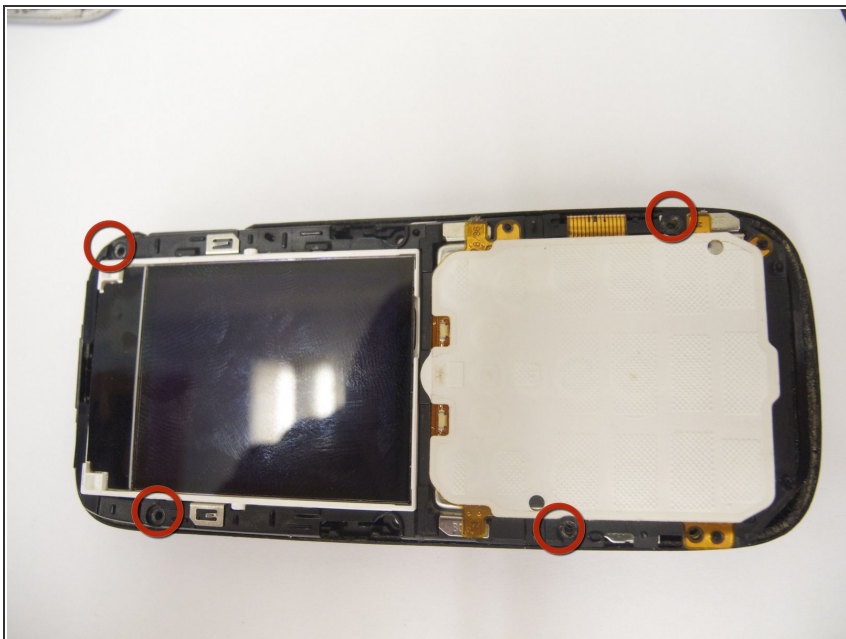
Step 4



⚠ Separate the front case from the back case using the iPod opener

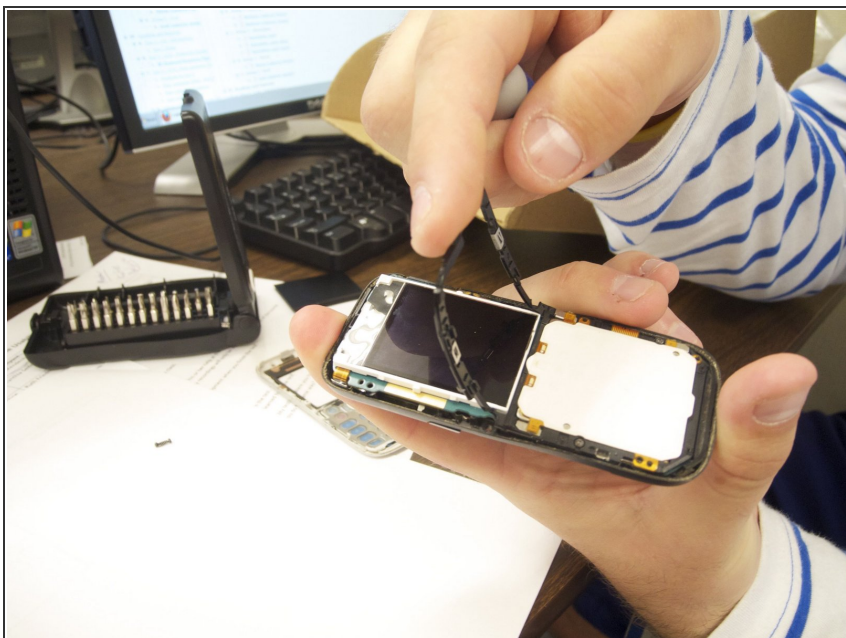
⚠ NOTE: The keypad is a loose piece and may fall out

Step 5



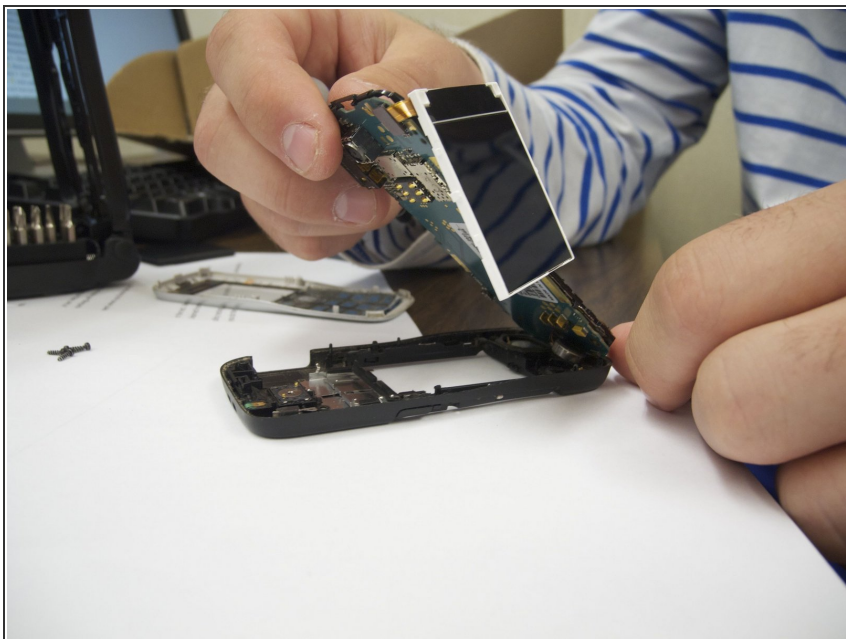
- Remove screws using the same T5 screw bit to release the computer chip from the case
- NOTE: Keep the screws in a safe place while you continue working

Step 6



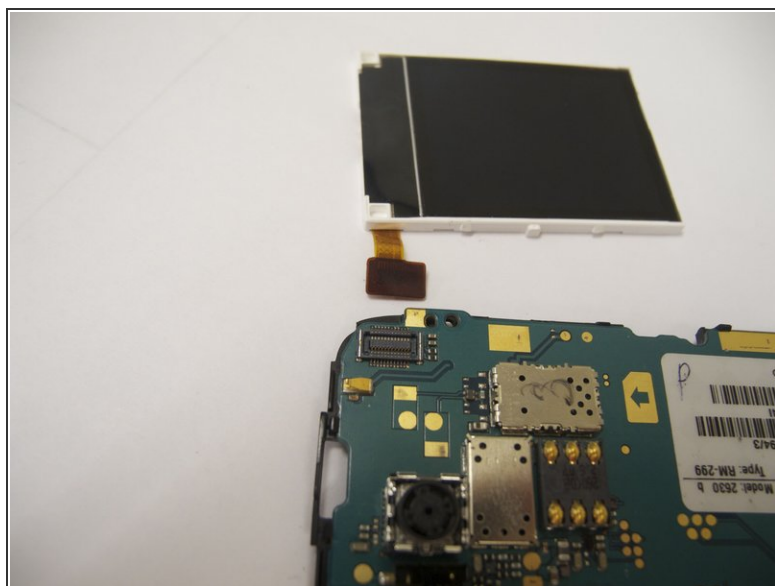
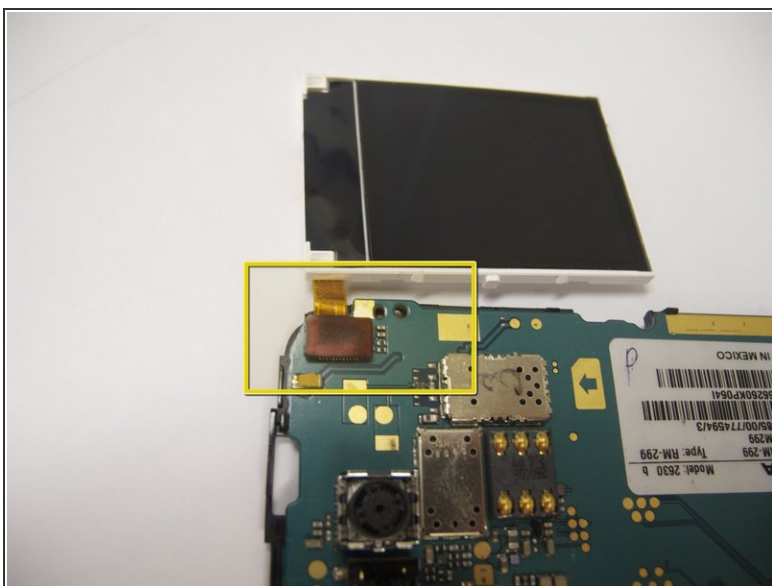
- Carefully lift the black frame off the screen with your fingers

Step 7



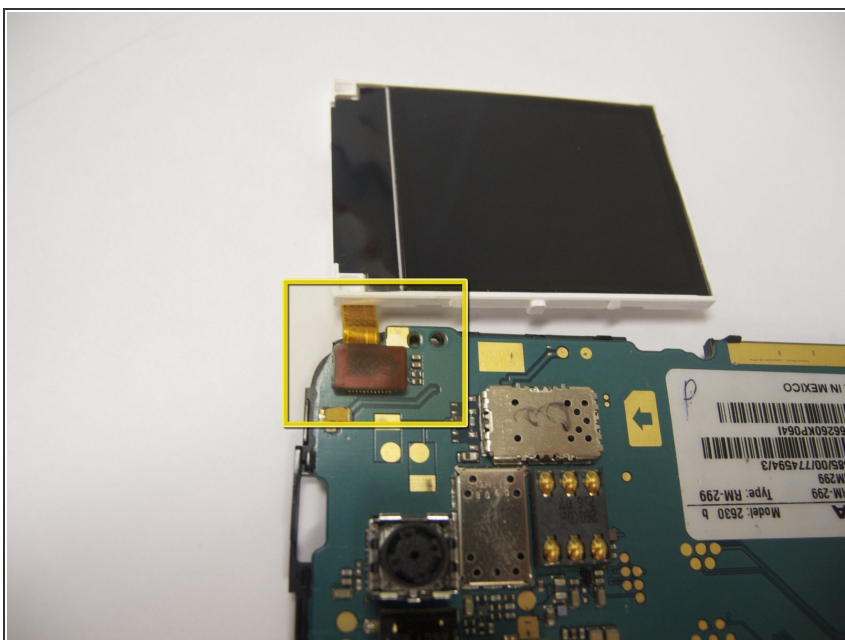
- Carefully remove the computer chip and screen out of the black case with your fingers

Step 8



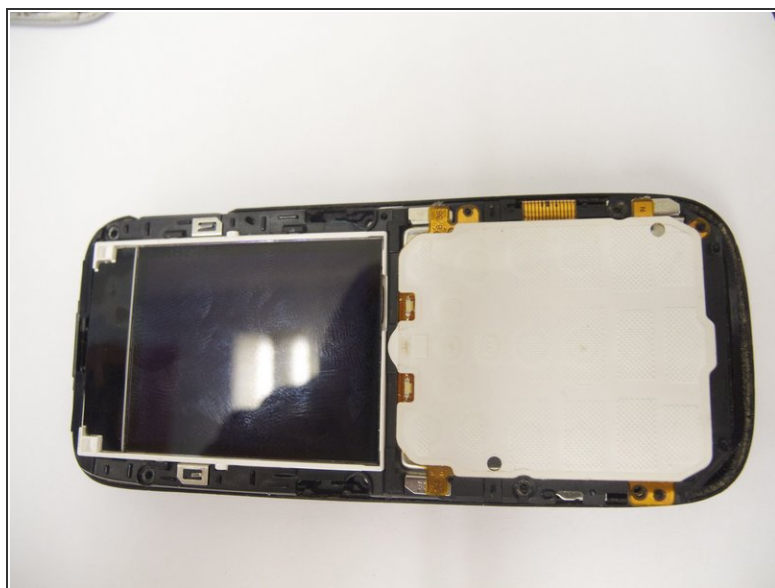
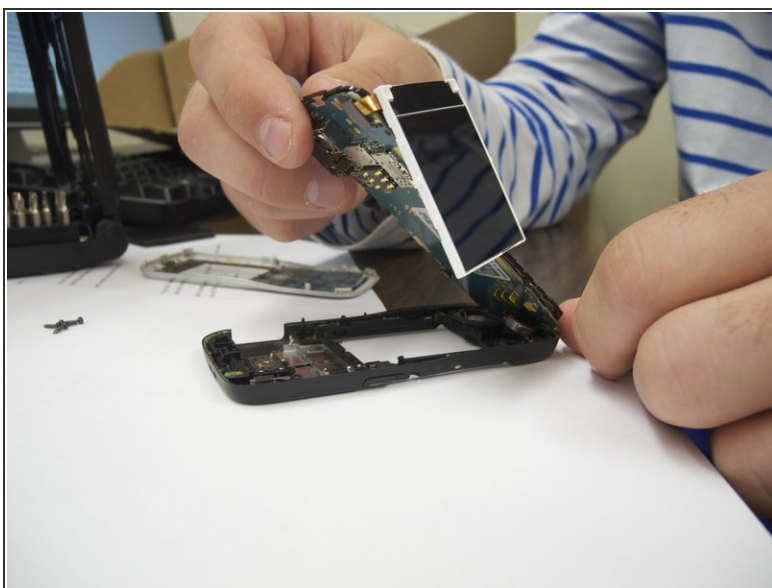
- The screen is attached to the motherboard by an orange ribbon
- Carefully detach the ribbon from the motherboard using your fingers

Step 9



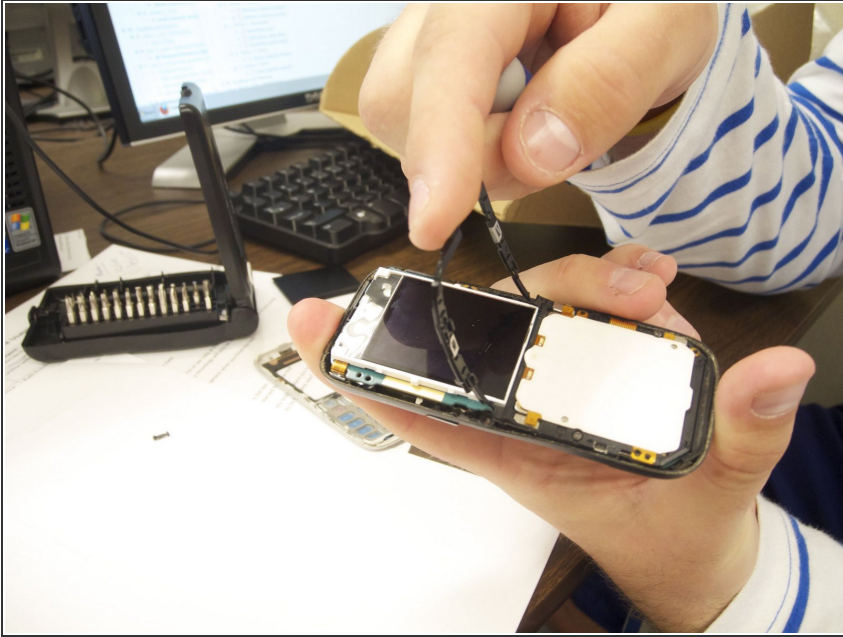
- Reattach new screen by connecting the orange ribbon to the computer chip

Step 10



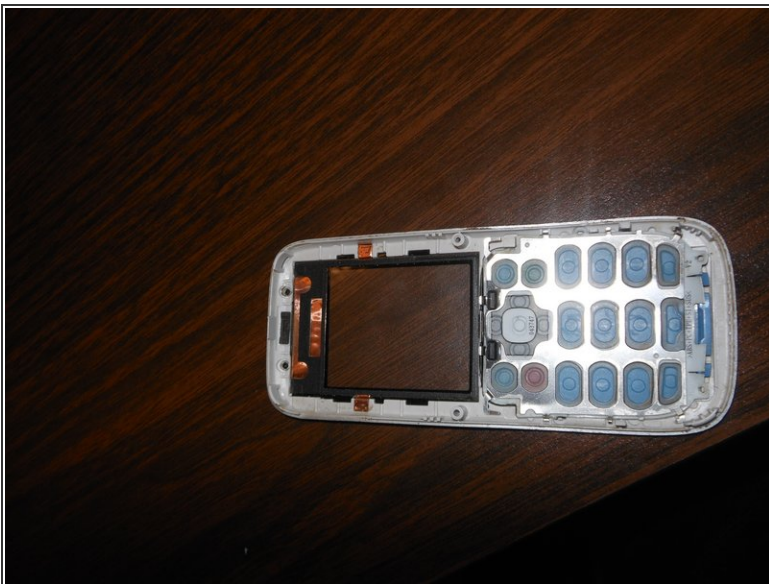
- Place computer chip and screen back into black case

Step 11



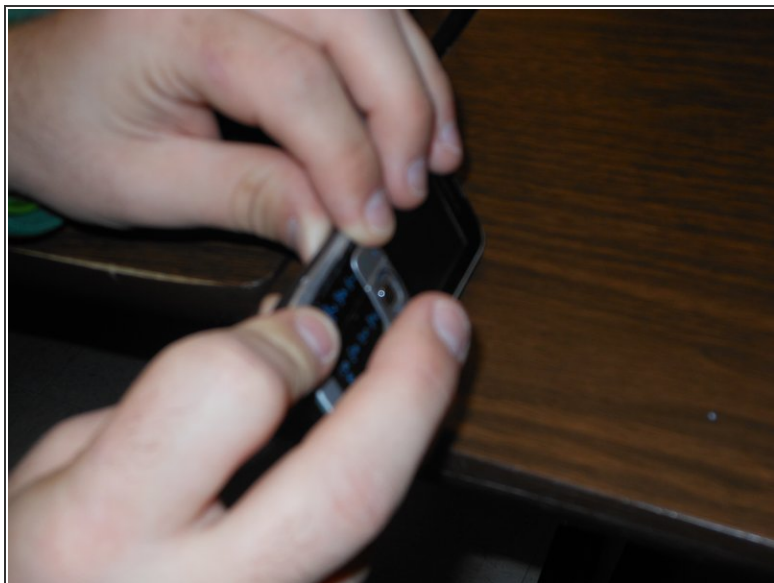
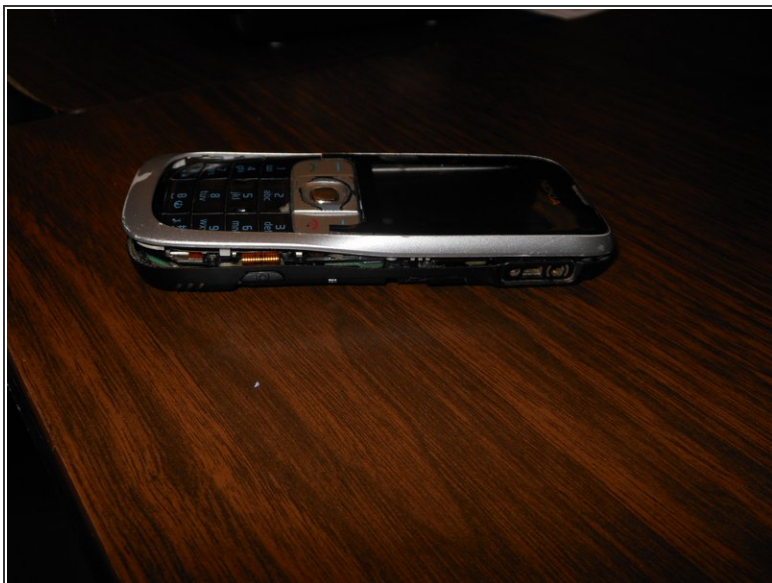
- Place black frame back over screen

Step 12



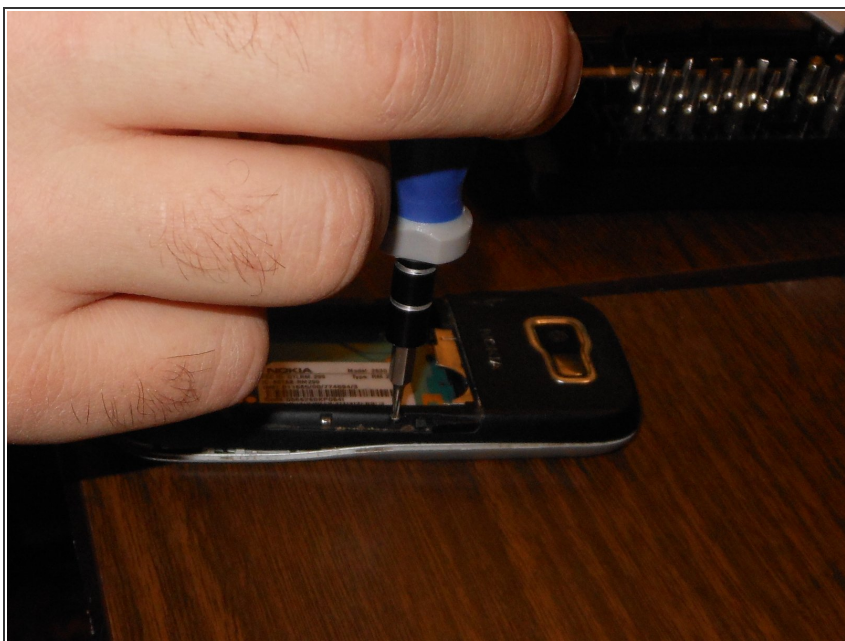
- Carefully place keypad back in place

Step 13



- Snap the front case back in place with the bottom case with your fingers

Step 14



- Reassemble screws with micro-screwdriver

Step 15



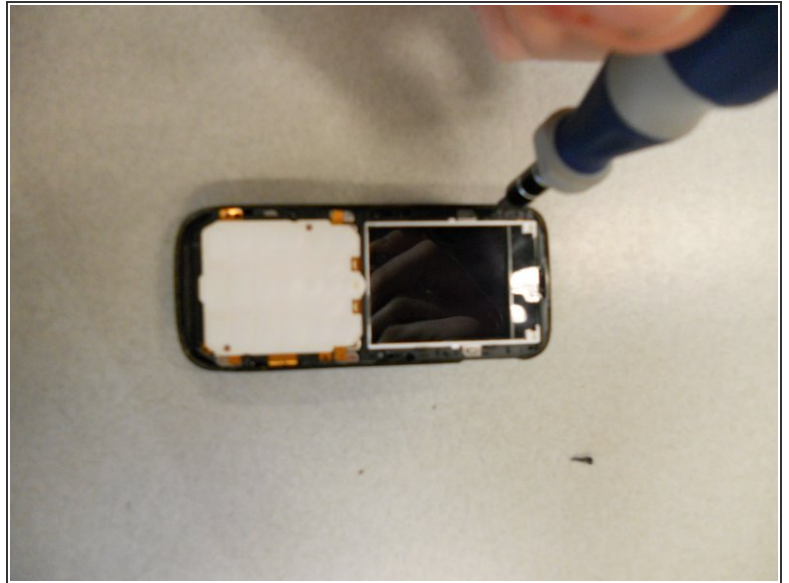
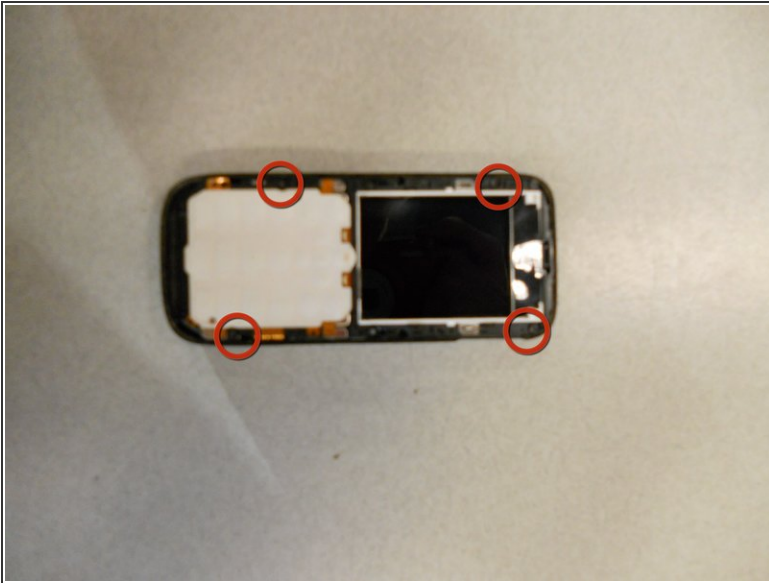
- Slide battery back into place

Step 16



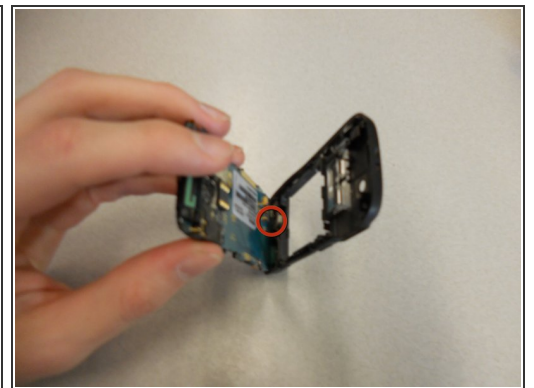
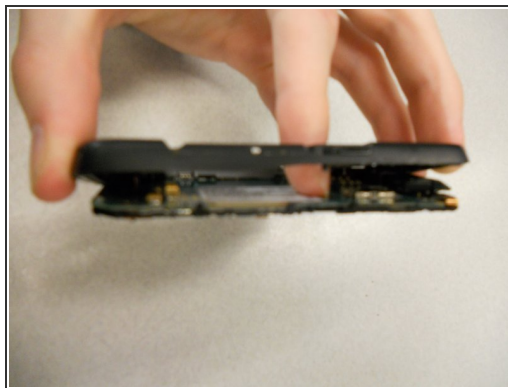
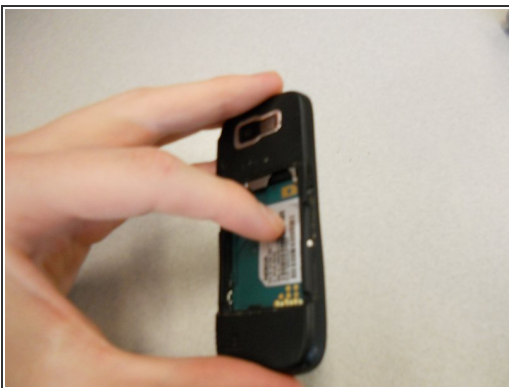
- Snap battery cover back into place

Step 17 — Back Case



- Locate the four screws that secure the back case to the rest of the phone.
- Unscrew all four screws using a "T-5" star shaped screw driver, turning counter-clockwise.

Step 18



⚠ DO NOT PULL APART! There is a wire attaching the speaker to the rear case. It is very important to NOT sever this connection. Because of this, the rear case does not completely detach from the rest of the phone.

- Holding the rear case, applying pressure to the back of the phone near the location of the battery in order to separate the two components.

Step 19 — Antenna



- The antenna is the "L" shaped device located on the top of the phone in between the back case and the board.
- You should be able to remove the antenna with minimal effort.
- To put in a new antenna, place it in the same location as the old one. There is no need to connect to any hardware on the phone.

Step 20



- To reassemble the device, follow the instructions in reverse order.
- When reinstalling the keyboard, make sure it is in the correct position before screwing the case back together.
- When reinstalling the battery, make sure the contacts of the battery connect to the contacts on the phone.
 - The red square in the photo indicates the position of the brass contacts of the battery.
 - The photo displays the correct orientation of the battery.

