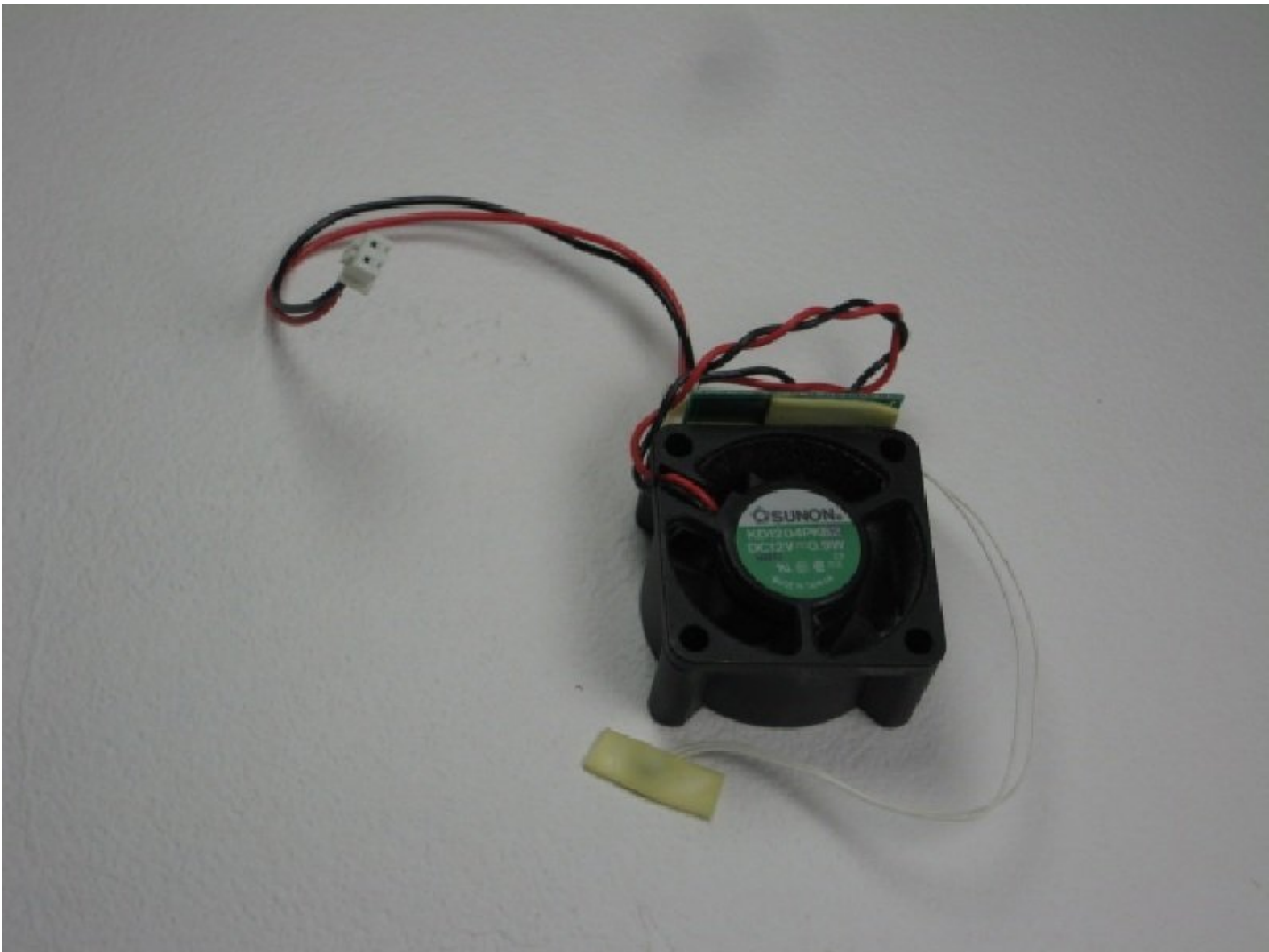




APS Tech 101629 Exhaust Fan Replacement

This guide will give directions on how to remove the case of the CD-Drive and replace a worn out fan.

Written By: Patrick Meyer



INTRODUCTION

This repair guide will walk you through the steps to removing and replacing the fan of your APS Tech 101629 CD-Drive. Fans are easily replaced and the process for removing this fan is fairly simple.

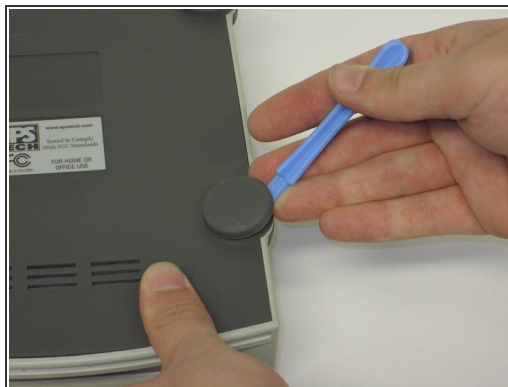
First the casing, channel switch, and power switch will need to be removed.



TOOLS:

- [Phillips #1 Screwdriver](#) (1)
 - [Spudger](#) (1)
 - [Tweezers](#) (1)
 - [iFixit Opening Tools](#) (1)
-

Step 1 — External Casing



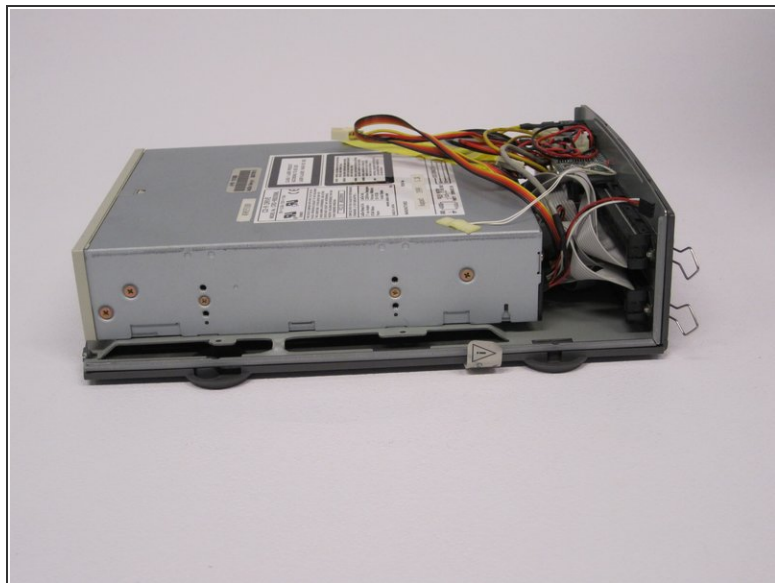
- Pry all four of the plastic feet off the bottom of the enclosure using the iPod opening tool.

Step 2



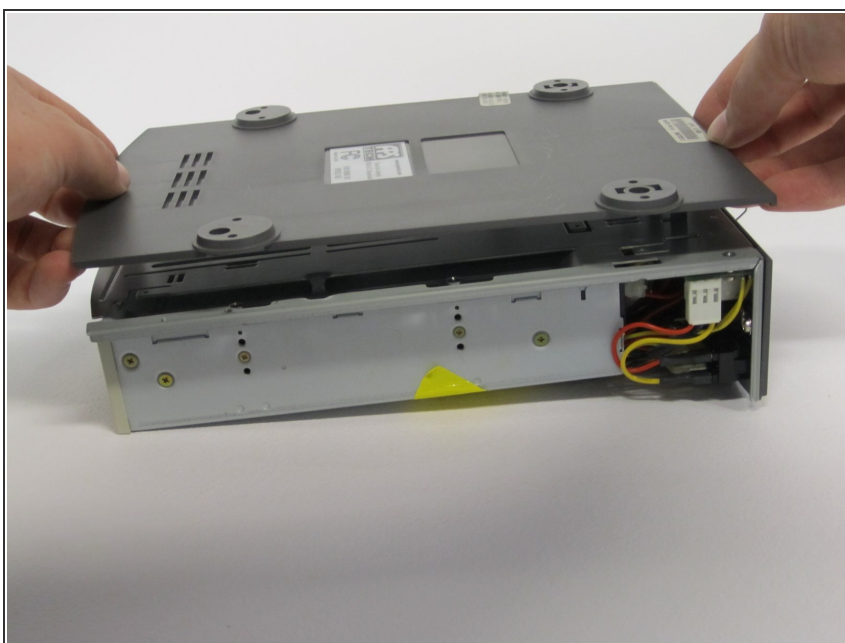
- Unscrew the four screws previously covered by the feet with a Phillips #1 screwdriver.

Step 3



- Flip the device right side up.
- Gently slide the casing upwards and off the hard drive.

Step 4



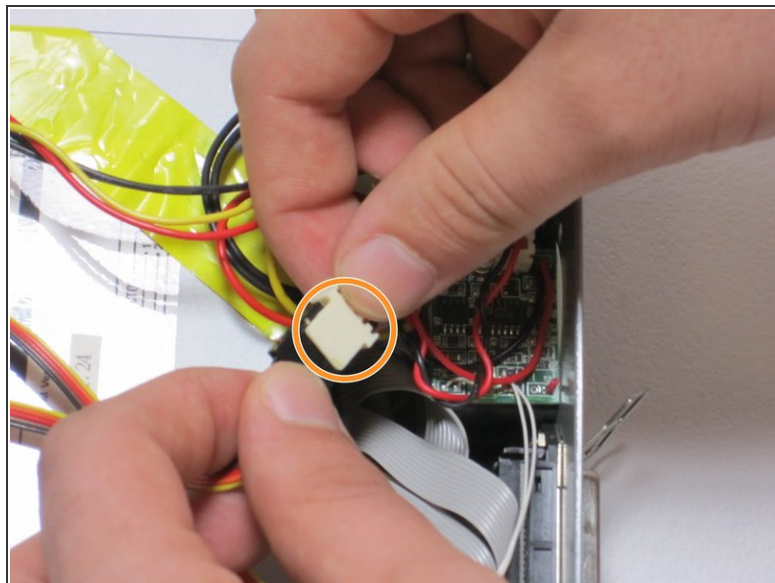
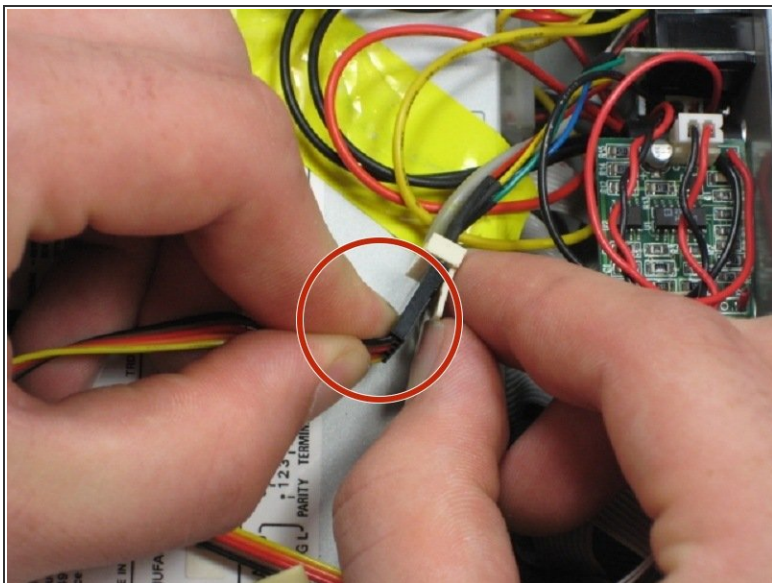
- Flip device upside down again.
- Gently pry the bottom gray casing away from the device.

Step 5



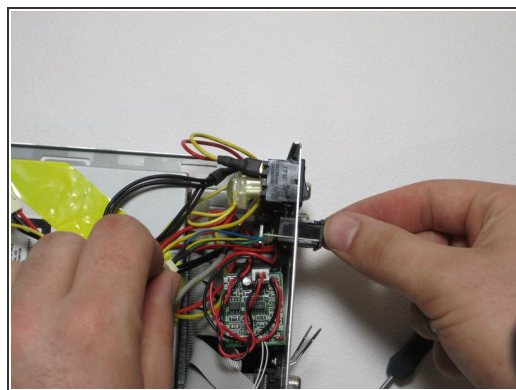
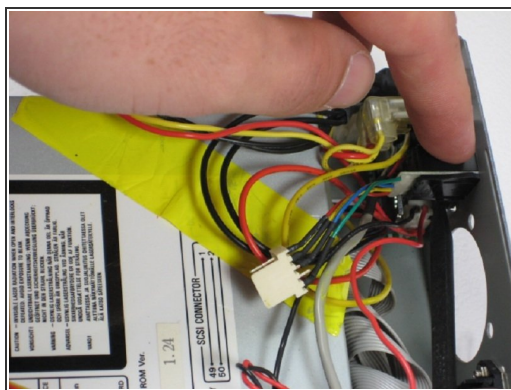
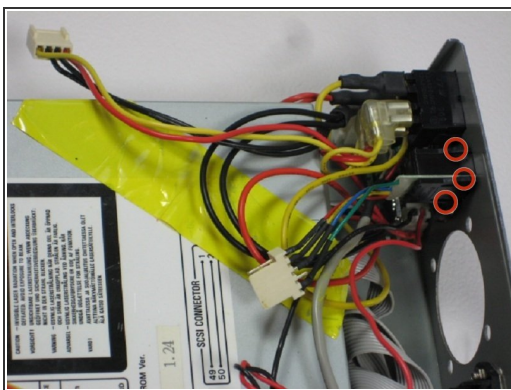
- Rotate so the back of the device is facing you.
- Gently pry the back casing away.
- When the back casing is removed, the fan will become loose.

Step 6 — Channel Switch



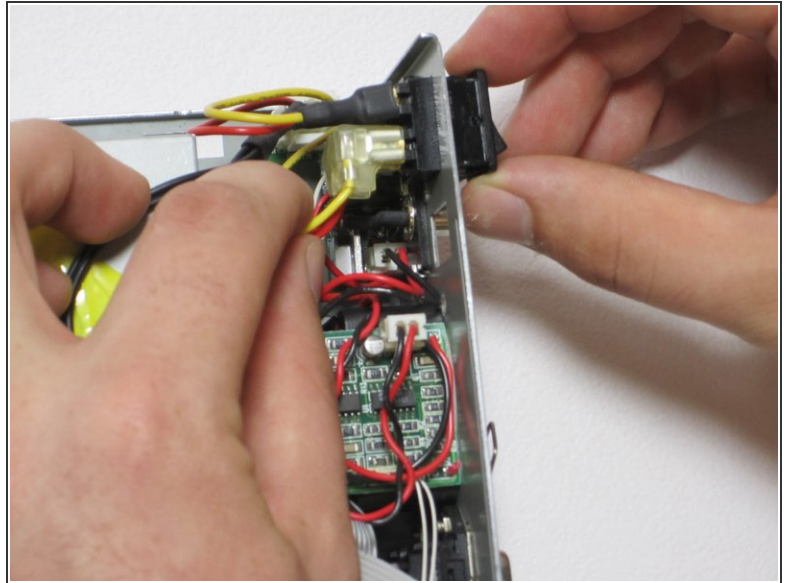
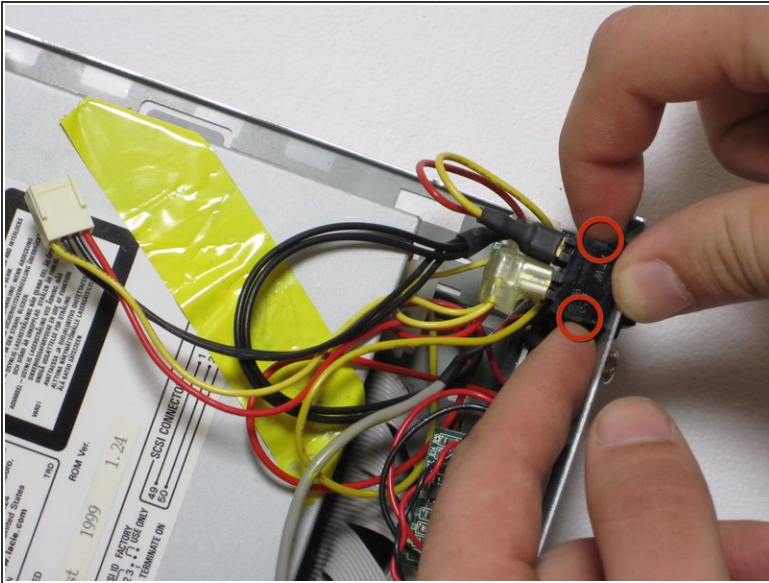
- Find the conjoined ID cable wires that are colored black, orange, and yellow.
- Lift white portion of cable wires to disconnect it.

Step 7



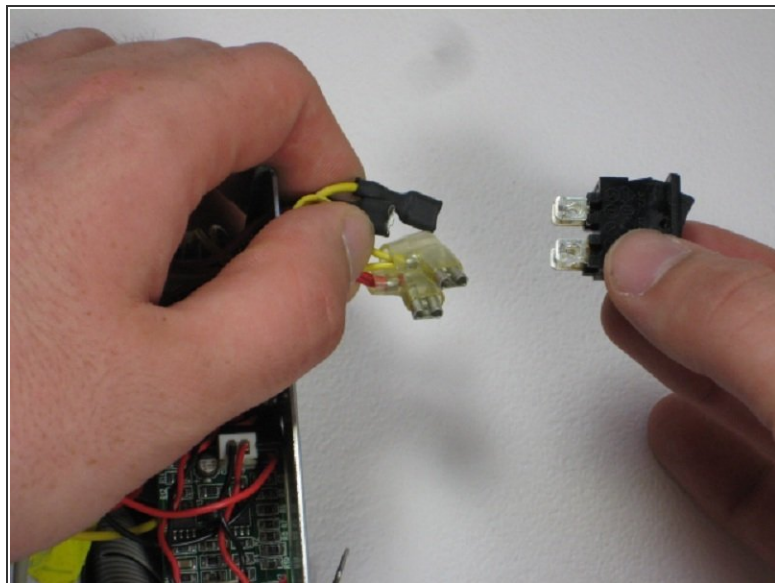
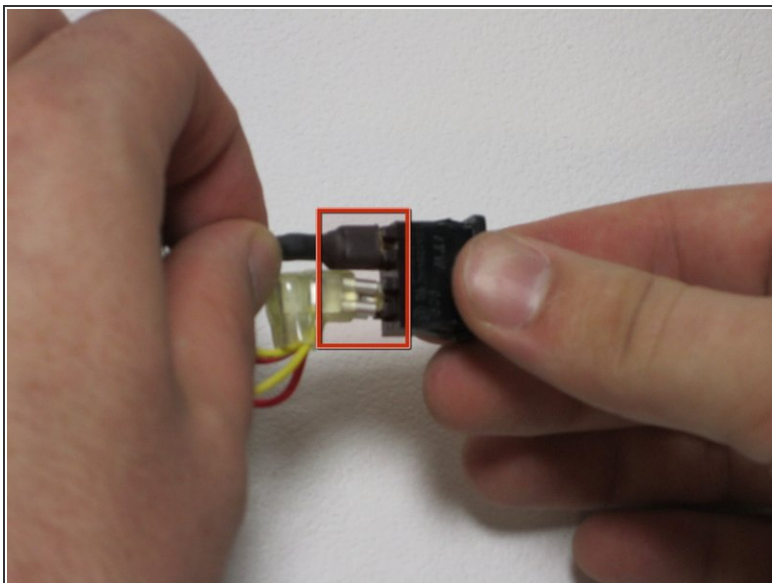
- ❗ At this point, the fan is loose and can be easily moved but not disconnected.
- Using the spudger, depress the pressure holders at all four corners of the fan.
- Take out the fan and its cords, by pulling it outward from its cavity within the device.


Step 8 — Power Switch



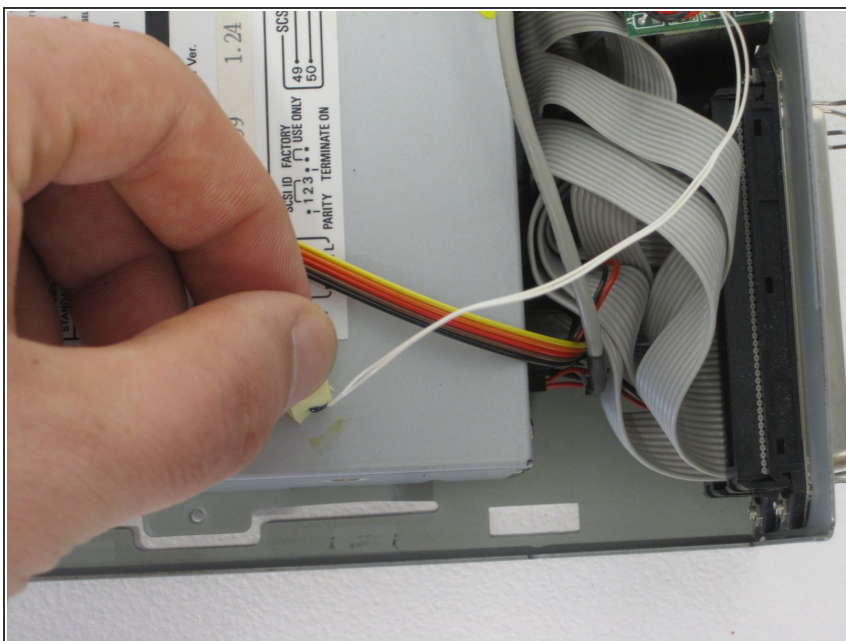
- Depress 2 pressure holds on each side of the power switch.
- Press out the back of the device.

Step 9



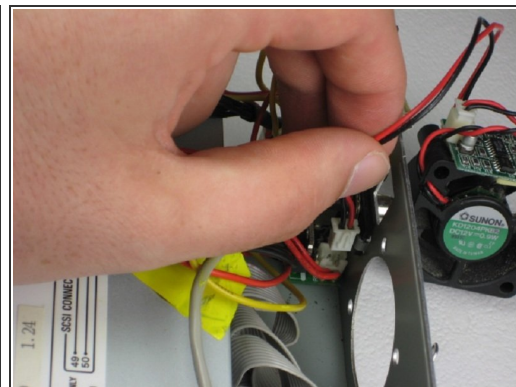
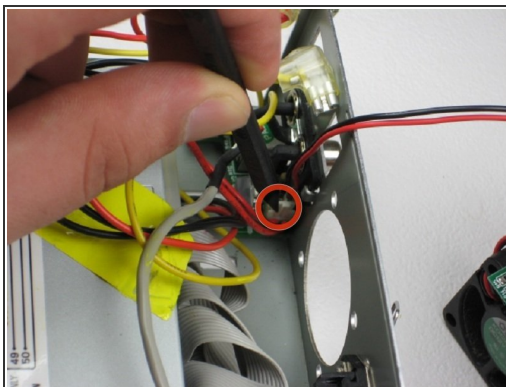
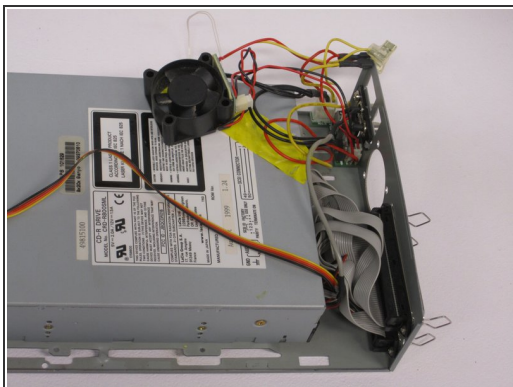
- Remove all four 4 connections from the power switch.
 - Remember that the straight connections are on the far side, while the L-shaped connections are on the near side, and that both yellow connections are on top. This is helpful for reassembly.
-  These are very hard to get off, use patience and wiggling.

Step 10 — Exhaust Fan



- Remove temperature guage.

Step 11



- Move the exhaust fan out of the way so you can access its control cord.
- Use the spudger to depress the hold on the fan cord.
- Gently pull fan cord from connection and remove fan completely.

To reassemble your device, follow these instructions in reverse order.