



Dell Inspiron 8600 Power Button Replacement

We will show you how to remove and replace the...

Written By: Brian Murphy



INTRODUCTION

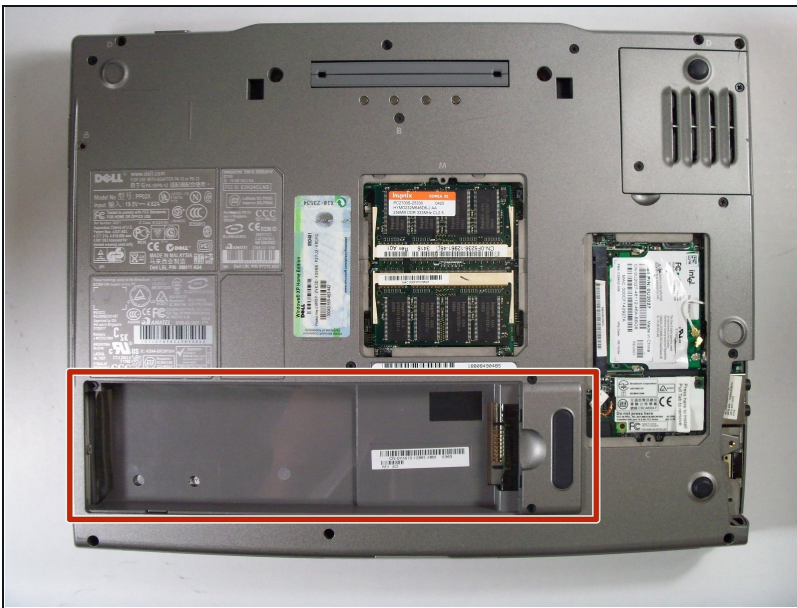
We will show you how to remove and replace the hinge cover which houses the power button.

TOOLS:


Phillips #1 Screwdriver (1)

Spudger (1)

Step 1 — Battery



- Remove the battery from the bottom left of the laptop as shown.

 **Remove the battery before operating on the computer to avoid electrocution.**

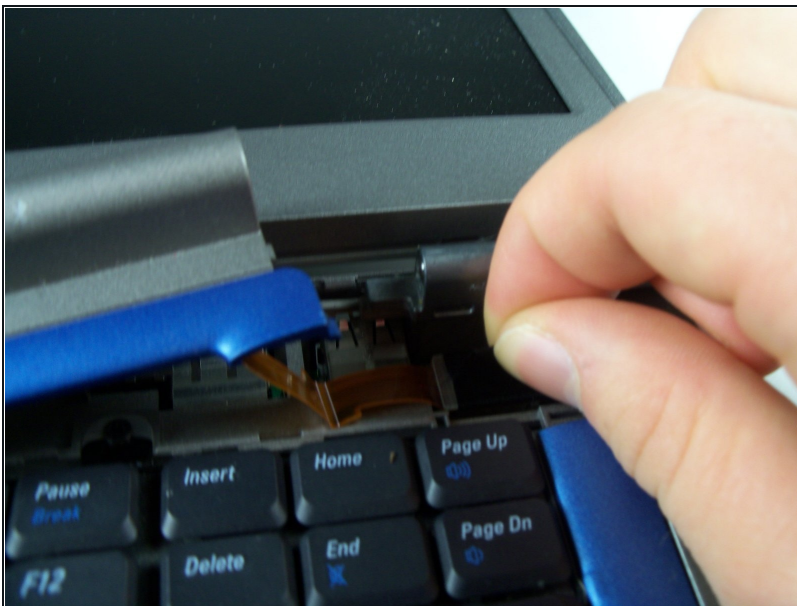
Step 2 — Power Button



- Locate the small opening at the upper left of the top blue panel which houses the power button.
- Use a spudger to lift up and remove the blue panel.

⚠ Caution: The hinge cover is still connected to the interior of the computer by a small black tab.

Step 3



- Locate the black tab at the upper right corner of the keyboard, and gently pull the black tab to the left to disconnect the hinge cover.
- You should now be able to completely remove the hinge cover.

To reassemble your device, follow these instructions in reverse order.