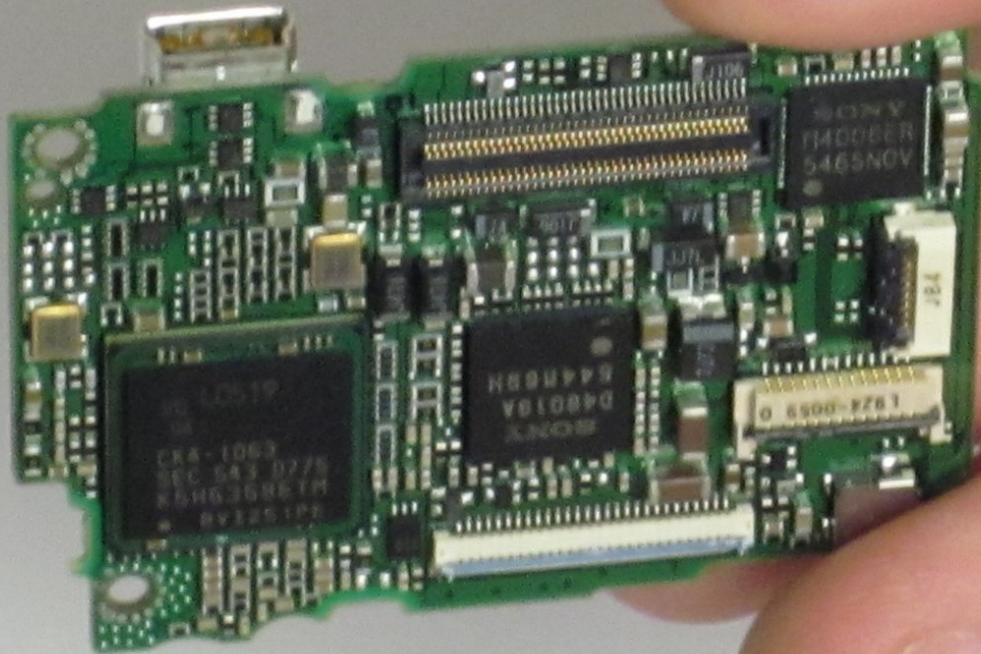




Canon Powershot SD550 Motherboard Replacement

This is a step-by-step guide on how to disassemble a Canon Powershot SD550 in order to replace the main system board.

Written By: Luke Thompson



INTRODUCTION

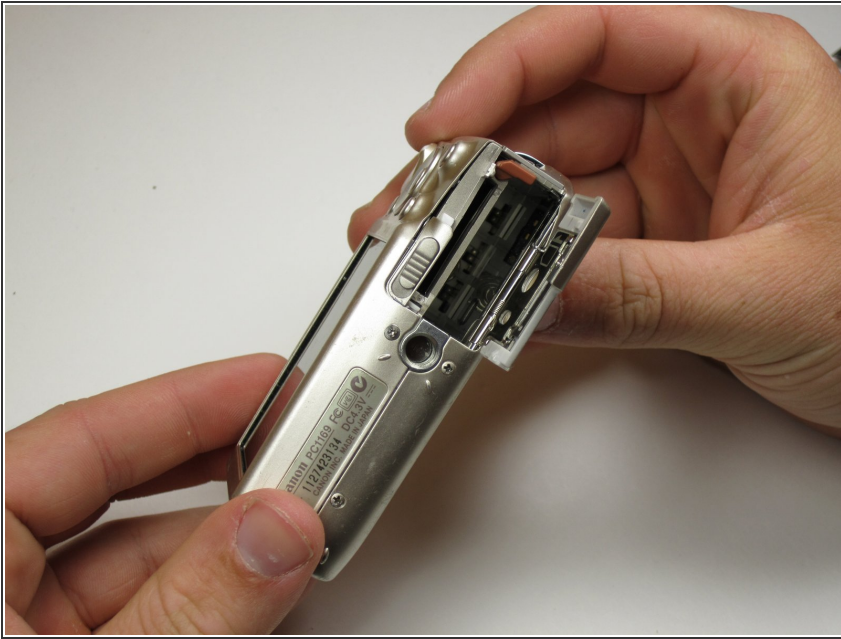
This guide provides the steps to follow to disassemble the Canon Powershot SD550 down to the main system board. Removal of the main system board is required if the existing board has failed, is in need of cleaning, or requires maintenance.



TOOLS:

- [Phillips #00 Screwdriver](#) (1)
 - [Spudger](#) (1)
-

Step 1 — Outer Case



- Remove the battery and SD card from the camera.

Step 2



- Remove the three 3.8 mm screws from the underside of the camera.
- ⓘ Each of the screws is slightly different, so it is important that you note the original location of each screw.

Step 3



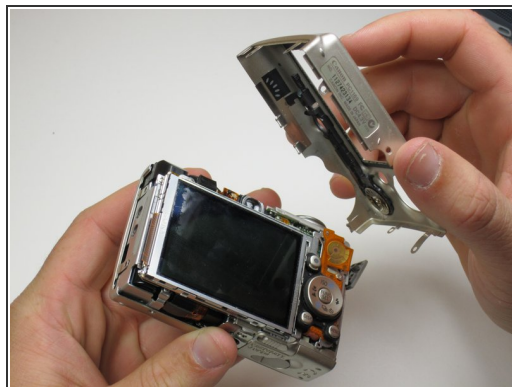
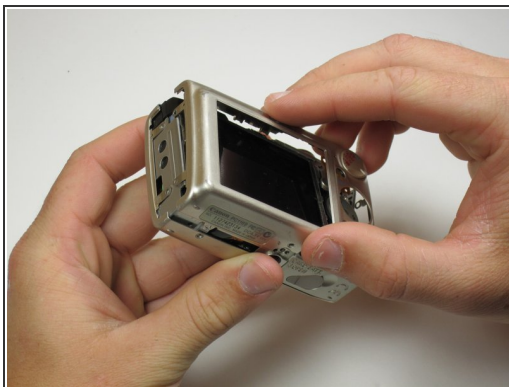
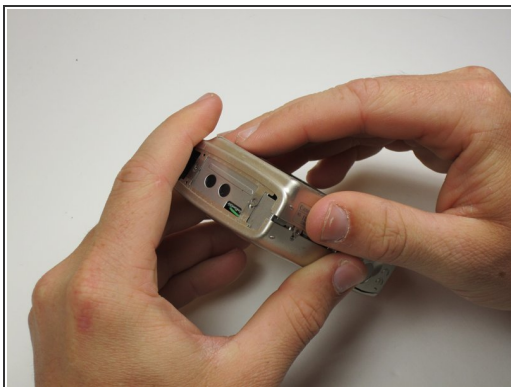
- Remove the 3.2 mm screw from the right side of the camera.
- Remove the 2.2 mm screw from the right side of the camera.
- ⓘ One of these screws is hidden under the USB port cover.
- Lift the side panel off.
- Remove the 1.8 mm screw from underneath the side panel.

Step 4



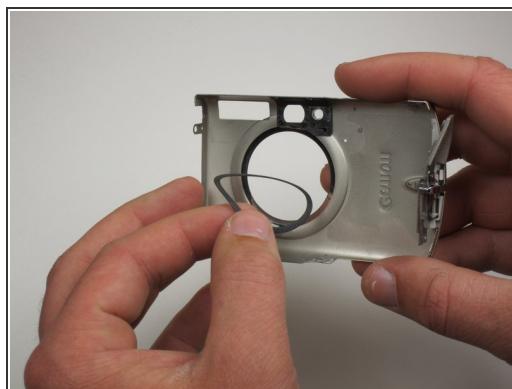
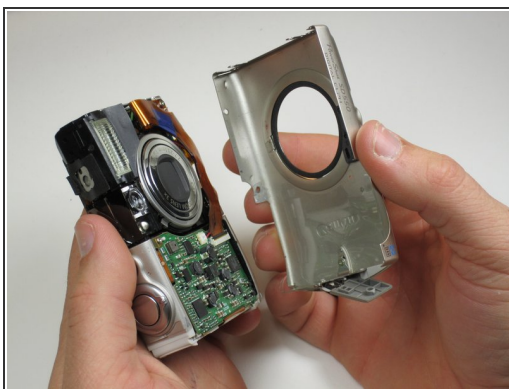
- Remove the two 2.2 mm screws from the left side of the camera.
- Lift the plate from the camera.

Step 5



- Gently lift the rear of the case to remove it from the camera.

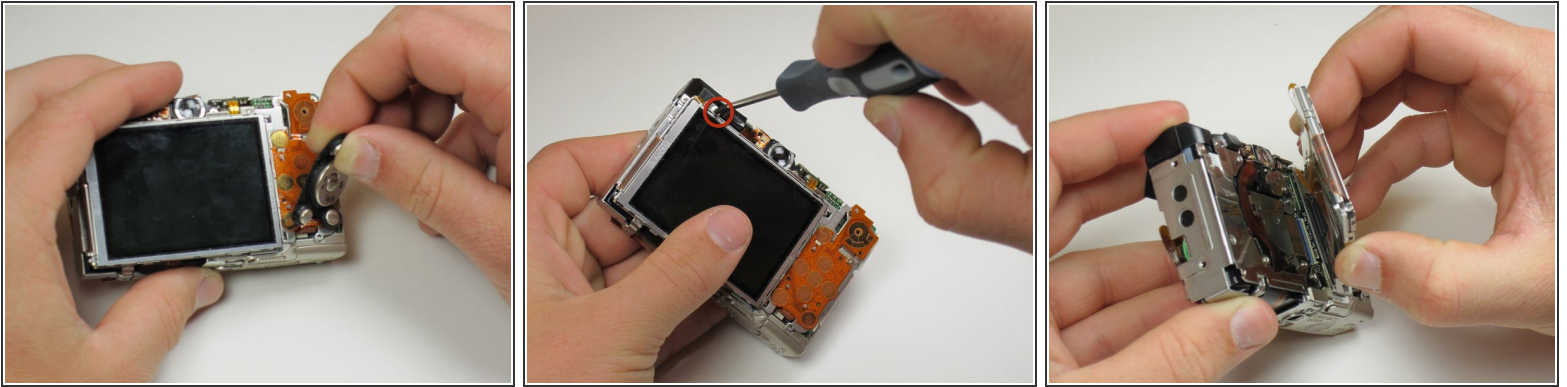
Step 6



- Remove the front of the camera body.

- ⓘ Be sure to keep track of the rubber ring.

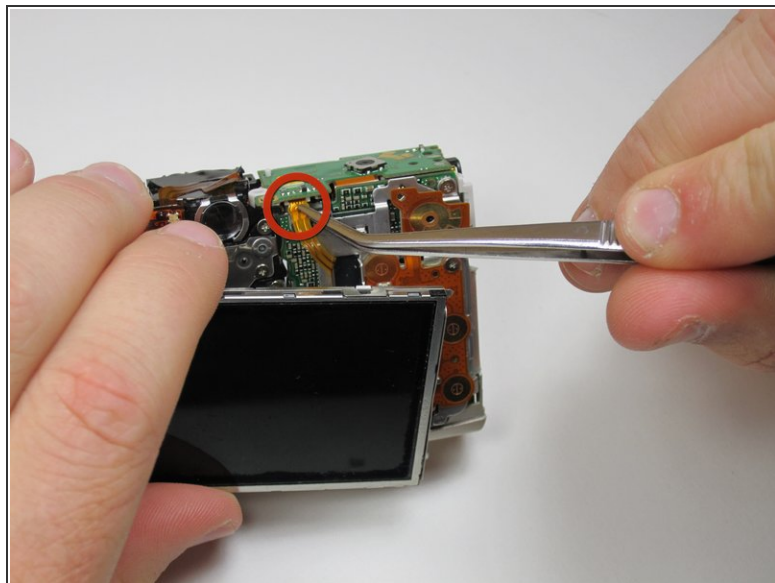
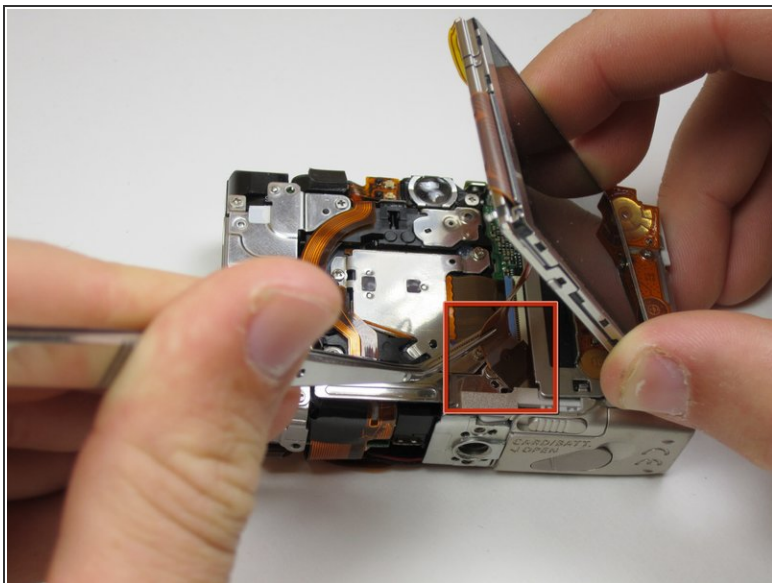
Step 7 — LCD Screen



- Peel the navigation buttons from the button panel and set them aside.
- To free the LCD display, remove the 2.9 mm screw in the top left corner.
- Rotate the screen clockwise until it lifts away from the camera.

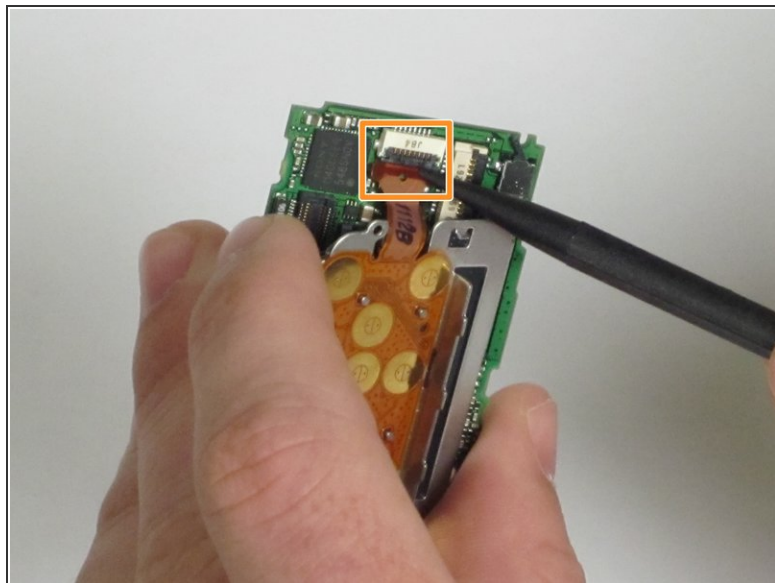
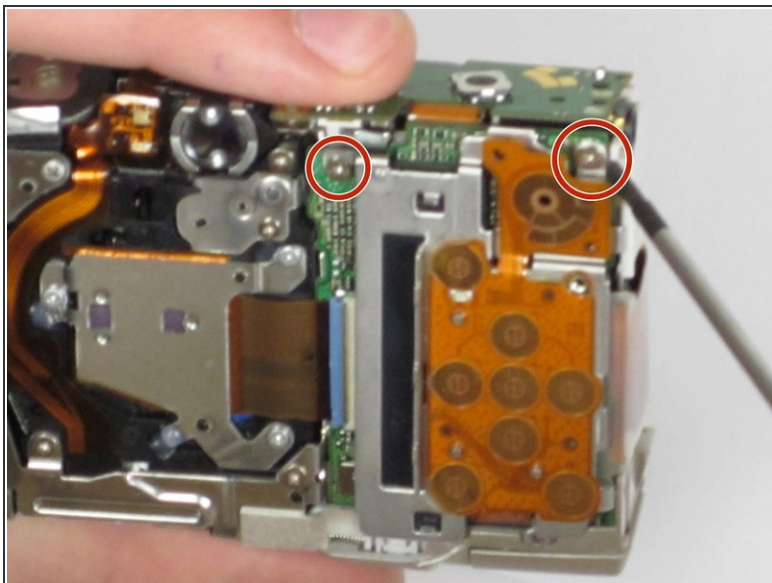
⚠ There are two ribbon cables attached to the rear of the screen. Do not try to pull the screen off at this point.

Step 8



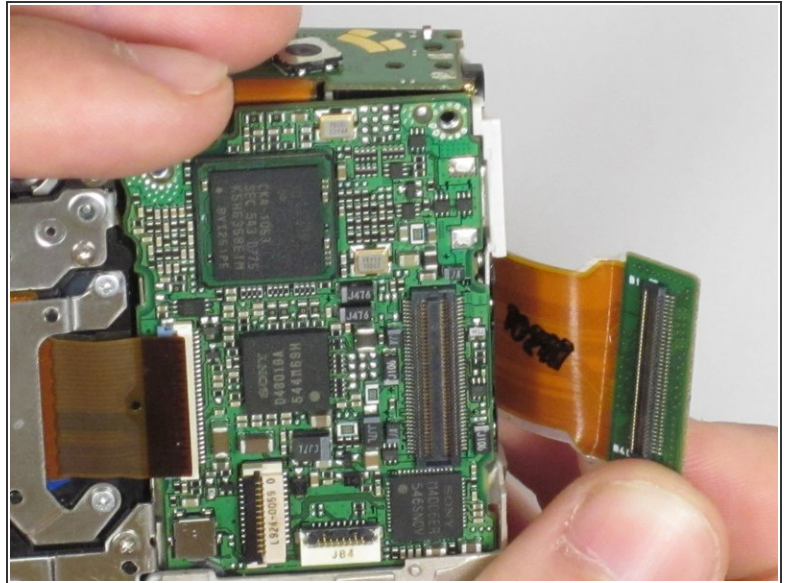
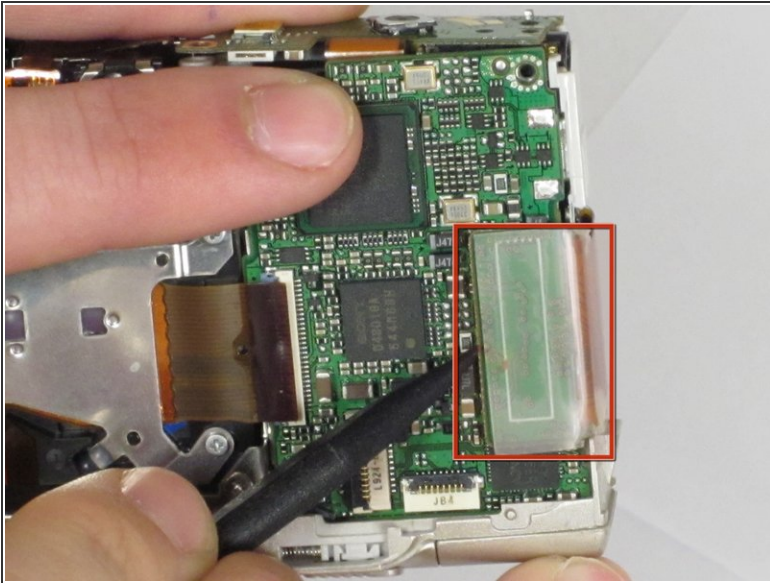
- To unplug the ribbon cables, pull them straight out of their plugs. Do this gently to avoid damaging the connections.
- After disconnecting both cables, pull the screen away from the camera to remove it.

Step 9 — Motherboard



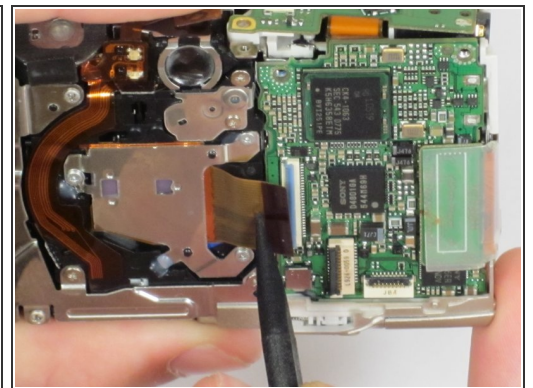
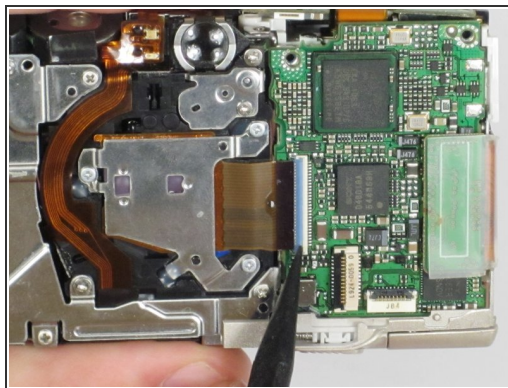
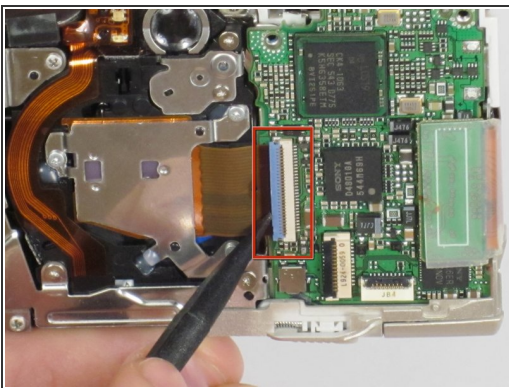
- Remove the two 3.4 mm screws still holding the button contact panel onto the camera.
- Using the spudger, disconnect the ribbon cable attaching the button contact panel to the motherboard.
- Gently pull the button contact panel away from the motherboard.

Step 10



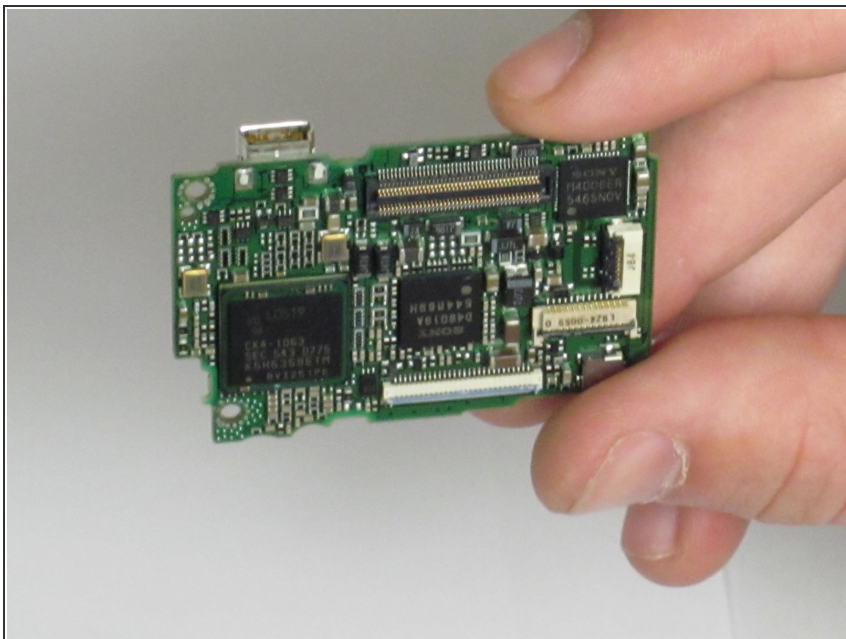
- Underneath the button contact panel, you will find a large connector.
- Using the spudger as leverage, unplug the connector, and pull it away from the motherboard.

Step 11



- The last ribbon is held in place by the blue flap. Insert the spudger under the blue flap.
- Using the spudger as leverage, flip the blue flap up, which will unlock the ribbon.
- Place the spudger into the hole in the ribbon, and pull the ribbon away from the connector.

Step 12



- Remove the motherboard by pulling it out with either tweezers or the spudger.

To reassemble your device, follow these instructions in reverse order.