



PlayStation 4 CUH-1200 Entire Console Disassembly

This guide will show you the steps to disassemble a PS4 with the model number CUH-1200A.

Written By: TronicsFix



INTRODUCTION

Sony now has 3 different models of its PS4 game console. This is the latest version and it has been changed a lot. We tore it apart to see what's different.

*Please note: You are using this guide at your own risk. TronicsFix take no responsibility and will not be held liable for any damages that may occur while using this guide.

TOOLS:

- [Phillips #0 Screwdriver](#) (1)
 - [TR9 Torx Security Screwdriver](#) (1)
 - [Small Needle Nose Pliers](#) (1)
 - [Probe and Pick Set](#) (1)
-

Step 1 — Unboxing the PS4 CUH-1200



- CUH-1200A Unboxing

Step 2 — Let's get this thing torn down!



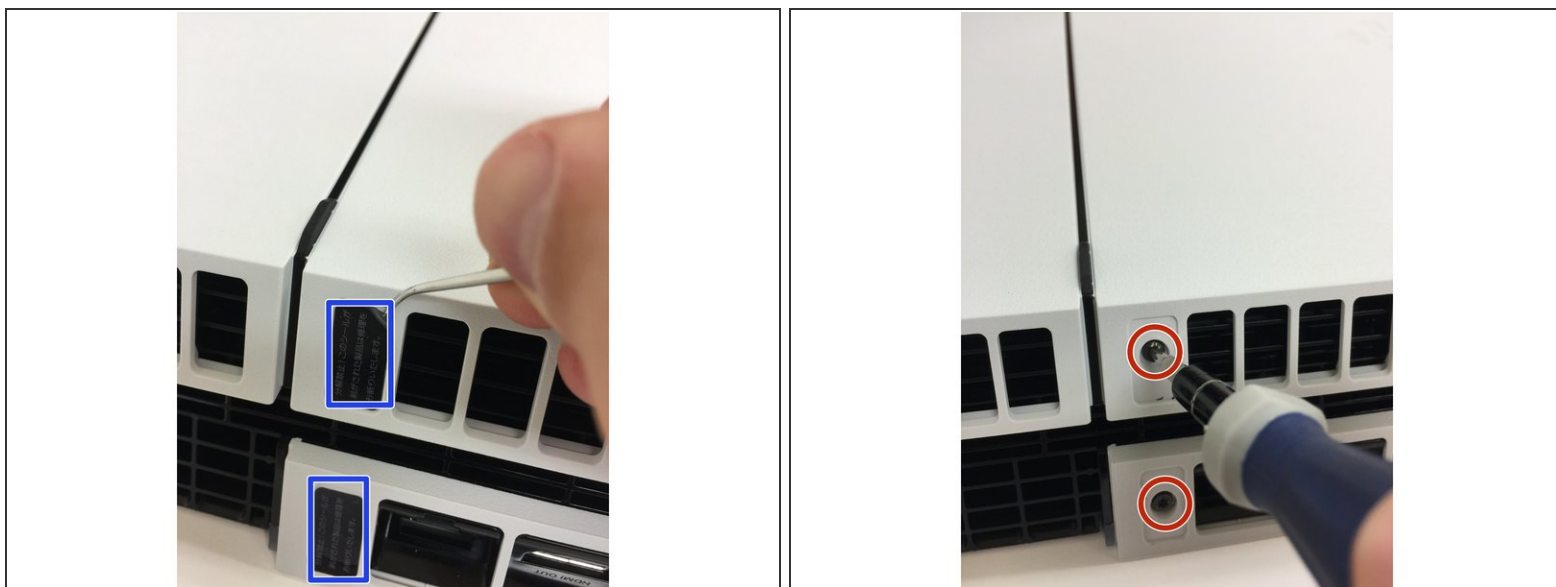
- The hard drive cover slides off just like on previous models.

Step 3 — Remove Hard Drive



- The hard drive has one screw that needs to come out then it slides right out.
- You'll need a PH 0 screwdriver for this step.

Step 4 — Remove Warranty Stickers - Our Favorite Part!



- Using a pick or something similar, peel off the warranty stickers to reveal two black T9 security torx screws.
- Remove the two T9 security torx screws.
- This is the first major revision we find...there are only two screws that hold the plastics on. The previous models had four.

Step 5 — Remove Top Cover



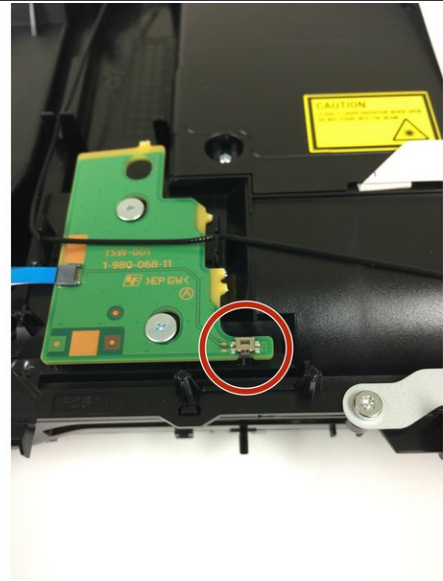
- FIRST remove the two screws securing the top cover to the PS4. Removing the top cover will be easier if you follow these steps in order:
 - 1) Grab underneath of the top cover near the power button.
 - 2) Pull up...you will hear it click or snap as you pull up.
 - 3) Move your hand over to the opposite side of the top cover and pull up here as well.
 - 4) After pulling up both sides of the top cover it should now slide back and off of the PS4.
- We now have our first view of the inside of the CUH 1200. The first thing we notice is that the motherboard is much, much smaller and the APU clamp has been completely redesigned. The inside of this model is completely different than previous models.

Step 6 — Remove Bottom Cover



- To remove the bottom cover you'll need to pull up very hard on each side of the cover near the back of the console.
- You may be able to pull just with your hands but you might also need to use some opening tools to pry it off.
- We get our first view of the components on the underside of the console. Looks like we have a redesigned power supply and optical drive.

Step 7 — Notice the Buttons!



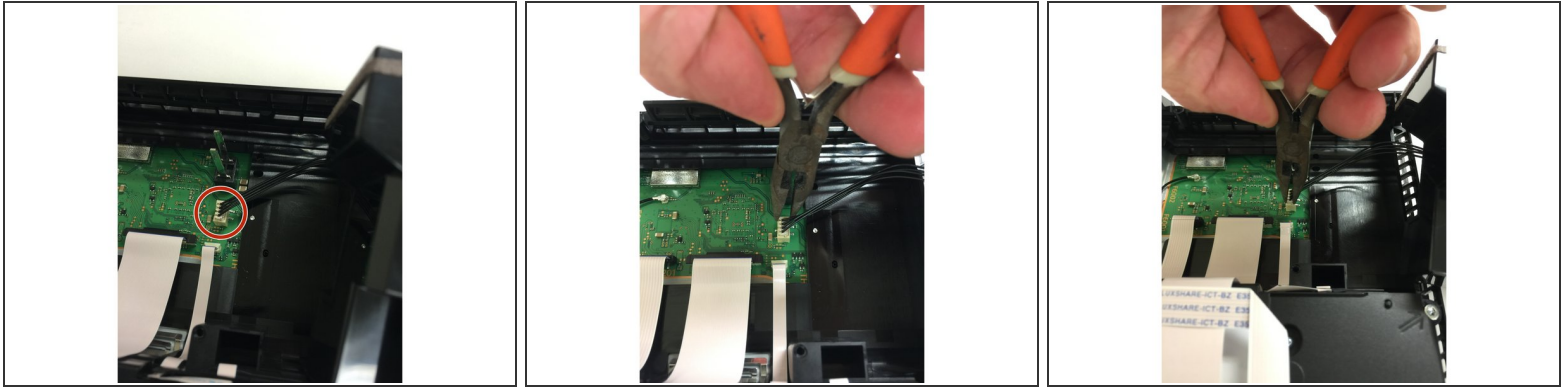
- After we remove the bottom plastic we see the physical eject button that Sony has decided to use. This is another significant change over the previous models.
- We're guessing this change is to help prevent the "random ejecting" of discs that plagued the previous models.

Step 8 — Remove the Power Supply



- Remove the three T9 torx screws then the two phillips PH 0 long screws.
 - Pull up on the left side (the side without the four wires), then on the right side. The right side of the power supply will be harder to pull up on so you'll need to pull firmly.
- ⚠ After you get it loose you'll be able to pull it up a bit but it will still be connected by the four wire connector so don't pull it all the way out until that has been disconnected (shown in the next step).

Step 9 — Remove the Power Supply Connector

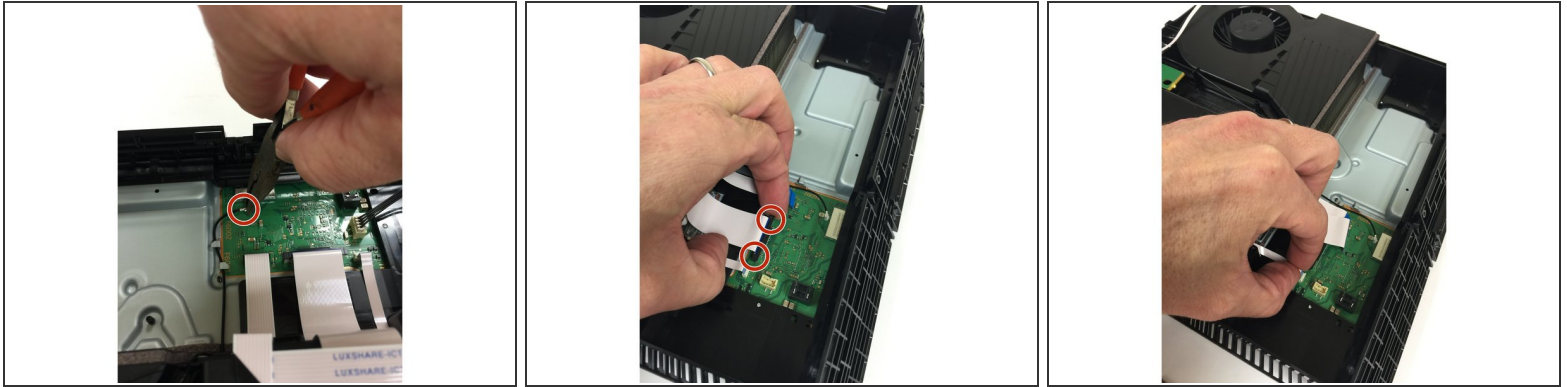


- You'll need to disconnect this four wire connector from the motherboard.
- The best way we've found is to use mini pliers. Pull up on one side then the other. Go back and forth one side at a time until it pops off.
- The power supply can now be removed.

⚠ Use caution as this connector is easily pulled off the motherboard.

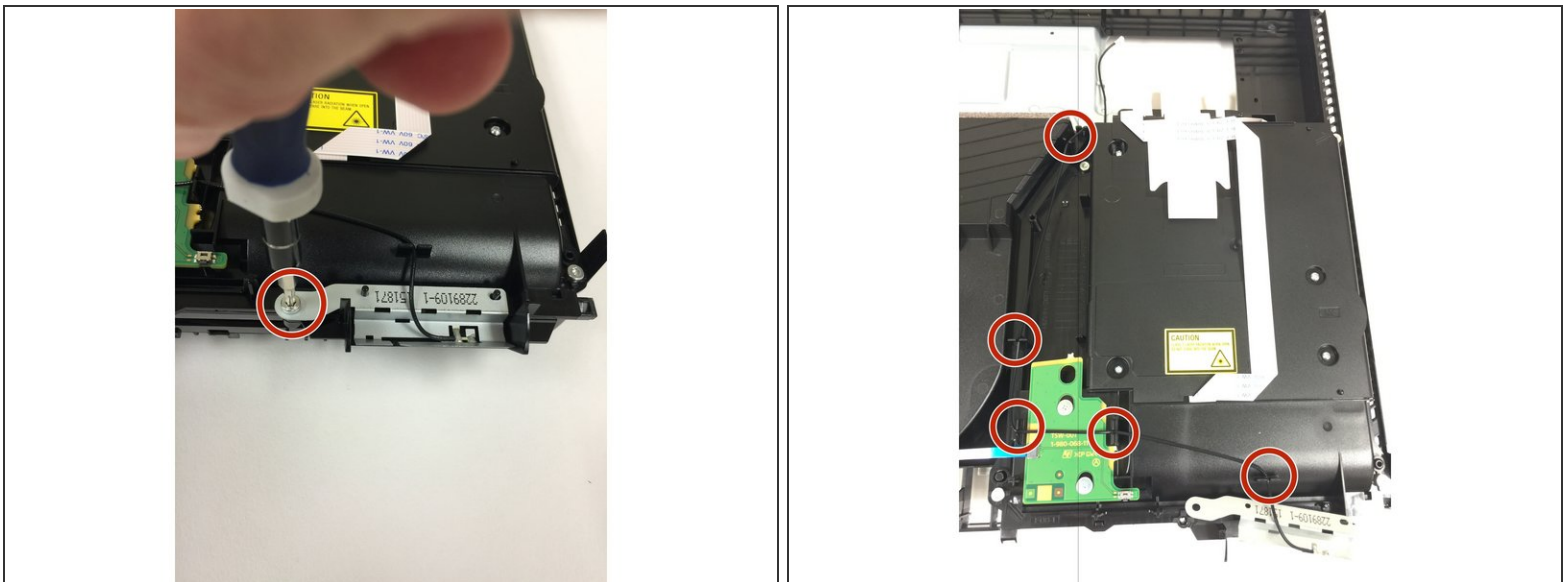
⚠ Be sure that you are pulling on the connector for the wires that go to the power supply itself and NOT on the connector on the motherboard.

Step 10 — Disconnect Wifi Antenna and Optical Drive Cables



- Using the same pliers grasp the WiFi antenna cable and pull up carefully
- The really wide optical drive cable has a black "collar" that needs to be lifted up on each side. This will free the cable.
- The other two cables can just be pulled right out of their respective sockets.

Step 11 — De-route and Remove WiFi Antenna



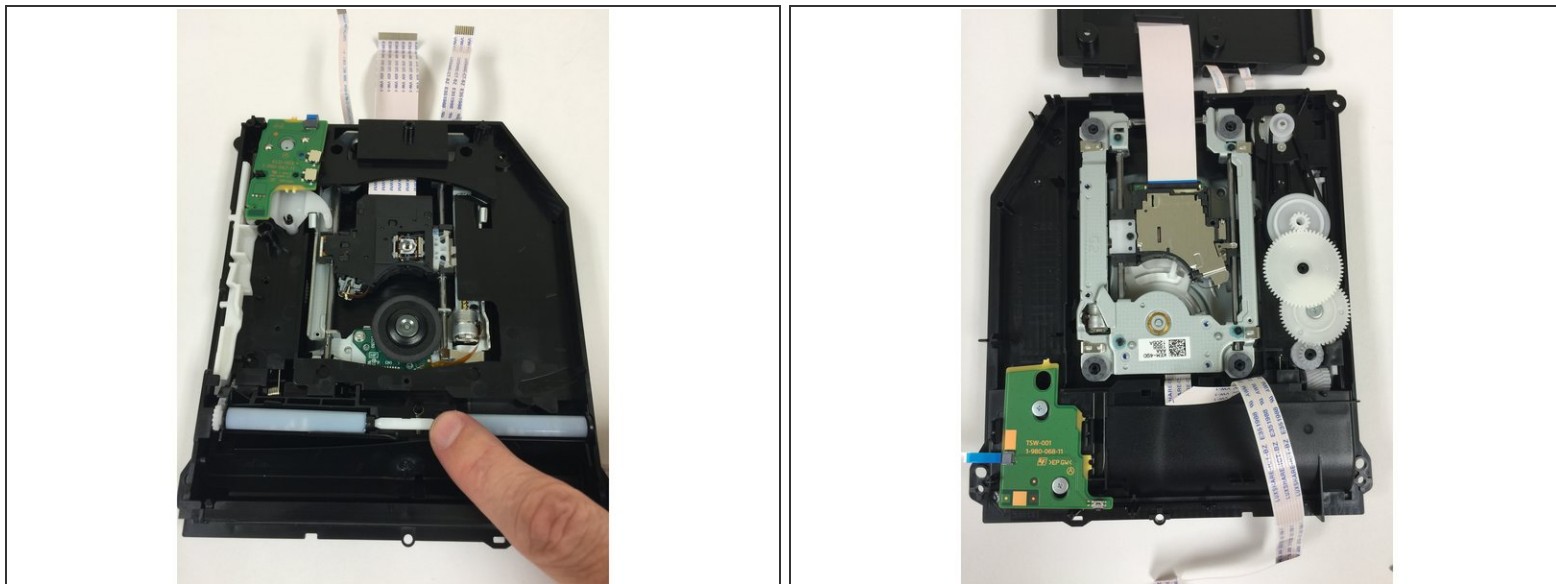
- Remove the T9 security torx screw that secures the WiFi antenna.
- De-route the WiFi cable.

Step 12 — Remove Optical Drive



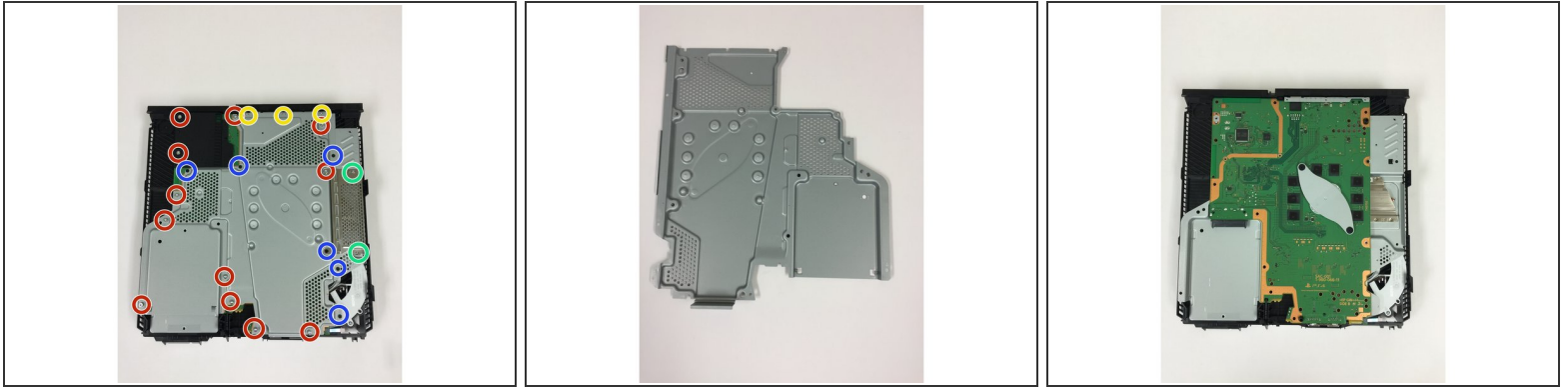
- Remove small ribbon cable from optical drive.
- Remove five T9 security torx screws
- Remove two PH 0 phillips screws along with the green PCB board.

Step 13 — Optical Drive Notes



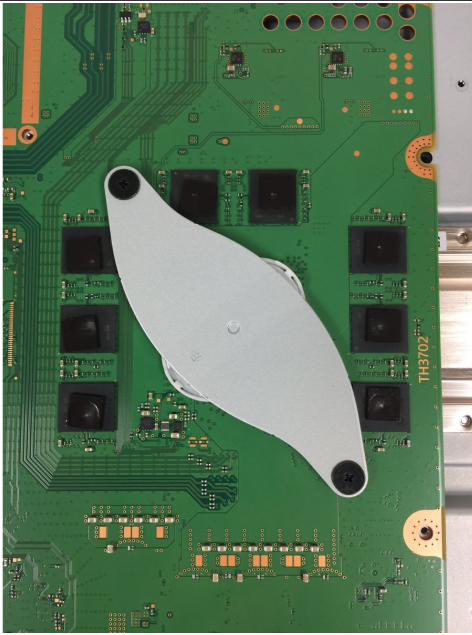
- Even though the optical drive has been redesigned they still use the same roller system with the white bar in between. We're guessing that there will still be problems with these white bars falling out.
- The laser and carrier look very similar to the previous models.

Step 14 — Remove Top Metal Shield



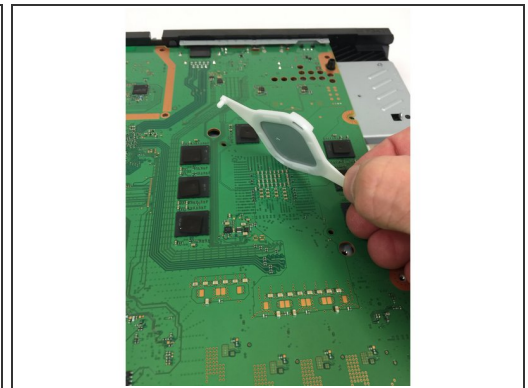
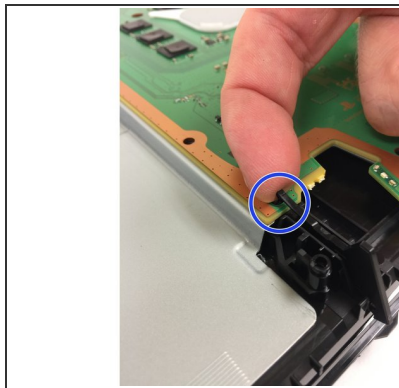
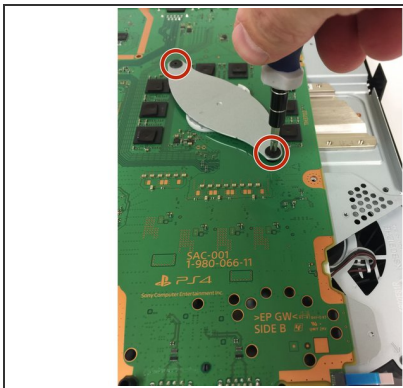
- Remove twelve T9 security torx screws
 - ⓘ Be careful to not lose the small metal nut under the black cover on the top left side. This nut is for one of the two long screws that hold the power supply that was removed in previous steps.
- Remove six PH 0 phillips screws
- Remove three PH 0 phillips screws
- Remove two PH 0 phillips screws
- Pull the top metal shield off of the console.

Step 15 — Motherboard Notes



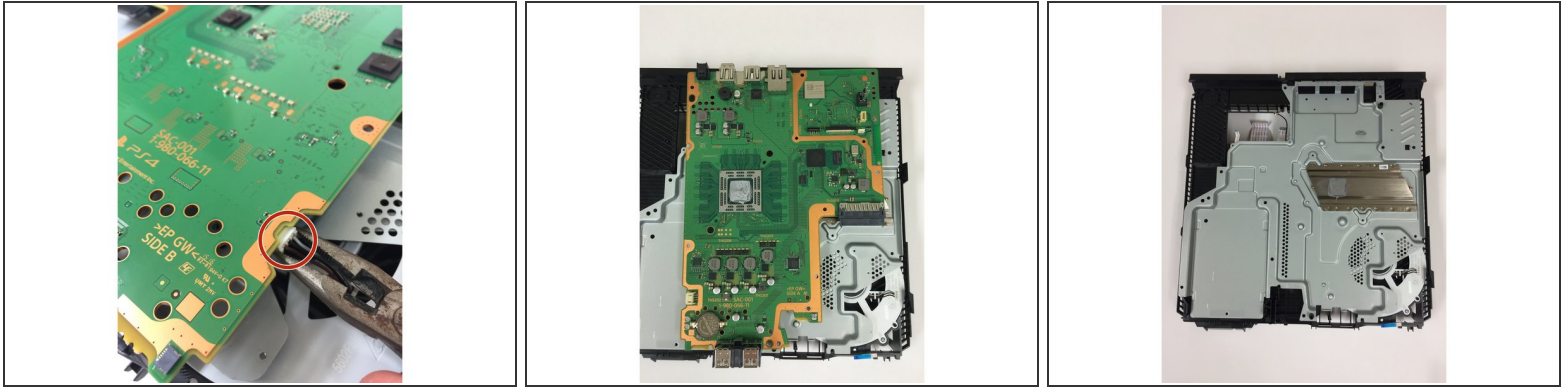
- The first thing we notice (other than the size) about the motherboard is that Sony has totally re-designed the heat sink clamp. We're guessing (and hoping) this will reduce or eliminate the problem of PS4's turning on then back off.

Step 16 — Remove Heat Sink Clamp and Power Button



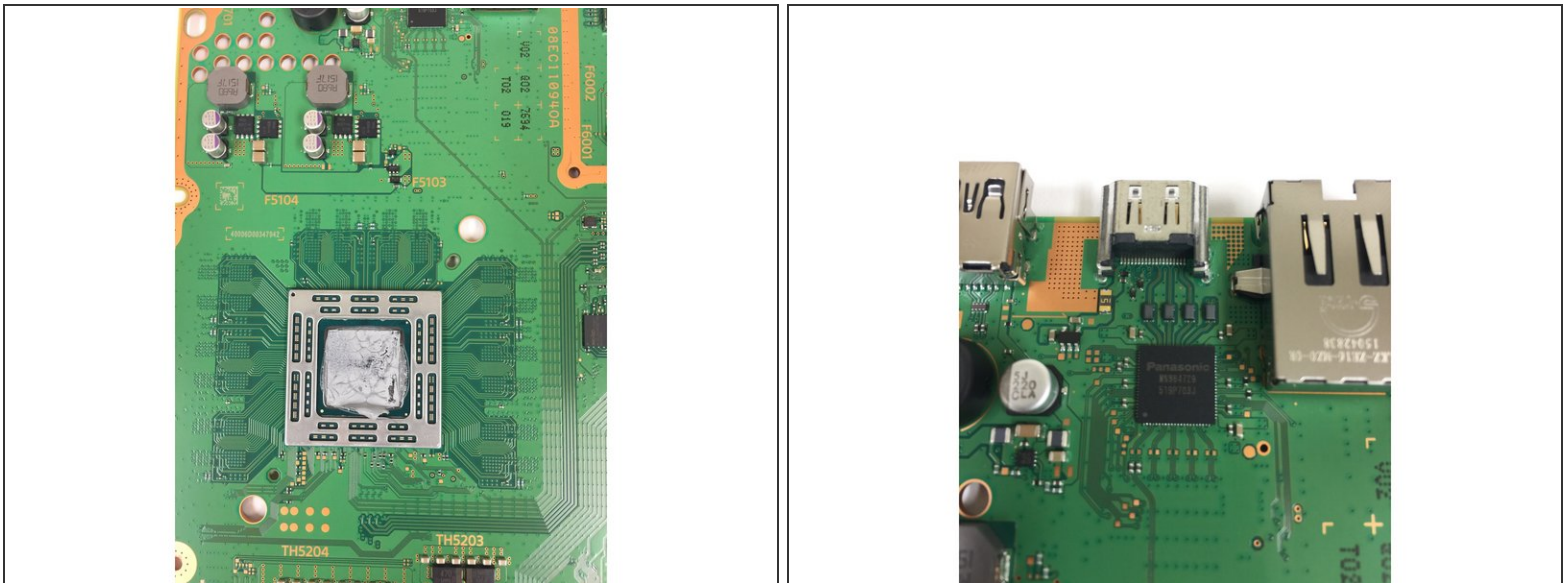
- Remove the two PH 0 Phillips screws.
 - After the clamp is removed the spacer under it will also need to be removed.
- Remove the power button by prying up on the hook that's hooked into the motherboard.
 - After the hook is lifted the button will slide back and out.

Step 17 — Remove Motherboard



- As you lift up on the front of the motherboard you will notice that the fan is still plugged in. This can be removed by grasping the connector with a pair of small pliers.
- After that is removed the motherboard will lift out.

Step 18 — Motherboard Notes



- We can now see one of the huge differences between the older models and this new model...there's no RAM on one side of the motherboard!
- There is still the same amount of RAM but the total number of RAM chips has been cut in half.
- In other news, the HDMI port has finally been redesigned! This is great news as the old style is very prone to failure.

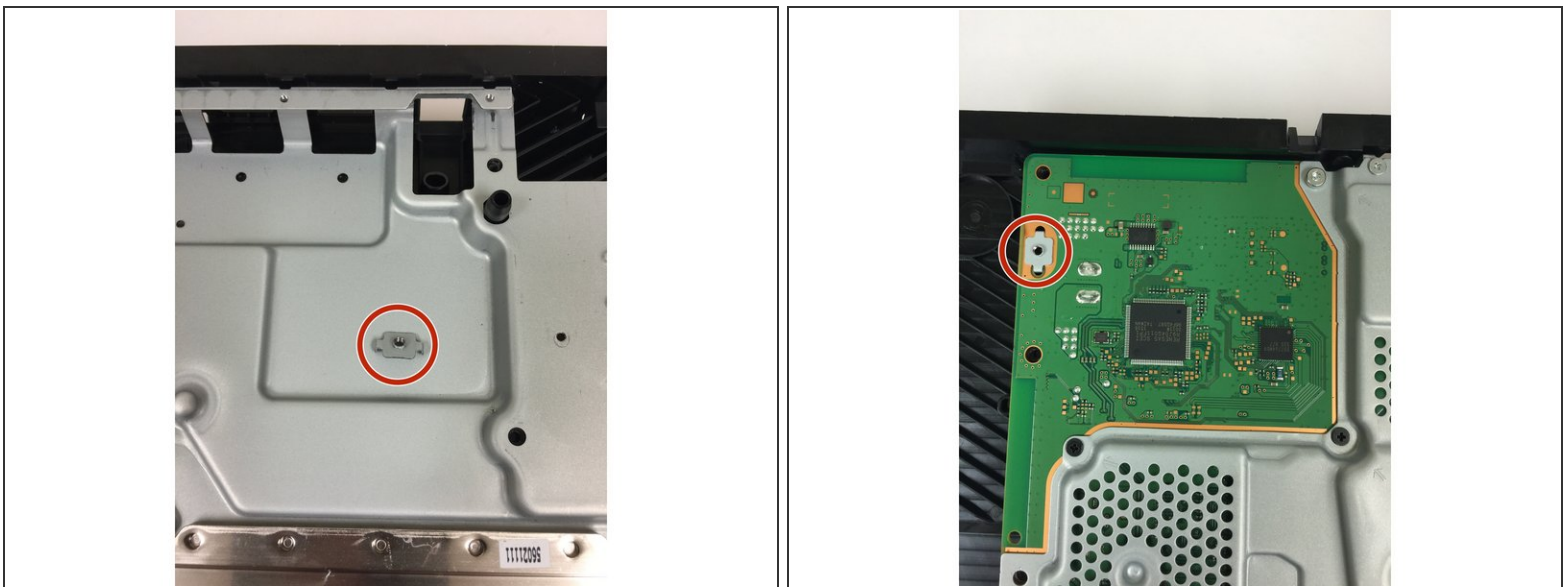
This document was generated on 2021-04-22 05:01:23 AM (MST).

Step 19 — Remove Fan



- Remove three PH 0 phillips screws then remove the metal piece.
- With that gone there is only one screw (PH 0) holding the fan in. Remove it and you're done!

Step 20 — Loose Piece Warning!



- As we started assembling this PS4 we noticed this small piece laying in on the bottom metal sheet. As we reassembled the console we found that it went on the top of the motherboard where one of the long power supply screws goes it. There is a black plastic piece that will cover it.

Step 21 — Conclusion



- With this drastically different model of PS4 we are hoping that Sony has addressed some of the problems with the older models (HDMI port, etc). We are cautiously optimistic that they have.