



Samsung Galaxy Tab 4 8.0 Verizon Motheboard Replacement

In this guide, you will learn how to replace...

Written By: Ofelia Cruz



INTRODUCTION

In this guide, you will learn how to replace the motherboard- the very foundation of the tablet's function. Though you might be frightened to replace such a complicated component of the tablet, do not worry. The many steps involved in the process take up quite some time, but are fairly easy to follow. All you need for the motherboard replacement are a good set of tools and this detailed guide to follow.

TOOLS:

[iFixit Opening Tool](#) (1)
[Tweezers](#) (1)

PARTS:

[Galaxy Tab 4 8.0 Screen](#) (1)
[Galaxy Tab 4 8.0 Speaker](#) (1)

Step 1 — Rear Case

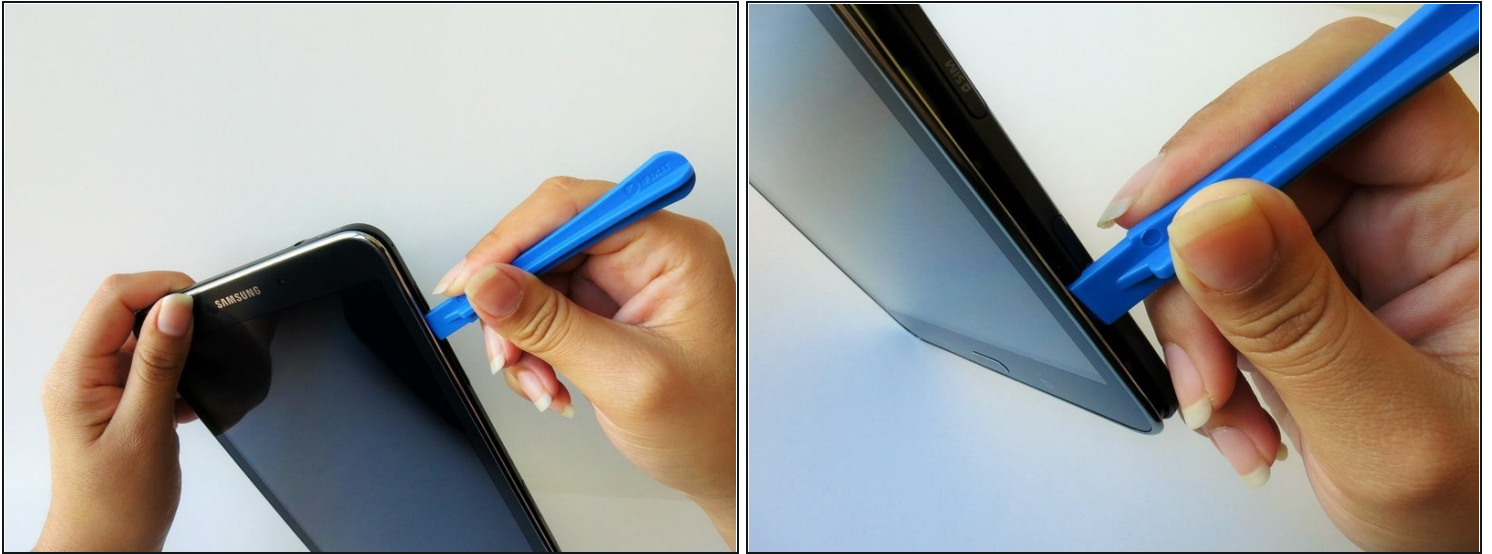


 Before disassembling your Samsung Galaxy Tab 4 8.0, be sure it is powered off and you remove the SIM and Micro SD cards.

- At the top of the tablet, nudge the blue plastic opening tool between the back plastic casing and the front panel's metal rim.

 Do not use excessive force when prying the clips, fastening the casing together, open because they can easily break.

Step 2



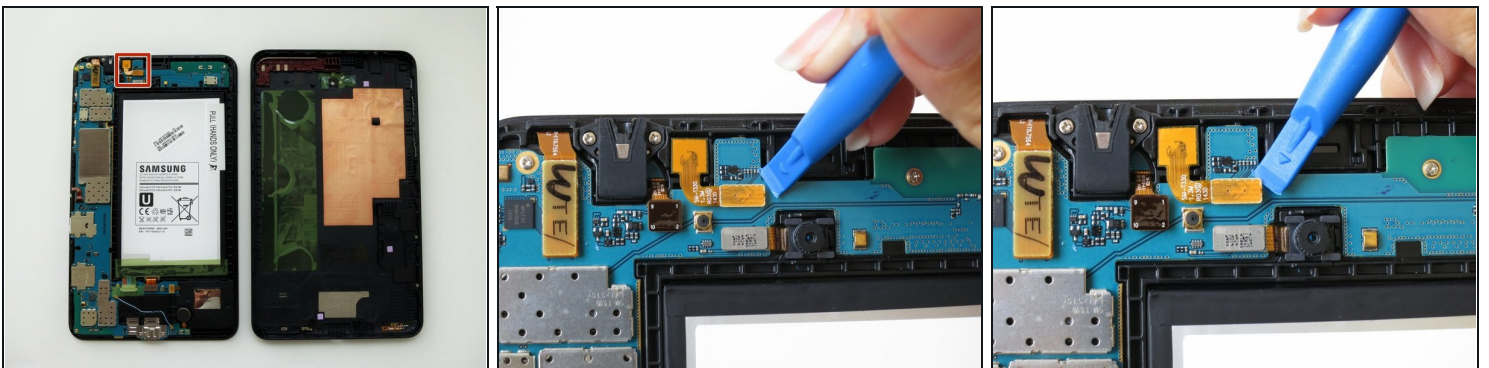
- Continue prying the blue plastic opening tool along the perimeter of the tablet to separate the back plastic casing from the front assembly panel.
- ① As right-handers, we found it easiest to move clockwise and use more pressure around the corners to facilitate the process.
- ① You might hear several popping noises caused by the plastic clips coming undone.

Step 3



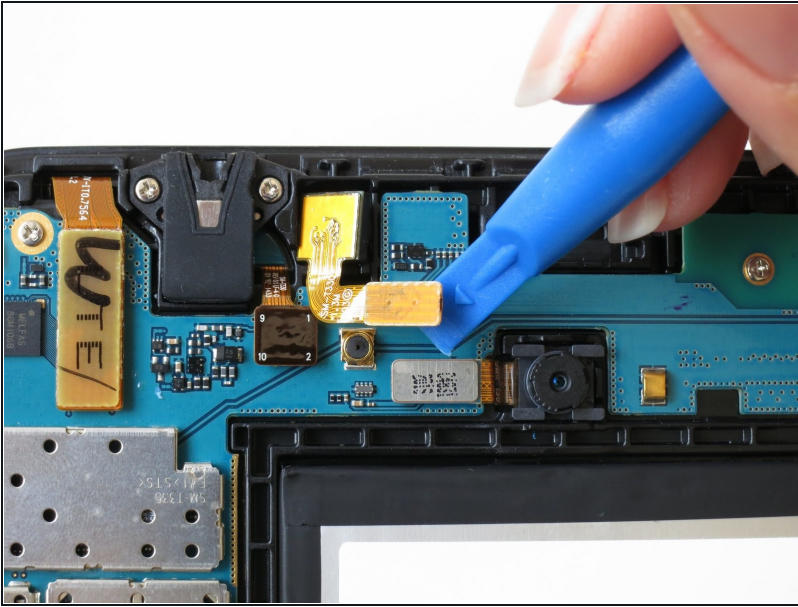
- To avoid damaging the screen, gently set the tablet with the LCD screen faced down.
- Firmly grasp the back plastic casing and lift it away from the front assembly panel.

Step 4 — Front Facing Camera



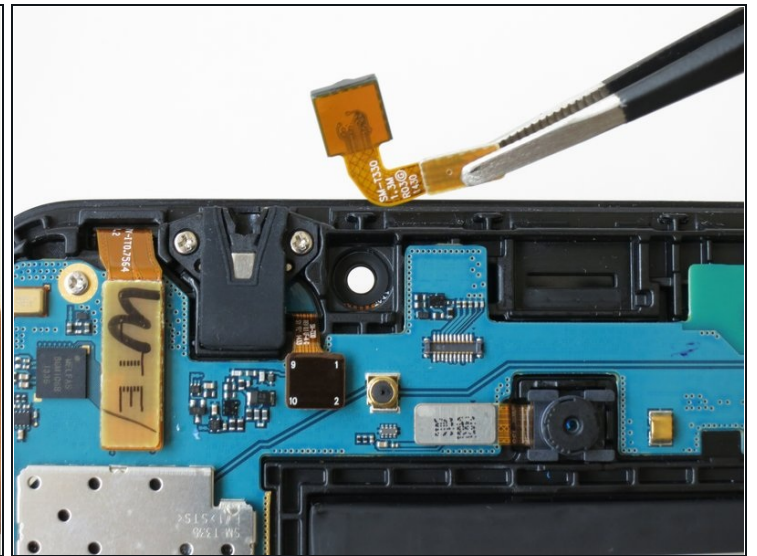
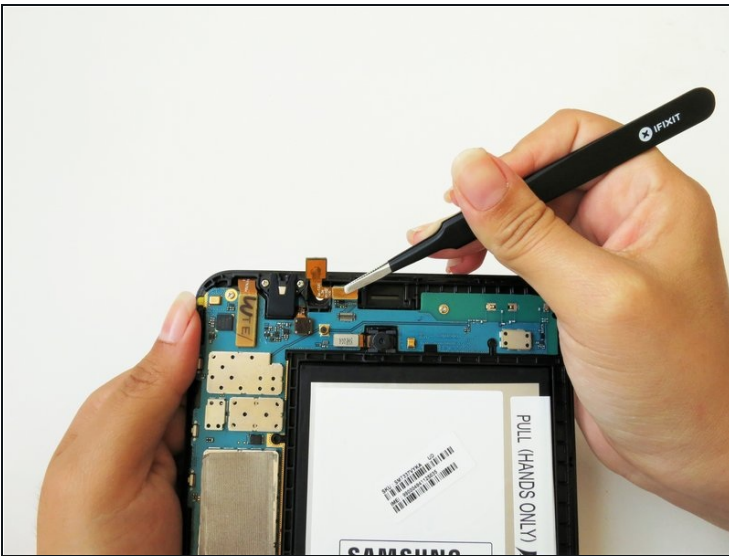
- The front camera's ribbon cable is located just above the battery, slightly to the left.
- Carefully insert the flat end of the blue plastic opening tool under the connector at the end of the ribbon cable.

Step 5



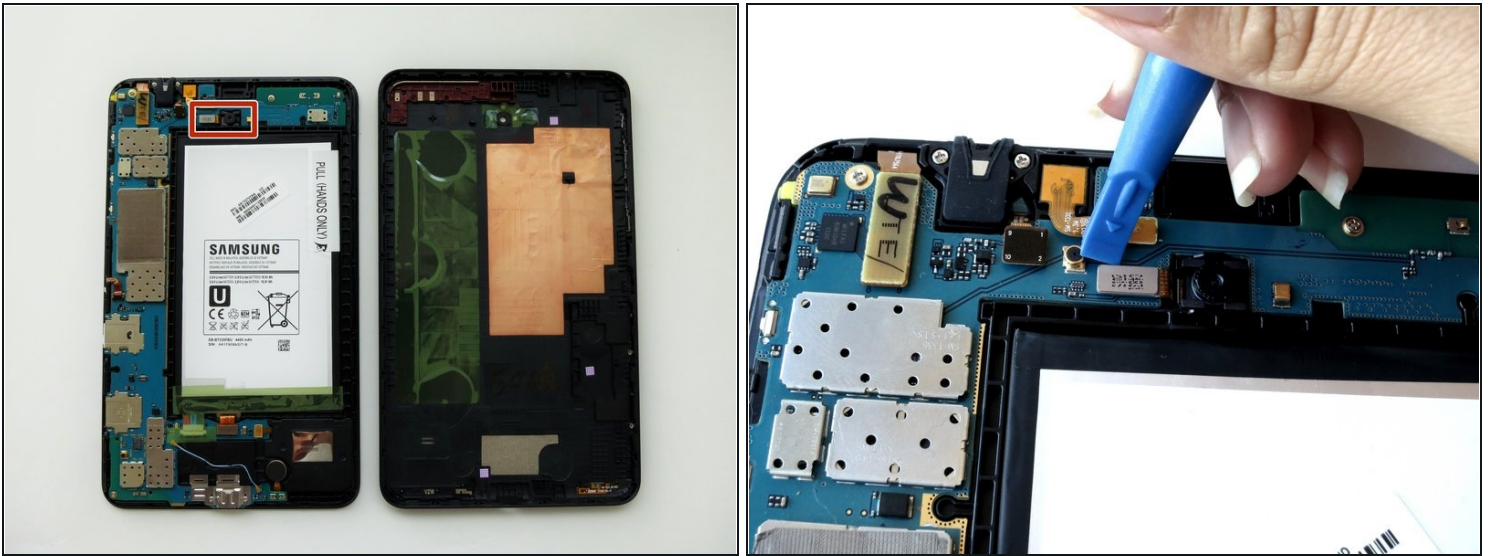
- Slightly apply pressure and move the blue plastic opening tool downwards to pop the front camera's gold rectangular connector from its socket on the motherboard.

Step 6



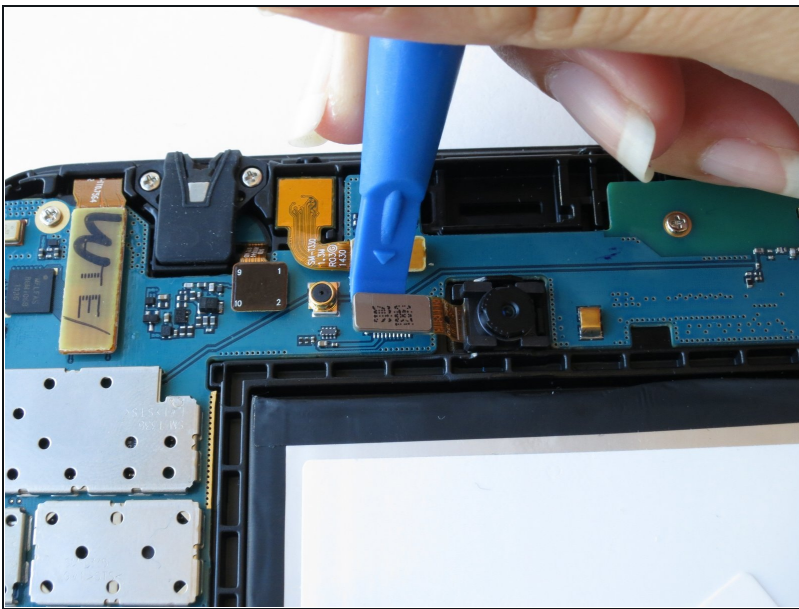
- Squeeze the gold rectangular piece with the [tweezers](#) to gently lift it from its pit.

Step 7 — Rear Facing Camera



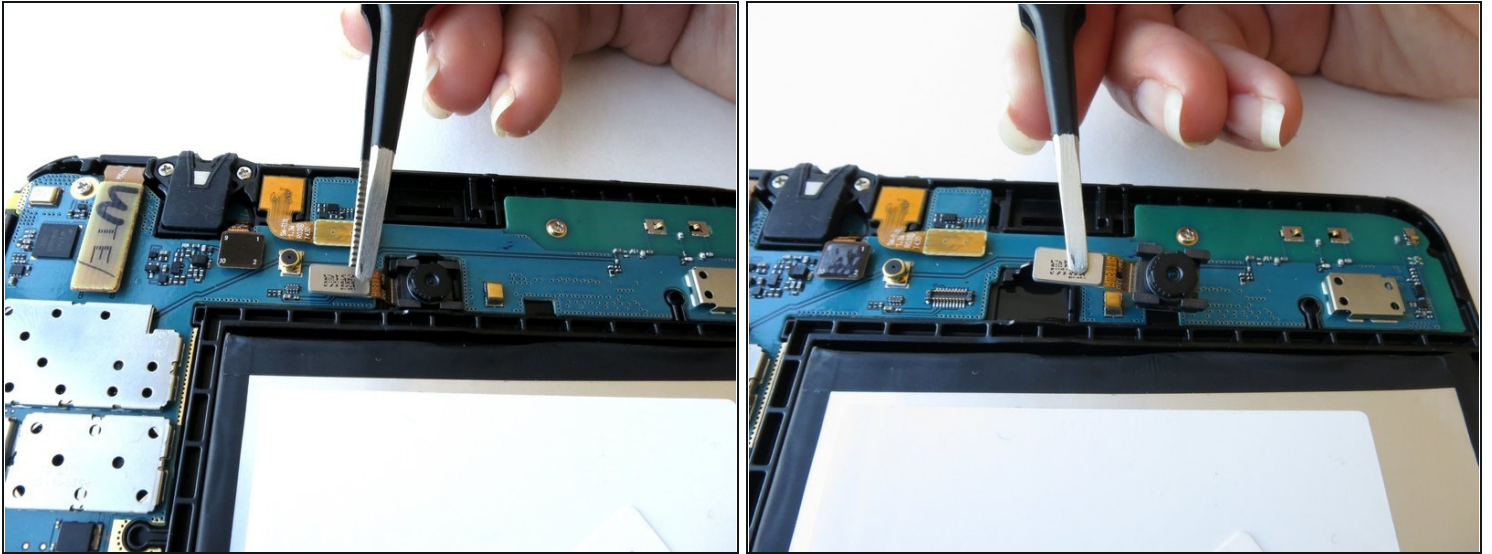
- The back camera will be located near the top of the tablet in the center above the battery.
- Carefully insert the flat end of the blue plastic opening tool under the metal rectangular end of the back camera's cable connector.

Step 8



- Slightly apply pressure and move the blue plastic opening tool downwards to pop the back camera's metallic rectangular connector from its socket on the logic board.

Step 9



- Squeeze the metallic rectangular piece with the [tweezers](#) to gently lift it from it's pit.

Step 10 — Battery



- Peel up the detachable corner of the white plastic sticker that reads “pull (hands only).”
- ⓘ Remove the sticker to form a tab.

Step 11

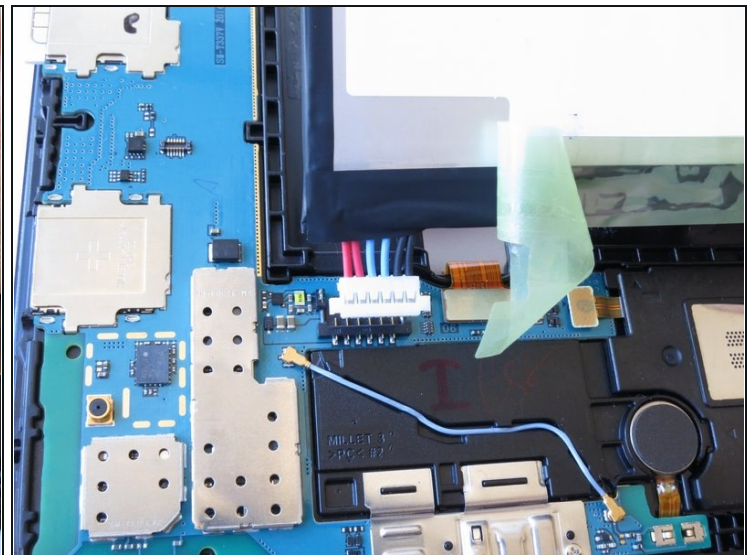
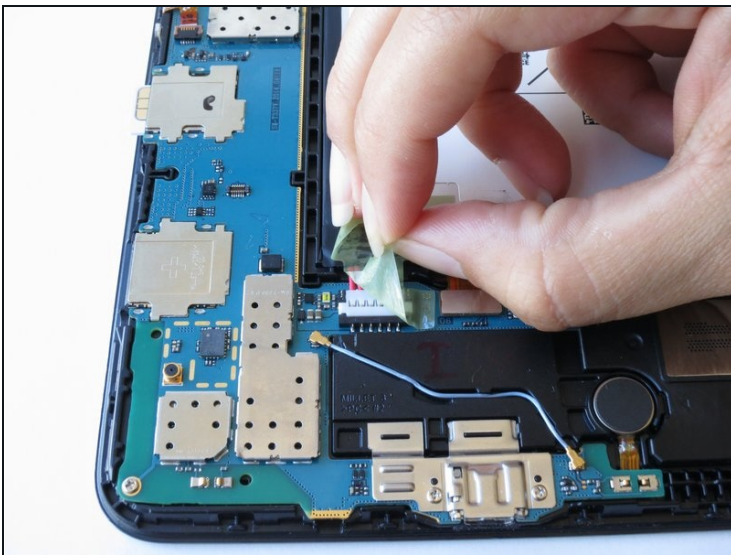


- Using your thumb and index finger, pinch the tab and pull it up to remove the top right corner of the battery from the front panel assembly.

ⓘ If battery resistance is encountered due to adhesive, use the flat end of a spudger to run in between the battery and the front panel assembly.

⚠ Do not completely detach the battery just yet, doing so can cause damage to the red and blue cables located at the bottom of the battery.

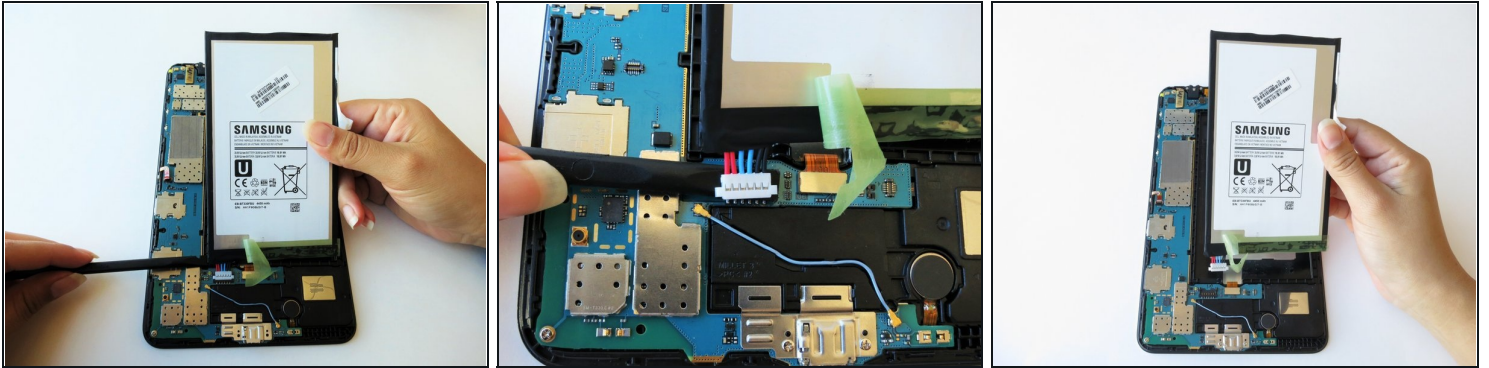
Step 12



- Starting at the bottom left side of the battery, gently remove the green tape.

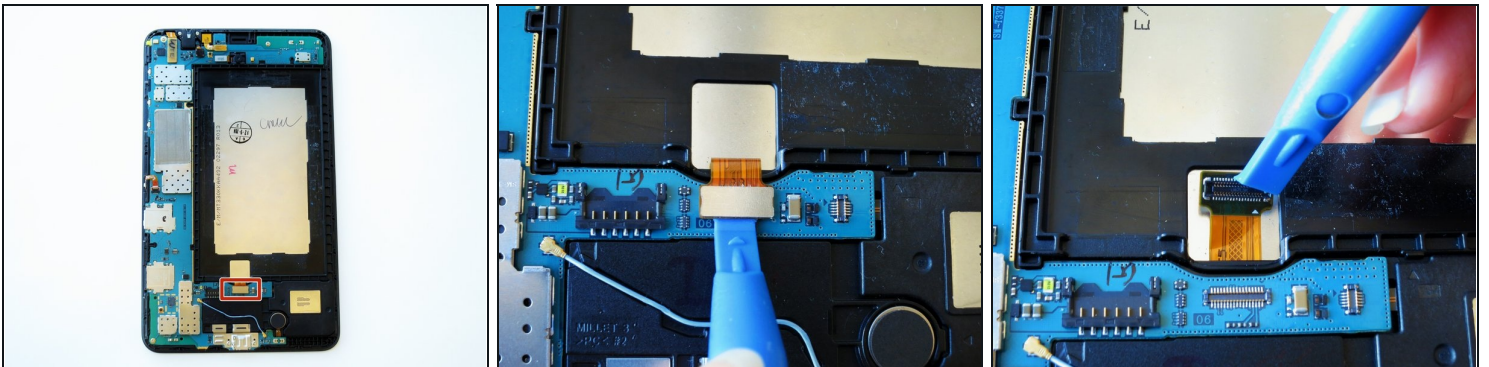
ⓘ Salvage the green tape if the replacement battery does not include one.

Step 13



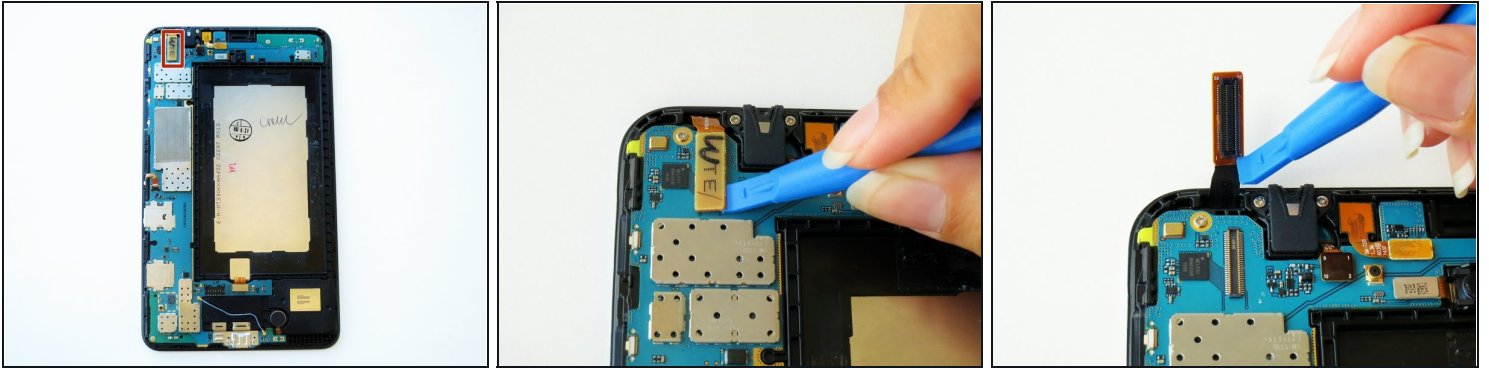
- Run the spudger under the battery to disconnect the red and blue cable connector from the circuit.
- Lift the battery towards you, away from the front panel.

Step 14 — Motherboard



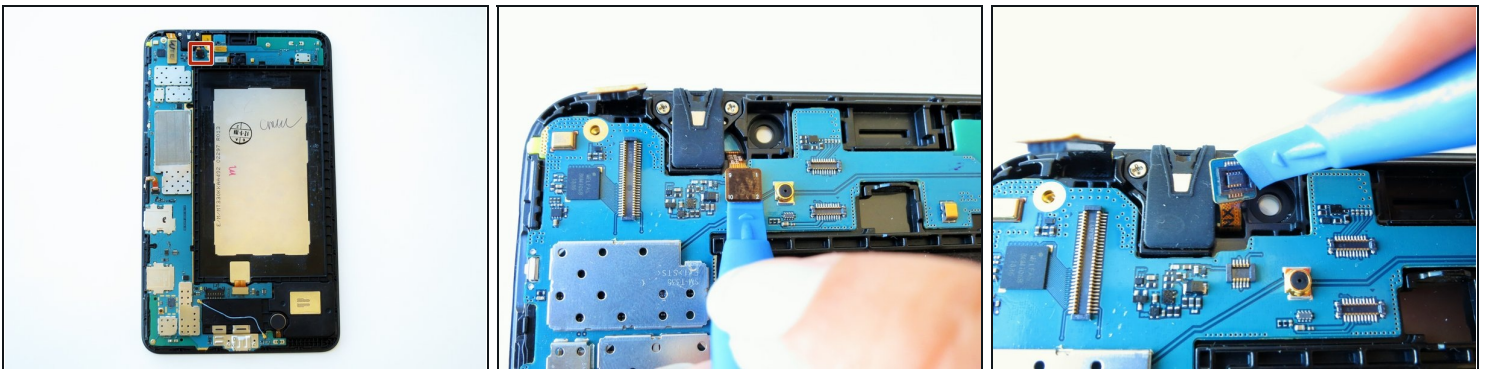
- Slightly apply pressure and move the blue plastic opening tool downwards to pop the metallic rectangular connector from its socket on the mother board.

Step 15



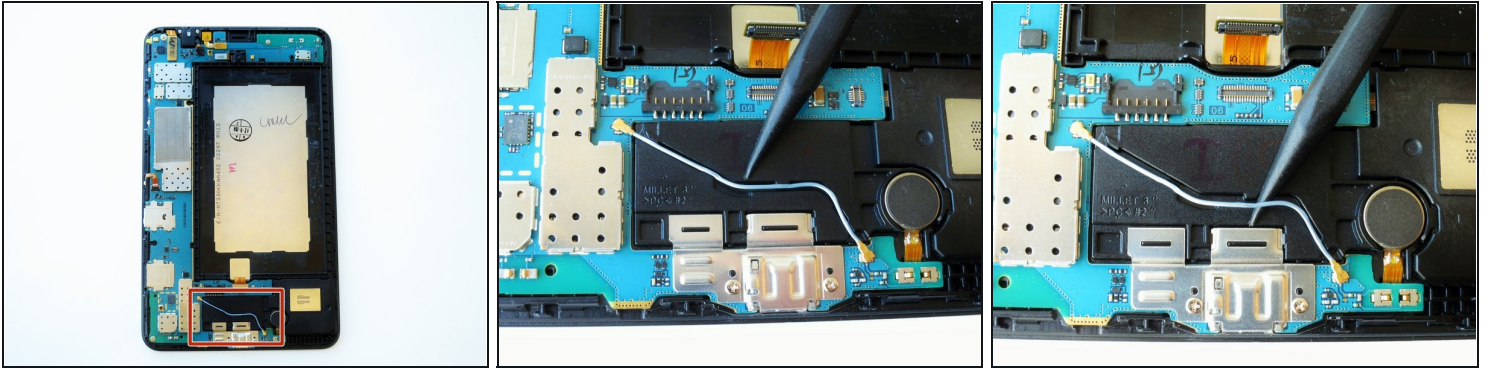
- Slightly apply pressure and move the blue plastic opening tool downwards to pop the gold rectangular connector from its socket on the motherboard.

Step 16



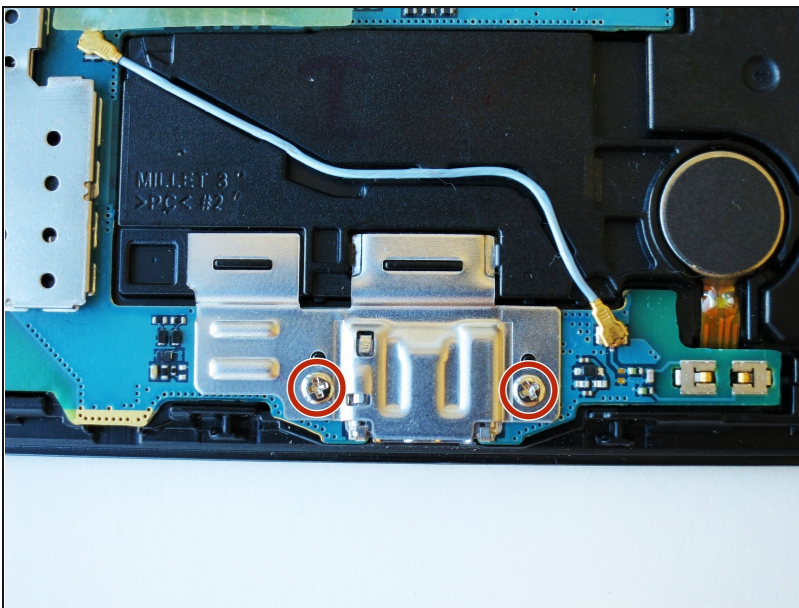
- Slightly apply pressure and move the blue plastic opening tool downwards to pop the gold square connector from its socket on the motherboard.

Step 17



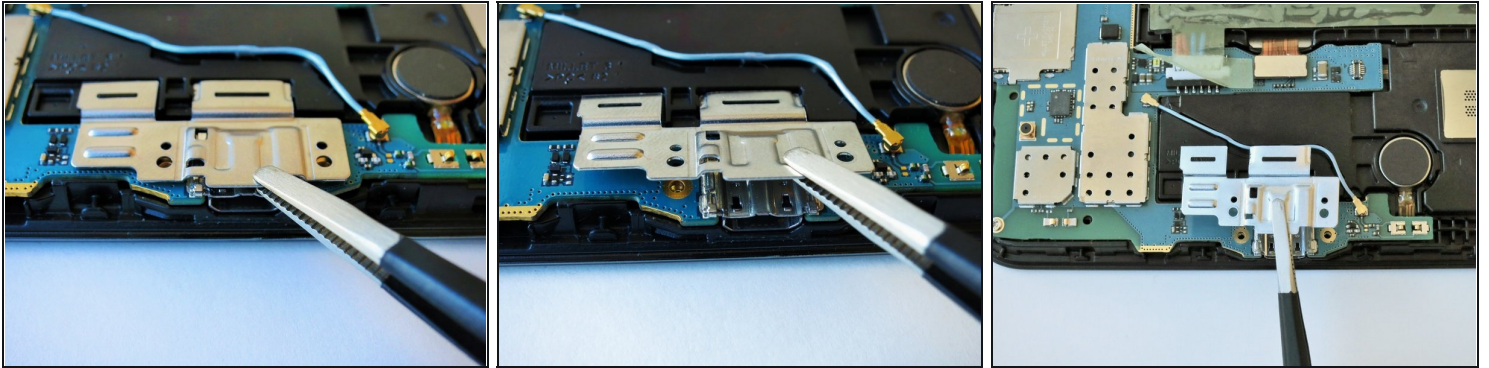
- Using the spudger gently wedge the blue wire out of its compartment.

Step 18



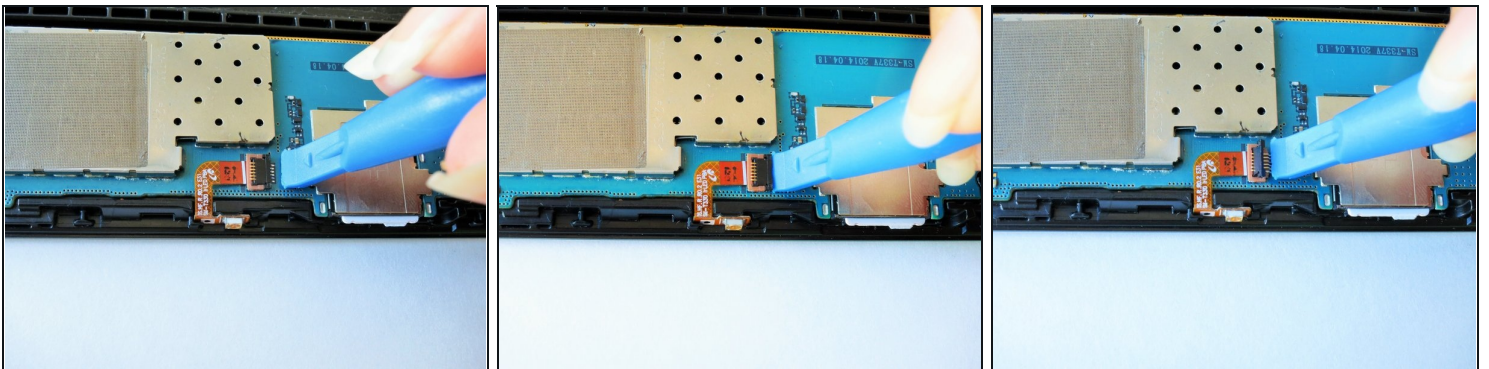
- Remove two 2 mm #000 Phillips screws securing the metallic charger port cover to both the logic board and the front panel.

Step 19



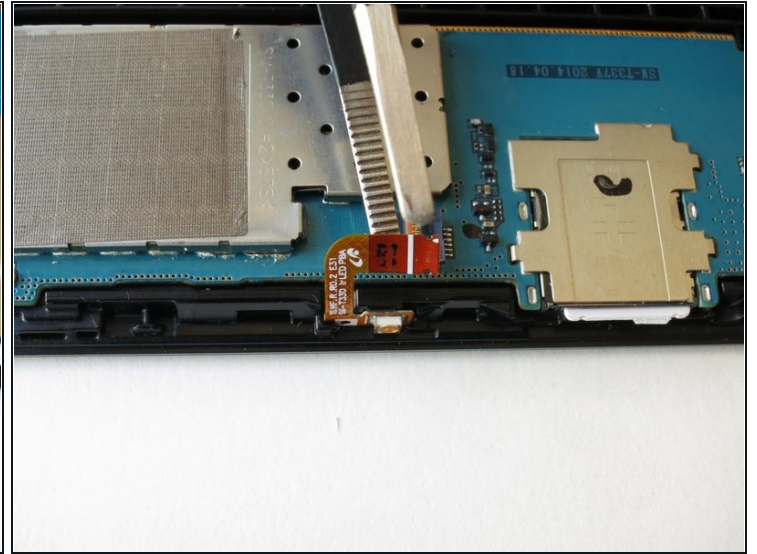
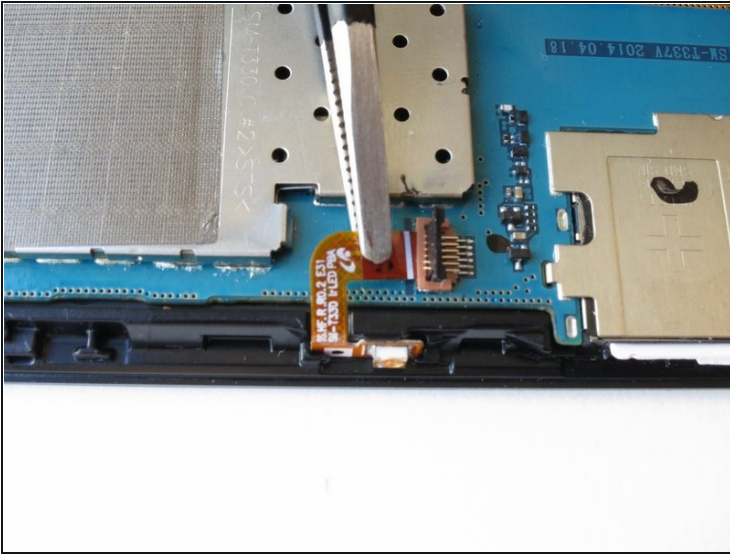
- Squeeze the metal charger port cover piece with the [tweezers](#) to gently lift it from its place.

Step 20



- Carefully insert the flat end of the blue plastic opening tool under the black plastic fastener and lift.
- ① Rotate your tablet counter clockwise to facilitate the process.

Step 21



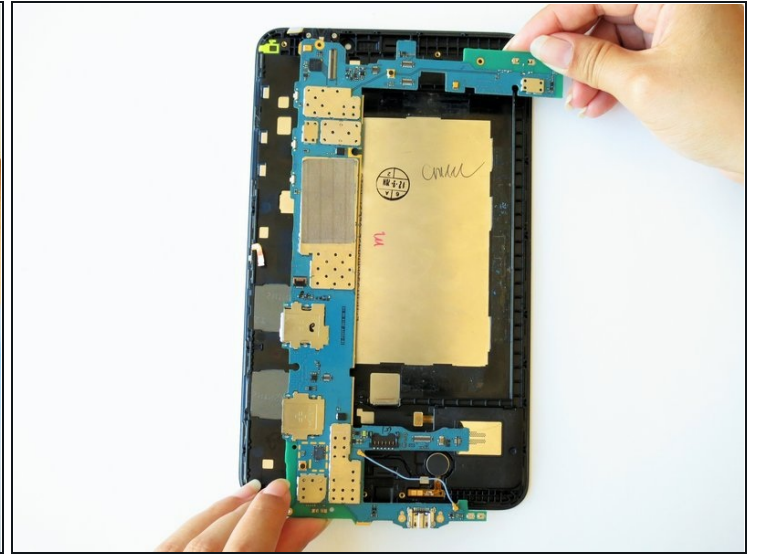
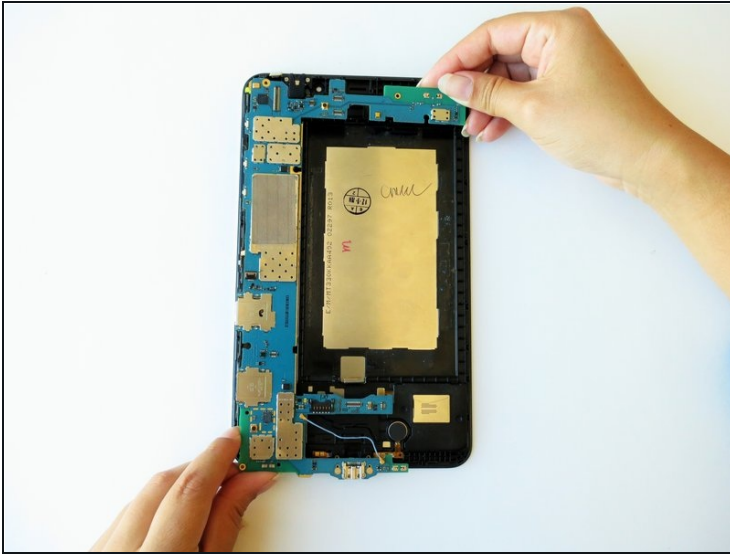
- Squeeze the golden cable with the tweezers and gently pull the cable to the left to free the end of the golden cable.
- ① The golden cable is delicate so use gentle force.

Step 22



- Remove three 2 mm #000 Phillips screws securing the mother board to the front panel.

Step 23



- Using your hands, hold the opposite ends of the mother board corners, and lift.

To reassemble your device, follow these instructions in reverse order.