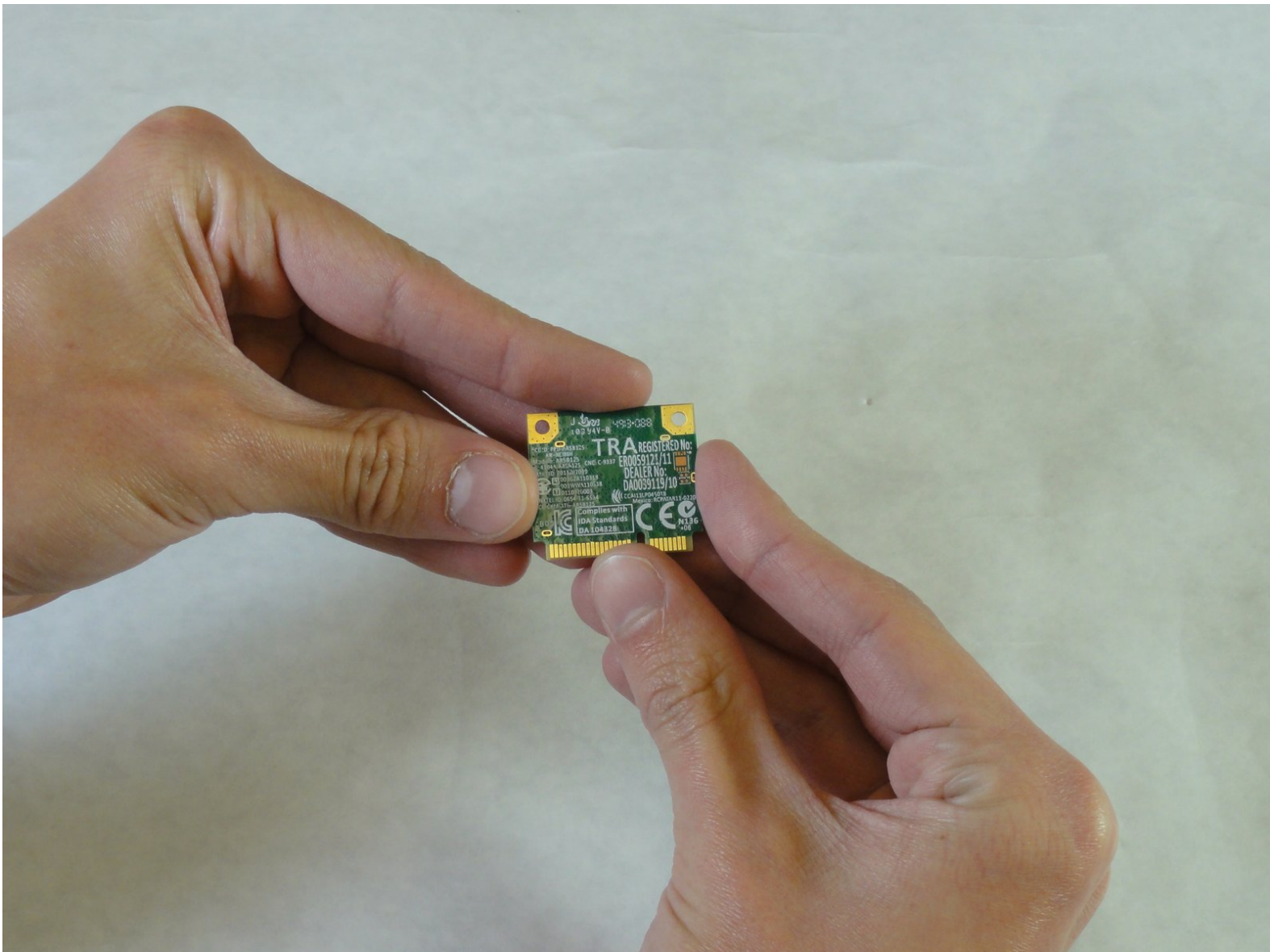




ASUS D550MA-DS01 Wireless Network Card Replacement

If your laptop is having trouble connecting to any WiFi networks and you need to replace the Network Interface Card (NIC), then this guide is for you!

Written By: Richard Johnson



INTRODUCTION

Wireless Network Interface Cards (NIC) allow your laptop to connect to WiFi networks. Over time, they may become damaged by heat or become outpaced by newer networks. Replacing the NIC is a simple procedure that can save you from scrapping your laptop!




TOOLS:

- [Phillips #1 Screwdriver](#) (1)
 - [Spudger](#) (1)
-

Step 1 — Keyboard Module




 Before you begin, be sure to turn off your laptop and unplug it from the outlet.

- Use a Philips #1 screwdriver to remove the nine screws from the back cover.

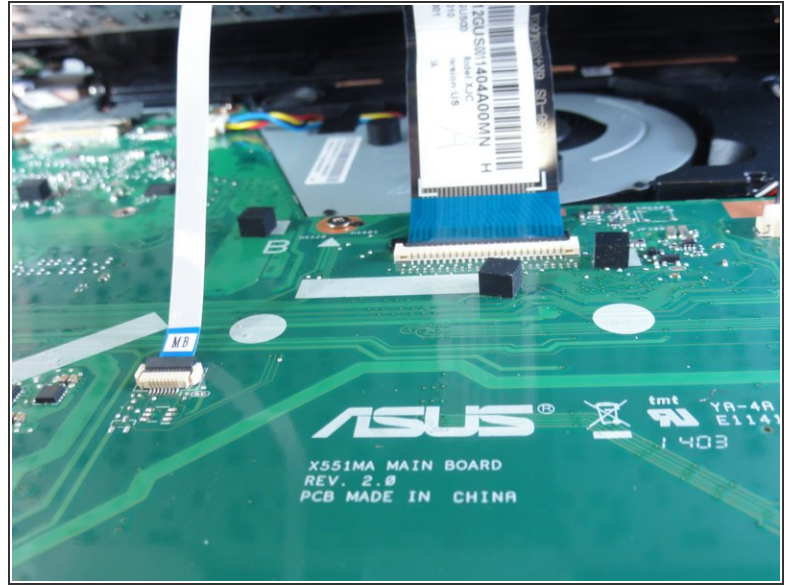
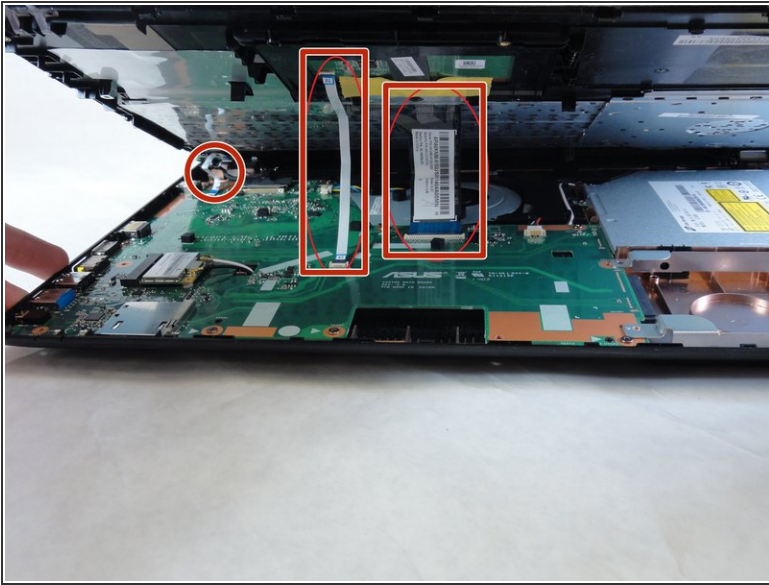
Step 2



- Turn the laptop over and open the display.
- Insert the flat edge of the spudger into the crease of the keyboard cover.
- While the spudger is in the crease, carefully pry open the casing by sliding the spudger along the edge.

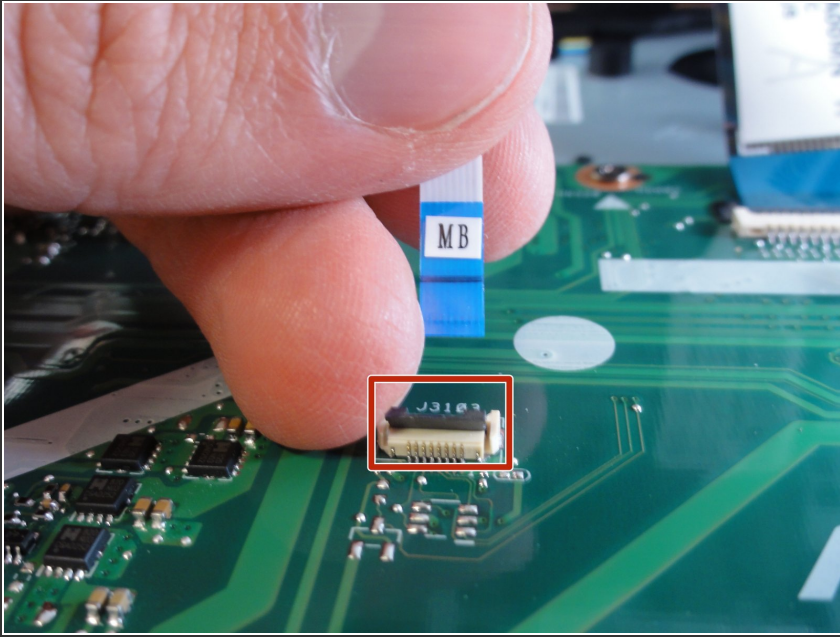
 Do not use excessive force to pry open the lid. You should hear each plastic clip snap open as you run the spudger along the edge.

Step 3



- ❗ Make sure that the entire cover has been released from the plastic clips.
- Slowly lift the cover open from the front of the laptop, but do not completely remove it.
- Note the locations of the three white and blue data cables connecting to the keyboard to the computer's main board.

Step 4



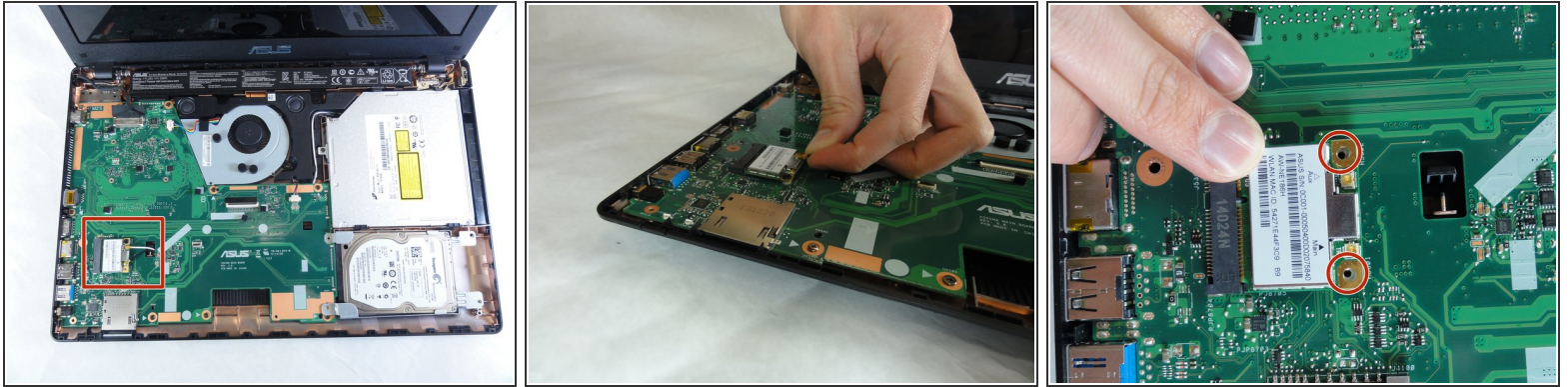
- i If you are only replacing the battery, you can skip this step and the next. Shift the keyboard module away from the display and set it such that the fragile flex cables are not strained.
- Disconnect the three data cables from the motherboard.
- i To unlock a [ZIF connector](#), use the tip of a spudger or your fingernail to flip up the small, hinged locking flap. Carefully slide the unlocked cable out of the socket.

Step 5



- Remove the fully disconnected keyboard module from the laptop.

Step 6 — Wireless Network Card



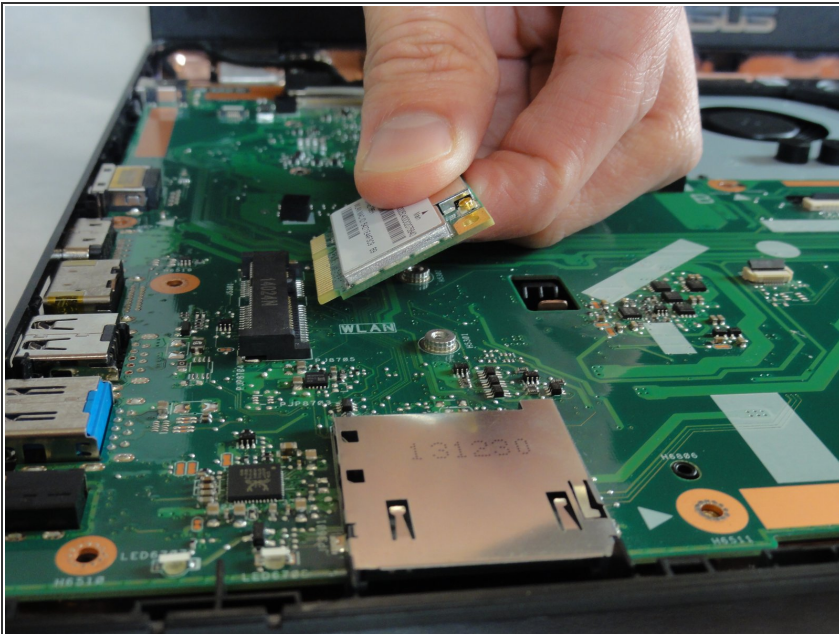
- Locate the Network Interface Card (NIC) on the motherboard.
- i* Note the orientation of the white and black wires on your NIC. The may connection differ from the picture.
- Gently disconnect the white and black wires by pulling it off of the NIC card. These wires should come off easy.
- i* If you are following these steps for the prerequisite to remove the motherboard, you do not need to completely remove the NIC. Just remove the wires. The proceeding step can be skipped.

Step 7



- Remove the screws that are holding down the wireless network card with the Phillips #1 screwdriver.
- ⓘ After removing the screws, the NIC will lift up in a spring action.

Step 8



- Gently pull out the NIC.
- ⚠ Do not use excessive force or wiggle the card out. The NIC should slide out easily.

To reassemble your device, follow these instructions in reverse order.