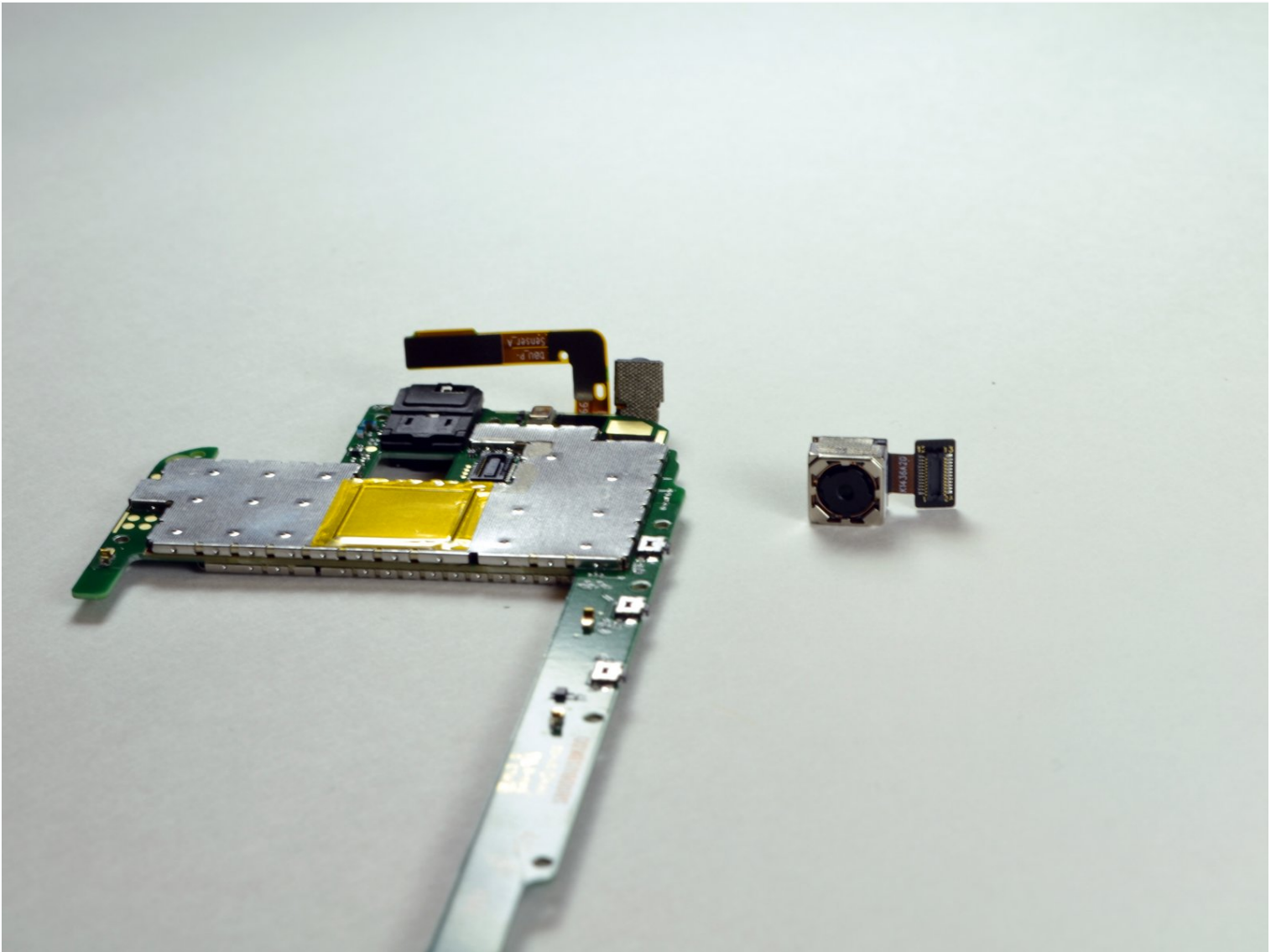




Motorola Moto G 2nd Generation Rear Camera Replacement

In this guide, you will learn to replace the...

Written By: stanley roskey



INTRODUCTION

In this guide, you will learn to replace the rear facing camera in your Moto G, in the event that it malfunctions or breaks. While the part itself is very easy to disconnect from the phone, getting to it requires you to remove the motherboard, which may take a while. Luckily, all you will need to complete this repair is a Torx T5 screwdriver and a plastic opening tool.

Before you begin, download the [Rescue and Smart Assistant](#) app to backup your device and diagnose whether your problem is software or hardware related.

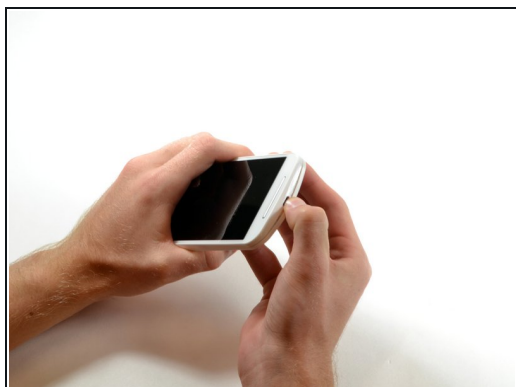
TOOLS:


[T5 Torx Screwdriver](#) (1)

[iFixit Opening Tool](#) (1)

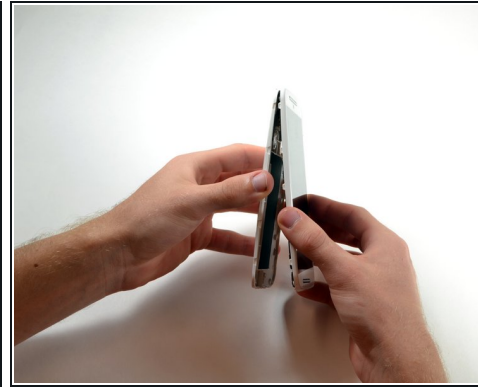
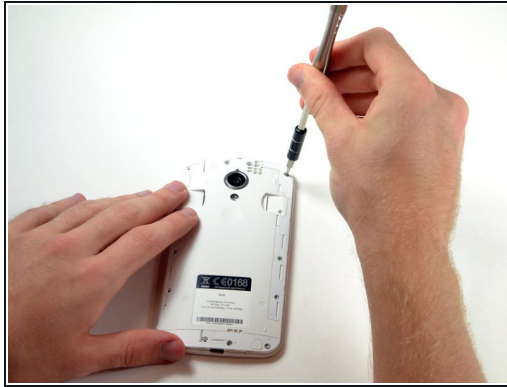
[Tweezers](#) (1)

Step 1 — Battery



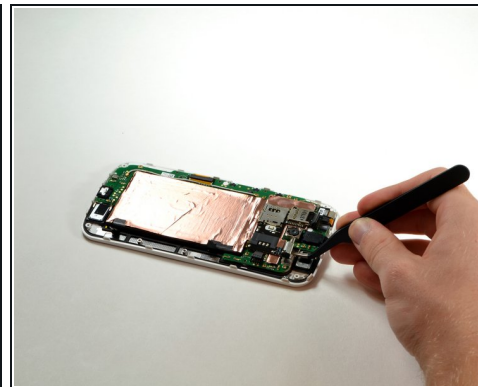
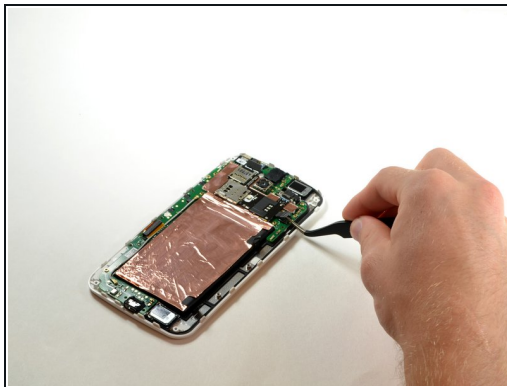
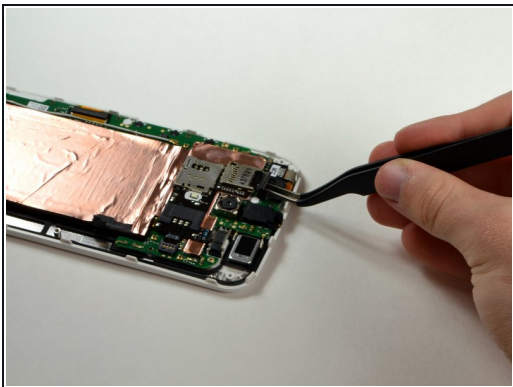
-  Make sure your Moto G is turned off and that **any SIM or SD cards are removed** before beginning disassembly.
- Starting at the USB port on the bottom, remove the rear cover by prying it off with your finger.
- Work your way down the sides to avoid cracking the rear cover.

Step 2



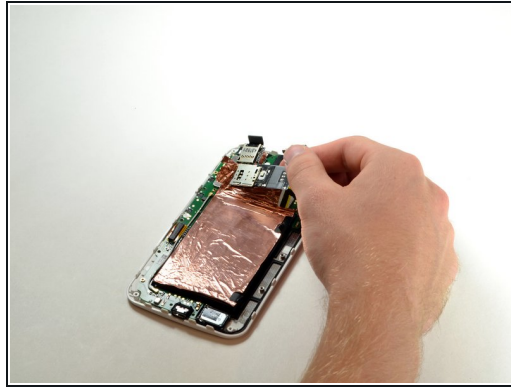
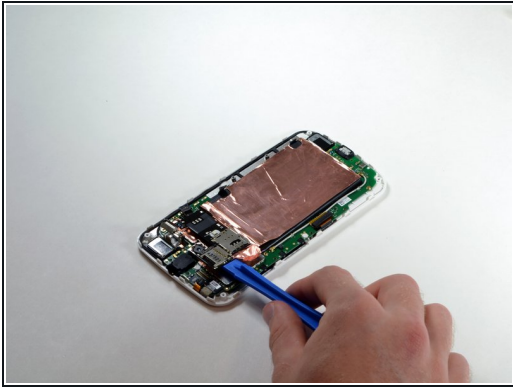
- Remove the eight 4.2 mm screws at the top and bottom of the phone using a T5 Torx screwdriver.
- Using the same screwdriver, remove the six 3.2 mm screws on the sides.
- Remove the next layer of the phone by prying it off with your fingers.

Step 3



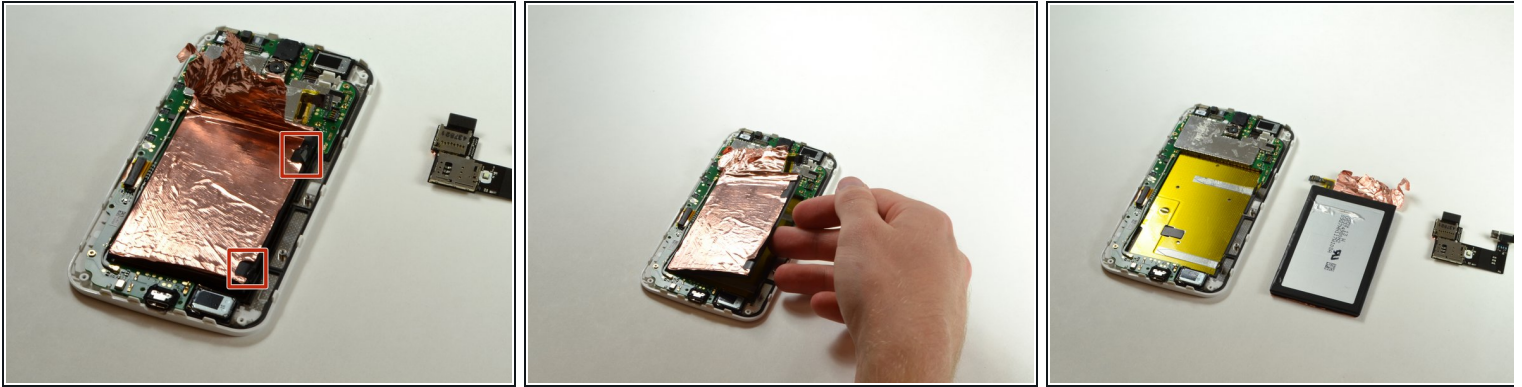
- Using a plastic opening tool or tweezers, disconnect the SIM/SD card reader at the top of the phone.
- Disconnect the battery connector by prying it off of the motherboard.
- Disconnect the vibration motor by prying its connector off of the motherboard.

Step 4



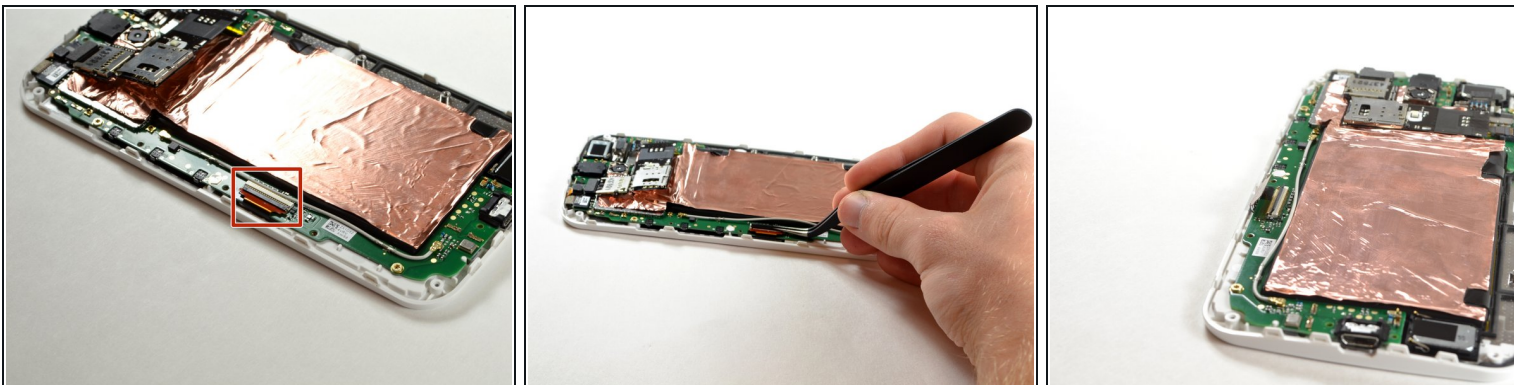
- Using a plastic opening tool, carefully pry off the entire SIM/SD card reader component.
- ⓘ Don't worry about ripping the copper foil a little bit, it is easy to put back on.
- ⚠ When reassembling the device, do not attempt to smooth the foil down with your finger. Metal foil can become sharp if folded in a certain way, and you may be cut.
- ⓘ The battery may be removed without removing the SIM/SD card reader. Simply peel back the copper foil from the opposite end of the device, stopping just before you reach the SIM/SD card reader.

Step 5



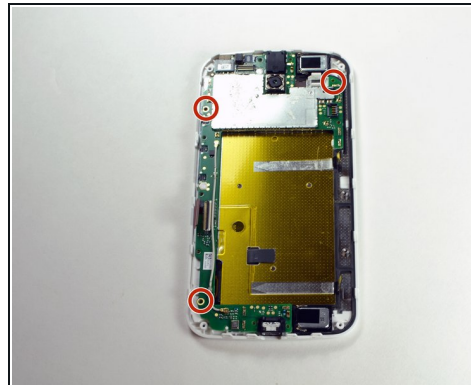
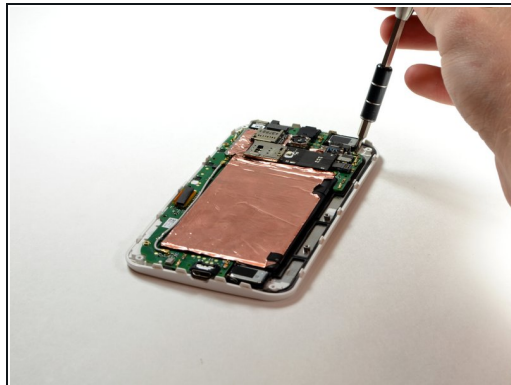
- Peel off the two black stickers on the right side of the battery using your fingers.
- Remove the battery by pulling the right side of it upwards.
- ⓘ The black stickers are the protruding ends of the two parallel adhesive strips which hold the battery in place. You can see the adhesive strips in the third image. Focus your effort on these regions.
- ⓘ If you did not remove the SIM/SD card reader in the previous step, you will need to carefully slide the battery ribbon cable out from under it once you have freed the battery from the adhesive strips.

Step 6 — Motherboard



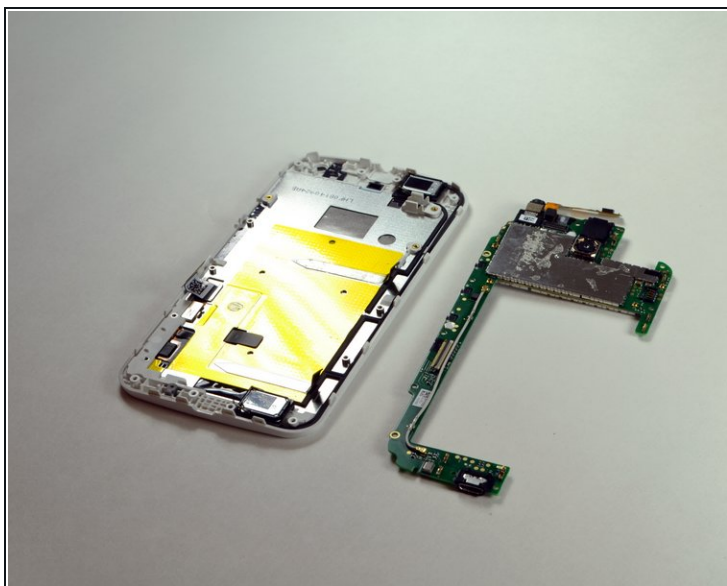
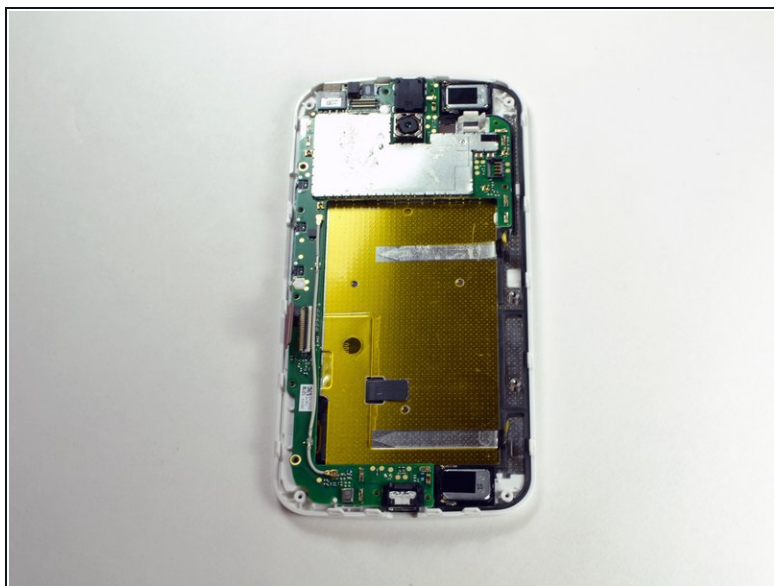
- Remove LCD connector by lifting the black plastic flap.

Step 7



- Using a T5 Torx screwdriver, unscrew the three 2.2 mm screws holding the motherboard in place.

Step 8



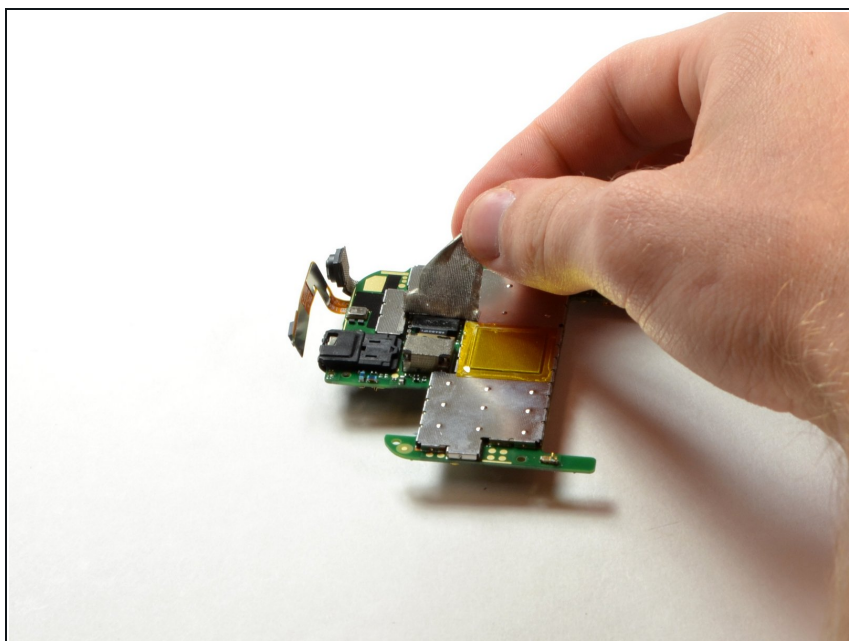
- Carefully remove the motherboard.

Step 9 — Rear Camera



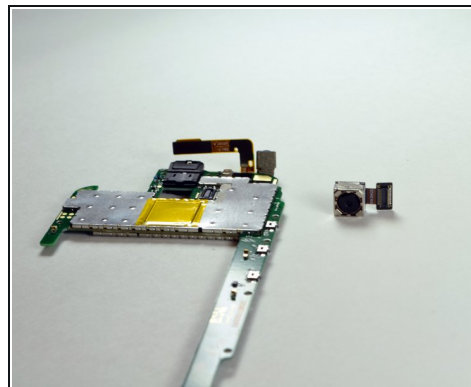
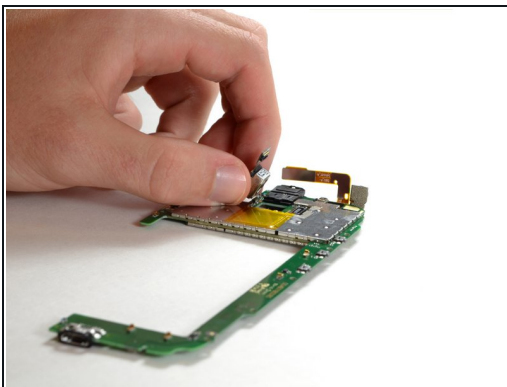
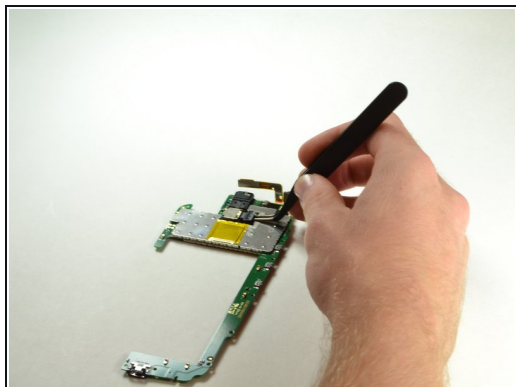
- The location of the rear facing camera can be seen here.

Step 10



- Flip over the motherboard.
- Remove the tape that is covering the rear camera using your fingers.

Step 11



- Use the prying tweezers to remove the rear facing camera connector on its right side.

To reassemble your device, follow these instructions in reverse order.