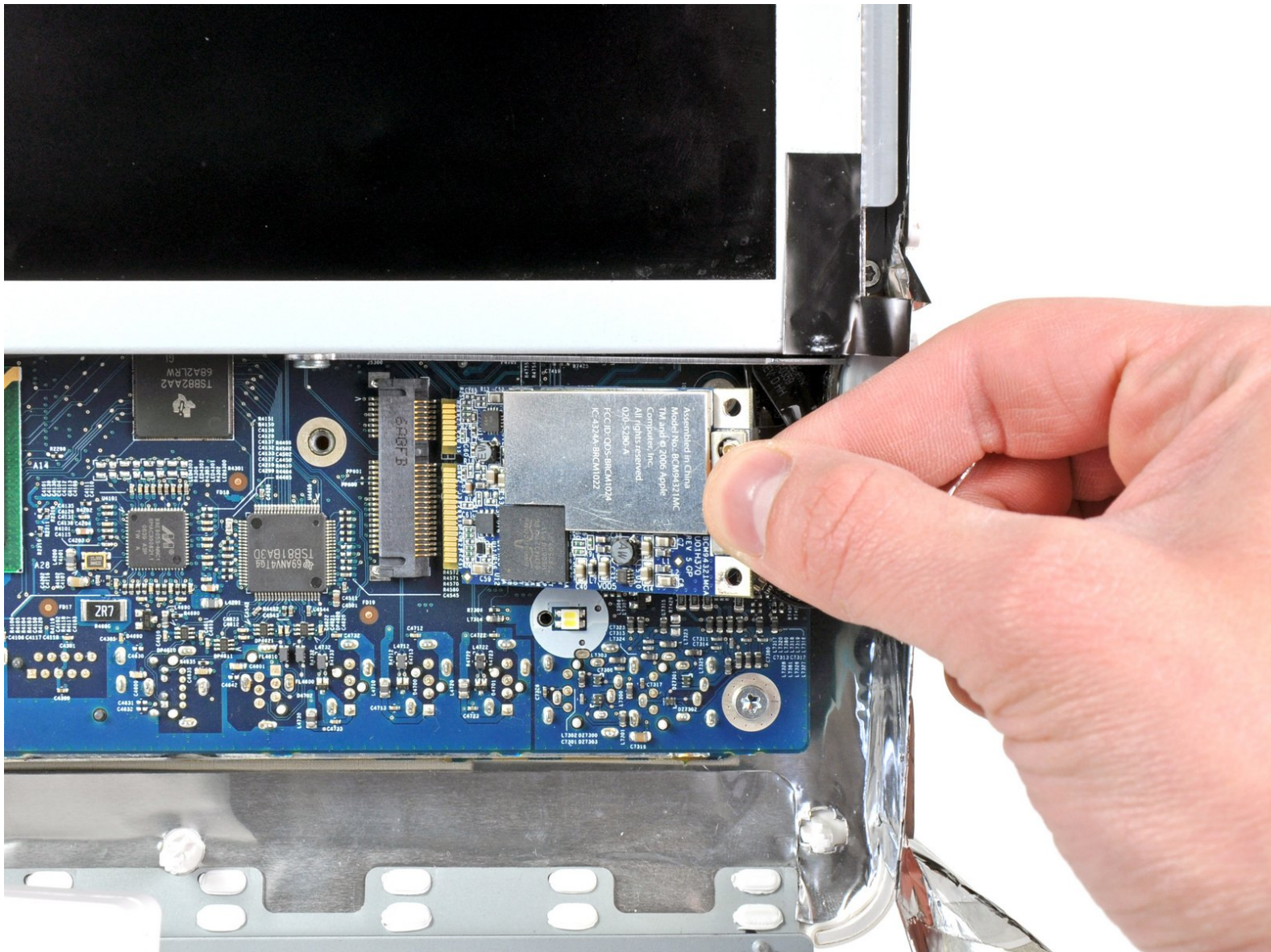




iMac Intel 24" EMC 2111 AirPort Board Replacement

Replace a broken AirPort board on your iMac Intel 24" EMC 2111.

Written By: Andrew Bookholt



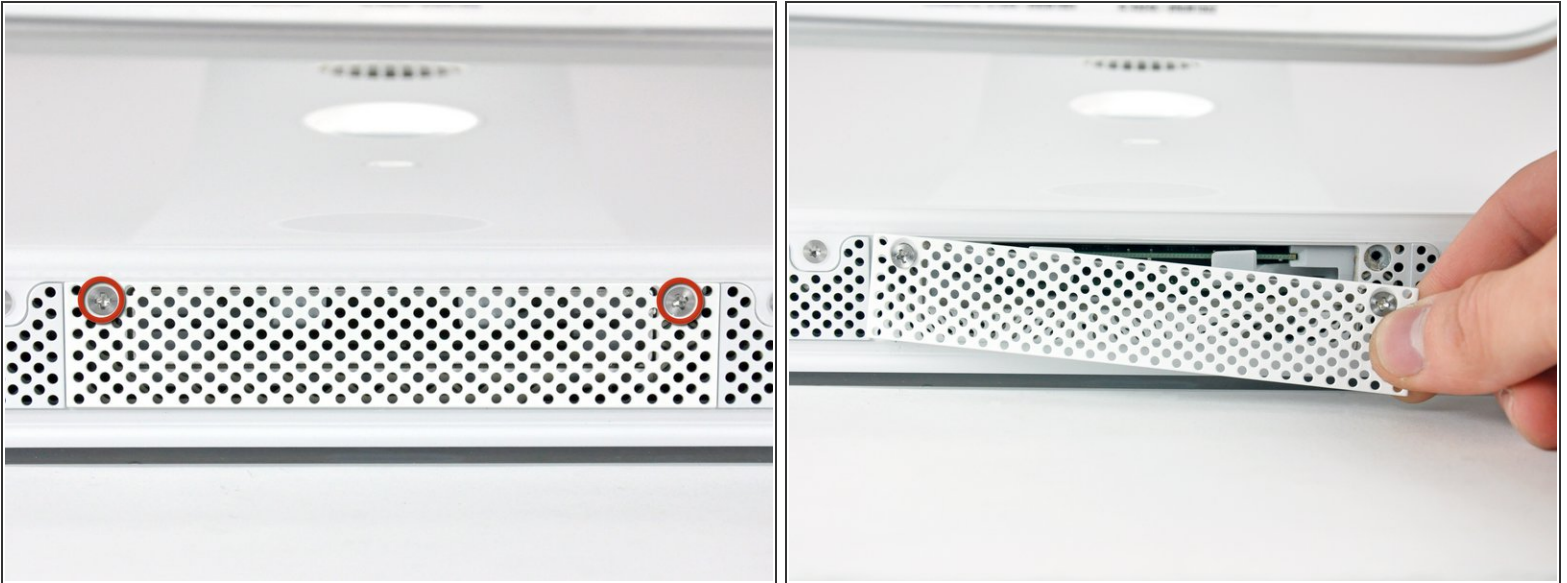
INTRODUCTION

Use this guide to replace a broken AirPort board.

TOOLS:

- [Phillips #1 Screwdriver](#) (1)
 - [Spudger](#) (1)
 - [T10 Torx Screwdriver](#) (1)
 - [T6 Torx Screwdriver](#) (1)
 - [T8 Torx Screwdriver](#) (1)
-

Step 1 — Access Door



- Loosen the two Phillips screws securing the access door to your iMac.
- ⓘ Both screws remain captive within the access door.
- Remove the access door.

Step 2 — Front Bezel



- Remove the following screws along the lower edge of your iMac:
 - Three 6 mm T8 Torx screws
 - One 8 mm T8 Torx screw

Step 3



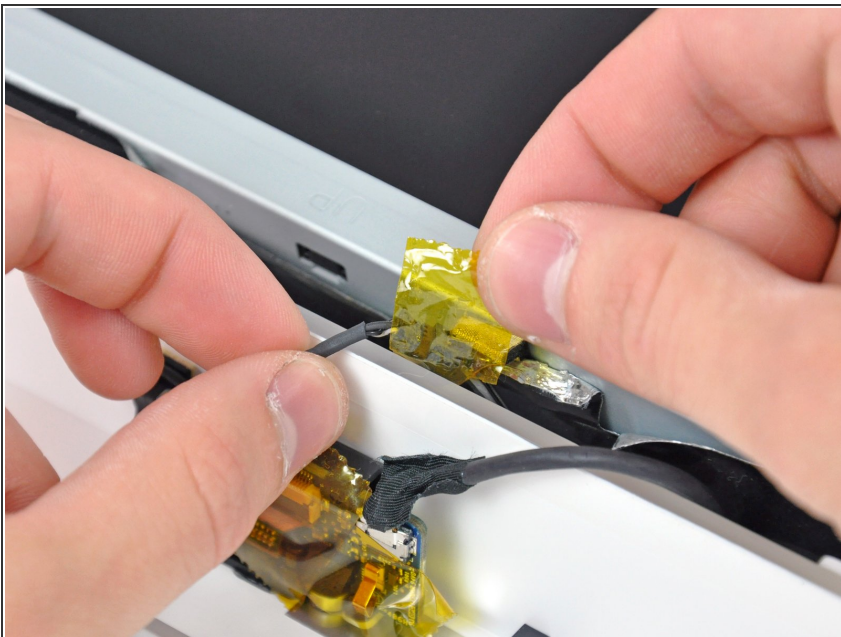
- ① Lay your iMac stand-side down on a flat surface.
- To lift the front bezel off the iMac, simultaneously:
 - Use your thumbs to press in the RAM arms and hold the iMac down.
 - Use your index fingers to pull the small bridge of material on the front bezel toward yourself.
 - Pull the front bezel up with your index fingers.
- Once the small bridge of material has cleared the RAM arms, lift the front bezel by its lower edge just enough to clear the bottom edge of the rear case.

Step 4



- Lift the front bezel off the rear case and rotate it away from the bottom edge of the iMac, minding the camera and microphone cables still attached to its upper edge.
- ⓘ The third picture shows the top front bezel brackets and their slots cut into the top edge of the iMac's rear case.
- ⚠ Do not completely remove the front bezel, as it is still attached by the camera/microphone cables.

Step 5




- ⓘ If necessary, remove the strip of tape covering the microphone cable connector.
- ★ The microphone connector is located near the inside of top edge of your iMac.

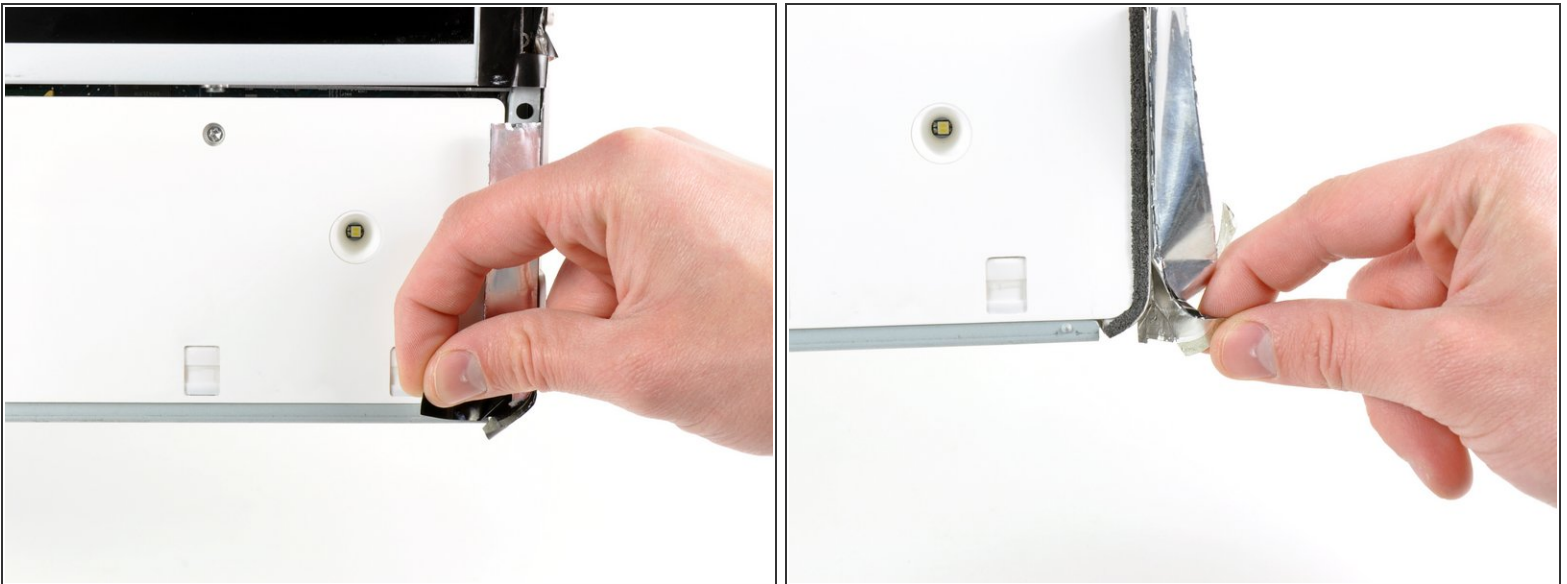
Step 6



- Disconnect the microphone cable.
- Disconnect the camera cable by pulling its connector away from the socket on the camera board.

 The camera cable connector and socket are delicate and easily bent. Remove with caution.

Step 7 — AirPort Board



- Peel back the piece of EMI tape connecting the bottom edge of the right speaker to the metal frame of the iMac.
- Peel the tape away from the lower corner of the right speaker.

Step 8



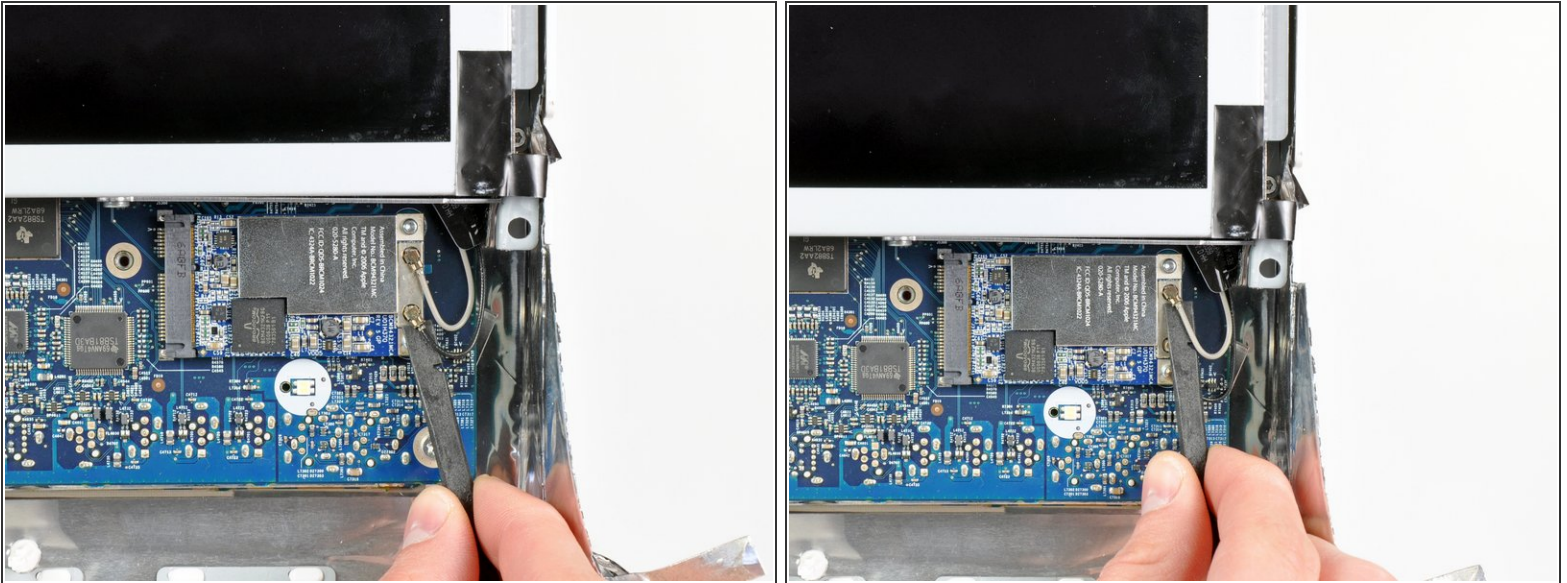
- Remove the 26 mm T10 Torx screw securing the right speaker to the iMac.

Step 9



- Pull the right speaker away from the logic board and let it hang down from the iMac.

Step 10



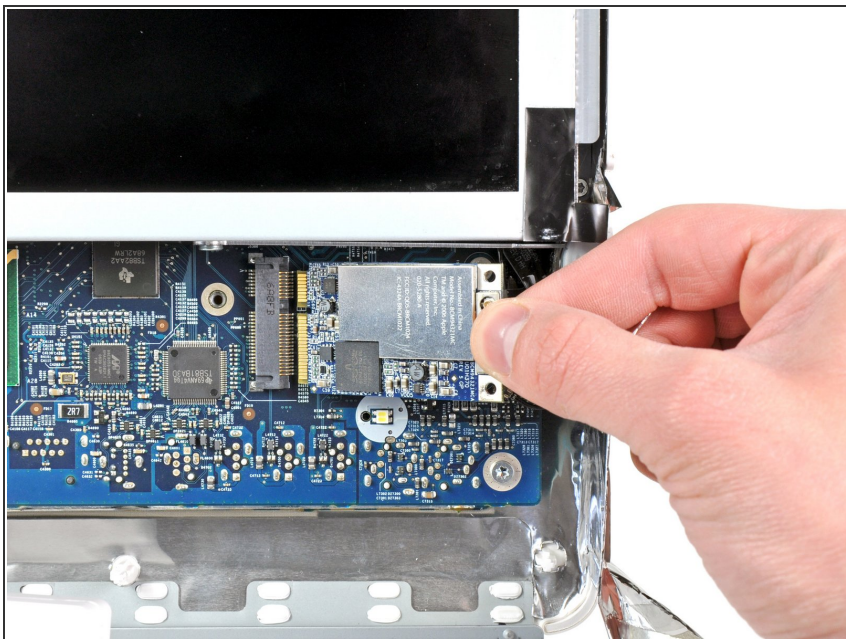
- Use the flat end of a spudger to pry both antenna connectors off their sockets on the AirPort board.
- ⓘ The black antenna connects nearest the bottom edge of the iMac.

Step 11



- Remove the two 5 mm T6 Torx screws securing the AirPort board to the logic board.
- ⓘ The AirPort board should lift away from the logic board slightly once the screws are removed.

Step 12



- Pull the AirPort board out of its socket and remove it from the iMac.

To reassemble your device, follow these instructions in reverse order.