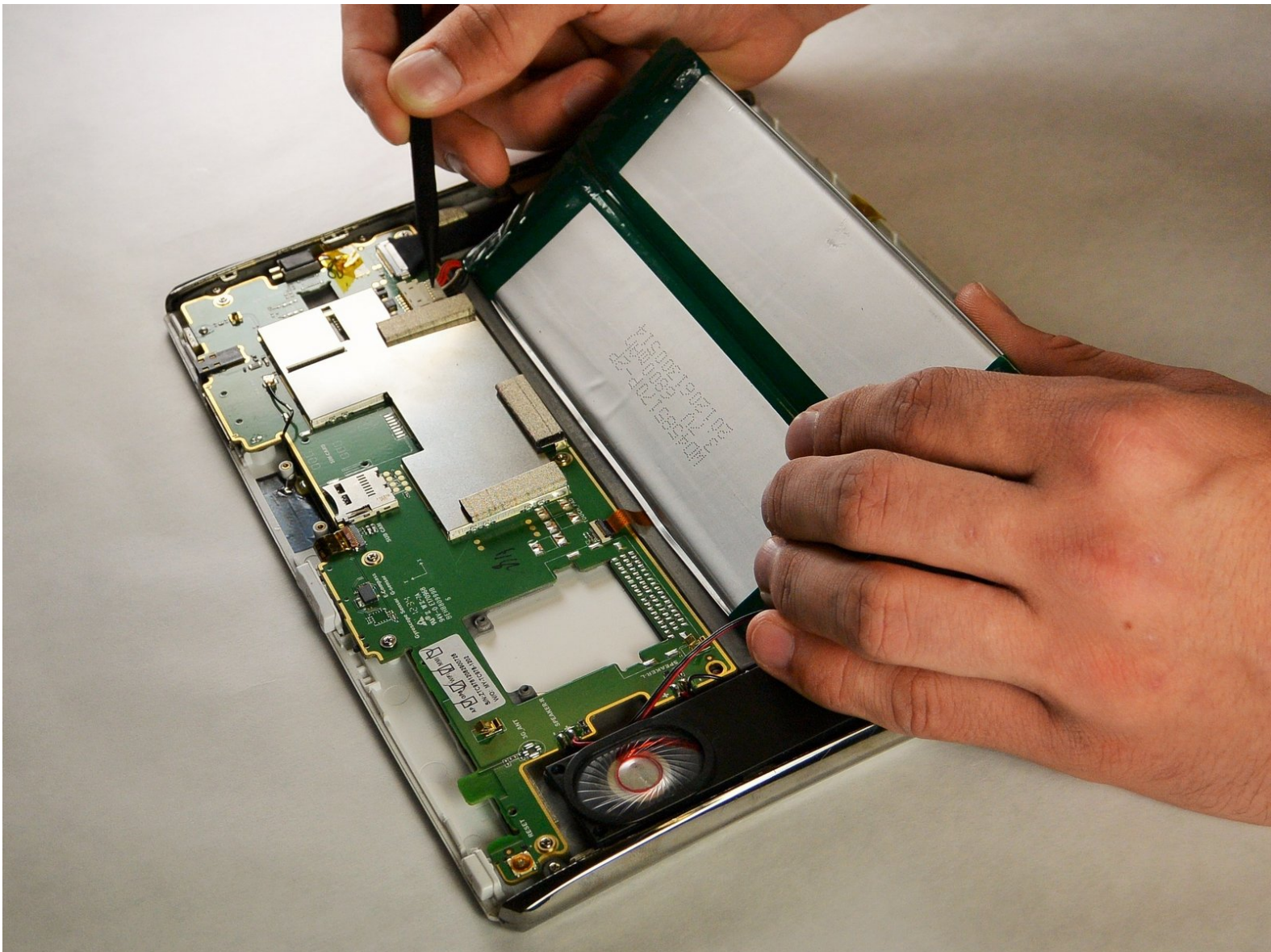




Le Pan S Battery Replacement

Use this guide to restore the power to your device by replacing your battery.

Written By: Maria Dole



INTRODUCTION

If the battery is too low for the device to turn on, replacing the battery may be necessary. If the device does not turn on after charging, the battery is most likely completely dead. When a battery is completely discharged, it oftentimes cannot be recharged. In this case, the battery is dead and needs to be replaced. No special skills or tools will be needed in order to complete this guide.



TOOLS:

- [iFixit Opening Tools](#) (1)
 - [Phillips #00 Screwdriver](#) (1)
 - [Spudger](#) (1)
-

Step 1 — Battery



- Remove the two 3.5 mm Phillips #00 screws that are covered by the micro SD port.
- ⓘ This cover is adjacent to the volume button on the side of the Le Pan S.

Step 2



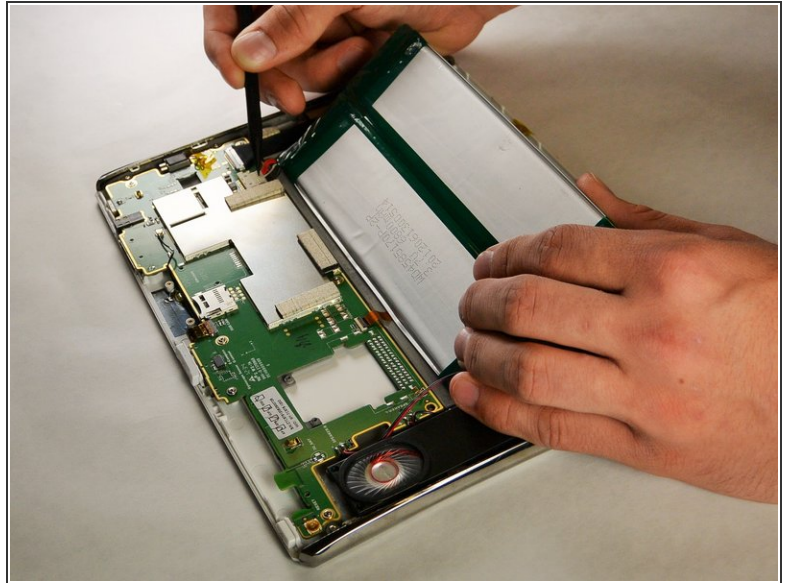
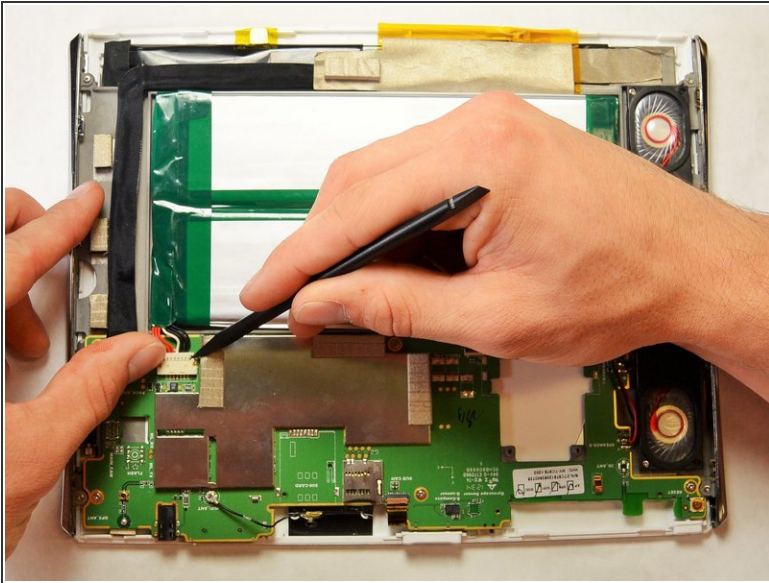
- Insert the spudger between the front and back panel in order to pry them apart.
- ⓘ Do this beside the volume button and the micro SD cover.
- Pry open the rest of the Le Pan S by dragging the spudger across the side.

Step 3



- Once the front and back faces are completely separated, remove the back cover to reveal the inside components.

Step 4



- Disconnect the battery from the circuitry and lay it out of the way.
- ⓘ The best method to complete this is to pull the bundled cable connector out with your hands. Pull towards the wires and away from the electrical board. Use the spudger to further coax the cable out.
- ✦ If you are replacing your battery, make sure to dispose of it properly.

To reassemble your device, follow these instructions in reverse order.