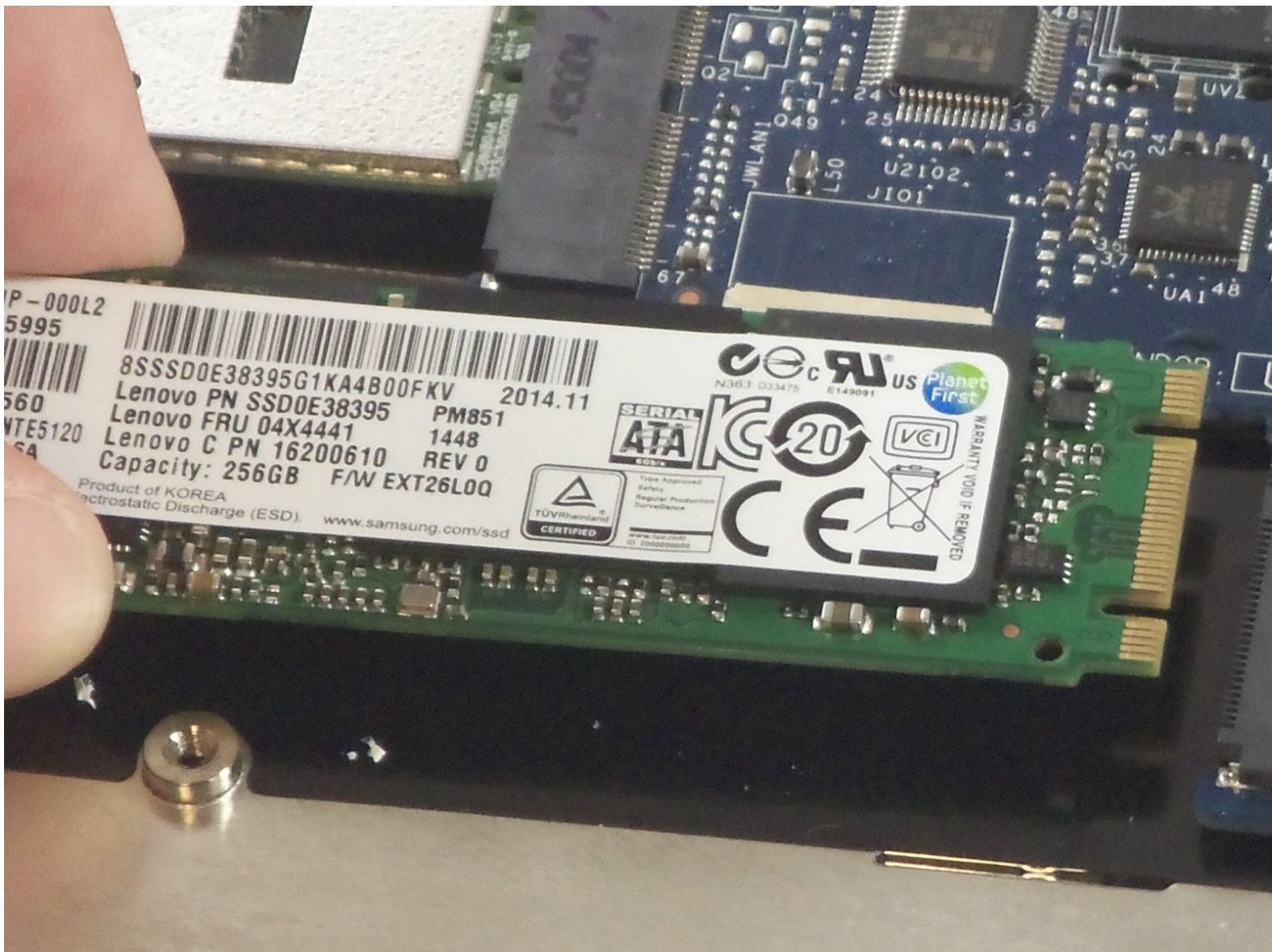




Lenovo Yoga 3 11 SSD Replacement

Replace the SSD in your Lenovo Yoga 3 11.

Written By: Geoff Wacker



INTRODUCTION

Use this guide to replace the SSD in your Lenovo Yoga 3 11.



TOOLS:

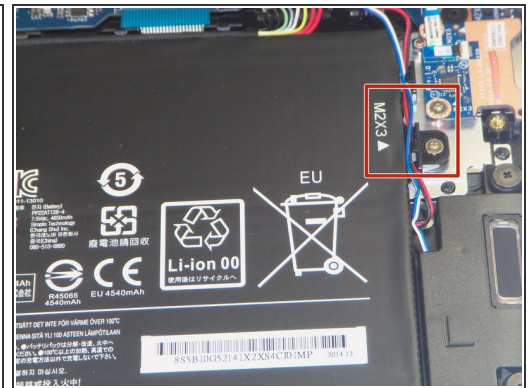
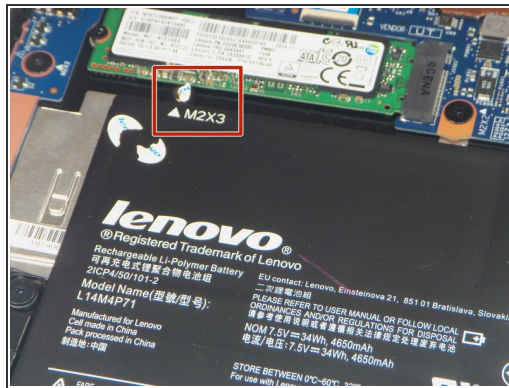
- [Phillips #00 Screwdriver](#) (1)
 - [T5 Torx Screwdriver](#) (1)
 - [Tweezers](#) (1)
 - [iFixit Opening Tools](#) (1)
-

Step 1 — Lower Case



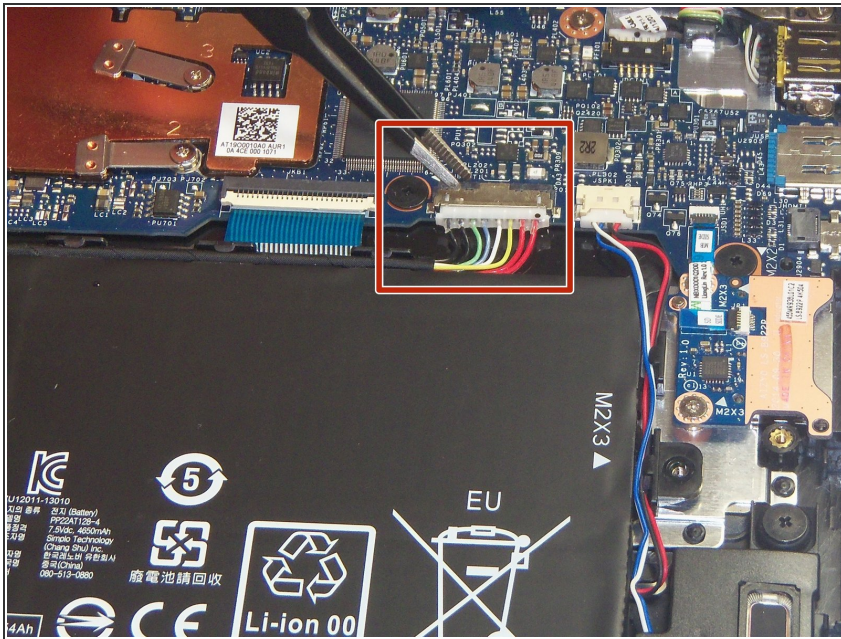
- Remove the eleven 6 mm T5 Torx screws securing the lower case.
- Gently lift the lower case up and away from the device.

Step 2 — Battery



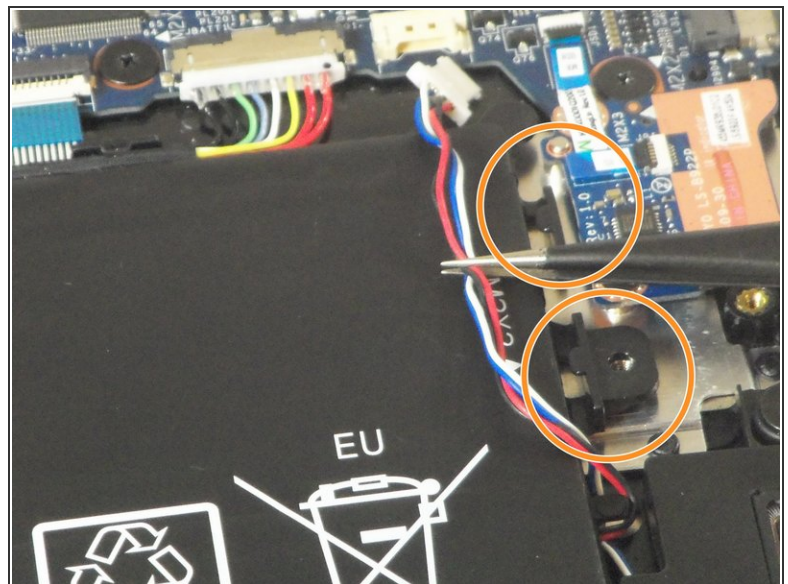
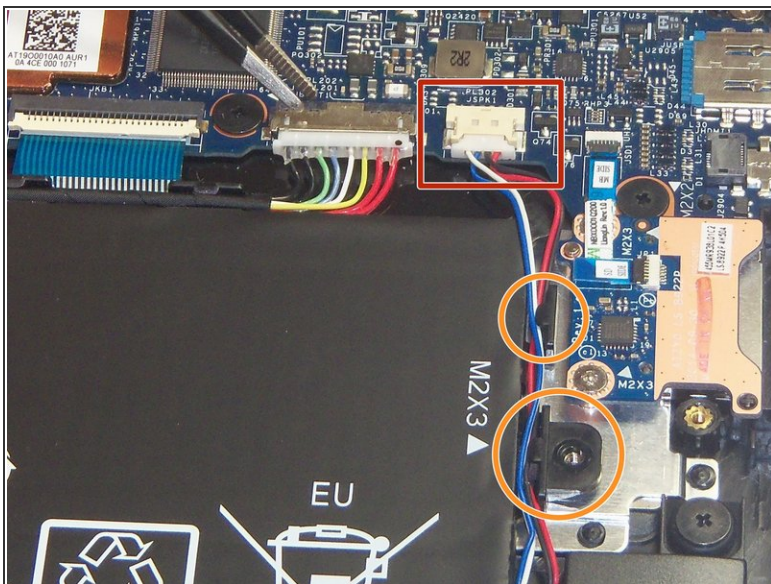
- Remove the two 3 mm Phillips #00 screws securing the battery.
- i** There are arrows on the battery indicating the location of the screws.

Step 3



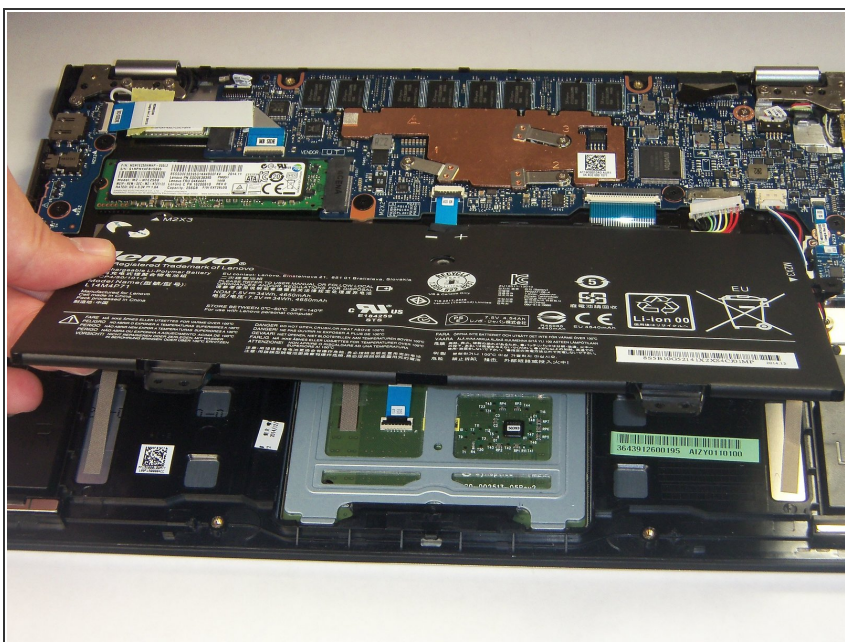
- Use a pair of tweezers to gently disconnect the battery connector.

Step 4



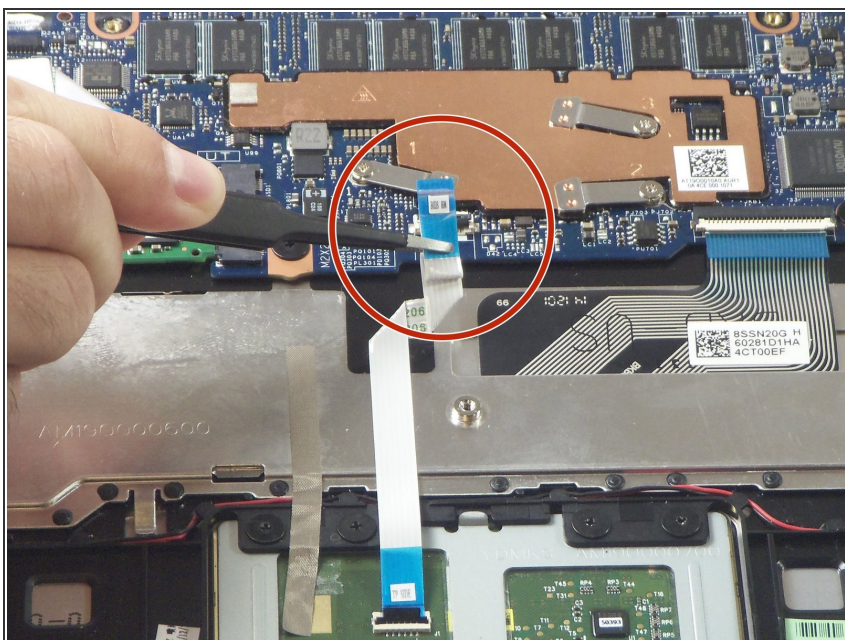
- Use a pair of tweezers to gently disconnect the speaker cable.
- Remove the wires from underneath the battery tabs using the tweezers.

Step 5



- Carefully remove the battery from the device.

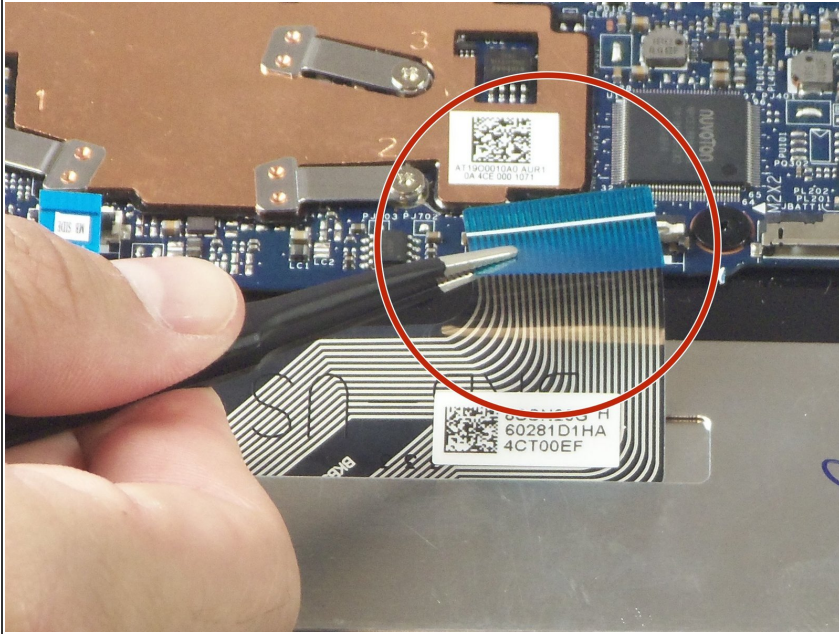
Step 6 — SSD



- Use a pair of tweezers to disconnect the motherboard-size of the trackpad ribbon cable. Gently lift up

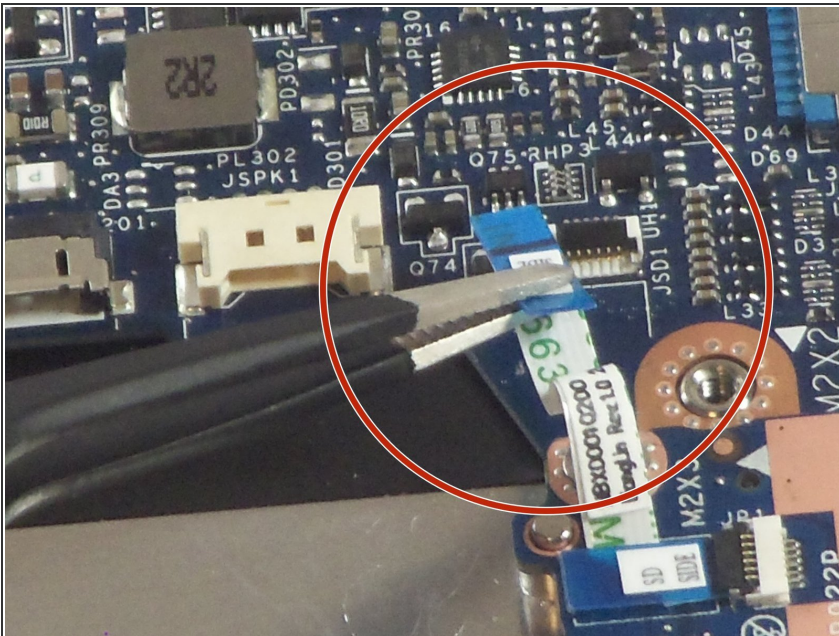
the black tab, and the cable should come free from the ZIF connector.

Step 7



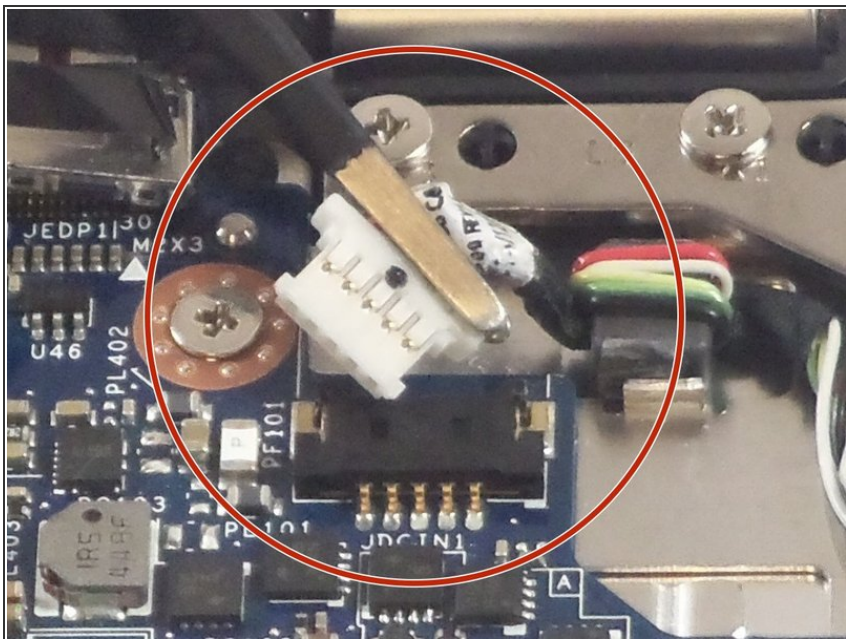
- Use a pair of tweezers to disconnect the keyboard ribbon cable from the motherboard ZIF connector. Gently lift up the white tab, and the cable should come free.

Step 8



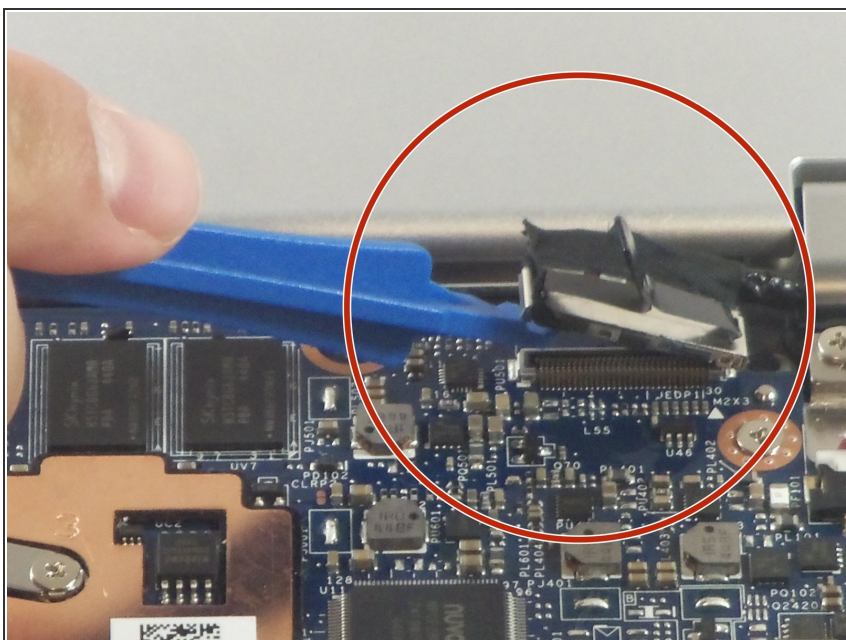
- Use a pair of tweezers to disconnect the motherboard-side of the SD board ribbon cable. Gently lift up the black tab, and then ribbon cable should come free from the ZIF connector.

Step 9



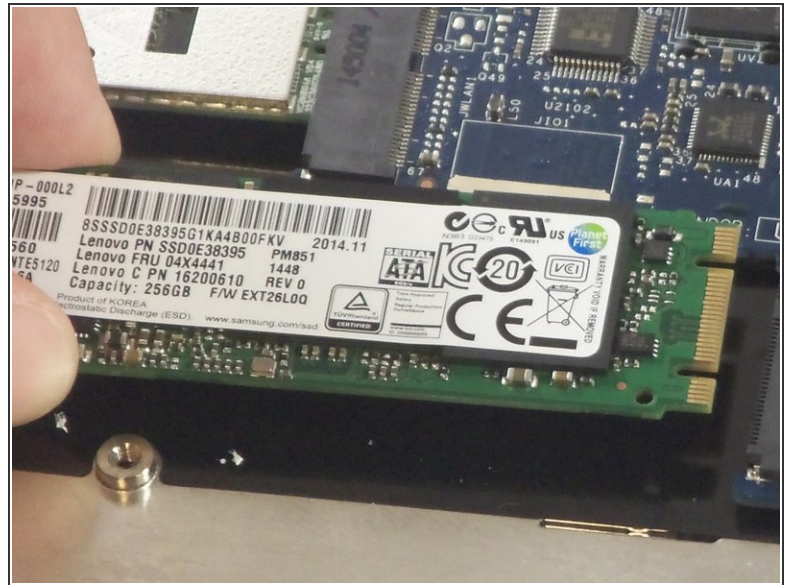
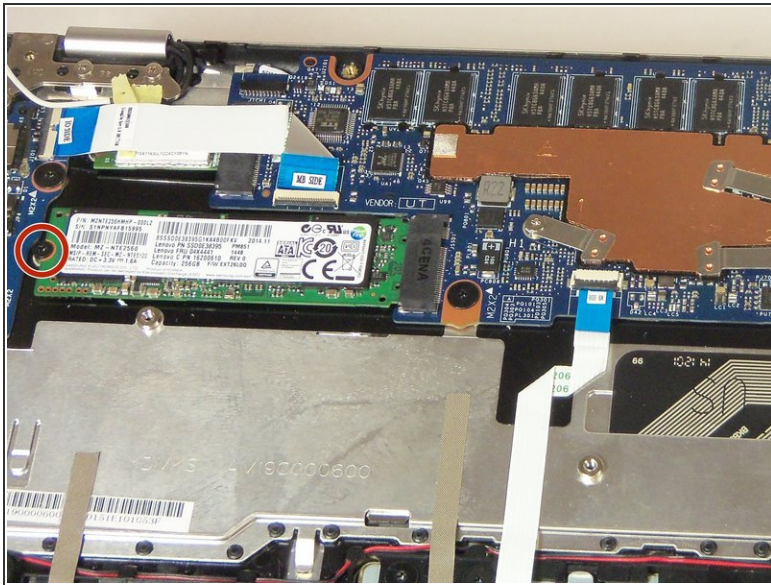
- Use the tweezers to unplug the USB port from the motherboard by gently lifting the white connector up from the black motherboard connector.

Step 10



- Use a plastic opening tool to gently pry up the screen cable from the motherboard.

Step 11



- Remove the single 2 mm Phillips #00 screw securing the SSD.
- Gently lift the SSD up and out of the device.

To reassemble your device, follow these instructions in reverse order.