



# Samsung Galaxy Note5 Battery Replacement

Remove and replace the battery in the Samsung Galaxy Note5.

Written By: Arthur Shi



## INTRODUCTION

Follow this guide to remove and replace the battery in your Samsung Galaxy Note5.

**Before disassembling your phone, discharge the battery below 25% .** A charged lithium-ion battery can catch fire and/or explode if accidentally punctured.

If your battery is swollen, [take appropriate precautions](#). **Do not heat your phone**. If needed, you can use a dropper or syringe to inject isopropyl alcohol (90+%) around the edges of the back cover to weaken the adhesive. Swollen batteries can be very dangerous, so wear eye protection and exercise due caution, or take it to a professional if you're not sure how to proceed.

After completing this guide, [calibrate your newly-installed battery](#).



### TOOLS:

- [SIM Card Eject Tool](#) (1)
- [iOpener](#) (1)
- [iFixit Opening Picks set of 6](#) (1)
- [Suction Handle](#) (1)
- [Phillips #00 Screwdriver](#) (1)
- [Tweezers](#) (1)
- [Spudger](#) (1)



### PARTS:

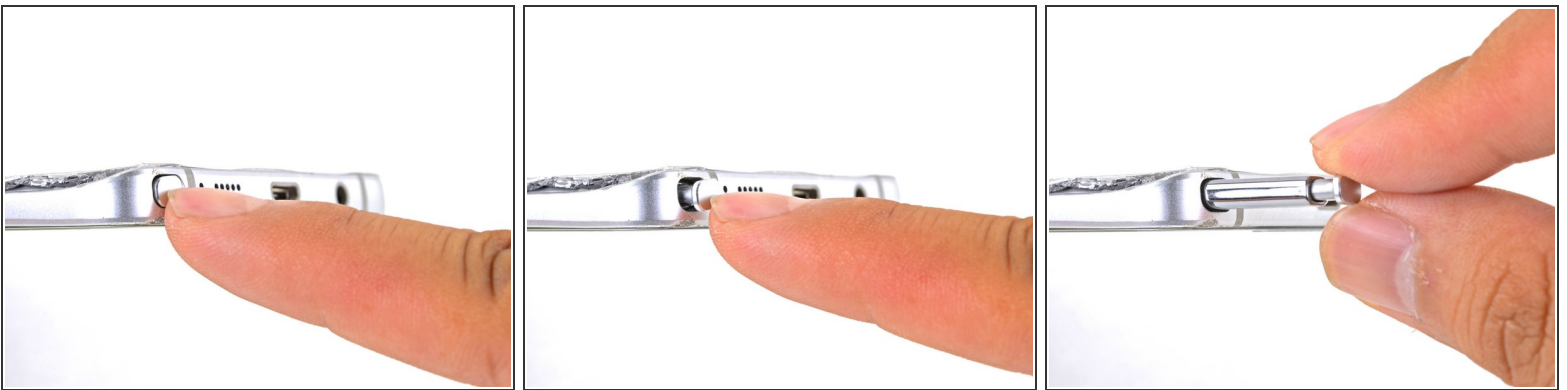
- [Galaxy Note5 Replacement Battery](#) (1)

## Step 1 — SIM Card Tray



- Insert a SIM eject tool, SIM eject bit, or a straightened paperclip into the small hole in the SIM card tray at the top of the phone.
- Press to eject the tray. This may require some force.
- Remove the SIM card tray.

## Step 2 — S-Pen



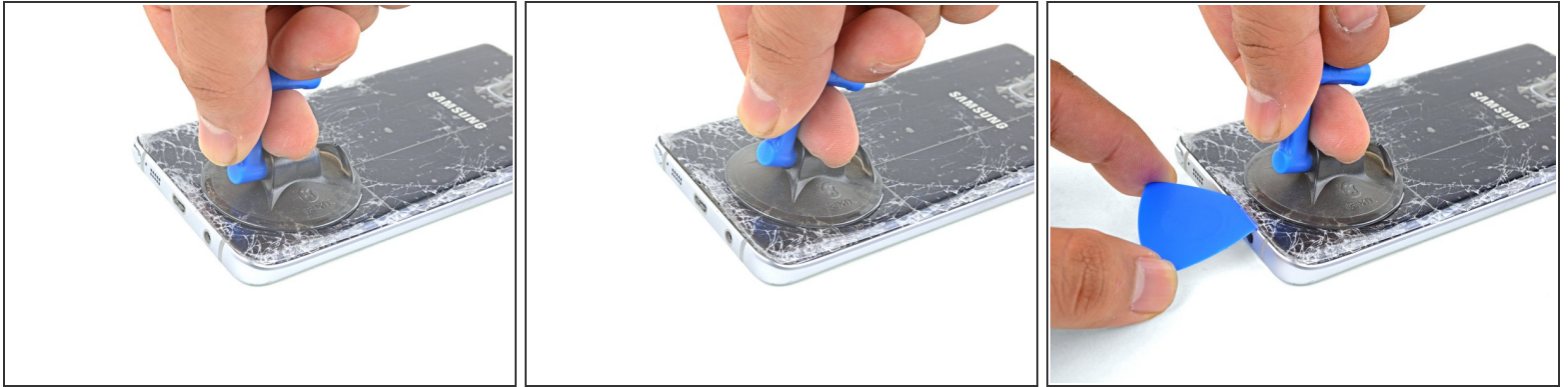
- Using your fingernail, push the S-Pen button until it clicks and pops out of the phone.
- Remove the S-Pen.

## Step 3 — Rear Glass



- ⓘ If the glass back is cracked, [carefully tape over the entire surface with packing tape](#).
  - Apply a [heated iOpener](#) to the bottom of the phone for about two minutes.
  - ⓘ You may need to reheat and reapply the iOpener several times to get the phone warm enough. Follow the iOpener instructions to avoid overheating.
- ⚠ A hair dryer, heat gun, or hot plate may also be used, but be careful not to overheat the phone—the OLED display and internal battery are both susceptible to heat damage.

## Step 4



- Apply a suction cup as close as possible to the bottom edge of the phone.
  - ❗ If the phone's back cover is cracked, the suction cup may not stick. Try [lifting it with strong tape](#), or superglue the suction cup in place and allow it to cure so you can proceed.
  - Lift on the suction cup and insert an opening pick under the rear glass.
- ⚠ The rear glass very fragile and can break if you use too much force or attempt to pry with metal tools.

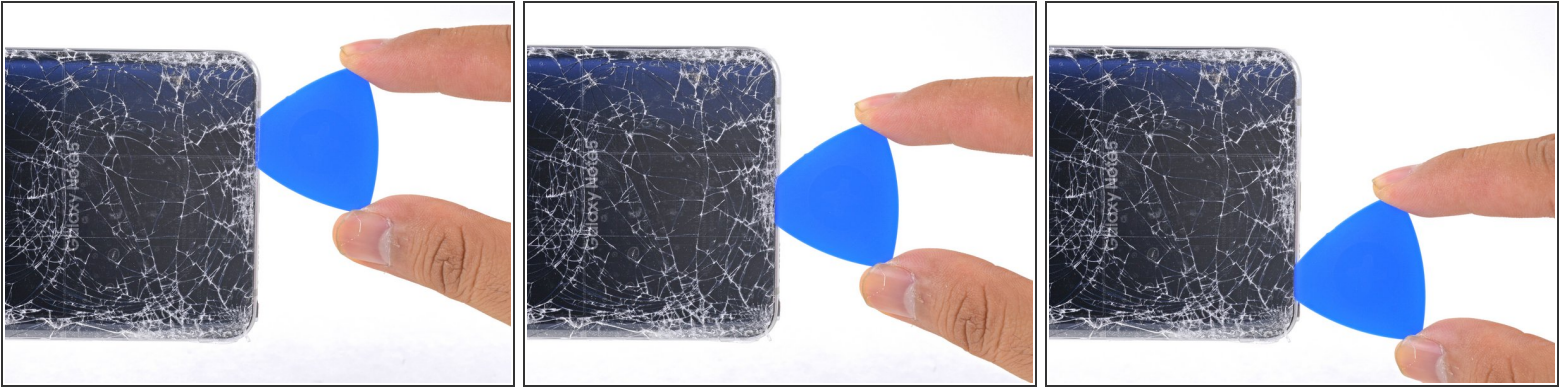
## Step 5



- Once the pick is in place, reheat the edge with an iOpener for another minute.

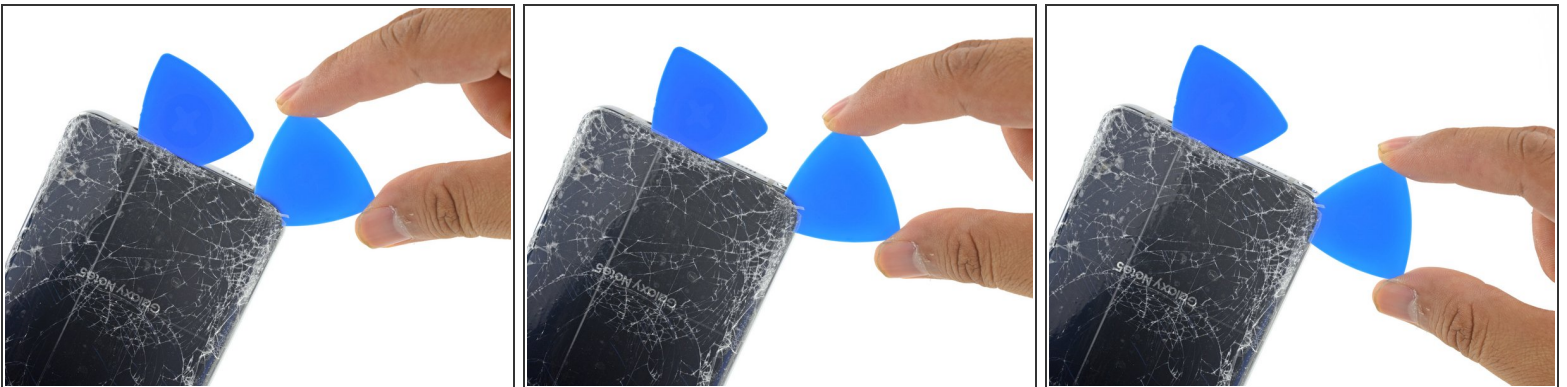


## Step 6



- Slide the pick down the bottom edge of the phone.
- i** Go slowly so that the tip doesn't slip out of the seam. If sliding becomes difficult, reheat and reapply the iOpener.
- Leave the pick in place to prevent the adhesive from resealing, and grab another pick as you proceed to the next step.

## Step 7



- Insert another pick and slowly cut around the corner of the phone.
- !** Due to the curved shape of the back, the glass is extremely fragile and prone to cracking in the corners. Be patient and reapply an iOpener if the corner feels hard to slice through.

## Step 8



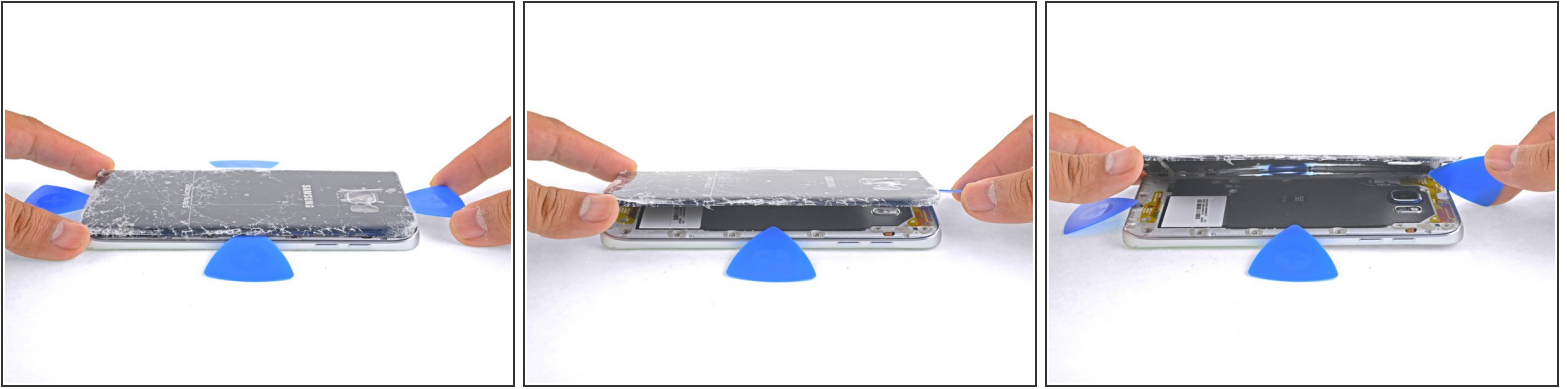
- Before cutting further, apply a heated iOpener to the long edge.

## Step 9



- Repeat the previous heating and cutting procedure for the remaining three sides of the phone.
- Leave an opening pick in each edge of the phone as you continue to the next to prevent the adhesive from resealing.

## Step 10



- Use an opening pick to cut any remaining adhesive around the edges of the glass.
- Lift the glass and remove it from the phone.

## Step 11

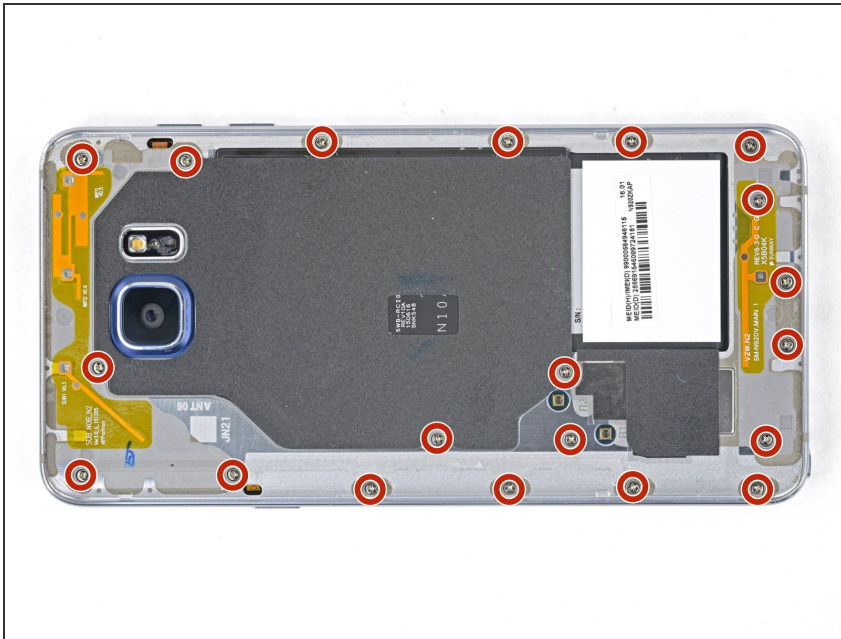


- ★ To reinstall the back cover:
- Use tweezers to peel away any remaining adhesive from both the back cover and the phone's chassis.
  - Clean the adhesion areas with high concentration isopropyl alcohol (at least 90%) and a lint-free cloth. Swipe in one direction only, not back and forth. This will help prep the surface for the new adhesive.
  - Be sure to turn on your phone and test your repair before installing new adhesive and resealing the phone.



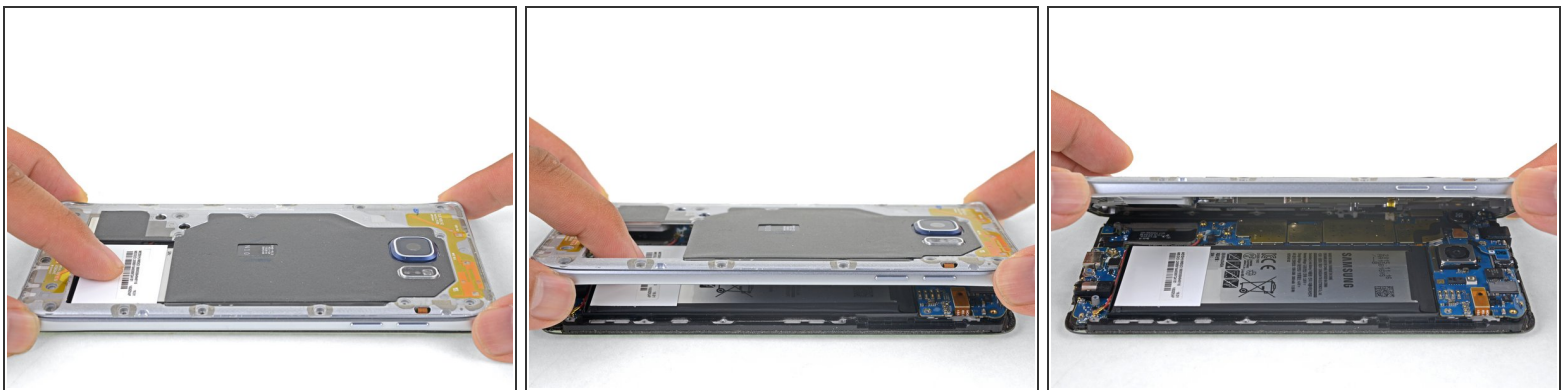
- ① Replacement adhesive comes in a pre-cut sheet to match the exact contours of the back cover. If that's not available, you can use a high-bond double-sided tape, such as [Tesa 61395](#). Be aware that this leaves gaps that are vulnerable to liquid intrusion.
- After installing the rear cover, apply strong, steady pressure to your phone for several minutes to help the adhesive form a good bond, such as by placing it under a stack of heavy books.
- ① If desired, you may reinstall the back cover without replacing the adhesive. Remove any large chunks of adhesive that might prevent the back cover from sitting down flush. After installation, heat the back cover and apply pressure to secure it. It won't be waterproof, but the glue is usually more than strong enough to hold.

## Step 12 — Midframe



- Remove the twenty 3.3 mm Phillips screws.

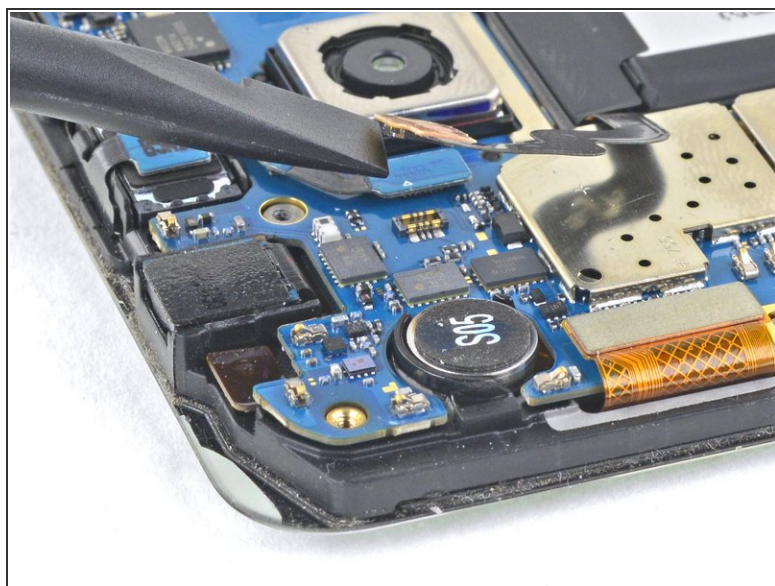
## Step 13



**i** Make sure you've ejected the SIM tray before performing this step.

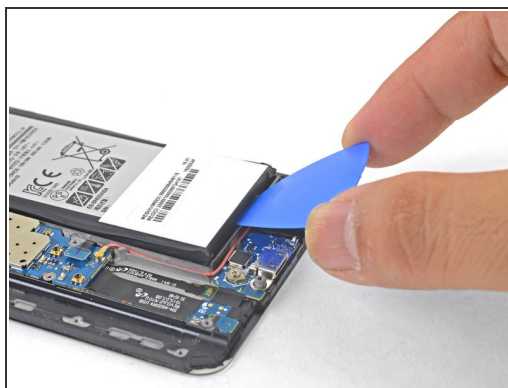
- Hold the midframe by the edges and lift it upwards while pushing down against the battery with one finger.
- i** There is a small amount of adhesive in each corner holding the midframe to the display assembly. Apply constant force until the midframe separates.
- Remove the midframe.

## Step 14 — Samsung Galaxy Note5 Battery Disconnect



- Using the flat end of a spudger, lift the battery connector straight up from its socket on the motherboard.

## Step 15 — Battery



- Slide an opening pick under the bottom edge of the battery to slowly pry it up from the case.
- ⓘ The battery is held in place by strong adhesive. To help with removal, you can apply a heated iOpener on the battery for a minute. Alternatively, apply some isopropyl alcohol under each corner of the battery and allow it to penetrate for several minutes to help weaken the adhesive.
- ⚠ Try your best not to deform the battery during this process. Soft-shell lithium-ion batteries can leak dangerous chemicals, catch fire, or even explode if damaged. Do not use excessive force or pry at the battery with metal tools.

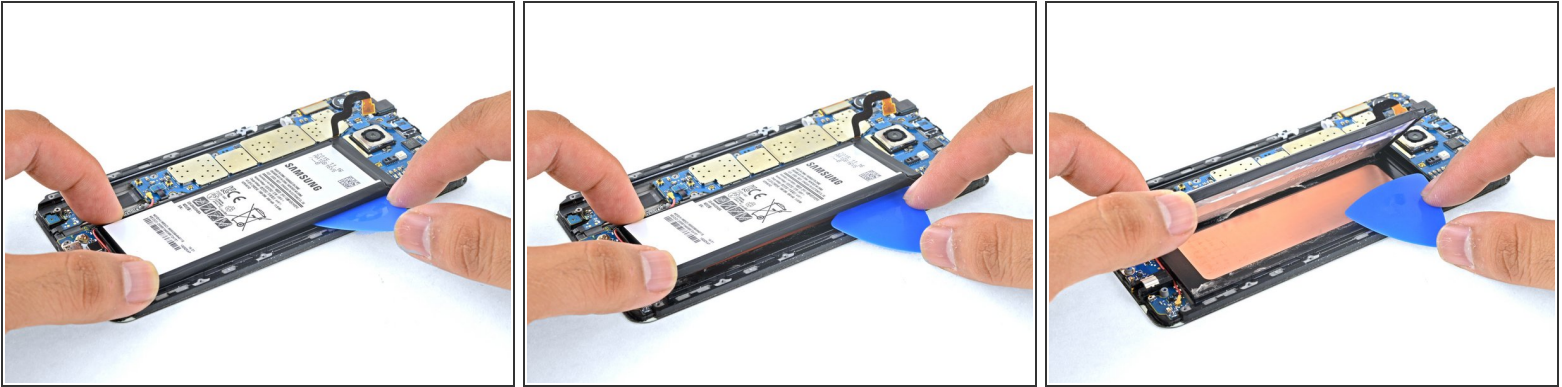
## Step 16




- Slide an opening pick up the side of the battery to break apart any remaining adhesive.




## Step 17



- Lift the battery out of the case.

 Do not reuse the battery after it has been removed, as doing so is a potential safety hazard. Replace it with a new battery.

 To install a new battery:

- Remove any remaining adhesive from the phone, and clean the glued areas with isopropyl alcohol and a lint-free cloth.
- Secure the new battery with [pre-cut adhesive](#) or double-sided adhesive tape. In order to position it correctly, apply the new adhesive into the phone, not directly onto the battery. The adhesive should go around the perimeter of the battery compartment, but not in the rectangular cutout in the center (which is actually the back side of the display).
- Press the battery firmly into place for 5-10 seconds.

Compare your new replacement part to the original part. You may need to transfer remaining components or remove adhesive backings from the new part before installing.

To reassemble your device, follow the above steps in reverse order. [Take your e-waste to an R2 or e-Stewards certified recycler.](#)

Repair didn't go as planned? Check out our [Answers community](#) for troubleshooting help.