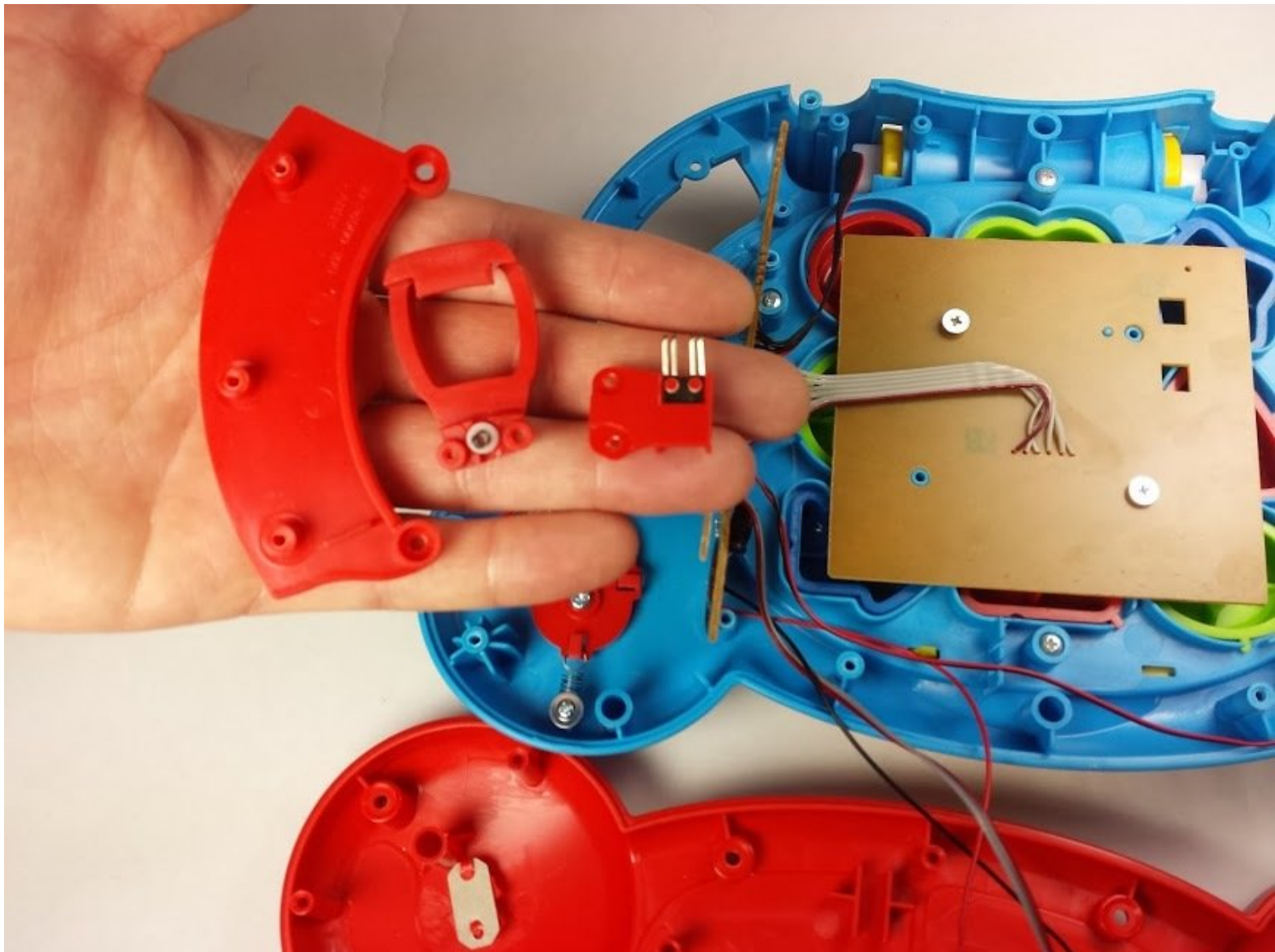




VTech Baby's Learning Laptop Mode Switch Replacement

Replace the laptop mode switch assembly.

Written By: Scott Parkinson



INTRODUCTION

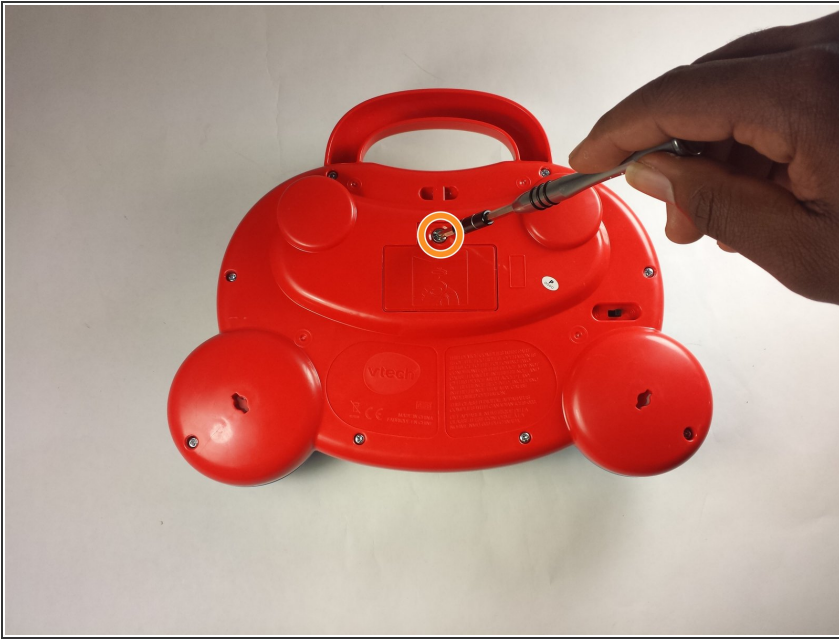
This guide will show you how replace a faulty mode switch if your device does not properly switch modes.



TOOLS:

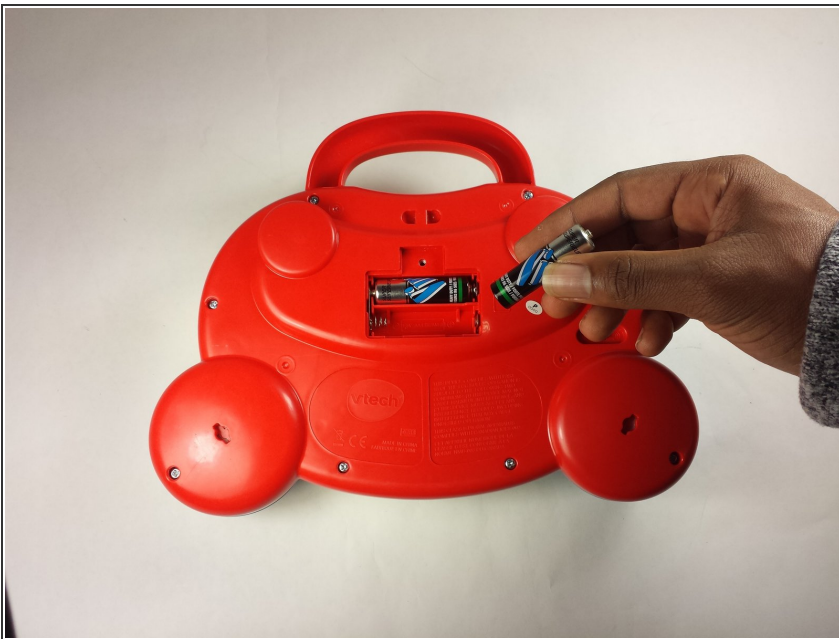
- [Phillips #0 Screwdriver](#) (1)
 - [iFixit Opening Tools](#) (1)
 - [Phillips #2 Screwdriver](#) (1)
-

Step 1 — Battery and Rear Panel



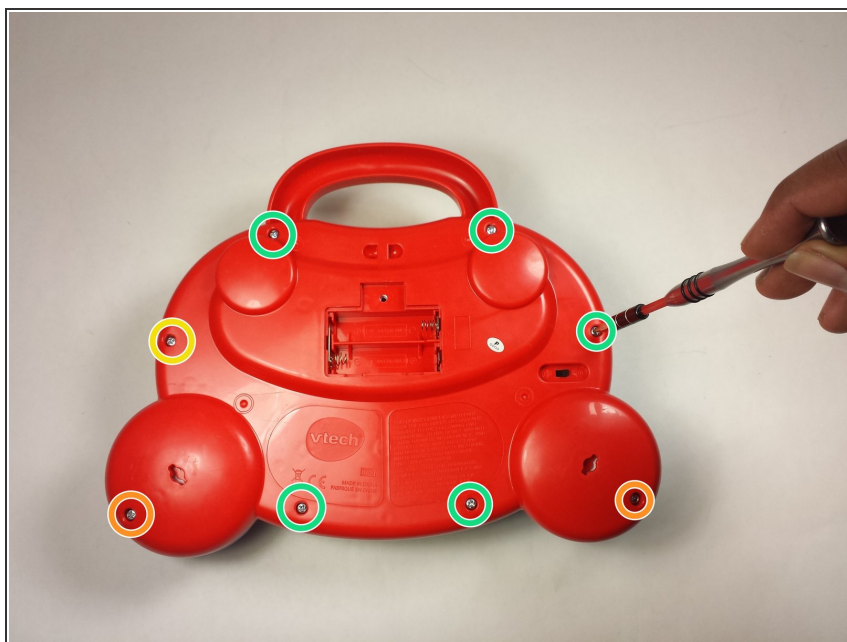
- To remove the battery door, loosen the screw shown using a Phillips #2 screwdriver.
- ⓘ A coin can also be used to loosen the screw.

Step 2



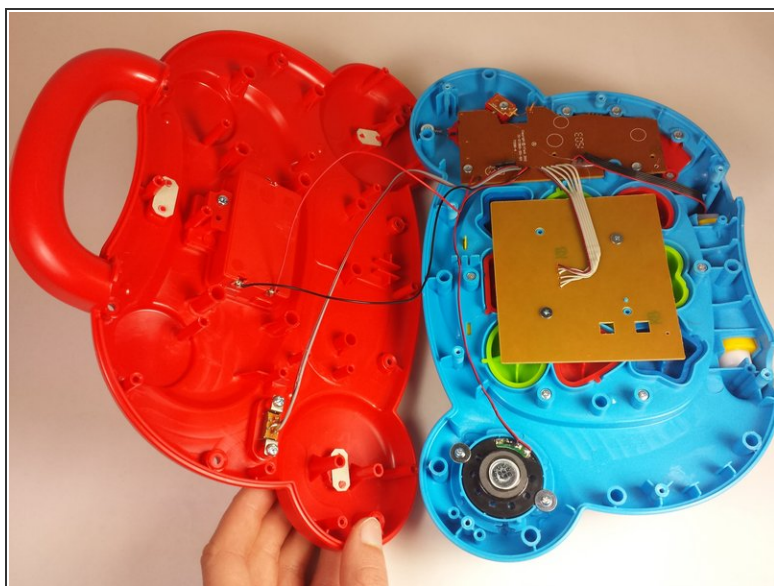
- Remove the battery door.
- Take out the batteries.

Step 3



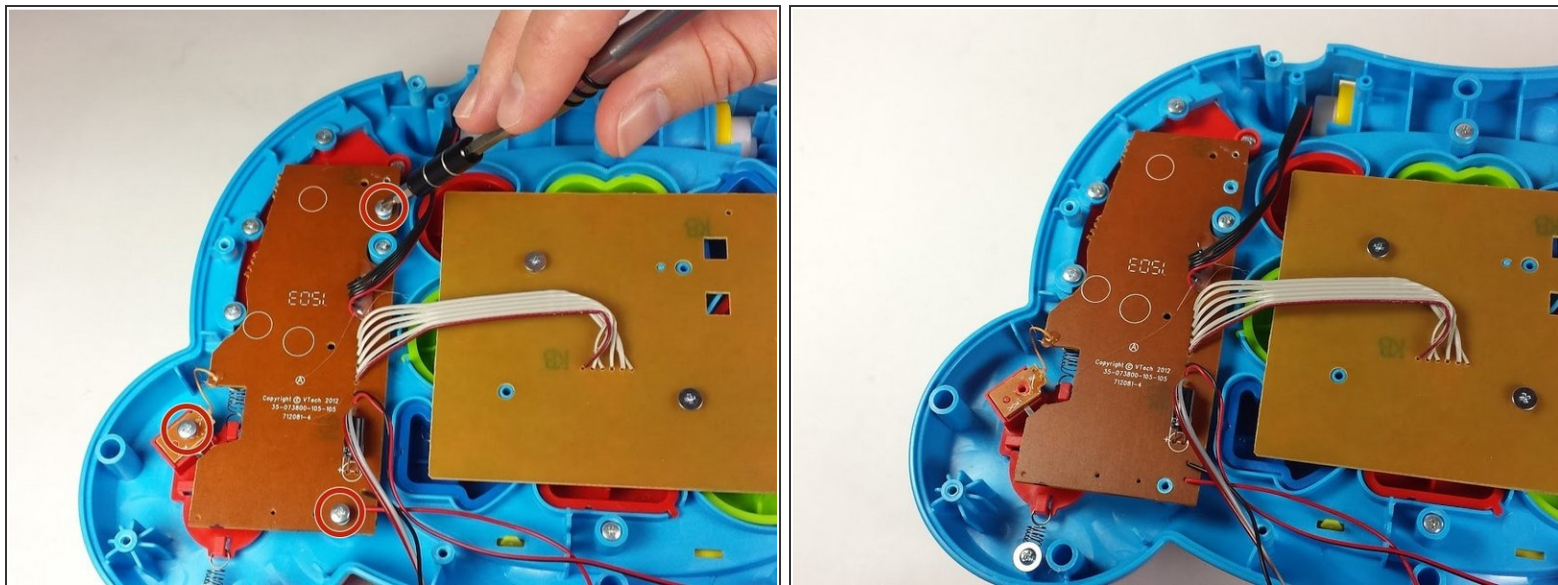
- Remove the rear panel screws using a Phillips #2 screwdriver.
- Two 21.6mm (Long)
- One 9.8mm (Short)
- Five 13.8mm (Medium)

Step 4



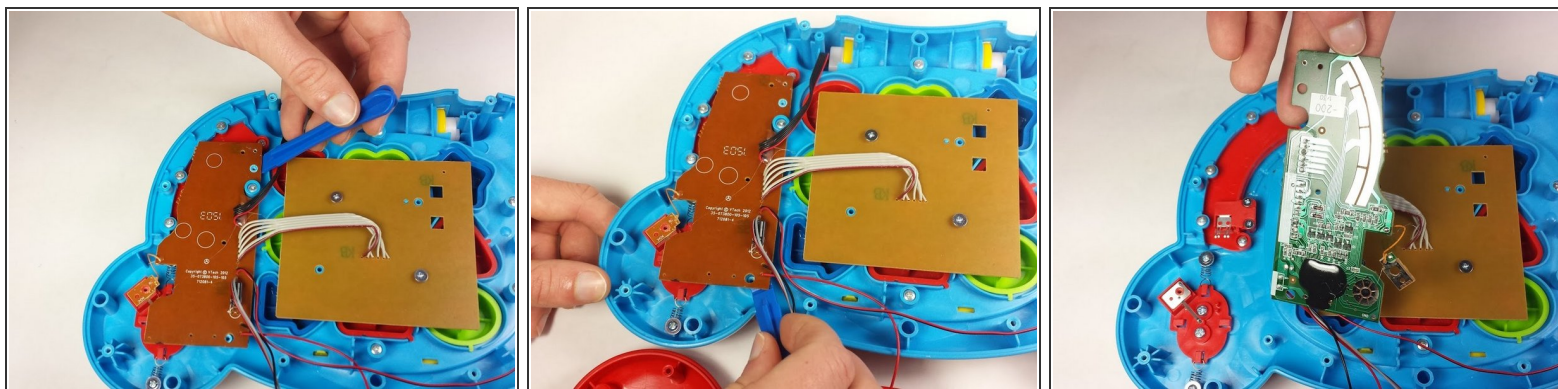
- Gently pull up on the rear panel.
- ⚠ Be careful not to pull on the wire connections.
- Rest the laptop open on the table.

Step 5 — Mode Switch



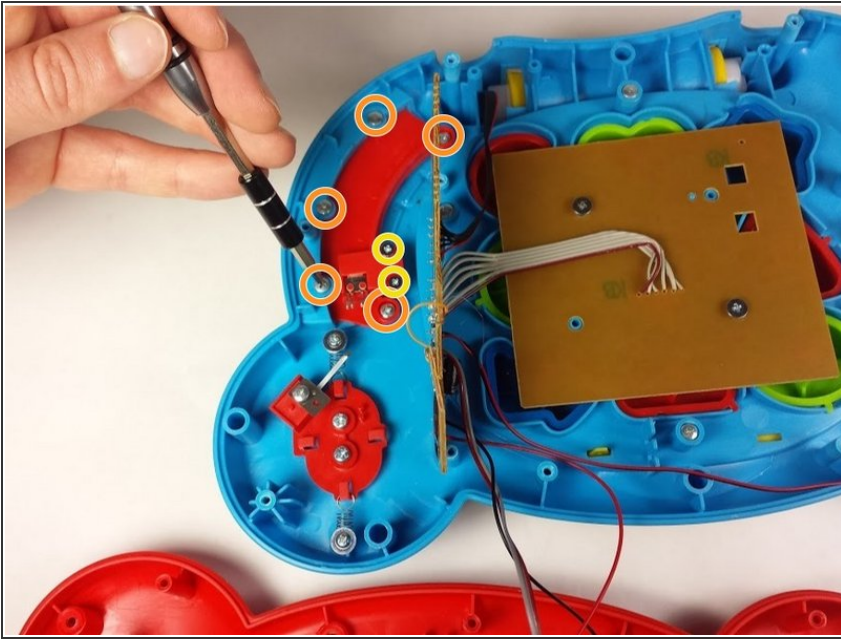
- Using a Phillips #0 screwdriver, remove the three 7.3mm screws.

Step 6



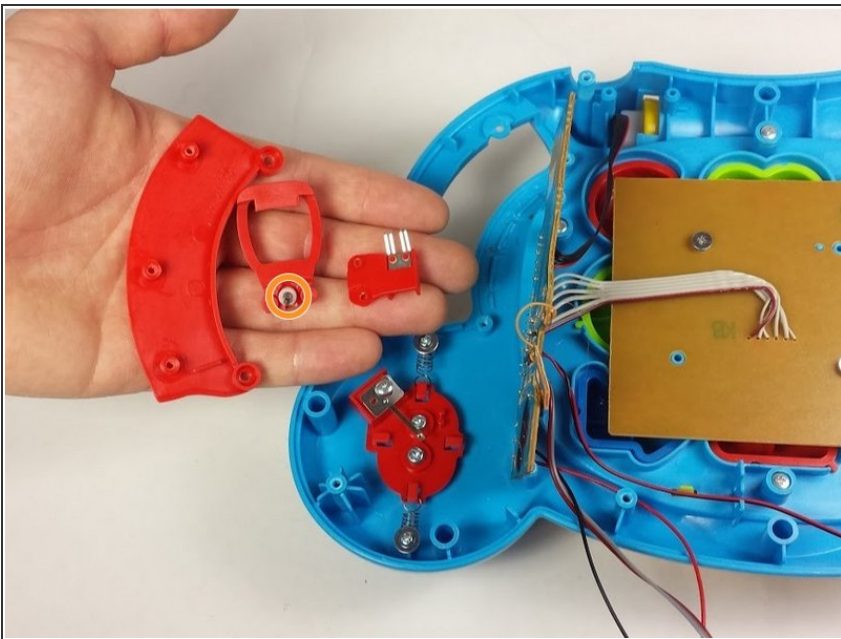
- Once the screws have been removed from the board, use a plastic opening tool to gently pry up the board and expose the mode switch assembly underneath.
- ⓘ Lay the board down gently and out of the way.
- ⚠ Take care not to damage any of the wires or the board itself.

Step 7



- Using a Phillips #0 screwdriver, remove the seven screws securing the mode switch assembly to the device.
 - Five 7.3mm
 - Two 6.0mm

Step 8



- Once the screws have been removed, the mode switch assembly can be removed easily.
- ⚠ Take care not to misplace the spring indicated in the picture.
- You need this spring to find a matching replacement if it is in anyway damaged.

To reassemble your device, follow these instructions in reverse order.