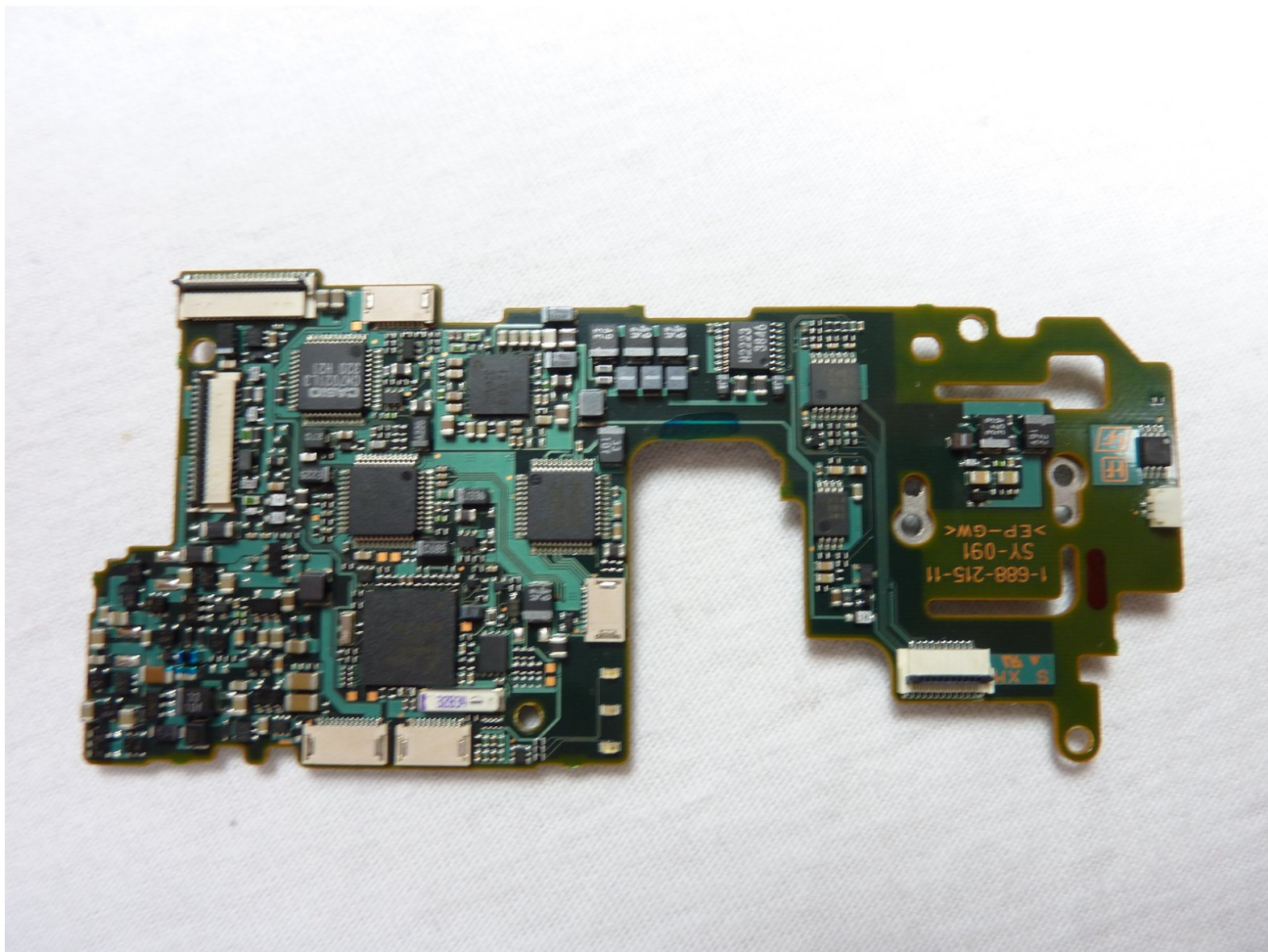




Sony Cyber-shot DSC-P52 Motherboard Replacement

This guide explains how to remove and replace a motherboard in the Sony Cybershot DSC-P52.

Written By: Trevor



INTRODUCTION

If you are confident that your motherboard needs to be replaced, and have a replacement motherboard, then follow this guide.



TOOLS:

- [Phillips #0 Screwdriver](#) (1)



PARTS:

- [Motherboard Replacement](#) (1)

Step 1 — Outer Case



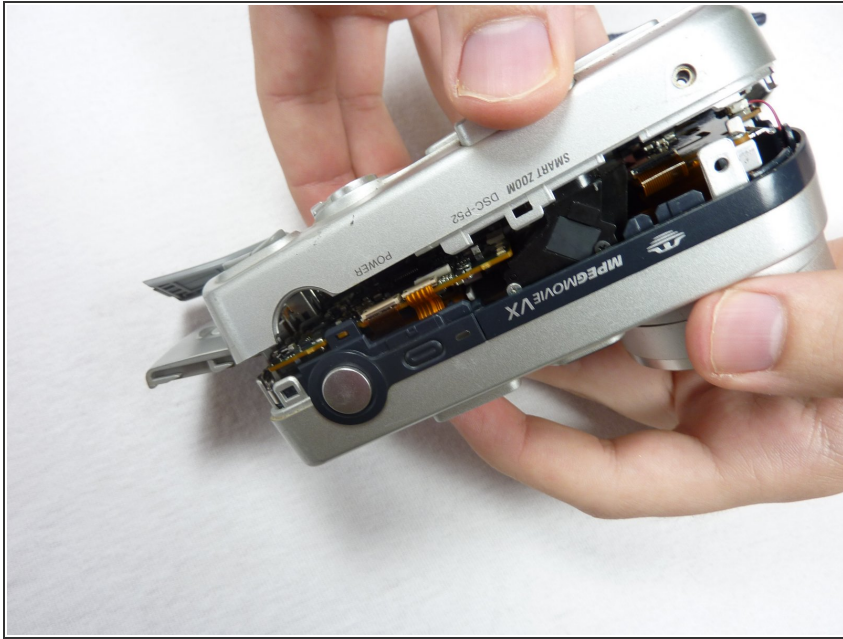
- Open the battery compartment and remove the batteries.
- Remove all of the visible screws on the outside of the case.
- ① There should be three of them that are all easily located.

Step 2



- Open the memory card compartment.
- Remove the screw next to the memory card slot.

Step 3



- Pull apart the front and back cover pieces carefully.
- ⓘ The front cover should come completely free with little effort.
- ⓘ The back cover will still be attached to the circuit board.

Step 4



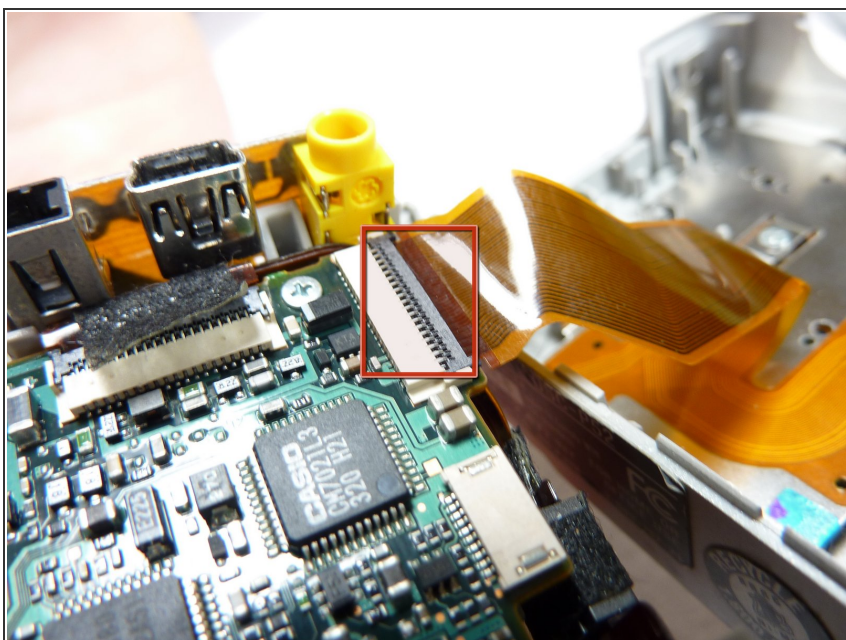
- Simultaneously unclip all of the clips holding in the circuitry. Remove the back case.
- ⓘ The circuitry will still be connected to the back case by ribbon cables.

Step 5



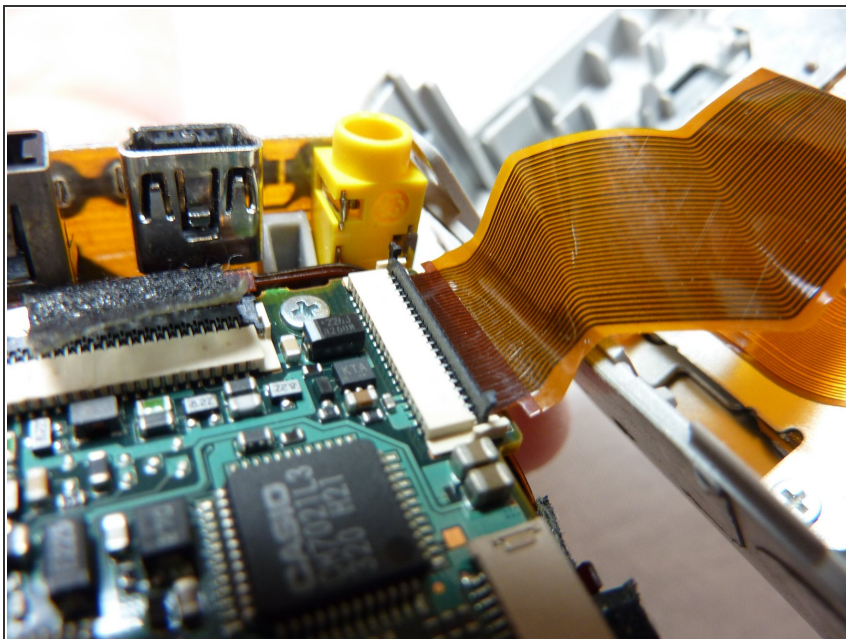
- Open the case as shown.

Step 6



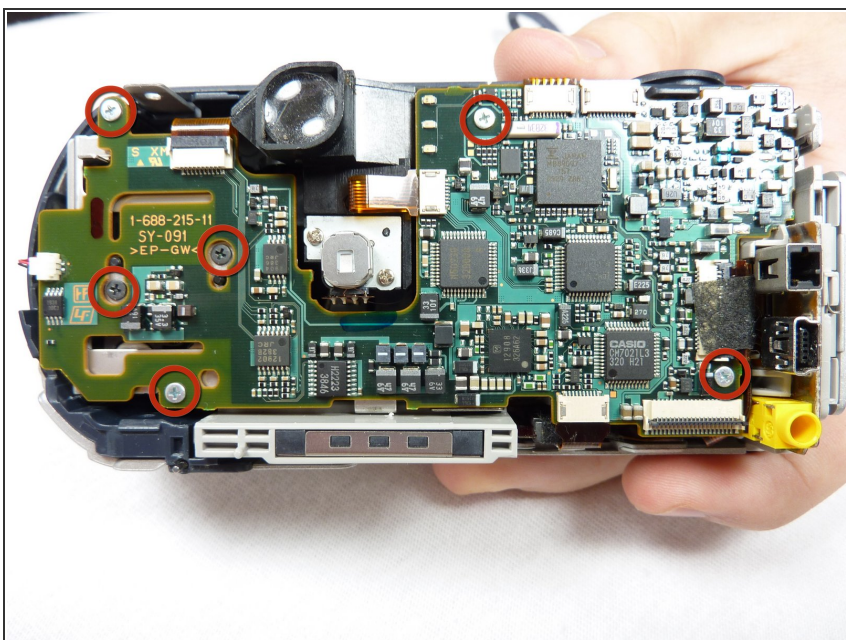
- Unclip the clip holding the ribbon cable in.
- ⓘ Other ribbon cables might not have a clips.

Step 7



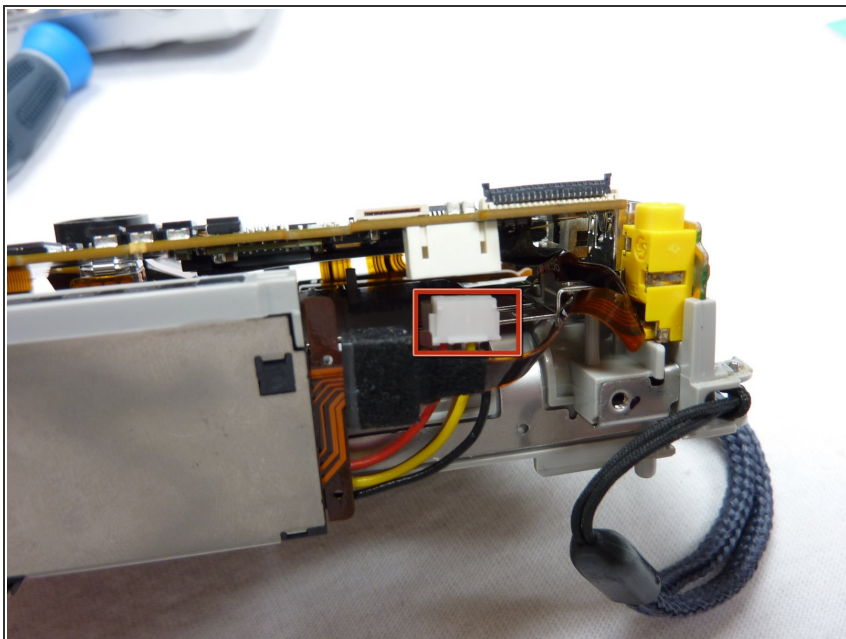
- Pull the ribbon cable out.

Step 8 — Motherboard Assembly



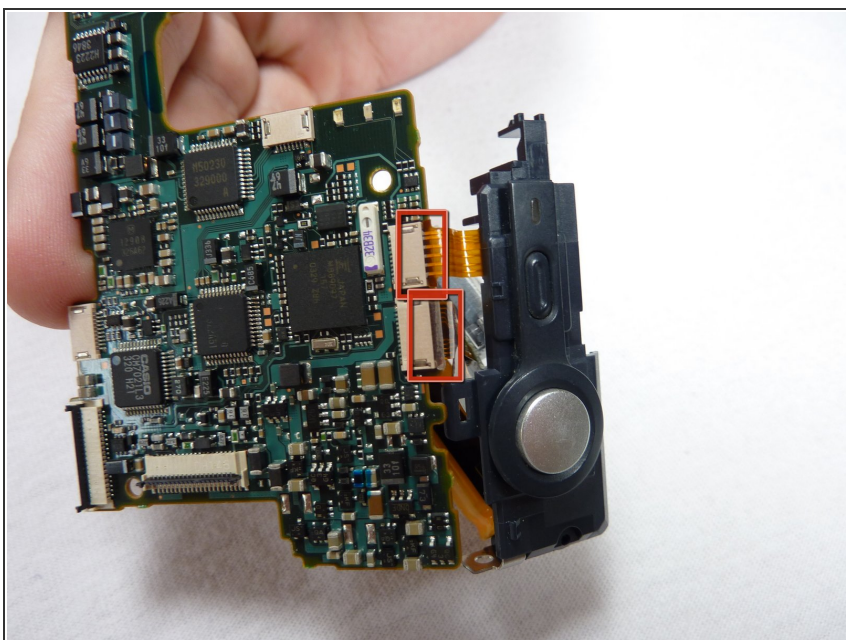
- Remove all six screws on the front side of the motherboard circled in the picture.
 - Pull the motherboard from the rest of the housing.
- i** It will still be connected to the flash unit.

Step 9



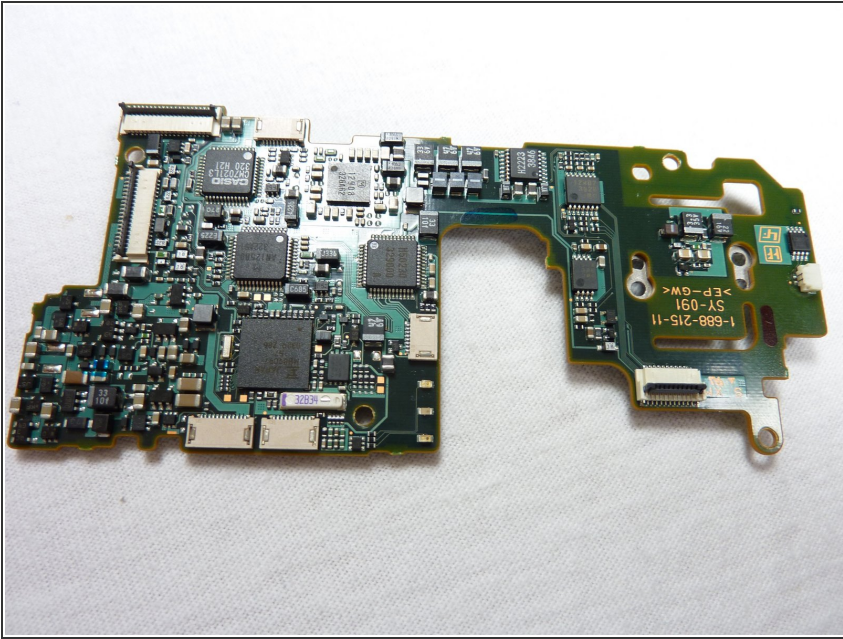
- Remove the cable on the back side of the motherboard.

Step 10



- Detach the ribbon cables shown.
- ⚠ Careful! Touching the leads of the large yellow capacitor can result in a painful shock.
- Remove the flash unit from the motherboard.

Step 11 — Motherboard



- The motherboard is now free, and ready to be replaced by a new one.

To reassemble your device, follow these instructions in reverse order.