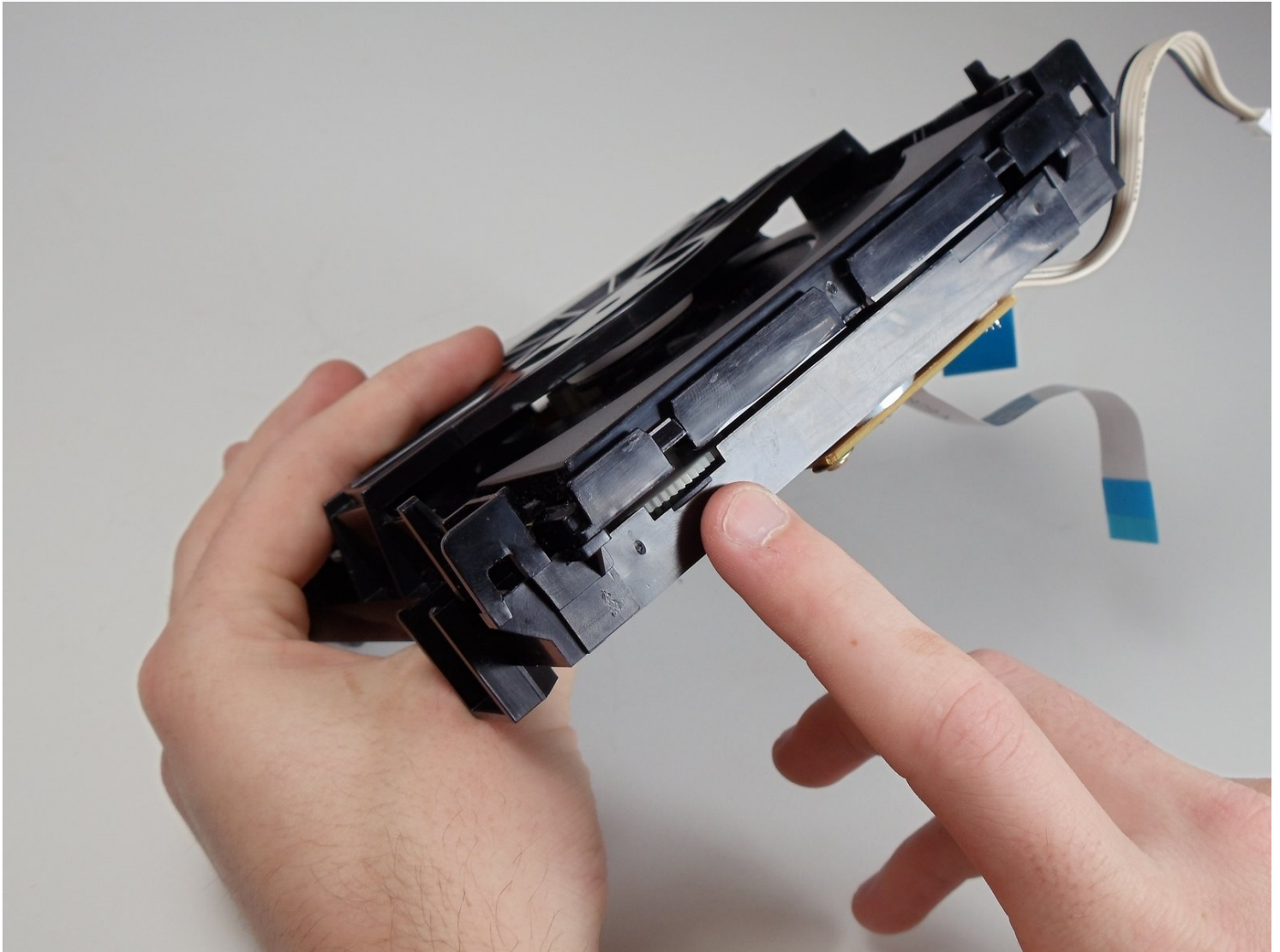




# Samsung DVD-P230 Tray Motor Replacement

If your Samsung DVD-P230's DVD tray is: opening...

Written By: Mitchell Hart



# INTRODUCTION

If your Samsung DVD-P230's DVD tray is: opening slow, intermittently, or not at all, then use this guide to open up and replace either the rubber band or tray motor in the DVD drive.

The DVD drive is what reads the discs to the rest of the DVD player so that If the tray is faulty, then you may not even be able to insert a disc at all.

Make sure to have both a #2 Phillips screwdriver handy, and the understanding that you will have to disconnect some internal connectors and ribbon cables, as well as pulling some plastic clips.

Remember to take out any discs that may be inside the drive. Leave the player plugged in and powered on for Steps 1 and 2.

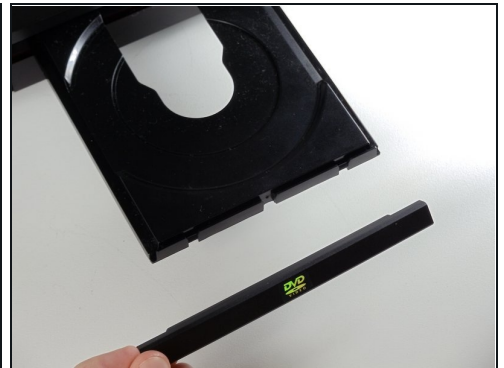
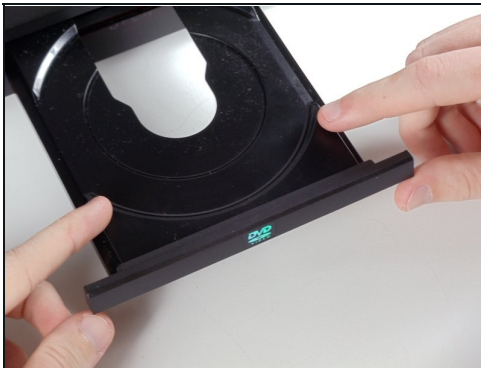
---

## TOOLS:

[Phillips #2 Screwdriver](#) (1)

---

### Step 1 — Outer Cover & Faceplate



- Open the tray by pressing the eject button
- Remove the DVD tray faceplate by pushing the faceplate up off of the tray.

## Step 2



- Press the eject button to insert the tray
- After the tray is closed unplug DVD player

## Step 3



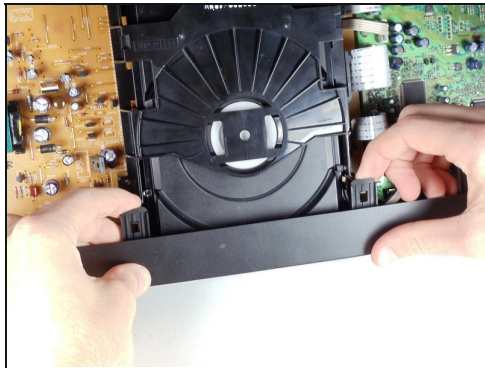
- Unscrew the 3 screws in the back.

## Step 4



- Pull the outer case upward and then towards you.

## Step 5



- There are six symmetrically placed tabs holding in the front faceplate. Unhook these six tabs to loosen the faceplate.

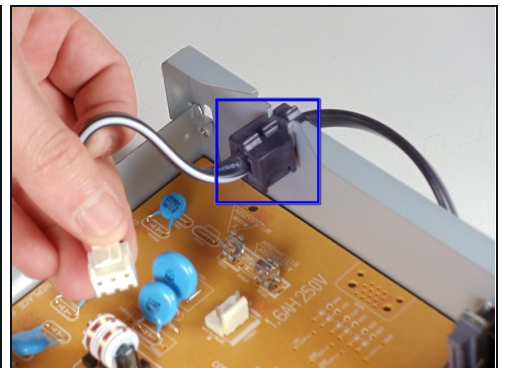
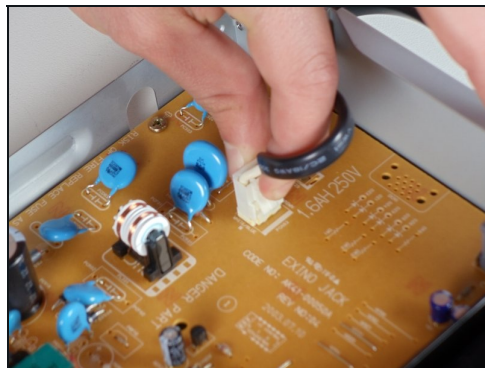
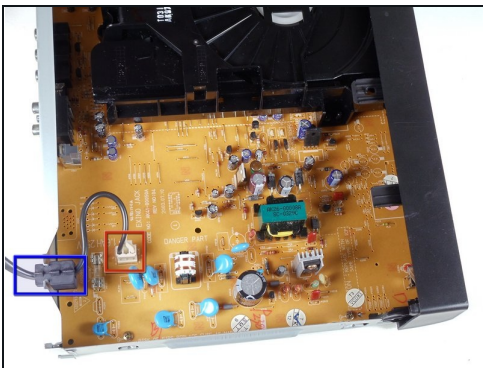


## Step 6



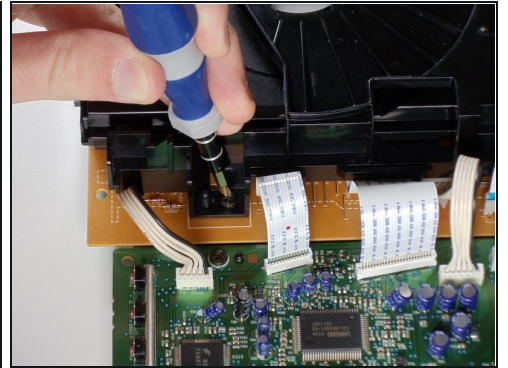
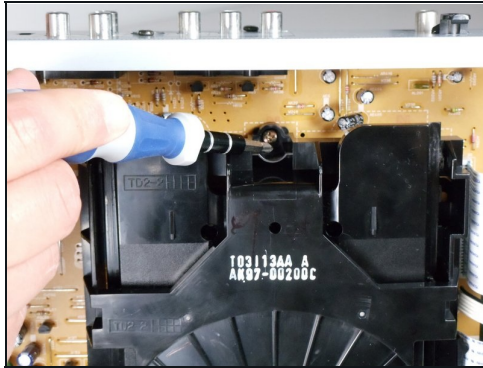
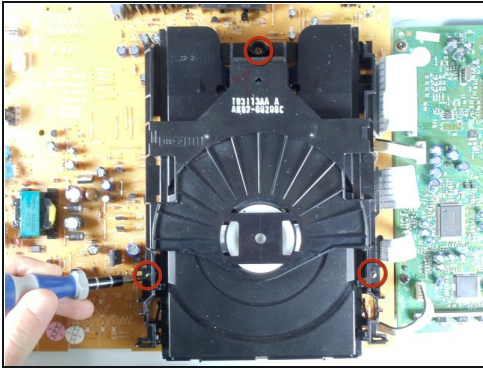
- Pull off front faceplate. This may take a couple of tries to get all six tabs unhooked simultaneously.

## Step 7 — Power Cord



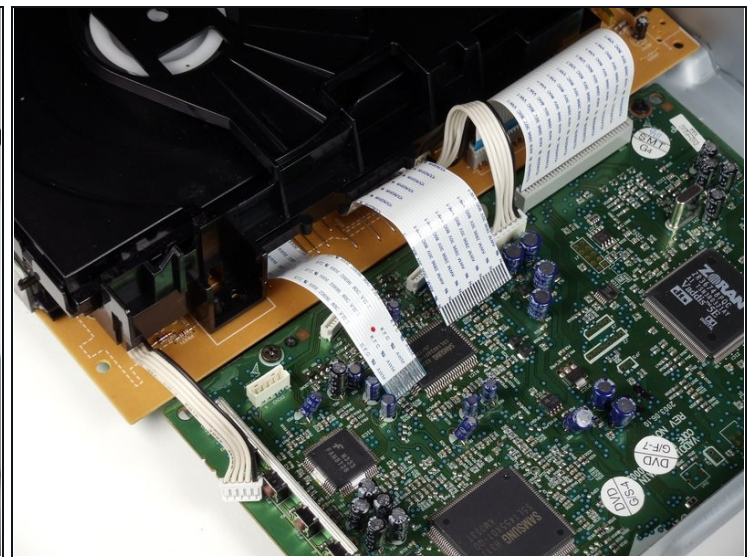
- Locate the white clip that attaches the cord to the motherboard
- Grasp clip and squeeze to release
- Lift up and remove power cord
- Slide cord mount from outer case

## Step 8 — Tray



- Remove the three screws holding in the DVD tray

## Step 9



- Remove the power cord and first two ribbons by pulling them directly out of their sockets.

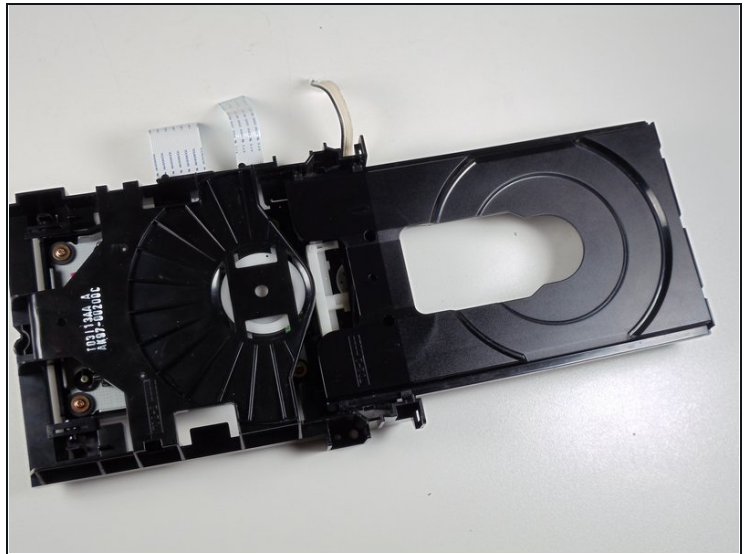
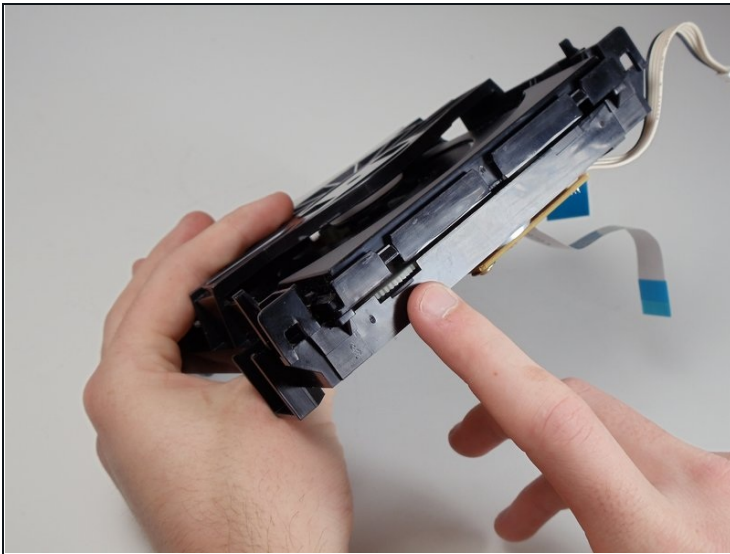


## Step 10



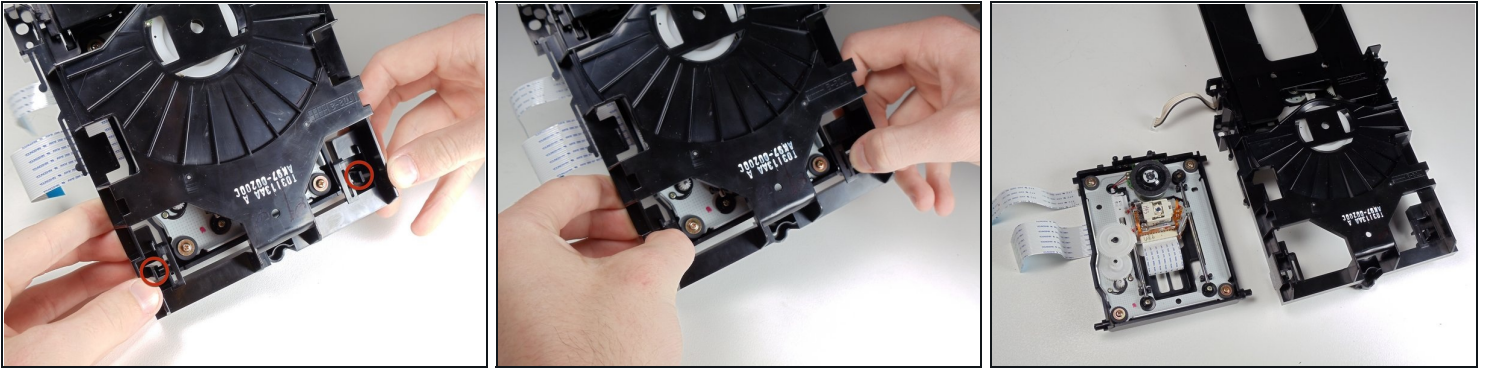
- Gently lift the DVD tray off of the motherboard.

## Step 11 — Tray Motor



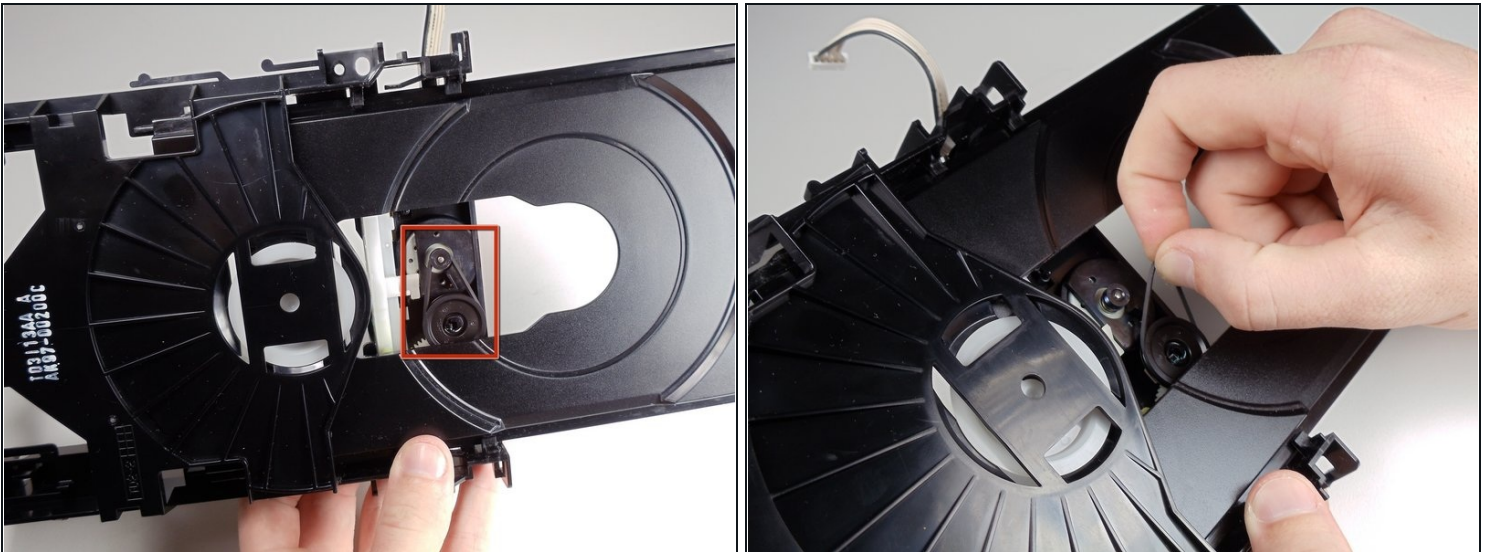
- Spin the small gear shown to the right to begin opening the tray. There should be relatively little resistance in the gear.

## Step 12



- Use your fingers to pull the shown tabs towards the sides of the tray, releasing the internal tray that contains the laser.

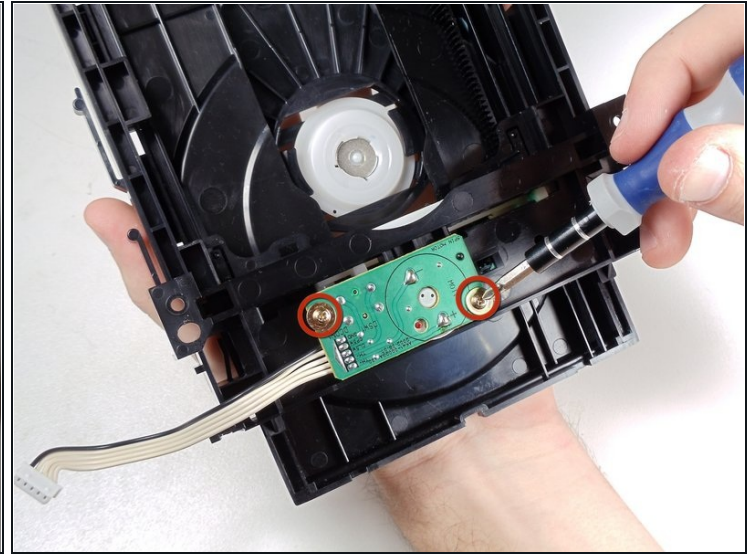
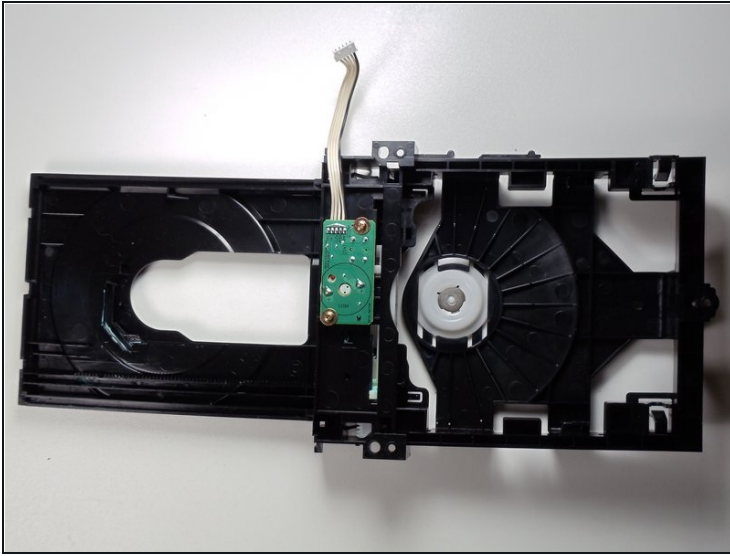
## Step 13



- In order to remove the tray motor you must detach the small rubber band that runs between the two shown wheels.
- If the rubber band is improperly fitted onto one of the wheels or broken this is probably the cause of the tray not opening or closing.



## Step 14



- Flip over the tray.
- Unscrew the two screws that attach the motor to the tray.
- Once completed the motor can be easily removed and replaced.

---

To reassemble your device, follow these instructions in reverse order.