



# Dell 48x IDE Internal CD-ROM Drive Teardown

This will let you know how to take apart your CD drive and to know how to go inside the device.

Written By: Brandon Frise



---

# INTRODUCTION

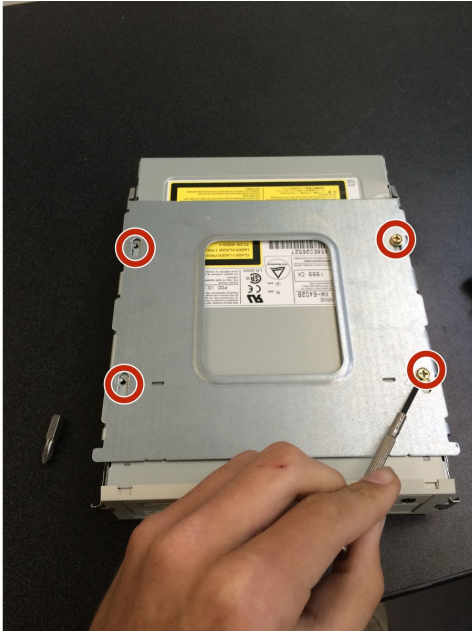
Learn to take apart a Dell 48x IDE Internal CD-ROM Drive

---

## TOOLS:

- [Phillips #1 Screwdriver](#) (1)
-

## Step 1 — Take off the plate on the top



- Unscrew the top four screws.
- ⚠ Make sure that you don't mix up the screws.
- ✦ They are different and you don't want to use the wrong screws.
- Why would they do that?

## Step 2 — Actually take off the plate



- Take off the plate that you unscrewed last step
- ✦ Put all the parts that you had taken off on the side so you do not lose them

## Step 3 — More Screws



- Unscrew the four screws on the next plate.

## Step 4



- 4- take off the top plate by lifting the back up and lightly pulling up.
- the picture to the left is what it looks like after you take the plate off.

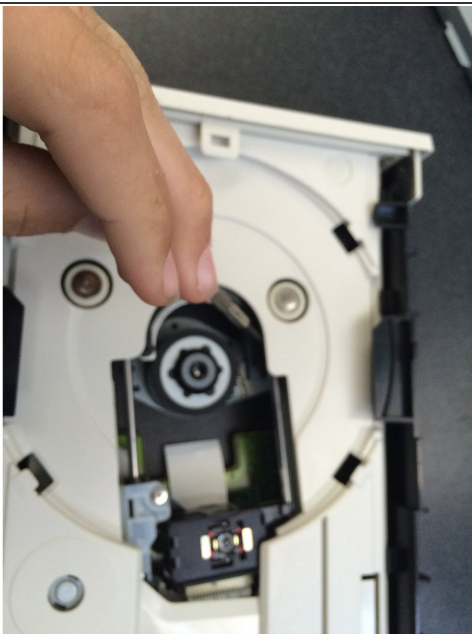


## Step 5



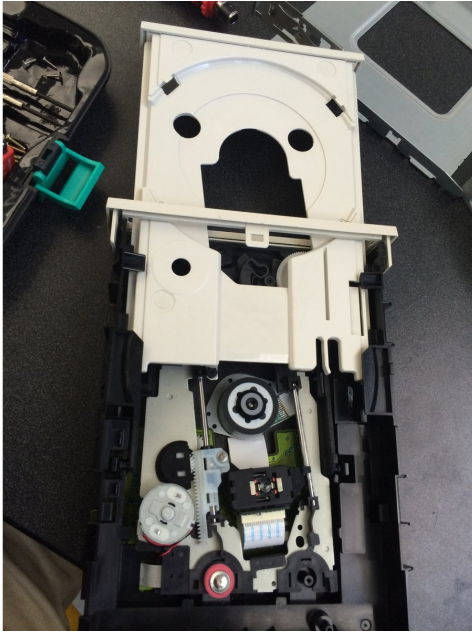
- 5-flip over and push the side tabs in and lift the bottom piece off (it might be hard to do but try not to force it off).

## Step 6



- 6-push piece down and slide the disk piece out.

## Step 7



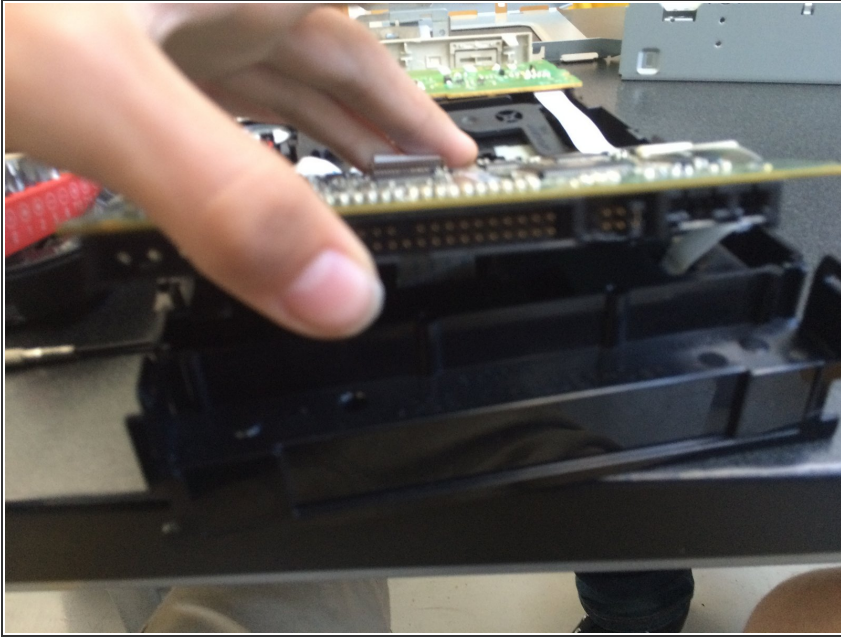
- 7-what is would look like.

## Step 8



- 8-unscrew the three screws on the spin piece.

## Step 9



- 9- unclip the chip in the front/back then lightly lift the piece up.
  - to put this device back together just do the steps backwards, nothing is hard to do.
- ⚠ be cautious because there are wires under the chip do don't pull hard or you are going to break it.

To reassemble your device, follow these instructions in reverse order.