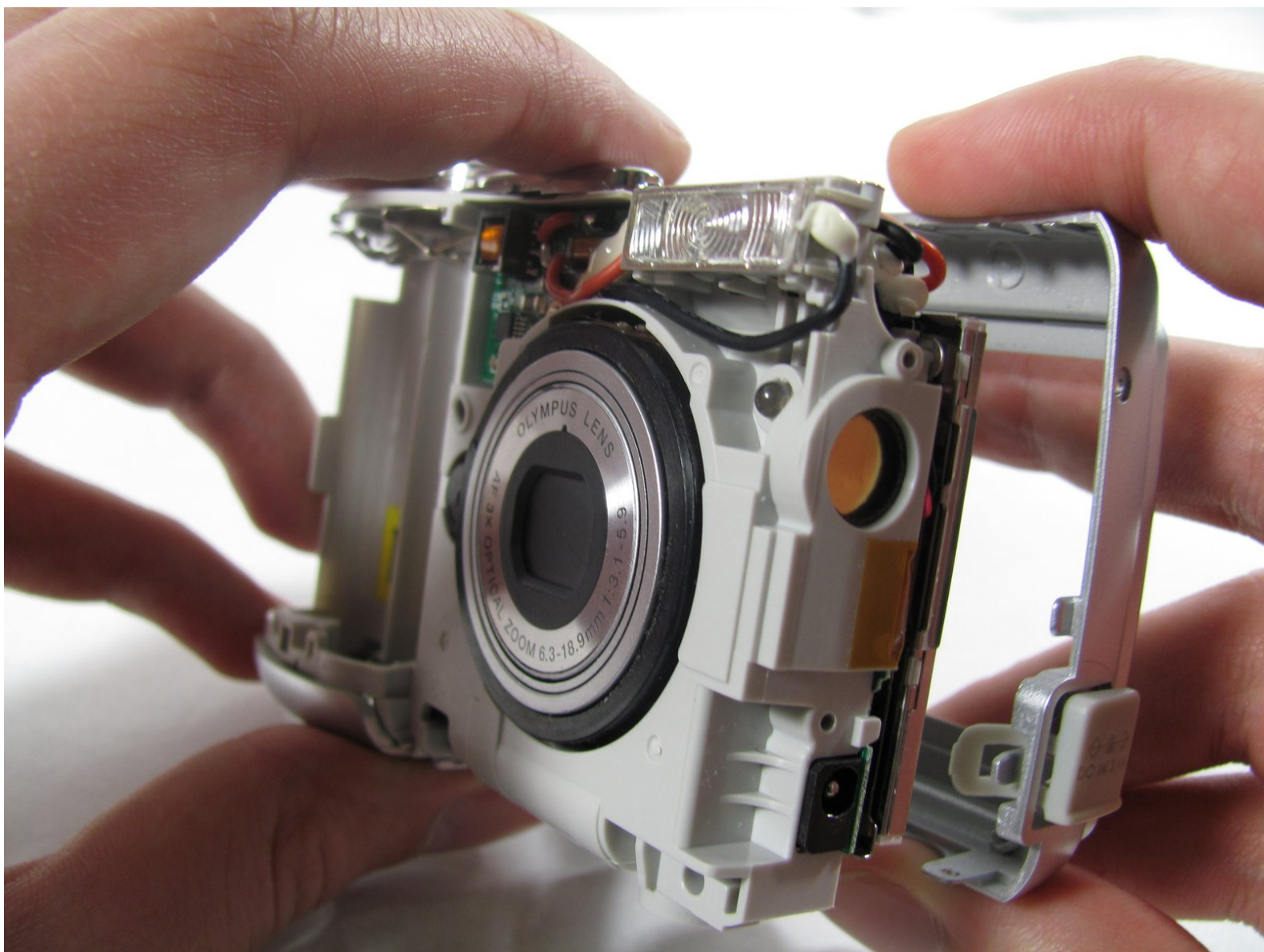




# Removing Olympus FE-210 Rear Casing

This will guide you through the steps necessary for removing the rear camera casing.

Written By: Matt



---

## INTRODUCTION

Removing the rear camera casing will give you access to the inside of the camera.



### TOOLS:

- [Phillips #00 Screwdriver](#) (1)
-

## Step 1 — Battery



- The battery compartment is located on the bottom side of the camera. Push the button in, and slide the cover to get access to the batteries.

## Step 2



- The batteries will slide right out.
- ☑ When putting new batteries in, make sure they are pointing the right direction.



## Step 3 — Front Casing



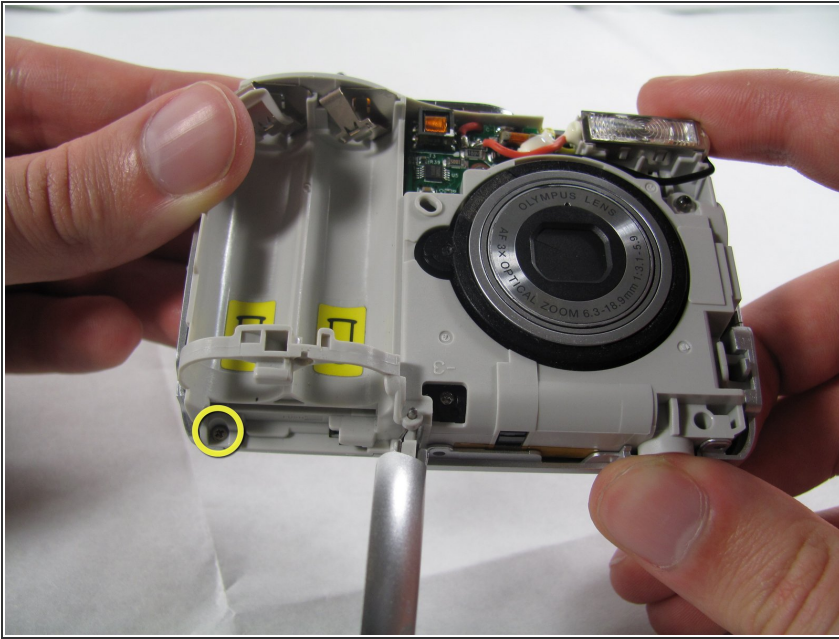
- Remove the 7 screws holding the front case in place, with a #00 screwdriver.
  - Six screws are 3.6 mm.
  - The seventh screw is 3.2 mm.

## Step 4



- Pulling the front case off, requires applying enough strength in the right areas.
  - The front case snaps into place in three places:
    - At the top and bottom of the battery side (opposite of side pictured) of the case.
    - Right in the middle of the DC-in side (side pictured) of the case.
    - Top of the camera, to the left of the power button.
  - Once those places are disconnected, the front case will pop right off.
- i** The camera in the first two pictures is upside down. This is the best position to place your thumbs to remove the case.

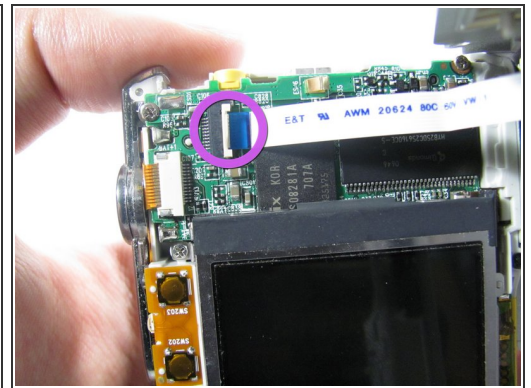
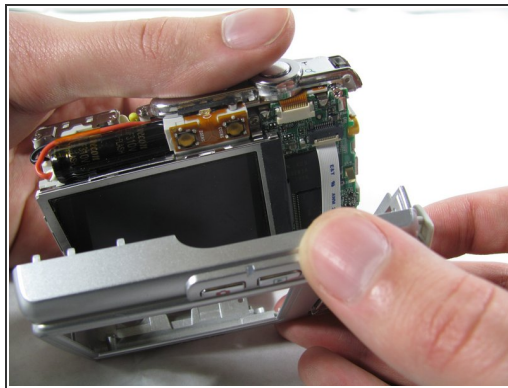
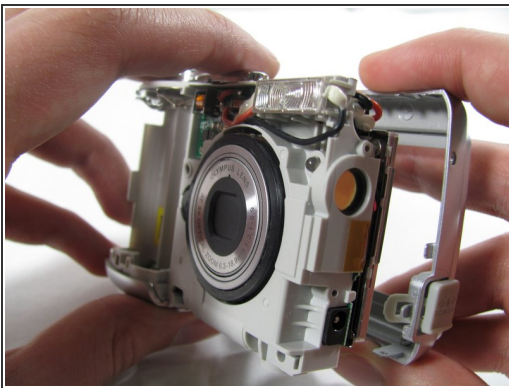
## Step 5 — Rear Casing



- Remove the 3.2 mm screw in the battery compartment using a #00 screwdriver.

⚠ After removal of the screw the case will be loose, but do not tug it off. There is a cord connecting the rear controls to the motherboard.

## Step 6



- Carefully pull the rear case away from the camera until you have access to the cord connected to the motherboard.
- Lift the white latch using a fingernail or a spudger.
- Pull the cord from its connector.

To reassemble your device, follow these instructions in reverse order.