



Palm m500 LCD Screen Replacement

Before you begin disassembly, be sure to have...

Written By: Miles Johnson



INTRODUCTION

Before you begin disassembly, be sure to have the necessary tools. You will need a Torx size T6 screwdriver, tweezers, and the device opening tool. You will be removing the stylus, the back panel, the battery, and the motherboard in order to access the LCD screen.

TOOLS:

[T6 Torx Screwdriver](#) (1)

[Tweezers](#) (1)

[iFixit Opening Tool](#) (1)

Step 1 — Back Panel



- Remove the stylus from the side of the PDA by sliding it upwards.

Step 2



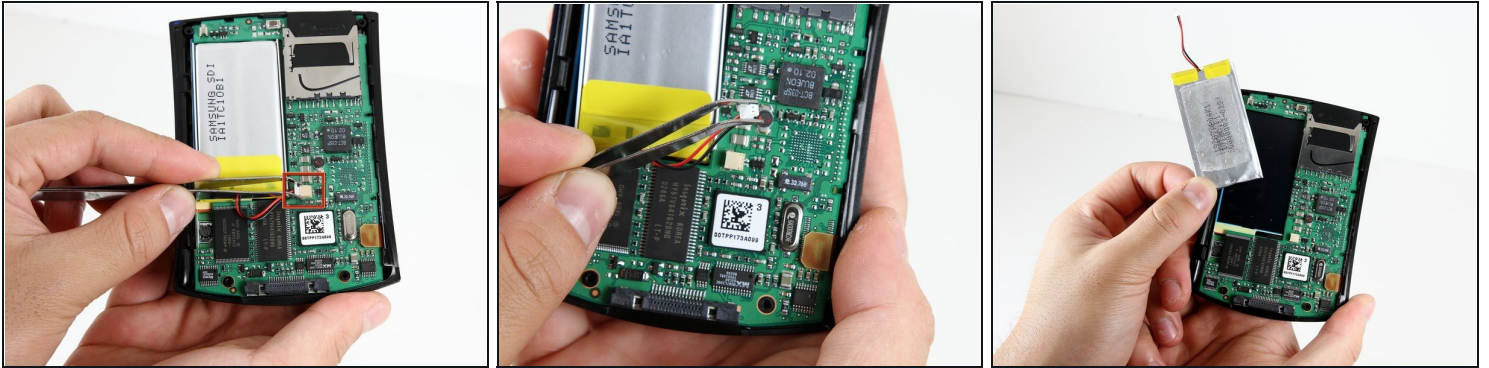
- Remove the 4 screws from the corners of the back panel of the device using a size T6 Torx screwdriver.
- ① Place screws in a plastic bag or another safe place.

Step 3



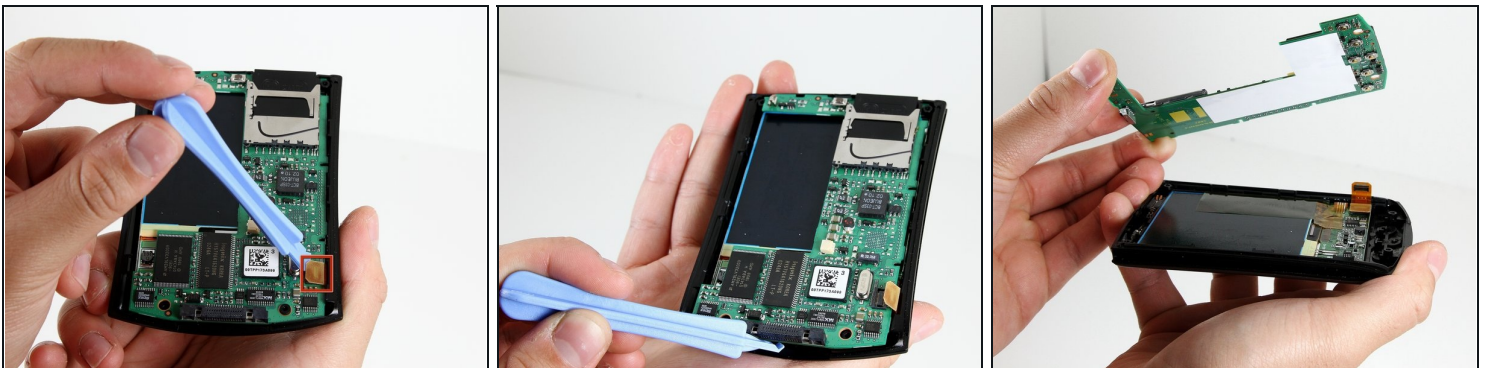
- Insert the edge of the plastic opening tool between the back panel and the black stylus holder.
- Carefully and forcefully pry the panels apart.

Step 4 — Battery



- Use [tweezers](#) to unplug the battery cable from the motherboard socket.
- Gently remove the battery from the motherboard using your thumb and forefinger to pull upwards.
- ⓘ The battery may be difficult to remove because of light adhesive on the back. It may require some force to pry the battery away from the motherboard with your fingers.

Step 5 — Motherboard



- Use the plastic opening tool to pry the orange clamp away from the motherboard.
- Use the plastic opening tool at the bottom of the device to pry the motherboard away from the front plate.
- Gently and forcefully lift the motherboard away from the front plate by using your thumb and forefinger.

Step 6 — LCD Screen



- Pull the LCD screen up from the bottom of the device using your forefinger.
 - The LCD screen will easily come away from the front panel.
-

To reassemble your device, follow these instructions in reverse order.