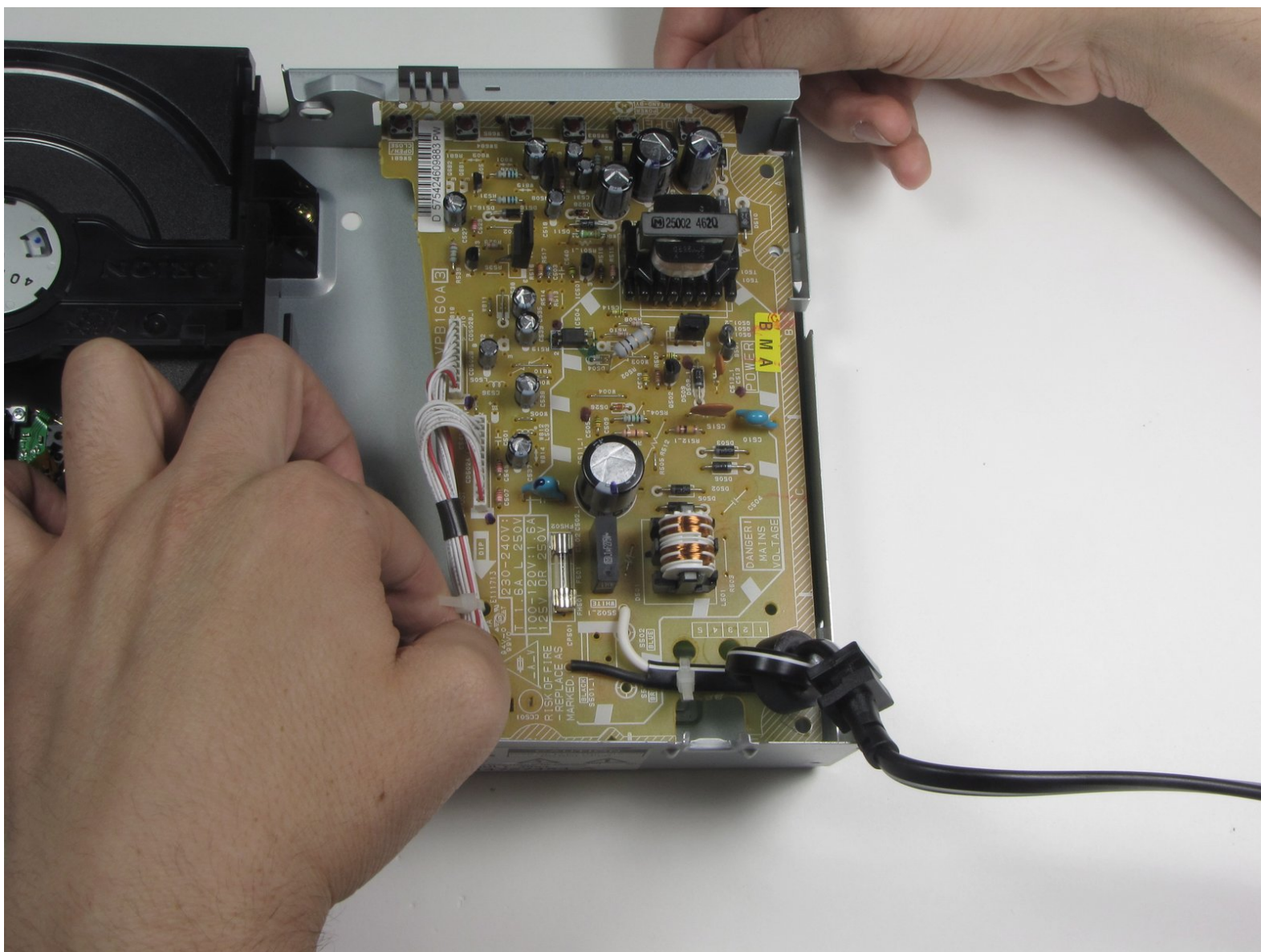




Toshiba SD-K740 Inverter Board Replacement

This guide gives instructions on how to remove...

Written By: Joe Murphy



INTRODUCTION

This guide gives instructions on how to remove the Right-Side Motherboard (Yellow) of the Toshiba SD-K740 DVD player, which controls the buttons and power function.



TOOLS:

- [Phillips #2 Screwdriver](#) (1)
-

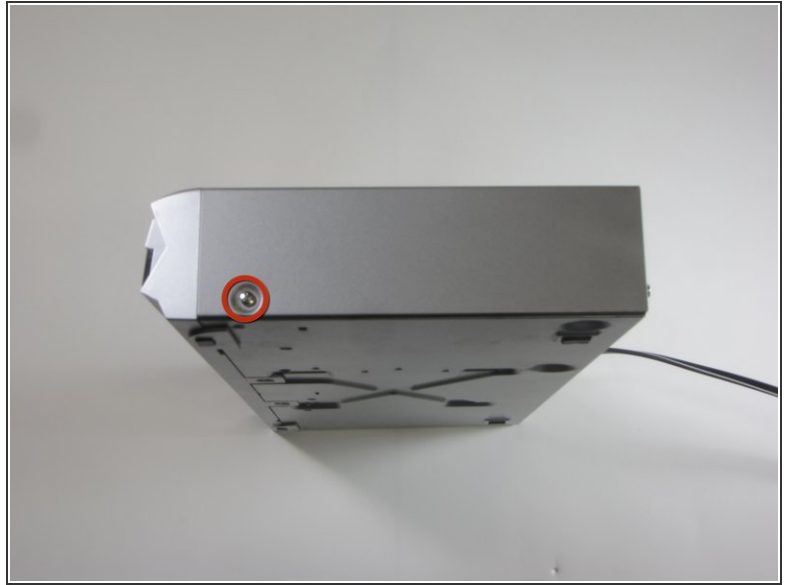
Step 1 — Top Panel



⚠ Unplug the DVD player before beginning.

- Remove the three 7.7 mm screws from the back panel using a Phillips #0 screwdriver.

Step 2



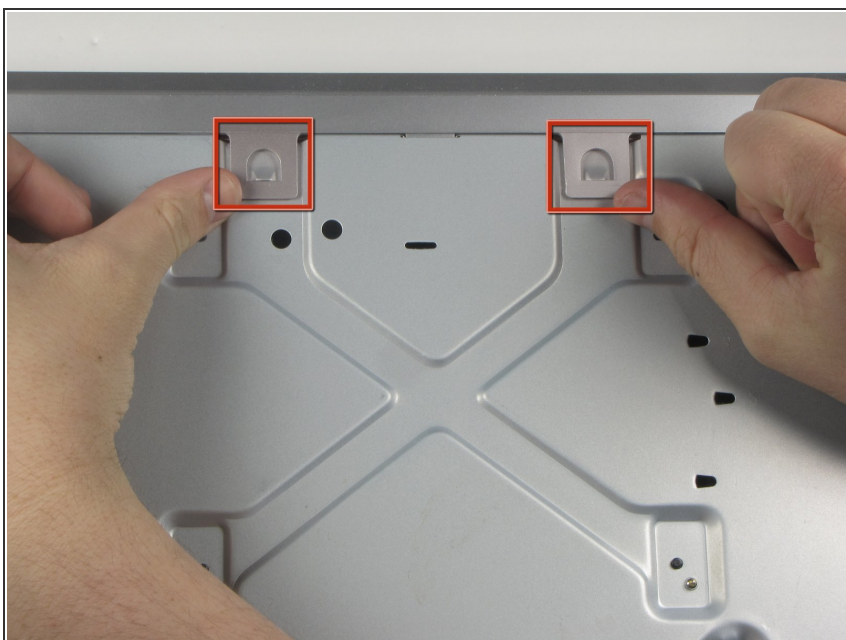
- Turn the DVD player on its side.
- Remove the 7.7 mm screw.
- Flip the DVD player onto its other side.
- Remove the 7.7 mm screw.

Step 3



- Flip the DVD player over onto its front face.
- Remove the back panel by lifting up and pulling it towards yourself.

Step 4 — Front Panel



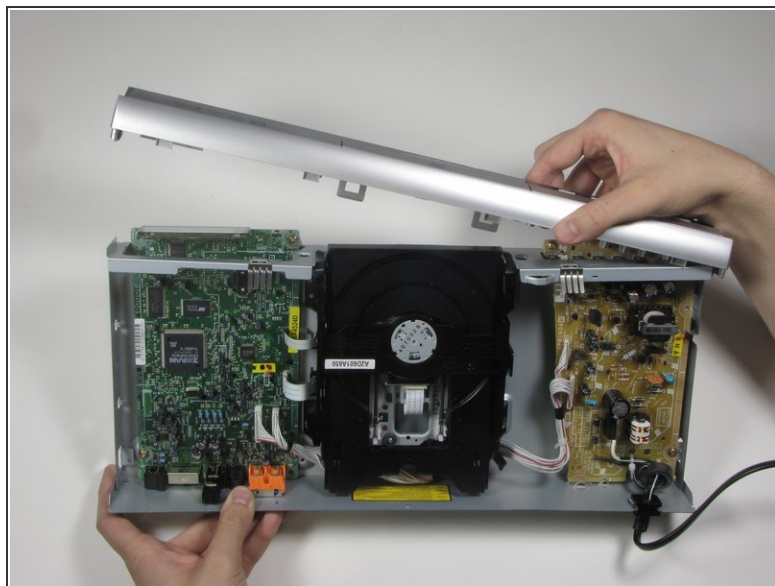
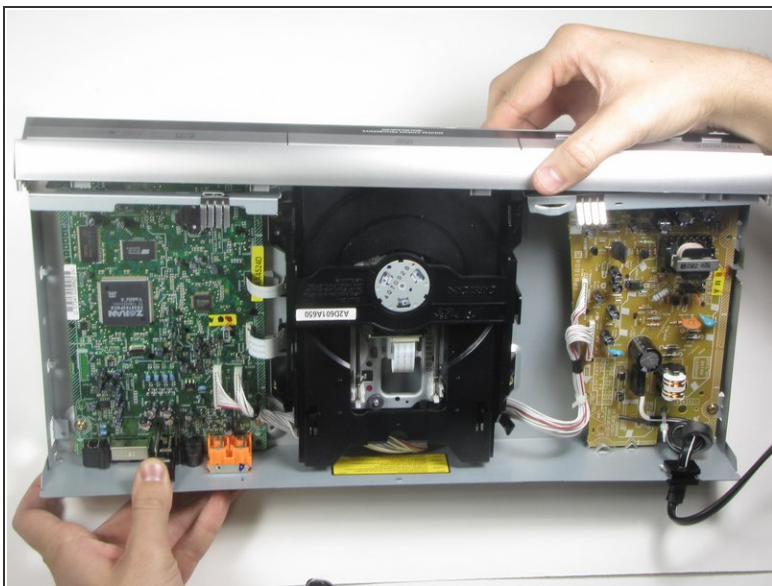
- ① Flip the DVD player so its top is sitting on your working surface.
- Lift and push away the two tabs located in the middle of the player.
- ⚠ The front panel will not detach during this step, so do not force it.

Step 5



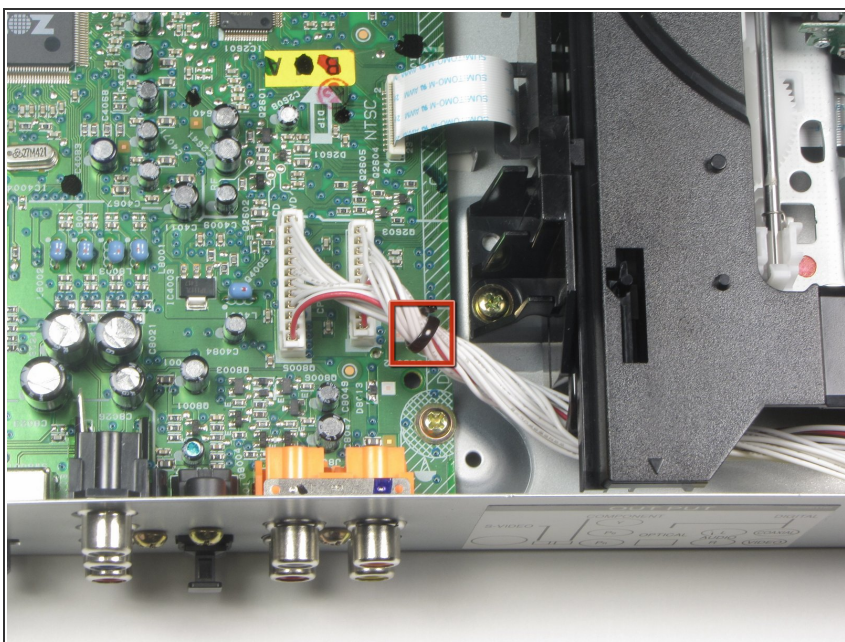
- ❗ Flip the DVD player on its side.
- Lift and slide forward the single tab on the side.
- ⚠ The front panel will not detach during this step, so do not force it.

Step 6



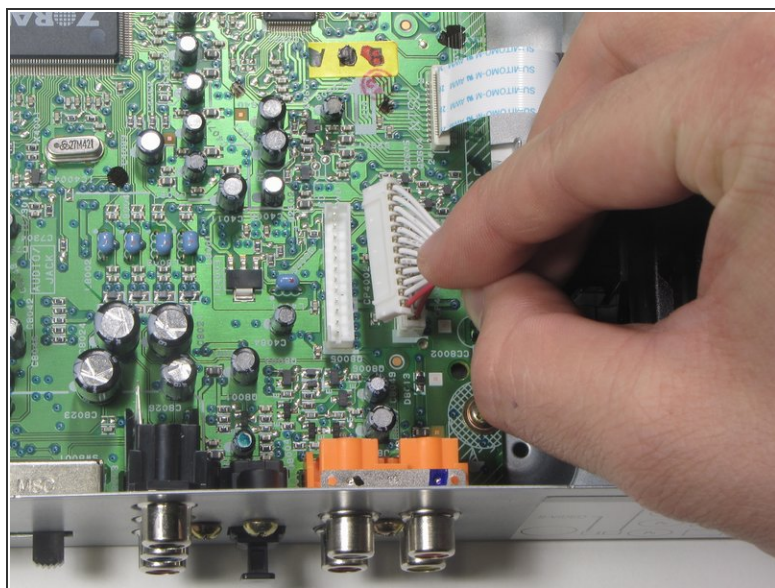
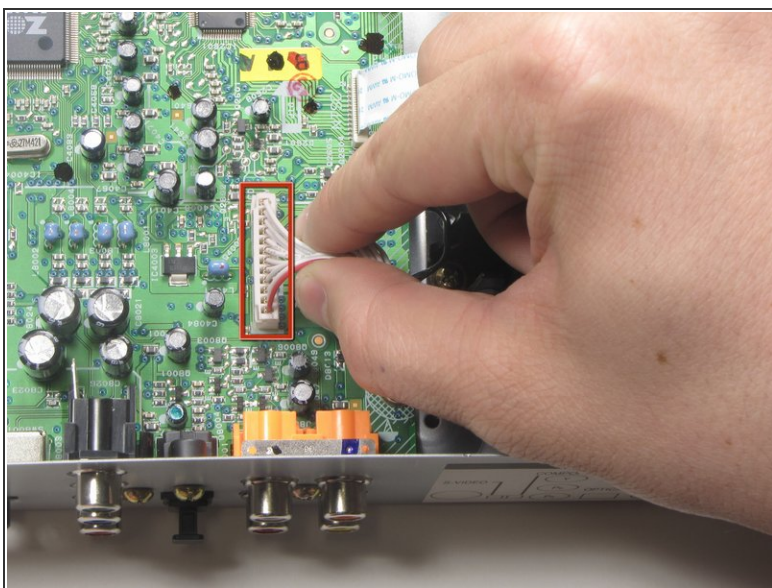
- Grasp the front panel and pull forward to your right to remove it.

Step 7 — Inverter Board



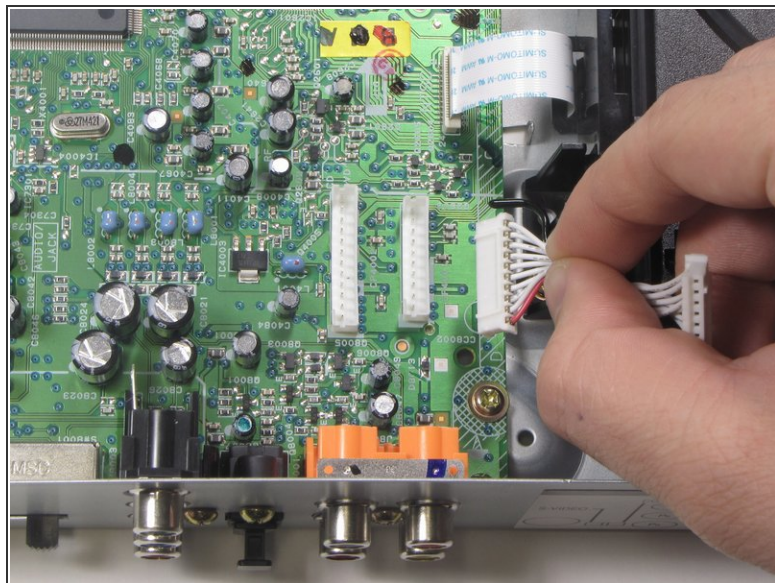
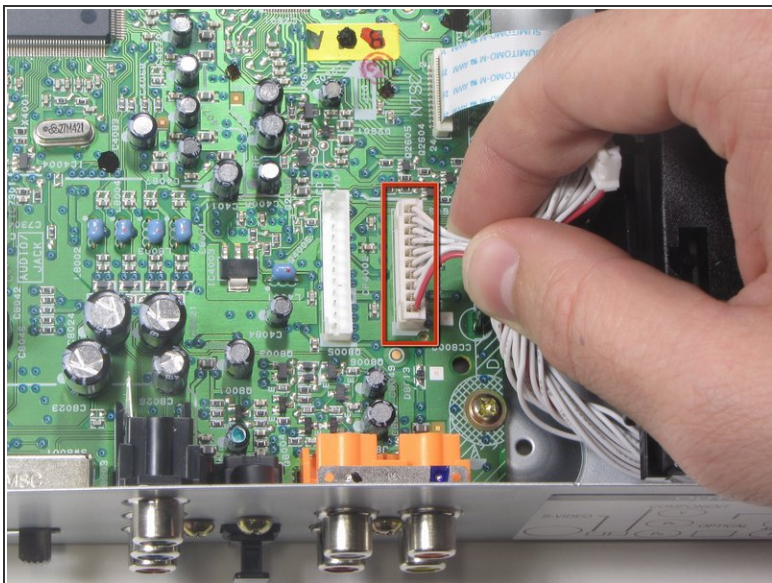
- Remove the black tie holding the two rear ribbon cables together by untwisting it.

Step 8



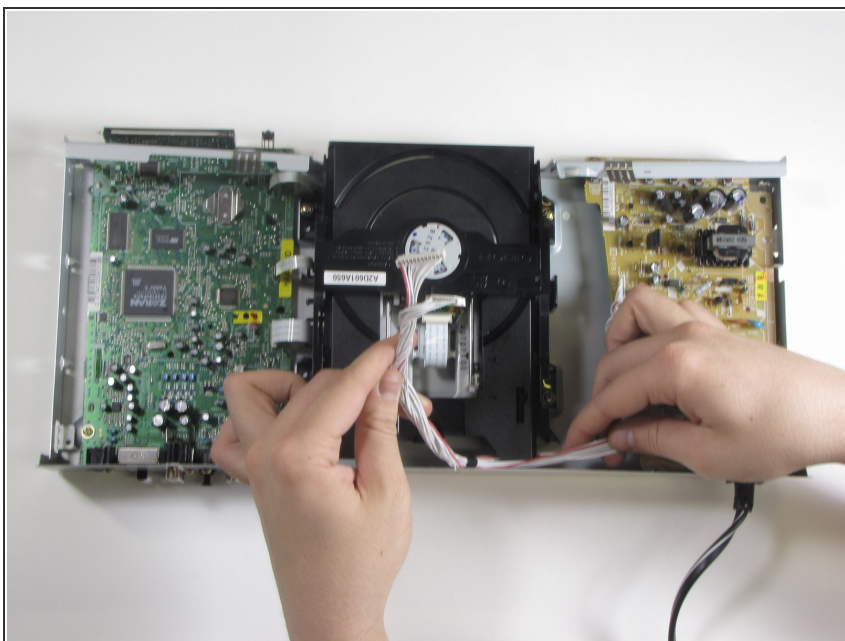
- Remove the first of two ribbon cables connected to the motherboard by pulling vertically.

Step 9



- Remove the second of two ribbon cables connected to the motherboard by pulling vertically.

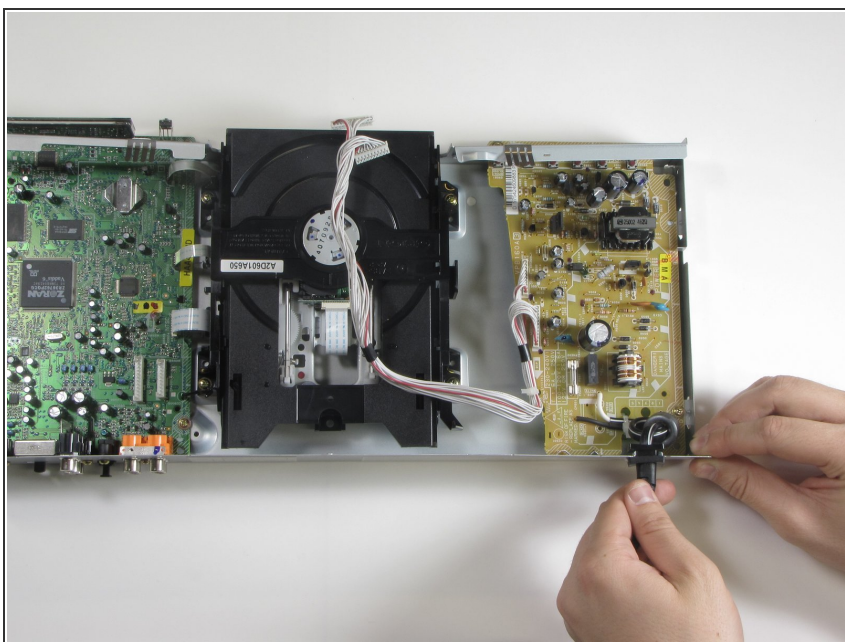
Step 10



- Pull the two cables to the right to disentangle from the disc drive.

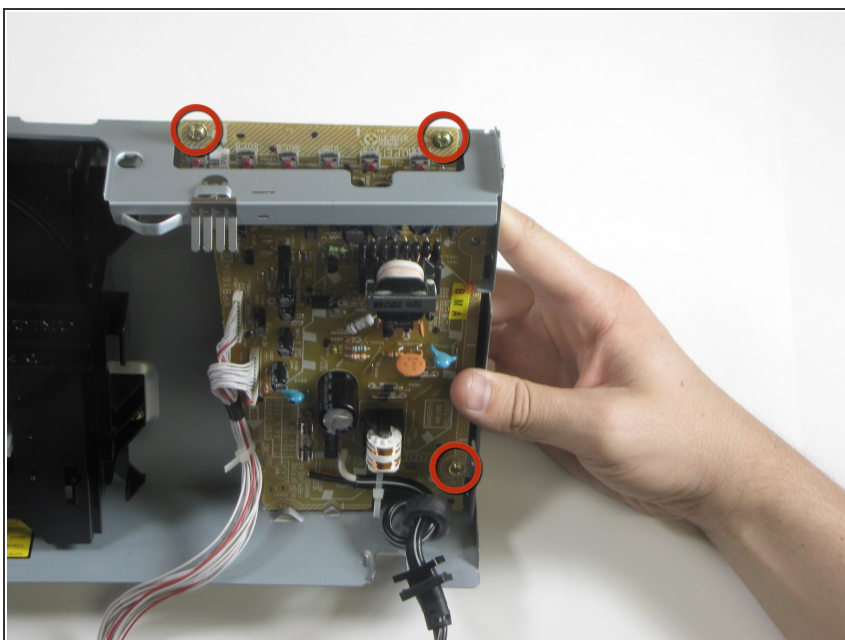
⚠ Do not tug, pull, or force cable, it should slide out with minimal force.

Step 11



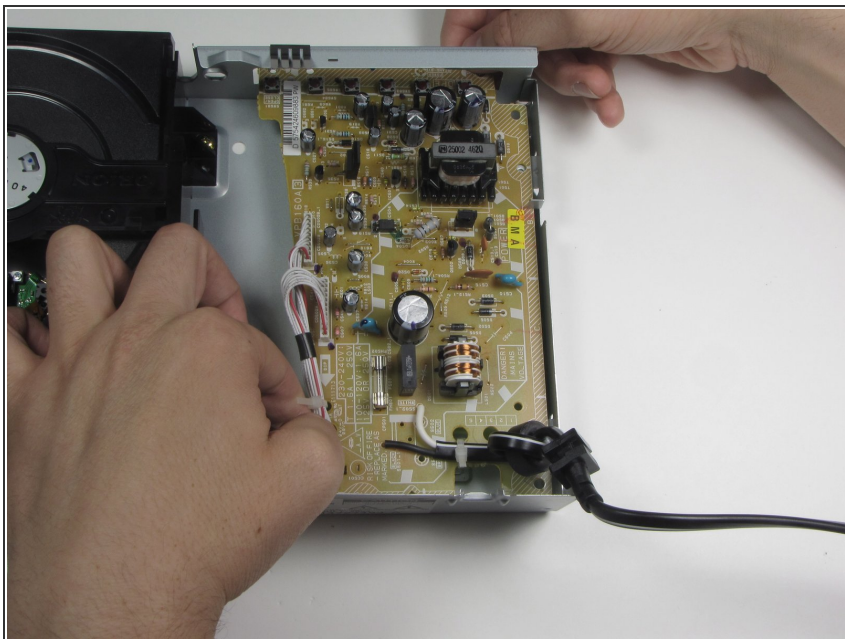
- Pull power cord vertically to detach from the casing.

Step 12



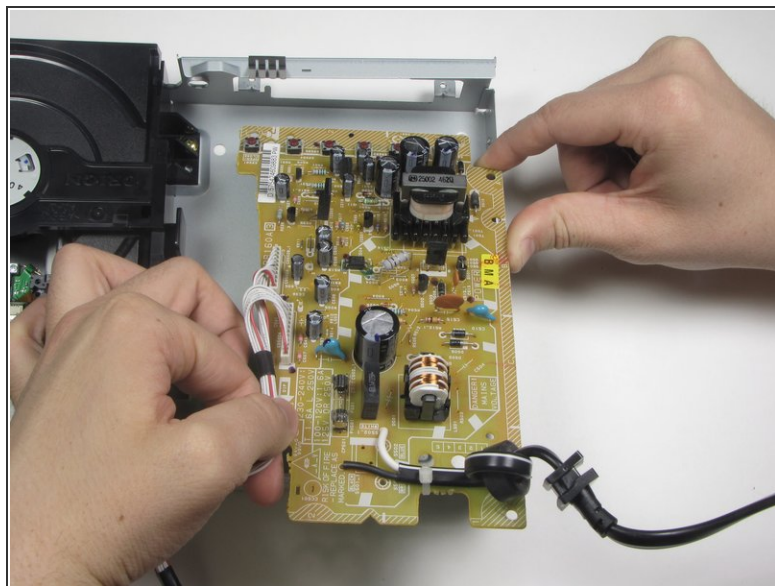
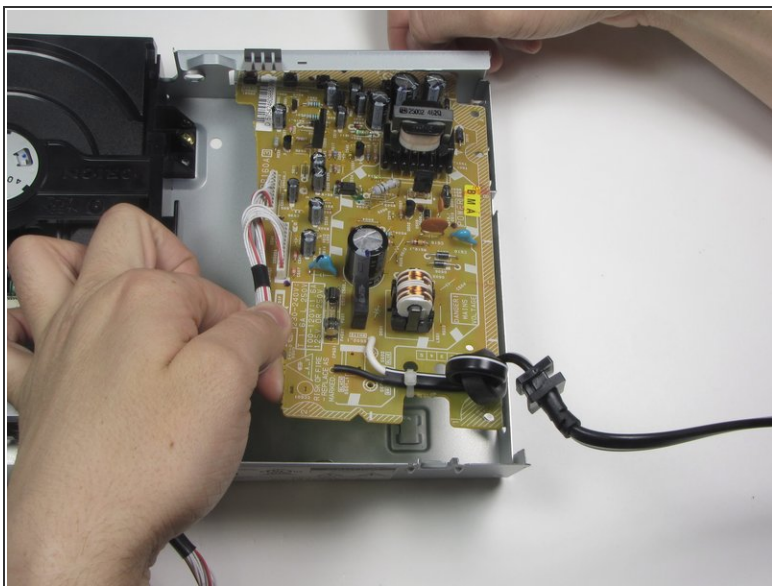
- Remove the three .303 inch screws attaching the inverter board to the casing using a #0 Phillips screwdriver.

Step 13



- Push the inverter board forward and to the left to remove from the holding ledges.

Step 14



- Lift the inverter board from the back end and pull toward you to complete removal.

To reassemble your device, follow these instructions in reverse order.