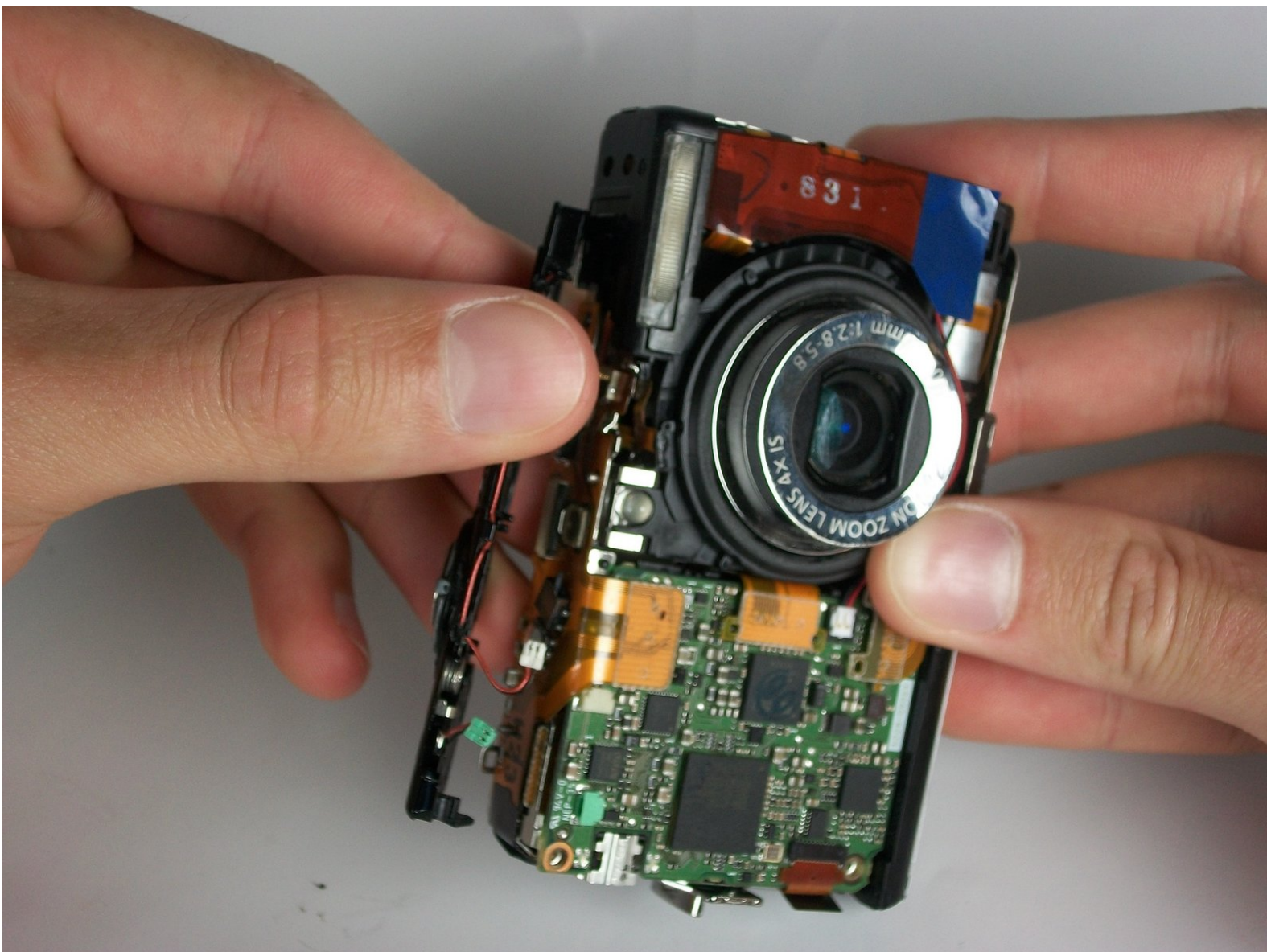




# Canon Powershot SD880 Top Panel Replacement

Written By: Robert Manno





## TOOLS:

- [Phillips #0 Screwdriver](#) (1)
-

## Step 1 — Back Cover



- Remove the two 2.4 mm screws on the side of the camera that are next to the LCD screen using a Phillips #00 screwdriver.
- Remove the two 4.1 mm screws on the other side using a Phillips #00 screwdriver.
  - ⓘ One screw will be located under the rubber USB flap.
- Remove the single 2.6 mm screw from the bottom of the camera using a Phillips #00 screwdriver.
- Slowly pull the back cover off of the camera.

## Step 2 — Top Panel



- Unplug the green and white plugs that connect the top panel to the top of the logic board.
- Dislodge the tab above the lens.
- Dislodge the tab at the back.

To reassemble your device, follow these instructions in reverse order.