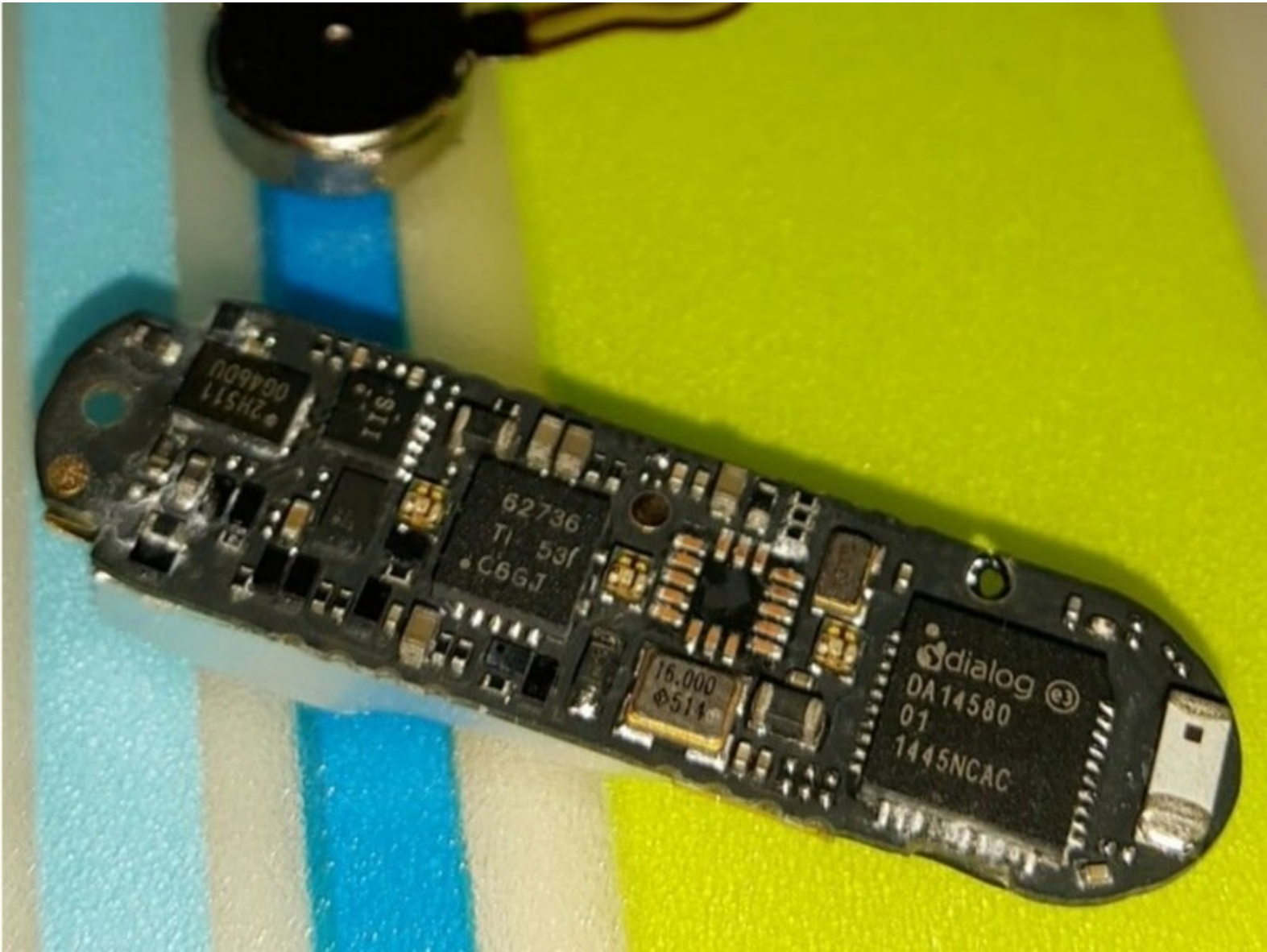




Xiaomi Mi Band Teardown

What is inside Xiaomi Mi Band

Written By: fstab



INTRODUCTION

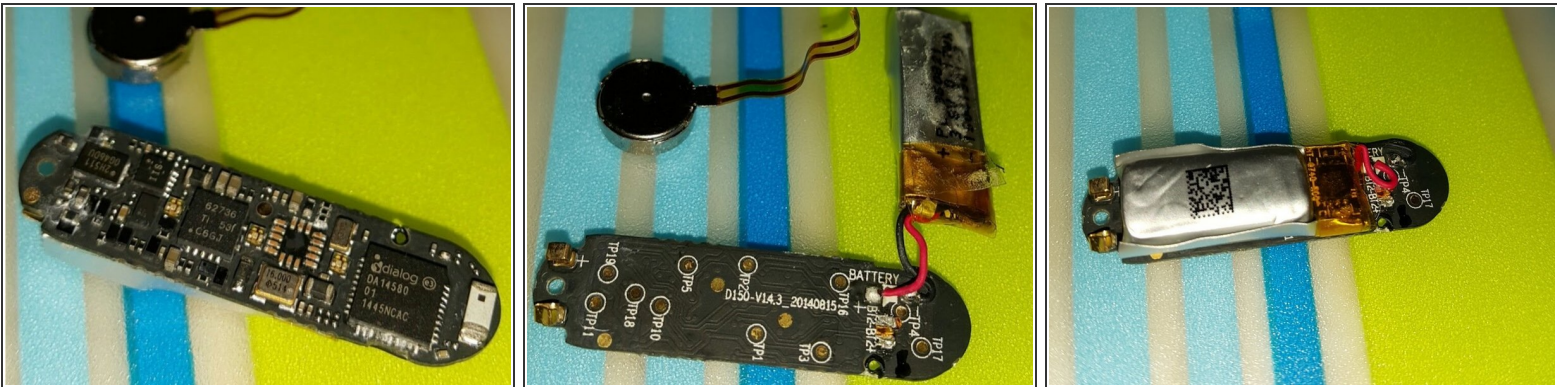
This teardown shows what electronic components are in the Xiaomi Band.



TOOLS:

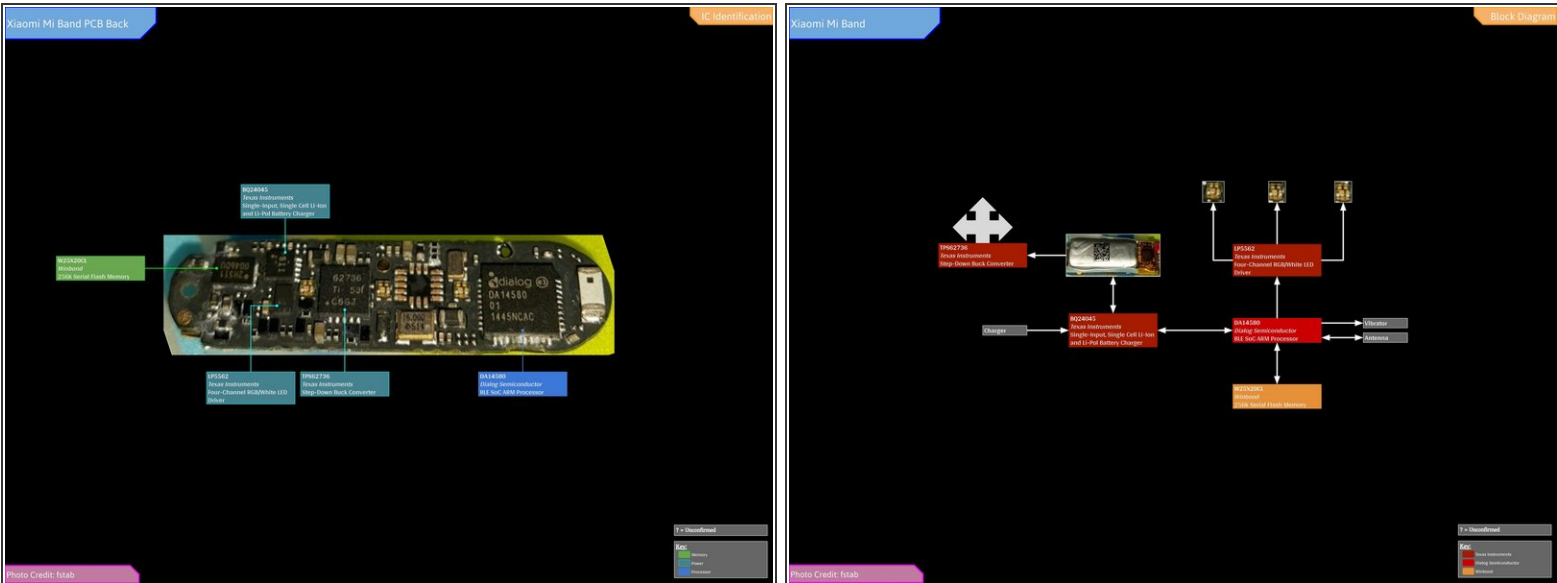
- [Sharp knife](#) (1)
-

Step 1 — Xiaomi Mi Band Teardown



- Inside

Step 2



- Full IC Identification:
- Predicted Block Diagram is on the 2nd image.
- You may need to enlarge it to view the text.

To reassemble your device, follow these instructions in reverse order.