



# Disassembly of Moto E 2

Written By: Kandango

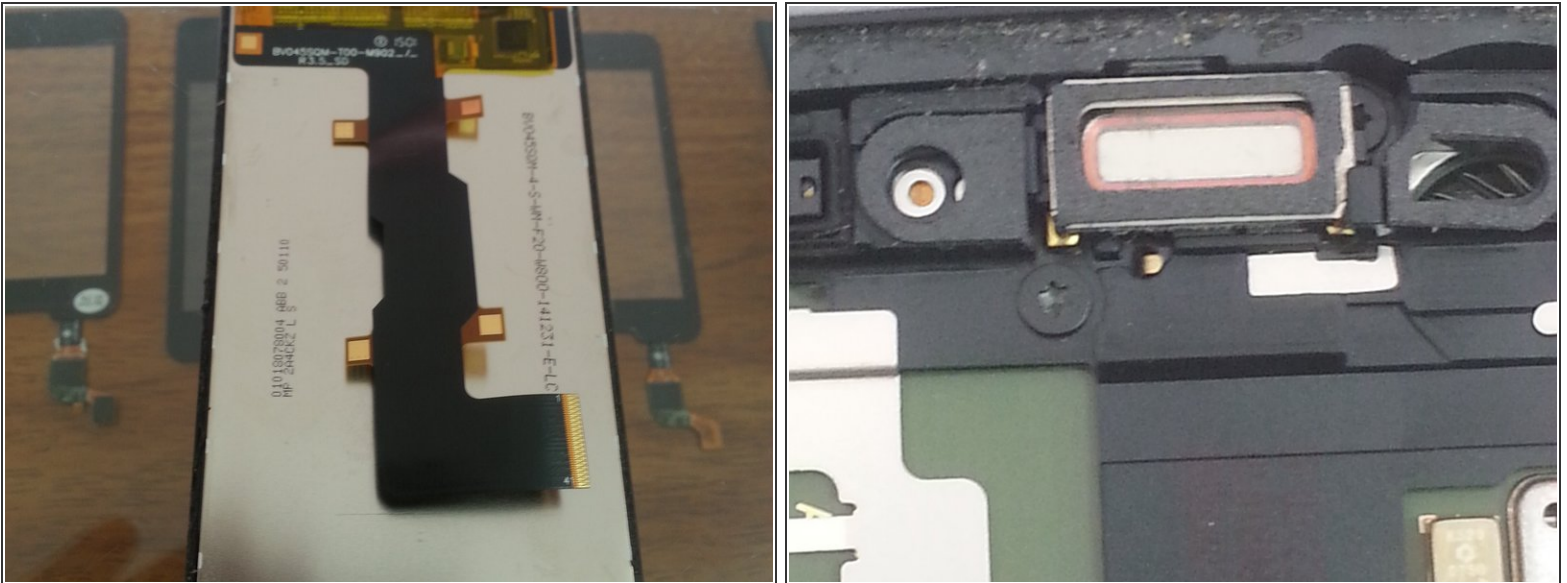


## Step 1 — Disassembly of Moto E 2



- Moto E 2
- You have to warm the LCD to take out the housing, the paradises is to give access to the battery that is under the plate.

## Step 2



- After detaching the LCD the housing has 16 screws that secure the board

**i** Note: there is a screw down the earpiece of the earpiece

Pour remonter votre appareil, suivez ces instructions dans l'ordre inverse.