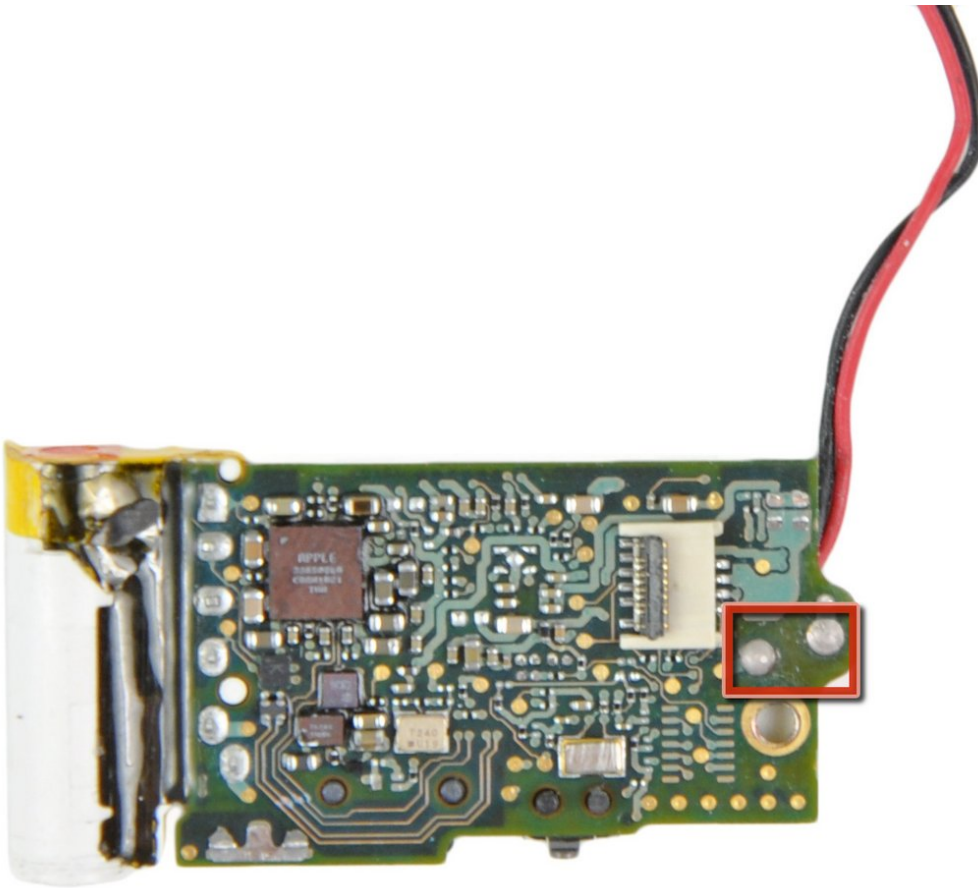




iPod Shuffle 4th Generation Battery Replacement

Replace your 4th generation iPod Shuffle's battery.

Written By: Andrew Bookholt



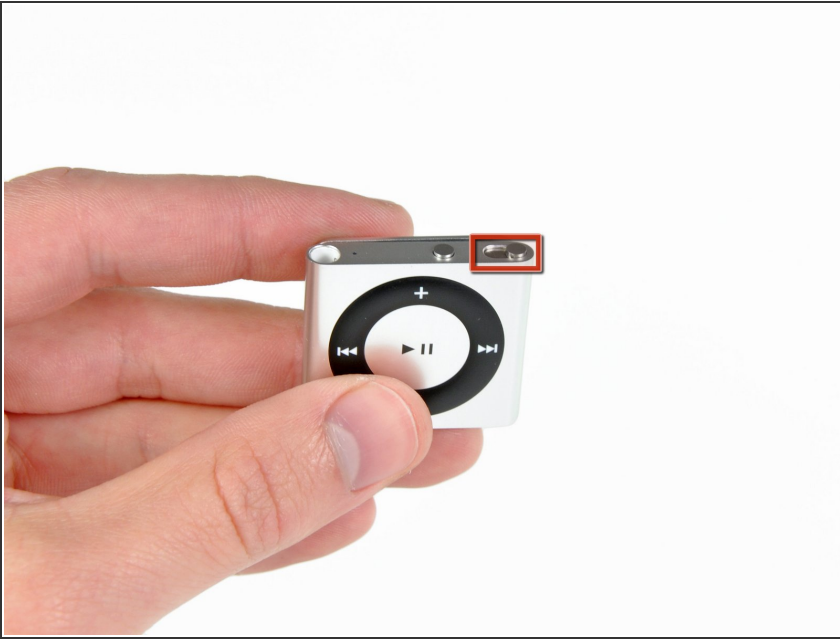
INTRODUCTION


Replacing the battery requires a fine-tipped soldering iron.

TOOLS:

- [Metal Spudger Set](#) (1)
 - [Phillips #00 Screwdriver](#) (1)
 - [Solder](#) (1)
 - [Soldering Iron](#) (1)
 - [Stainless Steel Probe Set](#) (1)
 - [Tweezers](#) (1)
 - [iFixit Opening Tools](#) (1)
-

Step 1 — Rear Panel



 Accessing the internals of the 4th generation Shuffle is extremely difficult, as the rear panel is both glued to the front case and secured by metal retaining clips. It is highly unlikely that you will be able to remove the rear panel without inflicting cosmetic and/or structural damage.

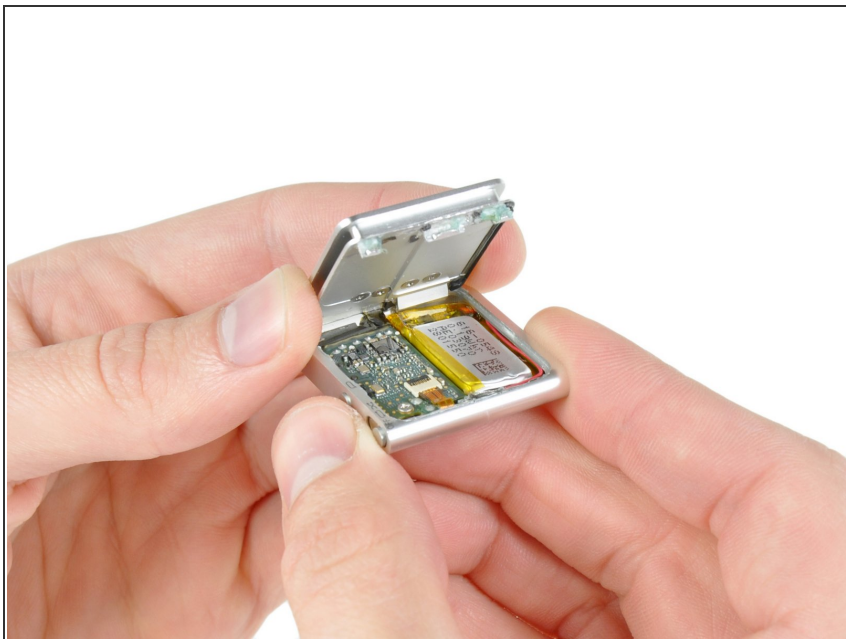
- Before proceeding, be sure your Shuffle is switched off.

Step 2



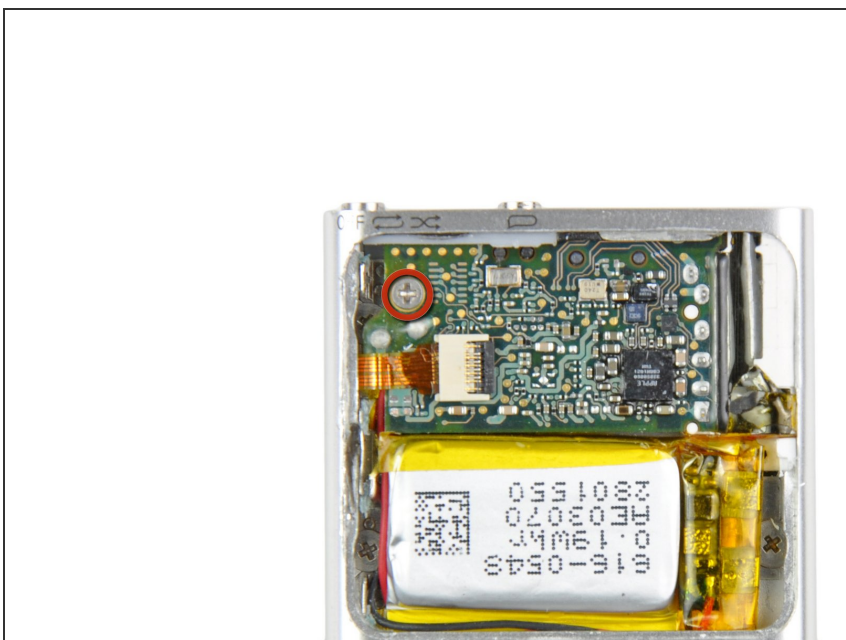
- Use a combination of iPod opening tools and metal spudgers to pry the rear panel away from the Shuffle by the seam nearest the ON/OFF switch.

Step 3



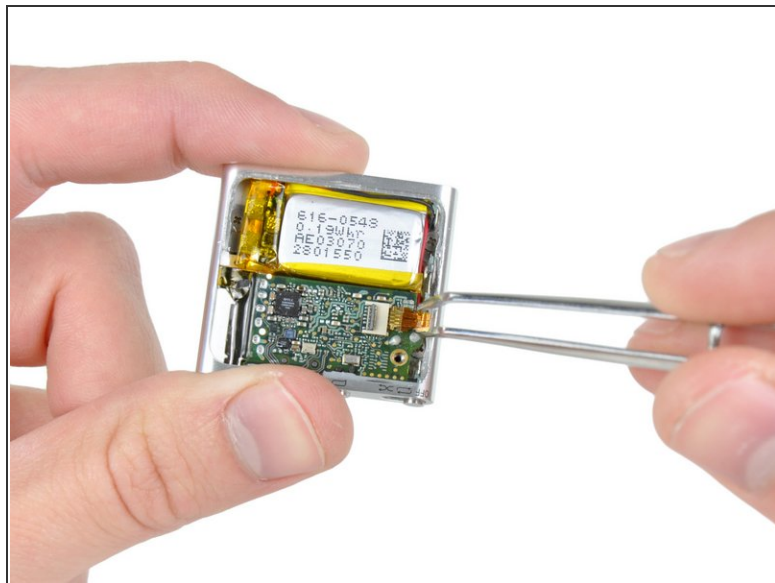
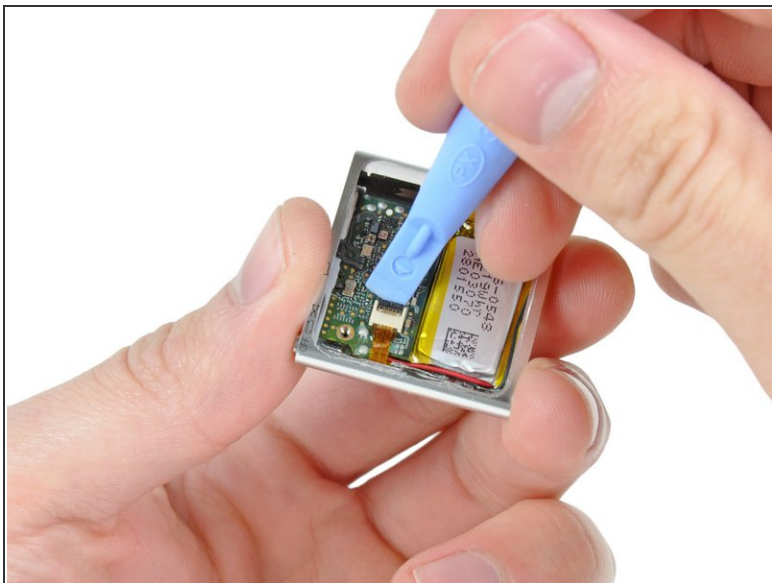
- Remove the rear panel from the Shuffle.

Step 4 — Logic Board Assembly



- ⓘ If present, remove the thin black moisture seal covering the Shuffle's internals.
- Remove the single 2.1 mm Phillips screw securing the logic board to the front case.

Step 5

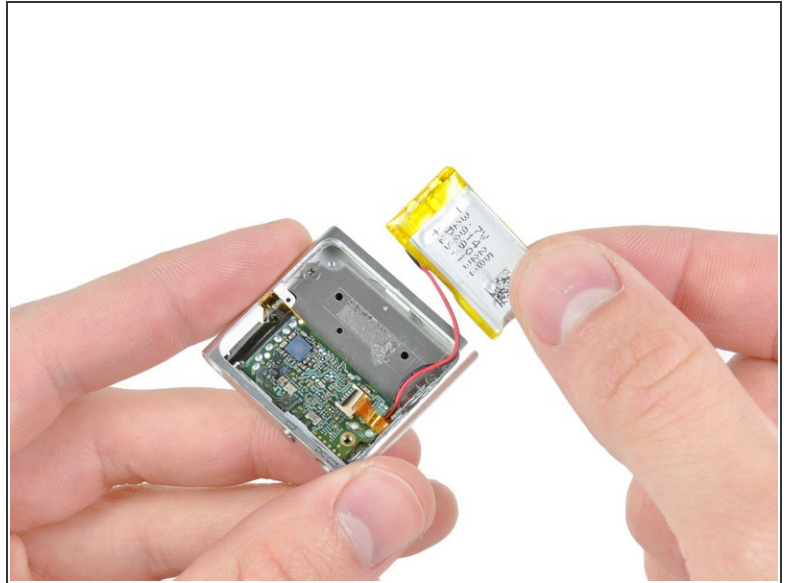
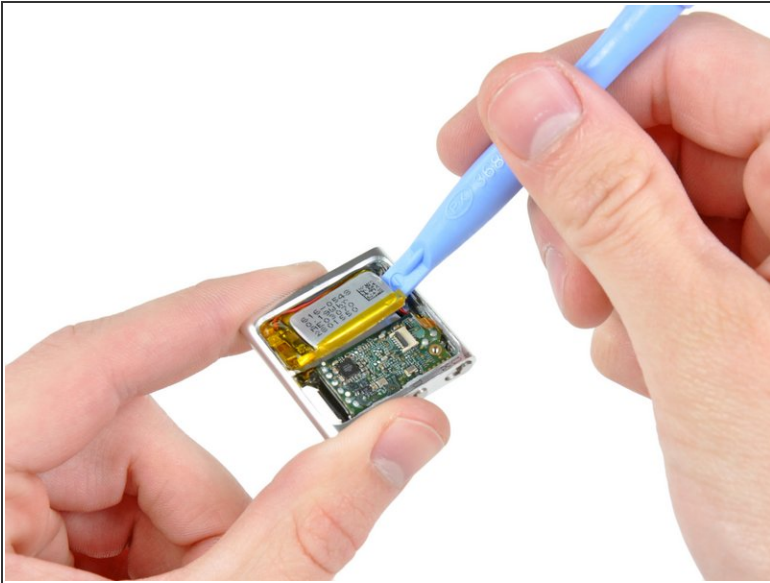


- Use the edge of an iPod opening tool to flip up the retaining flap on the control button cable ZIF socket.

⚠ Be sure you are prying up on the hinged retaining flap, **not** the socket itself.

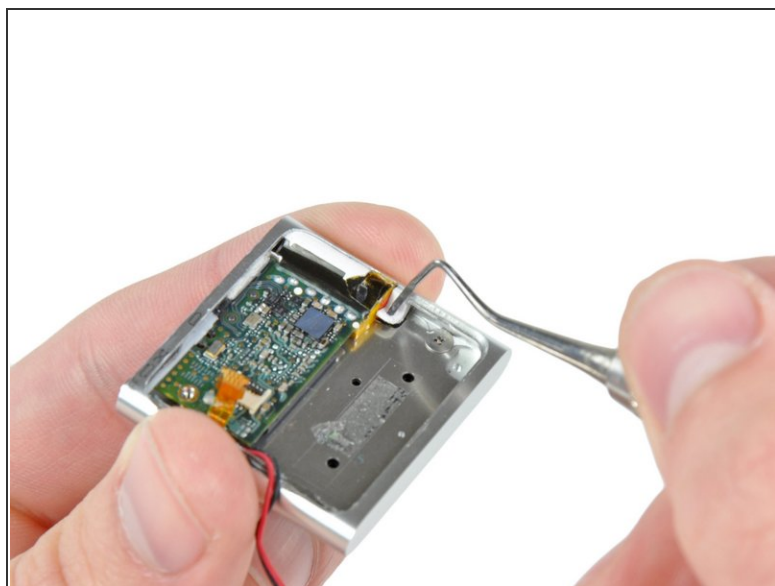
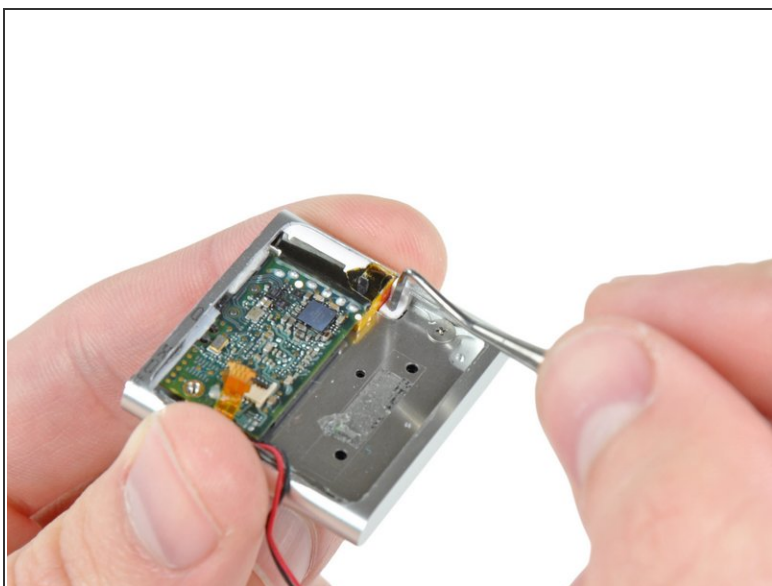
- Use a pair of tweezers to gently pull the control button ribbon cable out of its socket.

Step 6



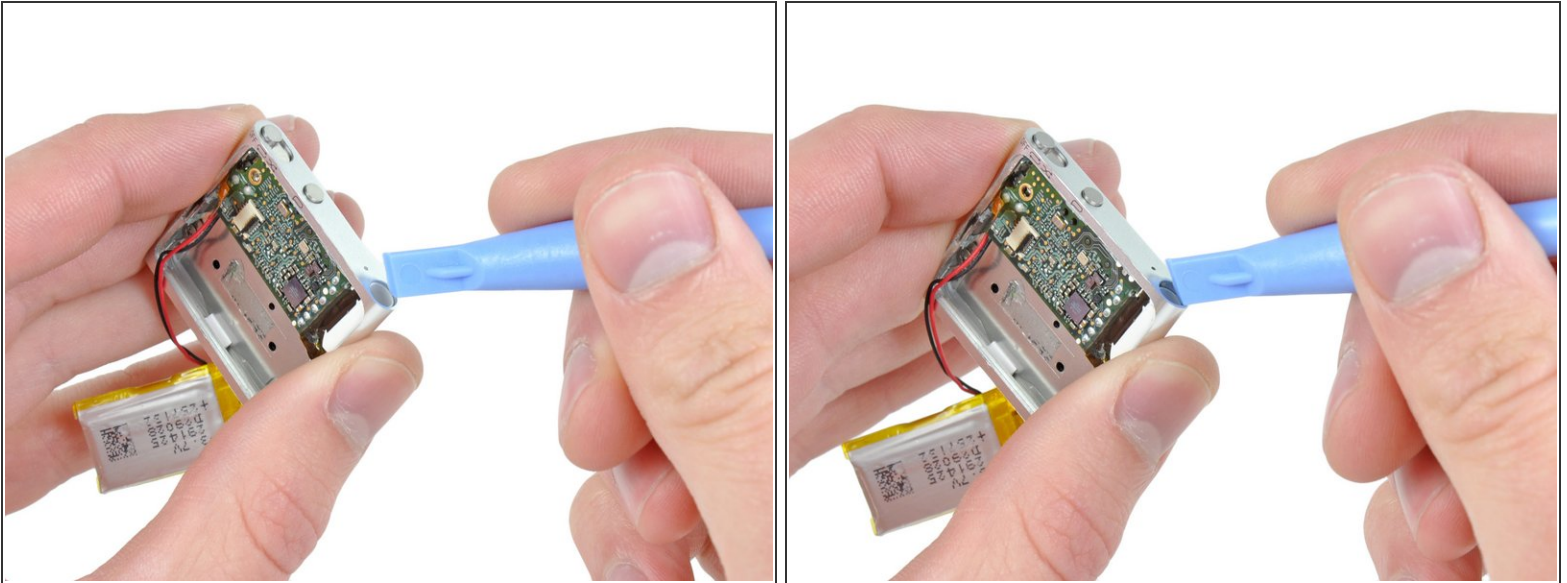
- Use an iPod opening tool to gently pry the battery off the adhesive securing it to the front case.
- Lift the battery out of the front case, being sure not to strain its delicate leads.

Step 7



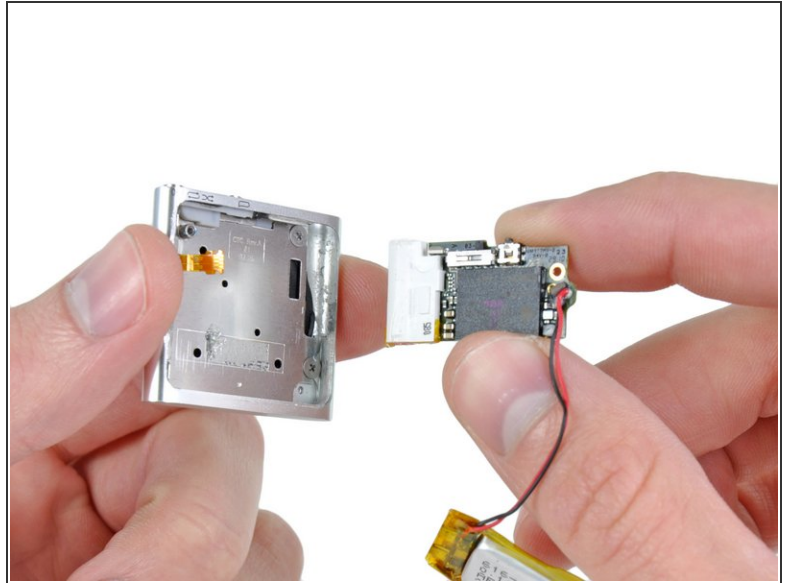
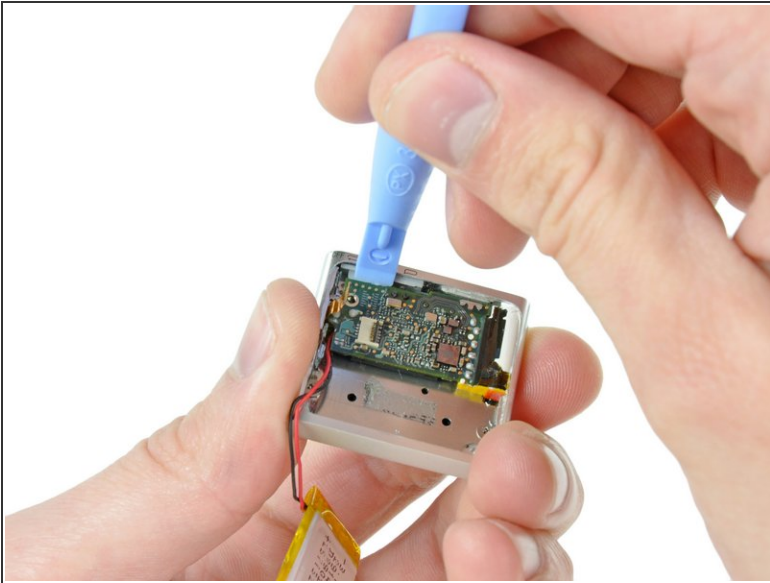
- Insert the tip of a metal probe into the hole molded into the logic board retainer nearest the logic board.
- Pry the retainer first away from the front of the front case, then pull it away from the side of the front case.
- Remove the logic board retainer from the Shuffle.

Step 8



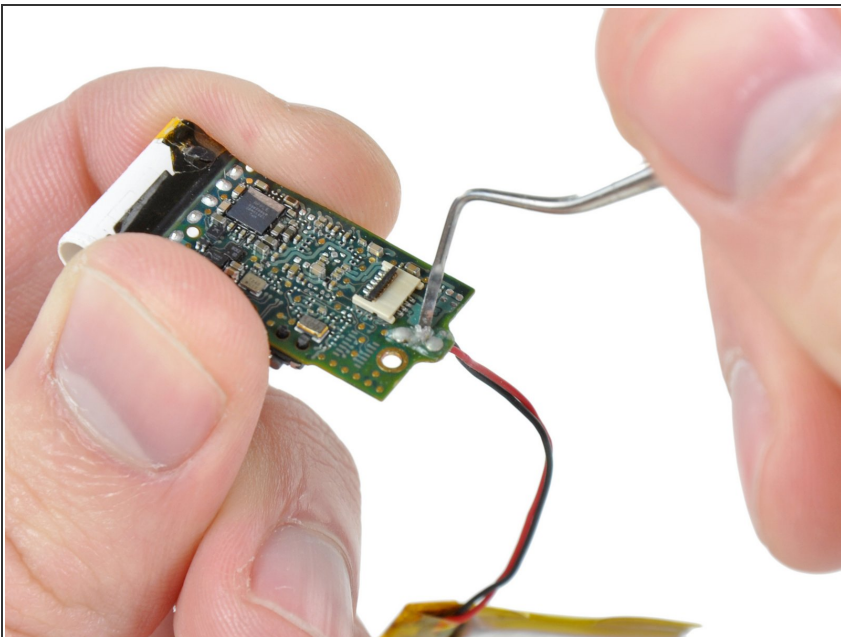
- Use the edge of an iPod opening tool to push the headphone jack down toward the center of the Shuffle.

Step 9



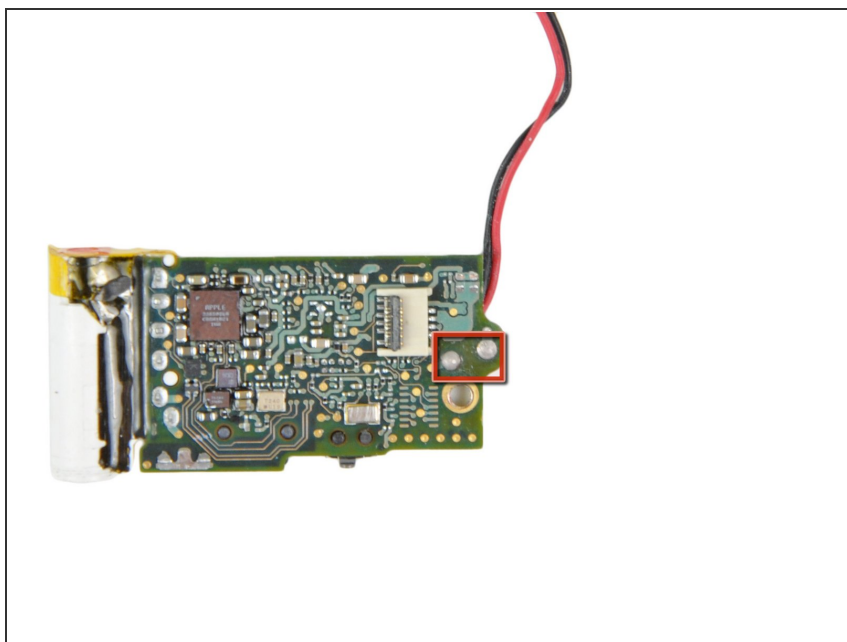
- Continue pushing the logic board down away from the top edge of the Shuffle.
- Pull the logic board out of the front case by the side nearest the ON/OFF button and gently maneuver the headphone jack out of its recess in the front case.
- Remove the logic board assembly from the Shuffle.

Step 10 — Battery



- Use a tip of a sharp metal probe to scrape off the glue covering the battery terminals near the control button ZIF socket.
- ⚠ Be careful not to short the two contacts as you remove the glue.

Step 11



- Use a fine-tipped soldering iron to heat up the battery connections boxed in red one at a time while you pull the corresponding lead away from the other side of the logic board.
- ⓘ If you have never soldered before, we have a [guide](#) that makes it easy.

To reassemble your device, follow these instructions in reverse order.