



# Jawbone MINI JAMBOX Speaker Replacement

This guide will walk you through the steps in replacing the two speakers that produce the sound for the Jawbone MINI JAMBOX.

Written By: Liam McDonnell



---

## INTRODUCTION

The two speakers in the Jawbone MINI JAMBOX are what provide the sound. Excessive use of the speakers can lead to them becoming damaged, and the device becoming unusable.

---

### TOOLS:

- [Metal Spudger](#) (1)
  - [T6 Torx Screwdriver](#) (1)
  - [Soldering Iron](#) (1)
-

## Step 1 — Outer Case



- Using the standard metal spudger, begin by prying at the bottom of the plain rubber end cap (the end without the USB or auxiliary input).

## Step 2



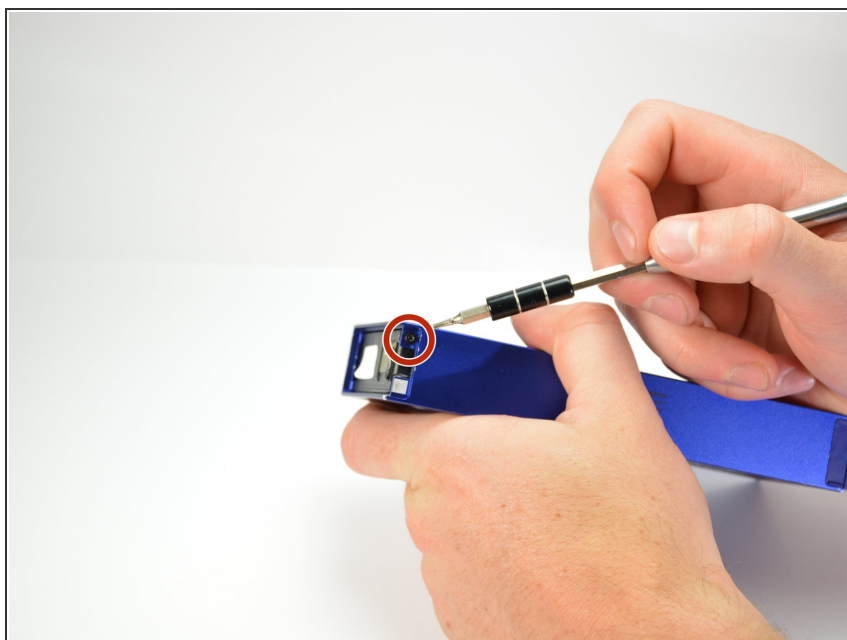
- Continue prying around the end panel, prying at different points until the entire panel is out of its seating.
- Carefully remove the end panel.
- ⓘ The tabs which connect the panel are on the short sides.
- ⚠ **WARNING:** you will likely cause cosmetic damage to the end cap.

### Step 3



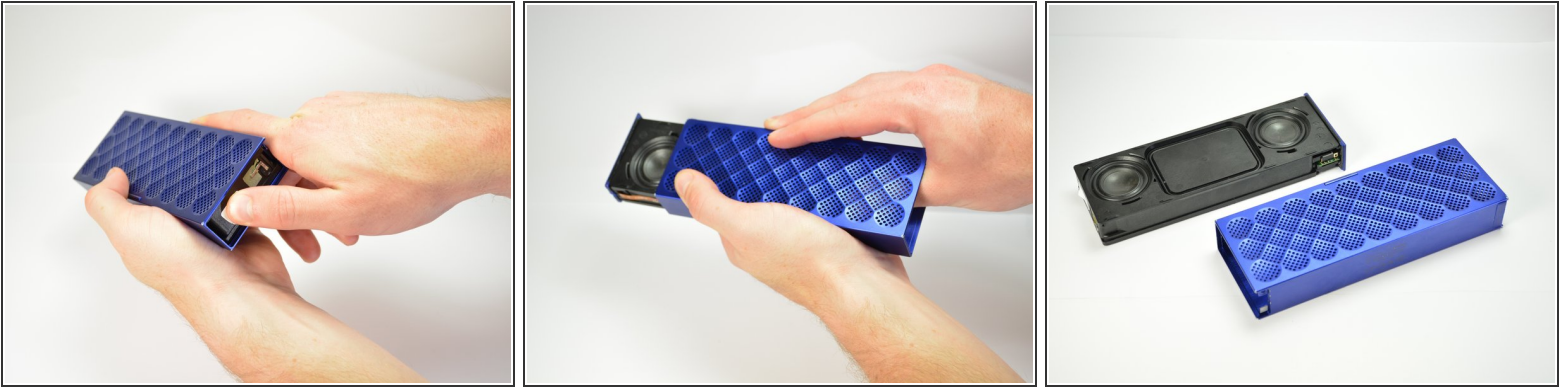
- Slide out the rubber foot located on the bottom of the case.

### Step 4



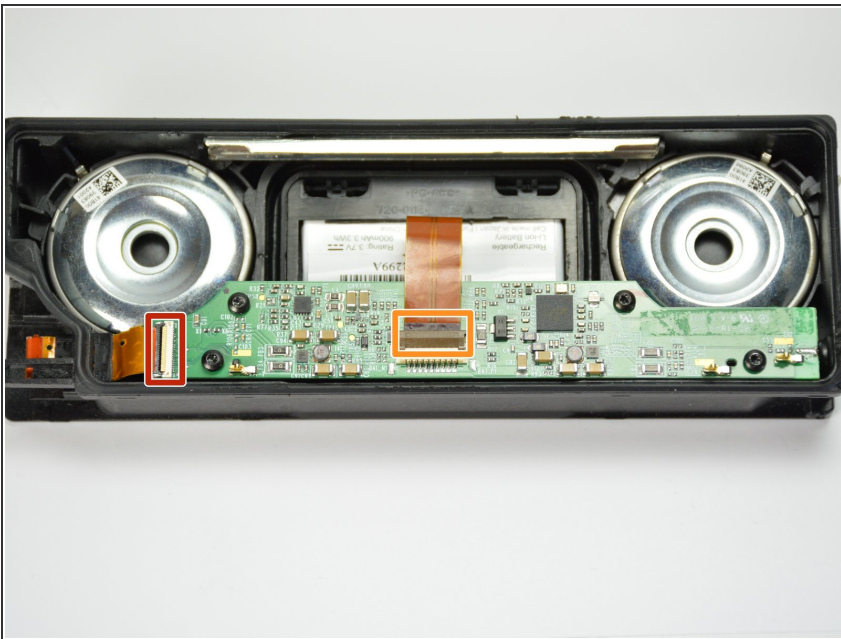
- Using a T6 bit, remove the flat topped 5mm screw located on the bottom of the casing, underneath the rubber foot.
- ★ This is the only flat topped screw in the speaker, so keep track of which one it is.

## Step 5



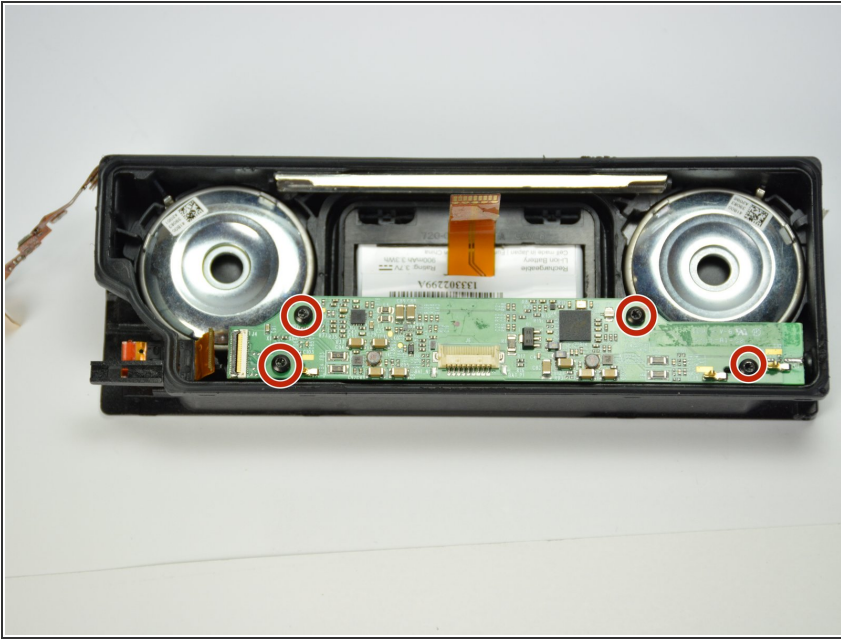
- Push against the side without end cap to slide the internal components out of the case.
- While holding the metal outset casing with one hand, press on the black inner plastic casing with your thumb.
- ❗ It will be very difficult the first time. There is a rubber seal on the outside of the plastic inner case that creates a lot of friction with the metal outer case.

## Step 6 — Motherboard



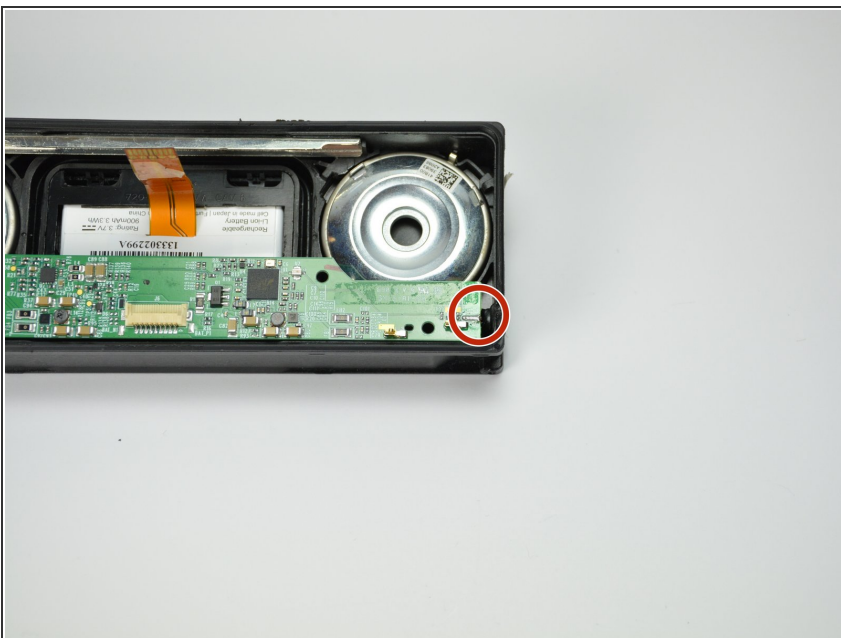
- Remove all connecting ribbons from the motherboard.
- One ZIF or "zero insertion force" ribbon connecting at the side.
- One standard ribbon connector in the middle (Note: this ZIF ribbon is lightly glued to the surface).

## Step 7



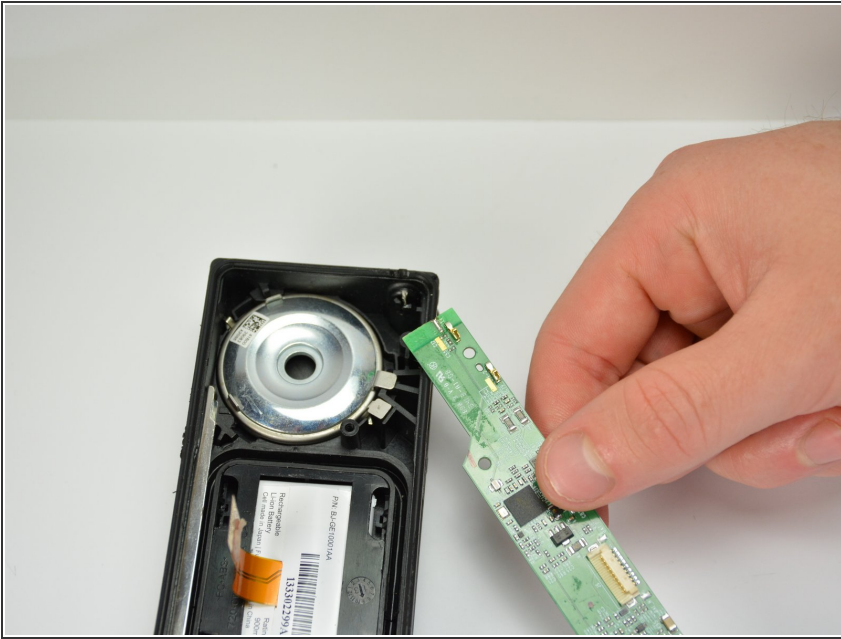
- Unscrew all four 5mm T6 screws holding the motherboard to the plastic case.
- ⓘ Unlike the flat top screw holding the metal housing, these screws are roundtop.

## Step 8



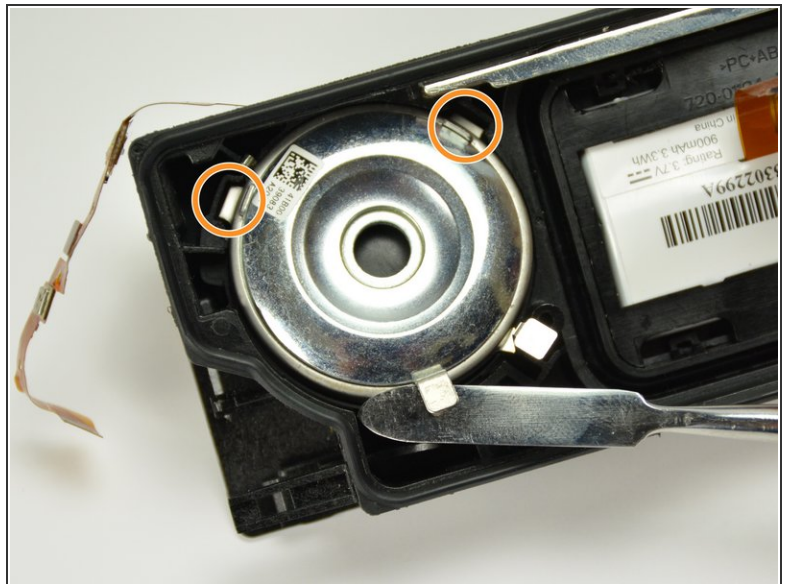
- Desolder the grounding plug from the motherboard.
  - Make sure your soldering iron is tinned and carefully touch the tip of your iron to the grounding lug. Allow the the solder to liquify. While liquified, lift the motherboard off the grounding lug.
- ⚠ **WARNING:** Do not allow the solder to spill over and bridge any connection on the motherboard.
- ⓘ New to soldering? Look at iFixit's soldering guide [here](#).

## Step 9



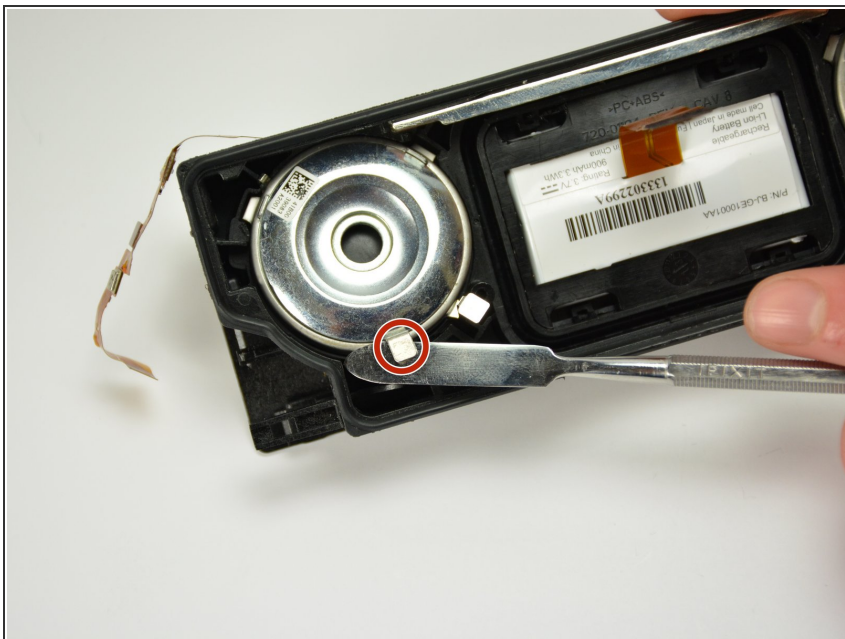
- Carefully lift the motherboard out of the plastic housing.

## Step 10 — Speaker



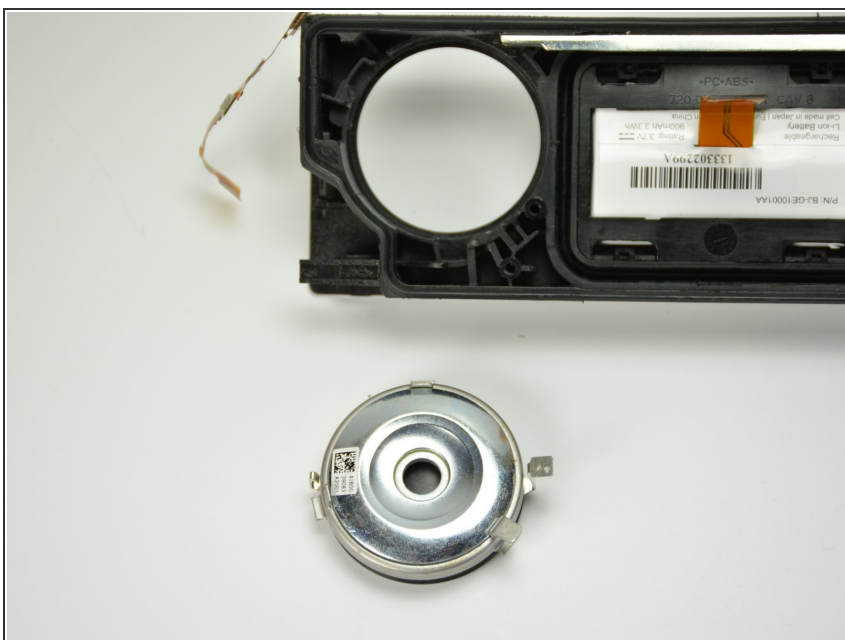
- In order to remove the speakers, you must rotate them. Rotate the circled tabs away from their adjacent tabs.
- Once the speakers are completely rotated, you should see new tabs rotate into sight (see the orange marks).

## Step 11



- Carefully lift the speaker out of the plastic casing using the rotated metal tabs.

## Step 12



- Replace the blown speaker with a new one and reassemble the JAMBOX.

To reassemble your device, follow these instructions in reverse order.