



# Philips Sonicare FlexCare Spring Replacement

This guide will help you replace the spring in your Philips Sonicare FlexCare toothbrush.

Written By: Joanna Moraza



---

## INTRODUCTION

This guide will help you replace the spring in your Philips Sonicare FlexCare toothbrush.

---



### TOOLS:

- [Metal Spudger](#) (1)
  - [Spudger](#) (1)
-

## Step 1 — Spring



- Pull the brush head away from the handle to remove it.

## Step 2



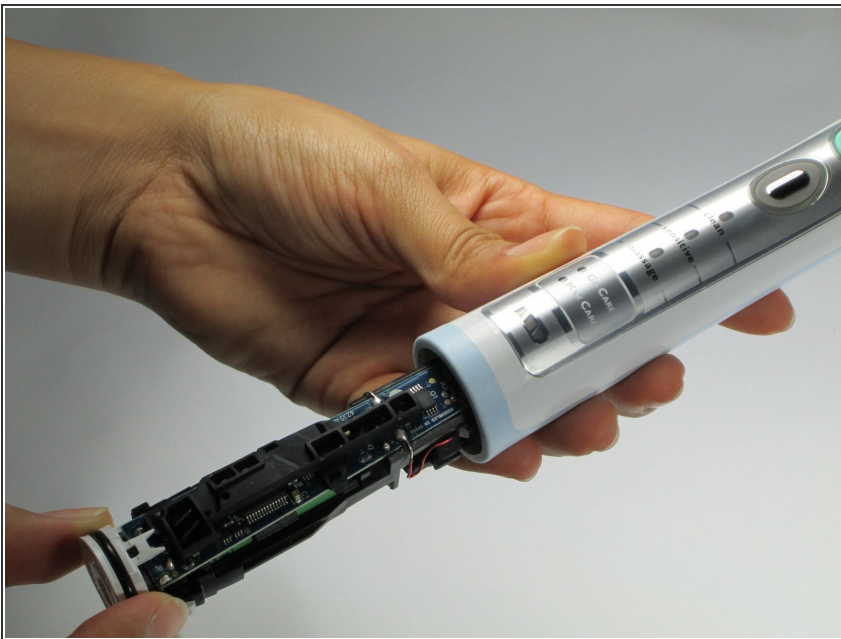
- Push the flat edge of a nylon or metal spudger between the seal and the toothbrush body and pry it up. Do this on each side until the seal is partially sticking out on all sides.

### Step 3



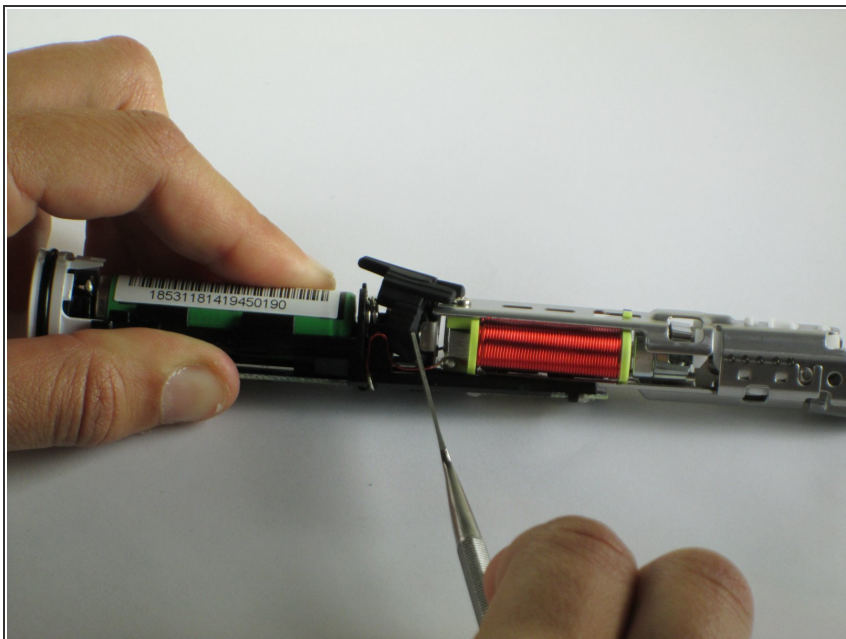
- Apply pressure to the shaft by pressing it against a firm and flat surface. Continue to apply pressure until the interior electronics are exposed.

### Step 4



- Grab the circular, plastic base with the o-ring and pull it outward.

## Step 5



- Pull off the black rubber ring with a metal or nylon spudger until it clears the metal piece that holds it in place. Pull the ring out.

## Step 6



- Remove the spring from the rubber ring and replace it with the new spring.

To reassemble your device, follow these instructions in reverse order.