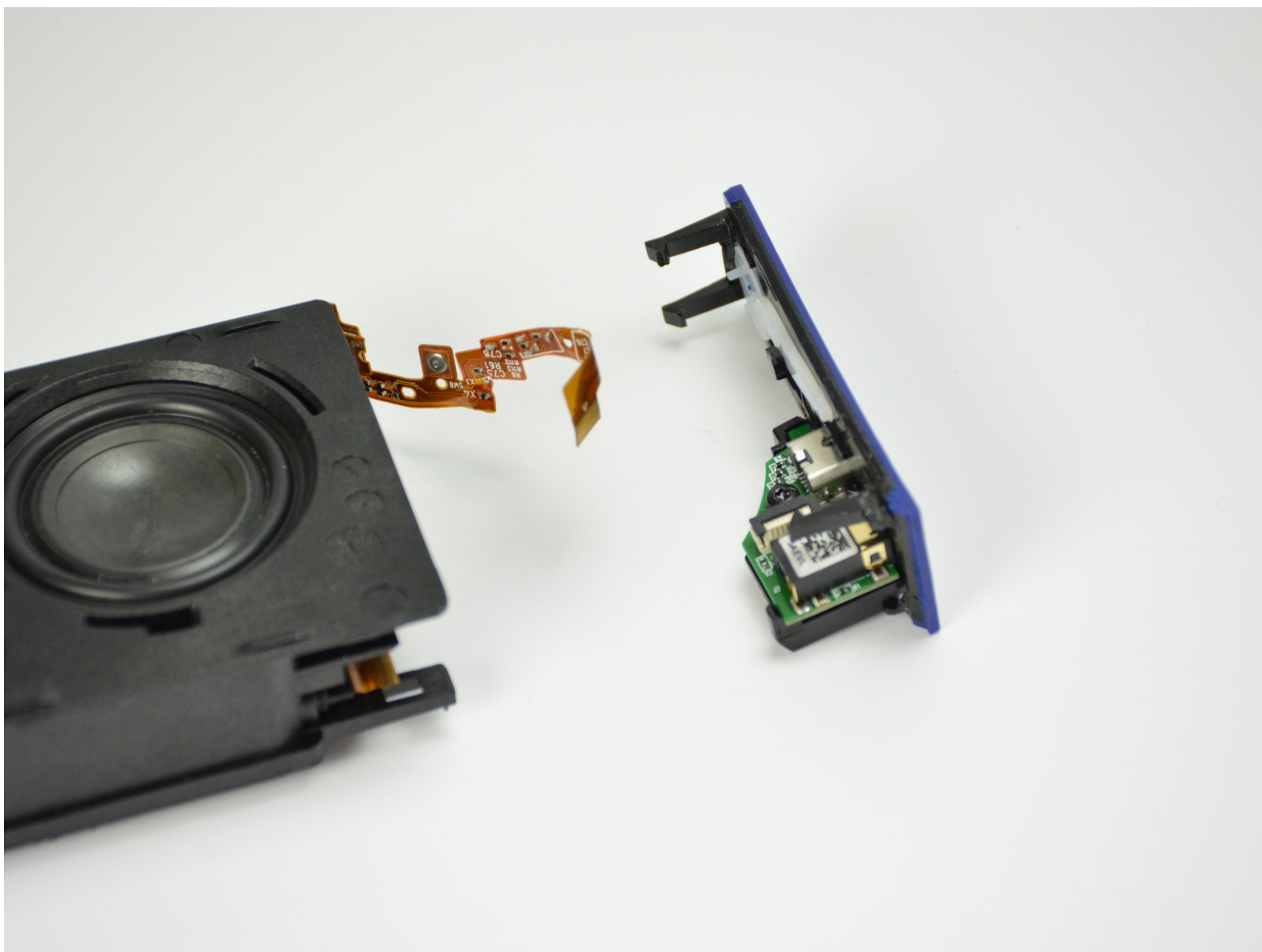




USB/Auxiliary Port

This guide details how to replace a defective USB or Auxiliary port. This can help solve connection problems or the Auxiliary port overriding the bluetooth playback.

Written By: Noah Sadler





TOOLS:

- [Metal Spudger](#) (1)
 - [T6 Torx Screwdriver](#) (1)
-

Step 1 — Outer Case



- Using the standard metal spudger, begin by prying at the bottom of the plain rubber end cap (the end without the USB or auxiliary input).

Step 2



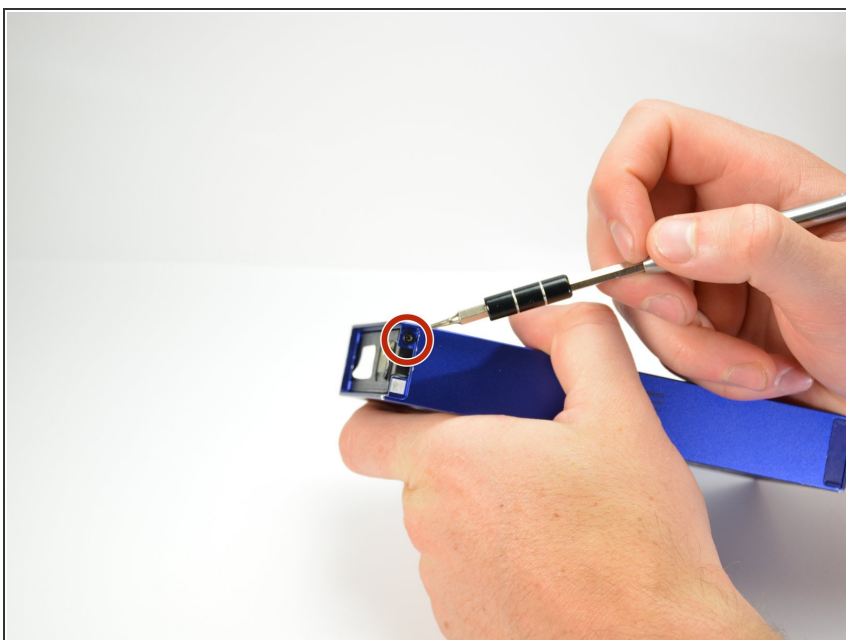
- Continue prying around the end panel, prying at different points until the entire panel is out of its seating.
- Carefully remove the end panel.
- ⓘ The tabs which connect the panel are on the short sides.
- ⚠ **WARNING:** you will likely cause cosmetic damage to the end cap.

Step 3



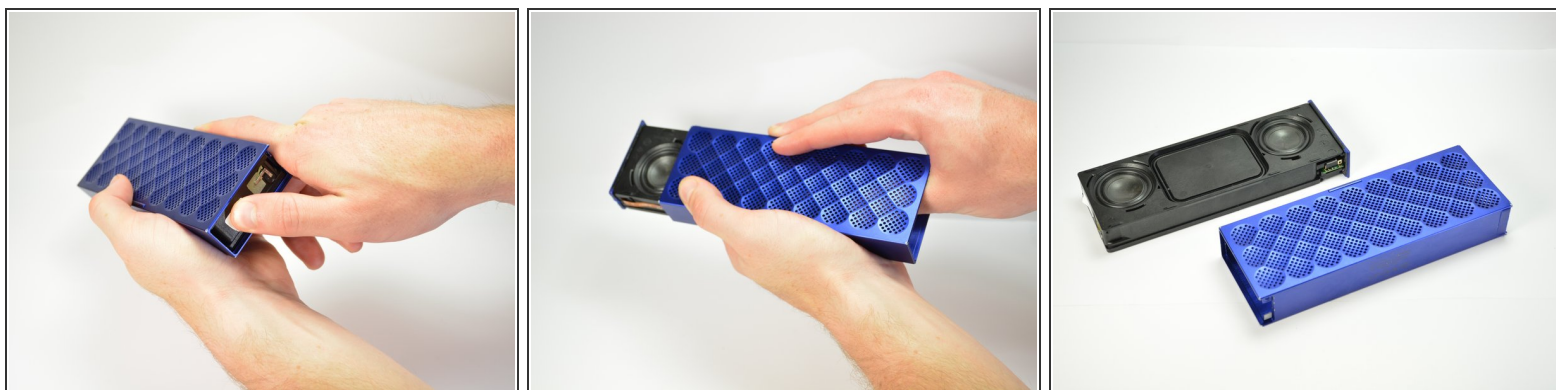
- Slide out the rubber foot located on the bottom of the case.

Step 4



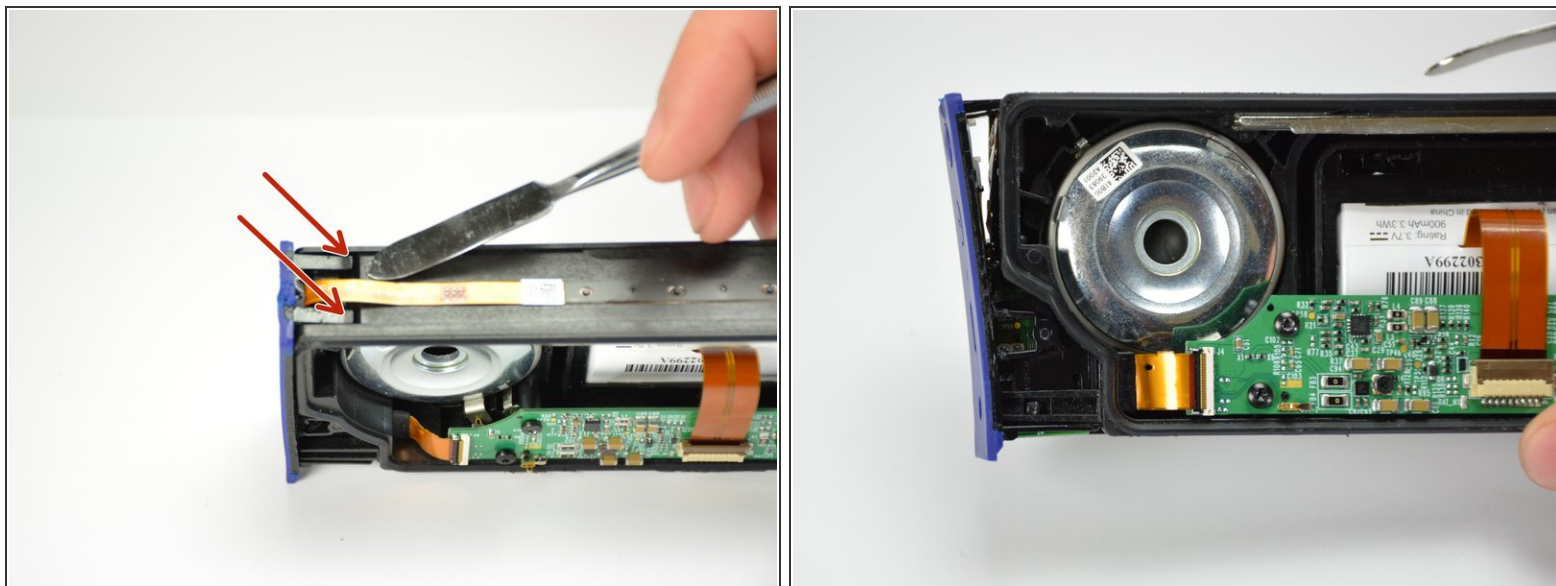
- Using a T6 bit, remove the flat topped 5mm screw located on the bottom of the casing, underneath the rubber foot.
- ★ This is the only flat topped screw in the speaker, so keep track of which one it is.

Step 5



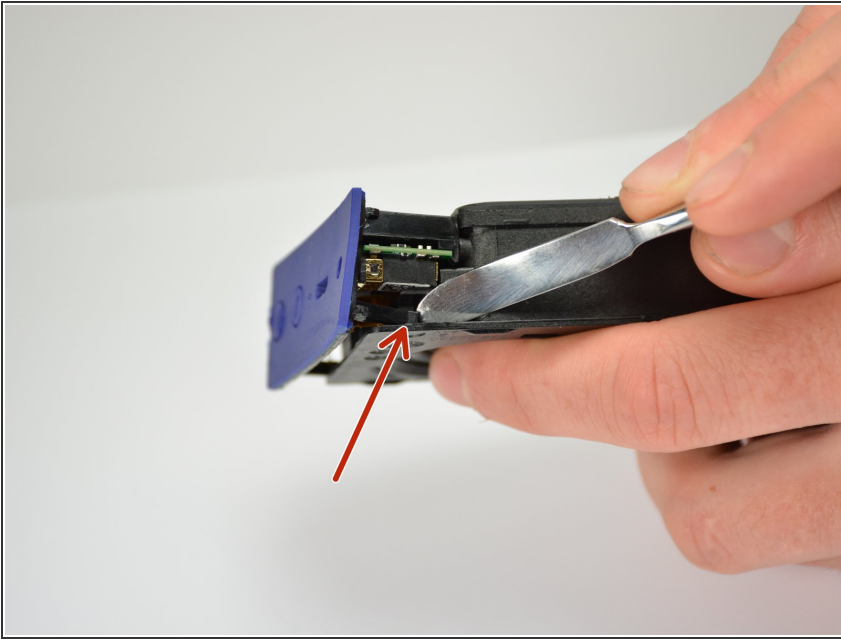
- Push against the side without end cap to slide the internal components out of the case.
- While holding the metal outset casing with one hand, press on the black inner plastic casing with your thumb.
- ⓘ It will be very difficult the first time. There is a rubber seal on the outside of the plastic inner case that creates a lot of friction with the metal outer case.

Step 6 — USB/Auxiliary Port



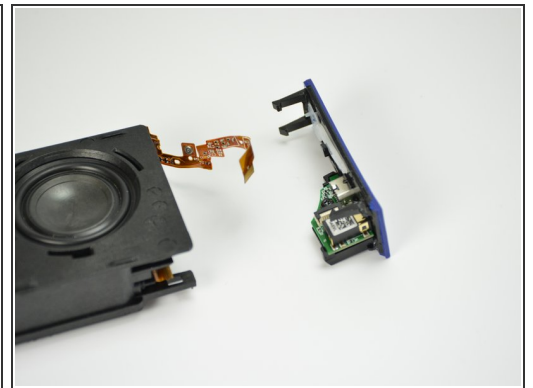
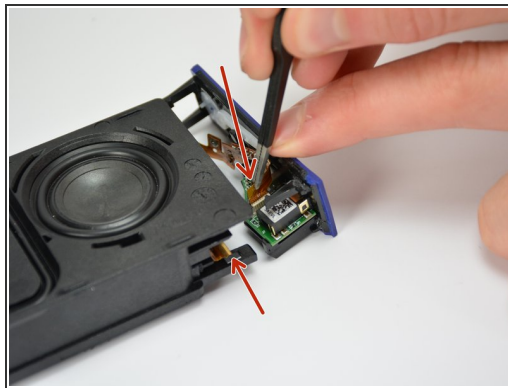
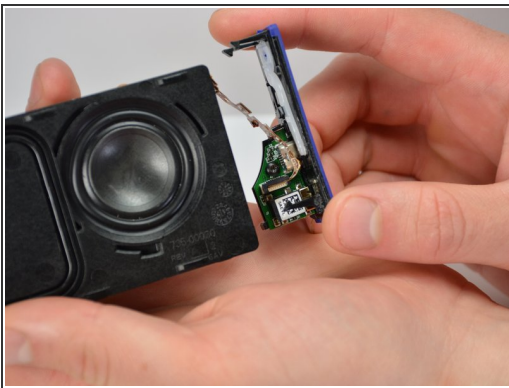
- Using the standard metal spudger, carefully pry up the top 2 plastic tabs which hold the exterior button and port cover onto the interior plastic frame.

Step 7



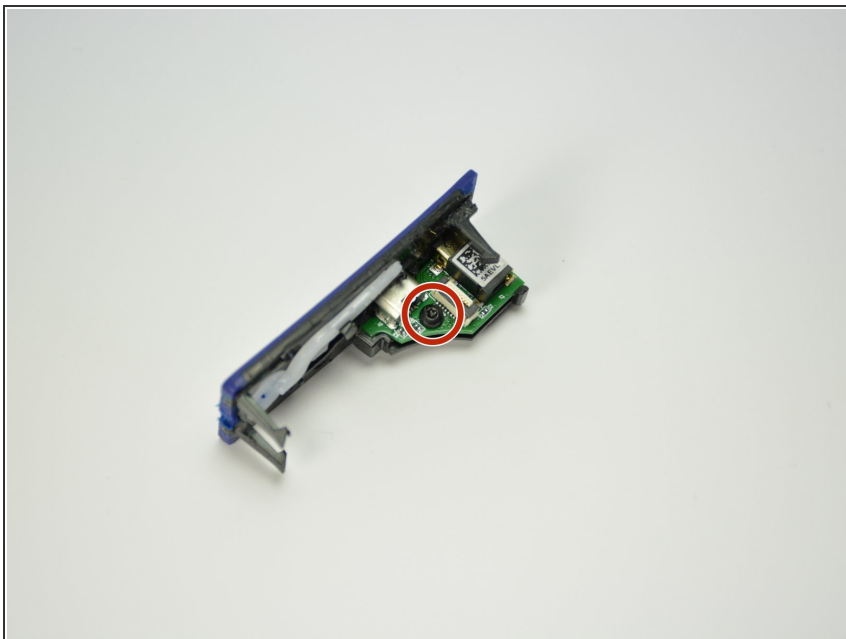
- Using the classic metal spudger, pry up the bottom 2 tabs attaching the other side of the button panel.
- ⓘ It should come off after prying up the first tab.

Step 8



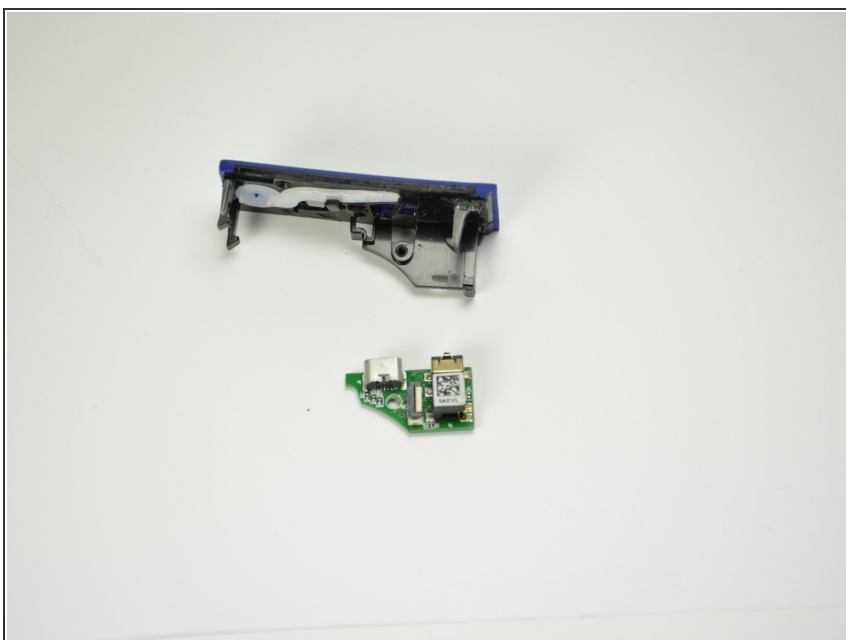
- Carefully lift out the end panel.
- Unplug both the connection ribbon and the ZIF ribbon using tweezers or your hands.
- ⓘ There is a bit of glue to hold the connection ribbon down.

Step 9



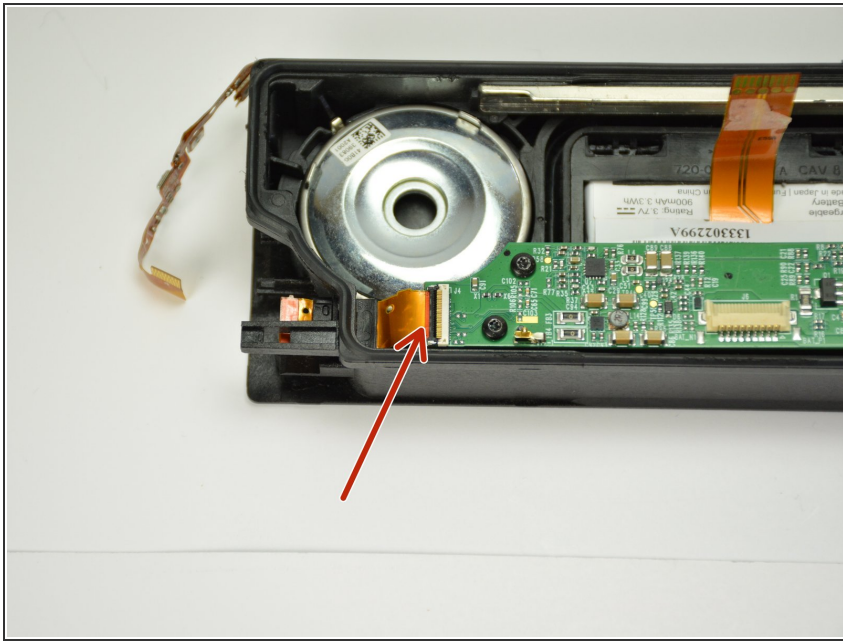
- Remove the 5mm T6 screw holding the port assembly onto the end cap.
- ⓘ Unlike the flat top screw holding the metal housing, these screws are roundtop.

Step 10



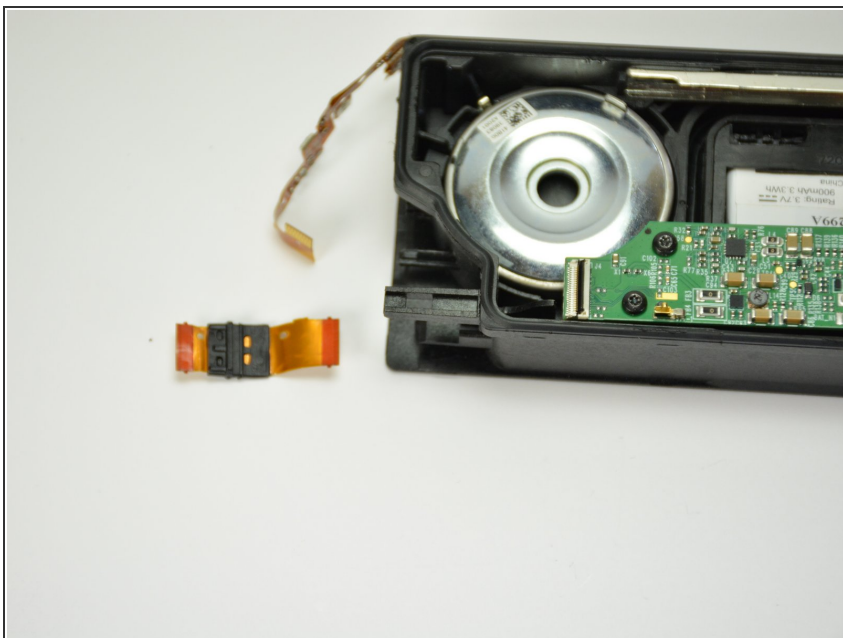
- Remove the old port assembly from the end cap.
- ★ Alternate Reassembly required, read on.

Step 11



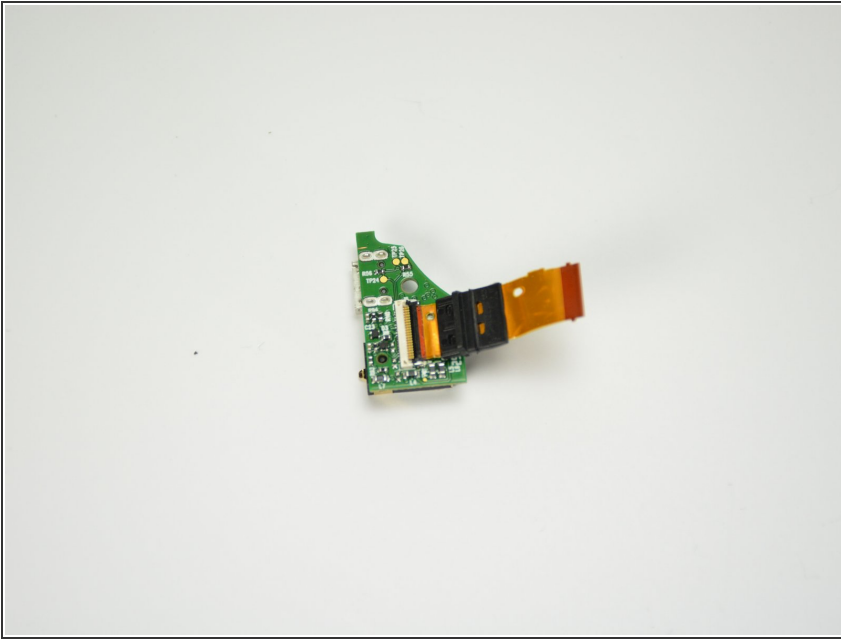
- Disconnect the Motherboard connection ribbon from the motherboard.
- ⓘ The ribbon should no longer be connected at either end.

Step 12



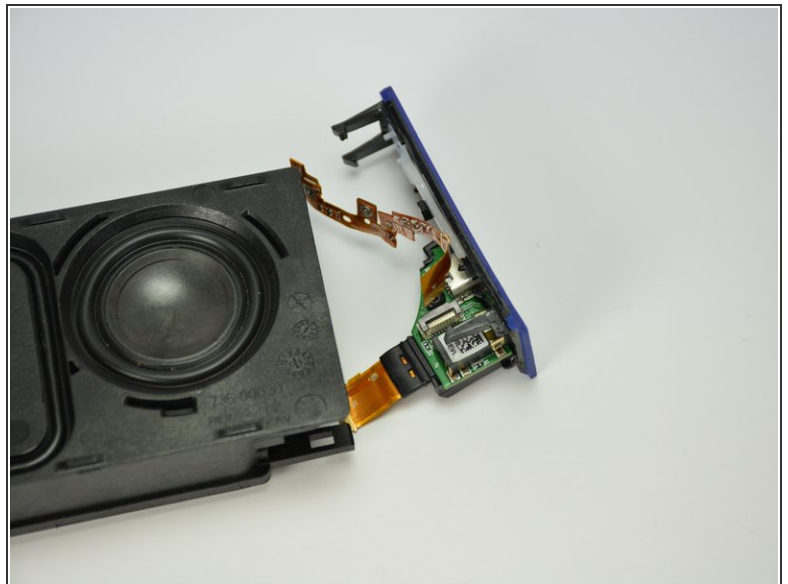
- Very carefully pull the motherboard connection ribbon through the plastic casing, removing it from the plastic casing.

Step 13



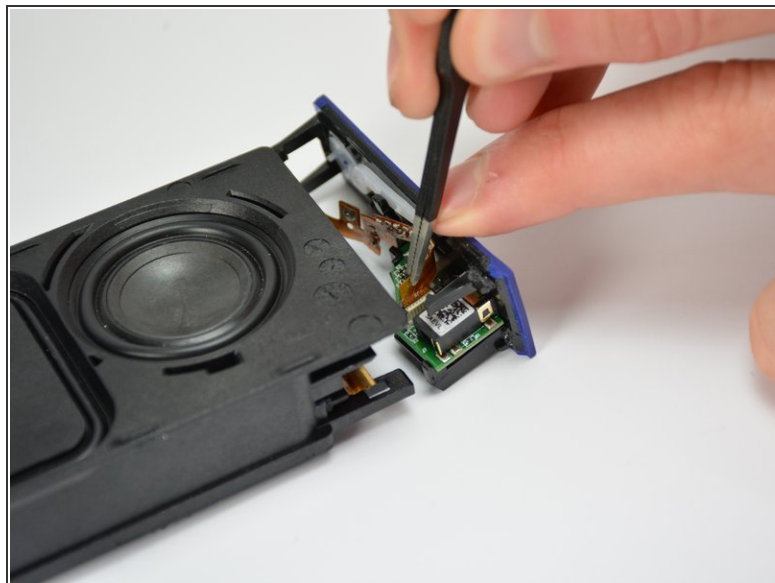
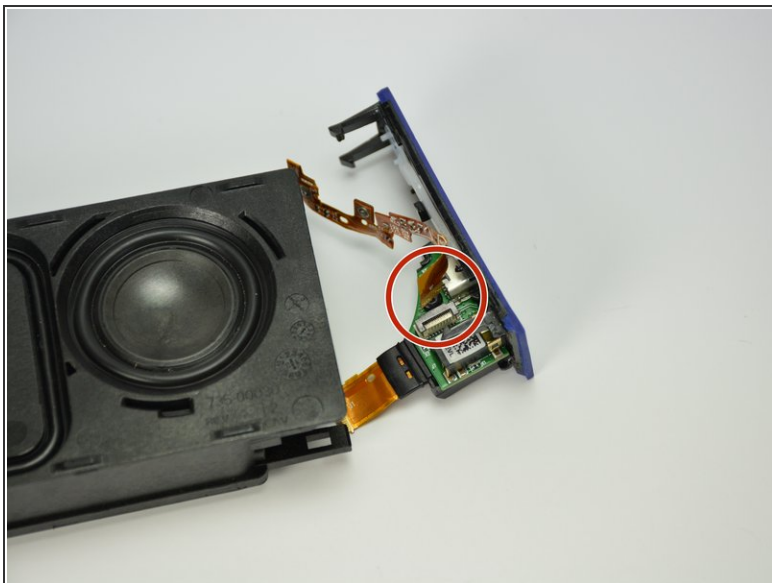
- Insert the connection ribbon into its ZIF connection port on the bottom of the new port assembly
- ⚠ ZIF connectors are delicate and often give beginners trouble, search for ZIF connector tips on the web.

Step 14



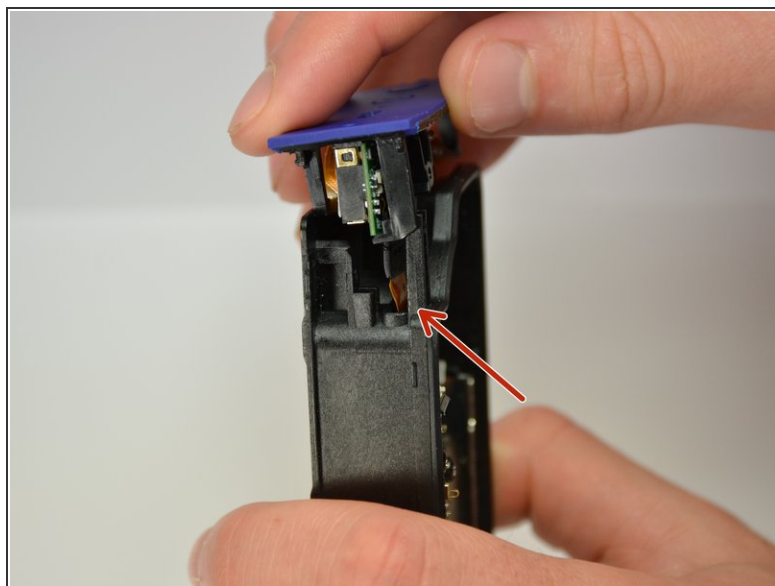
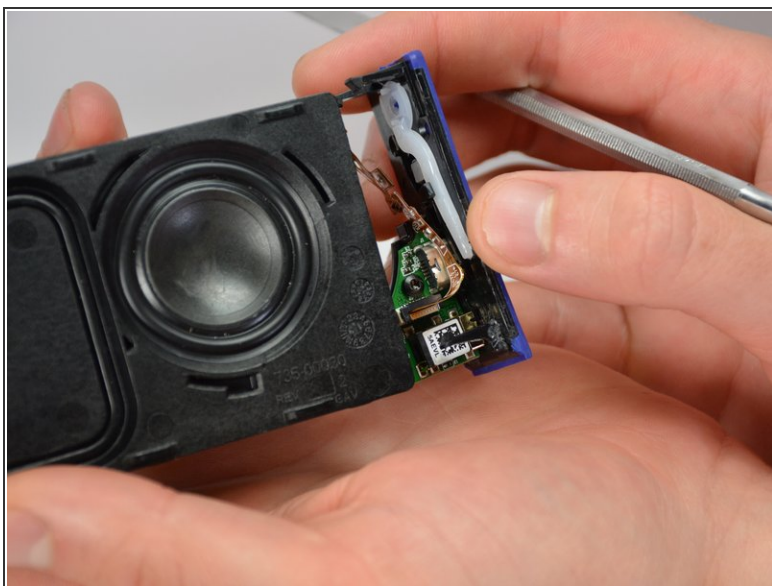
- Position the new port assembly on the end cap and reinsert the 5mm T6 screw.
- ⓘ The rubber insulation around the motherboard connector should help hold the ZIF connector in place after the screw has been reinserted.

Step 15



- Reconnect the button ribbon connector on the top of the port assembly.

Step 16



- Reconnect the endcap to the plastic housing.
- While you reconnect the endcap to the plastic housing, carefully position the ribbon slide through the ribbon slit and into the plastic casing.

Step 17



- Snap the end cap back onto the inner plastic casing and reconnect the ZIF ribbon to the motherboard.
- ☑ Finish reassembling in descending order starting at step 5.

To reassemble your device, follow steps 1 through 5 in reverse order.