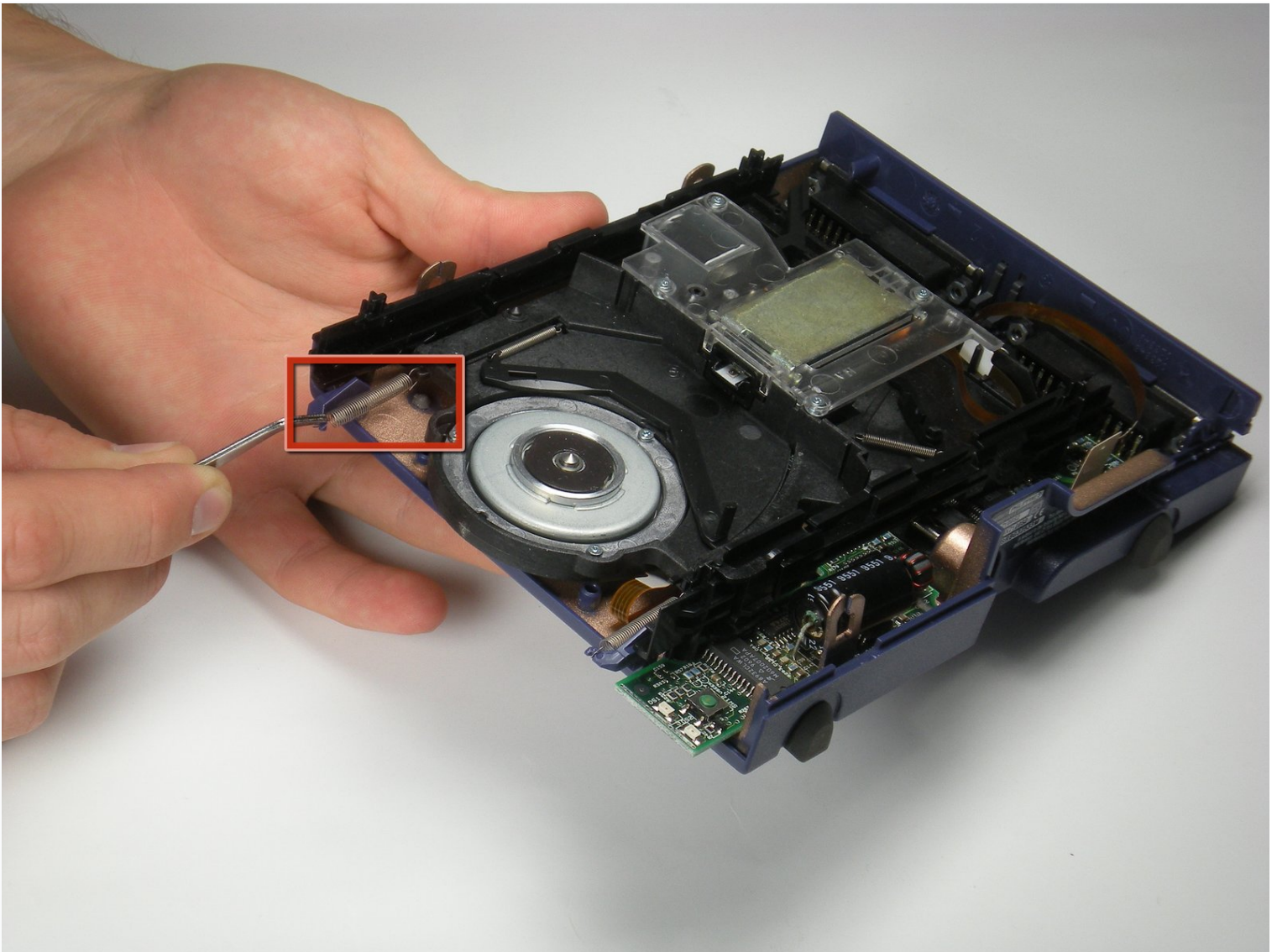




lomega Z100S2 Disk Reader Replacement

Written By: Ezery Kennedy





TOOLS:

Spudger (1)

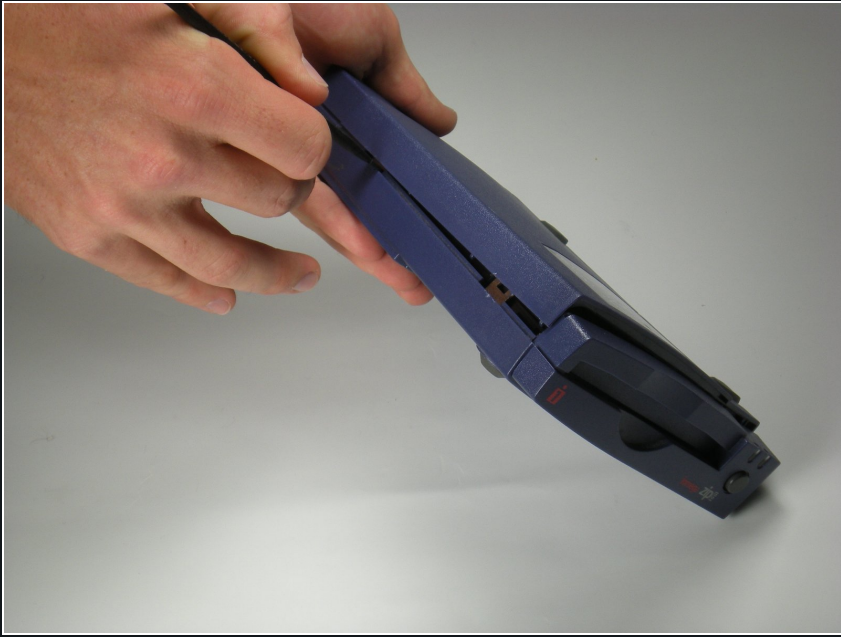
Tweezers (1)

Step 1 — Case



- Push in the plastic tab that can be seen through cracks in the front left corner using a spudger.

Step 2



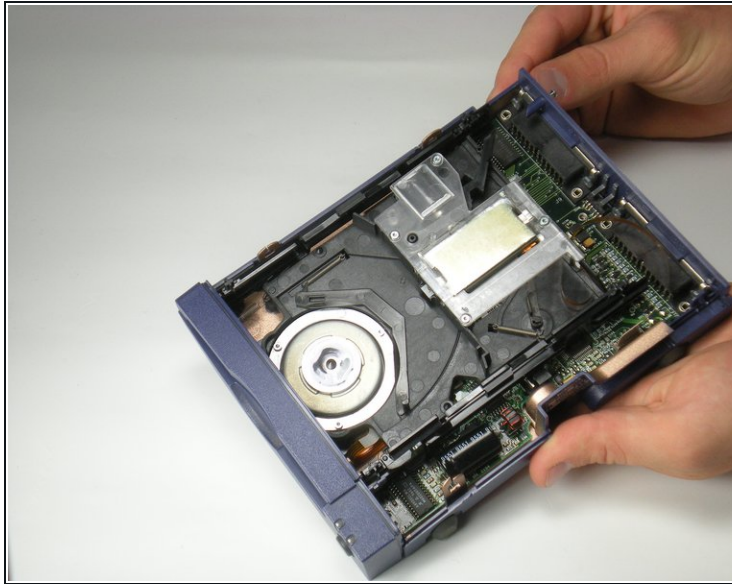
- Move down the same side and push in the plastic tab.

Step 3



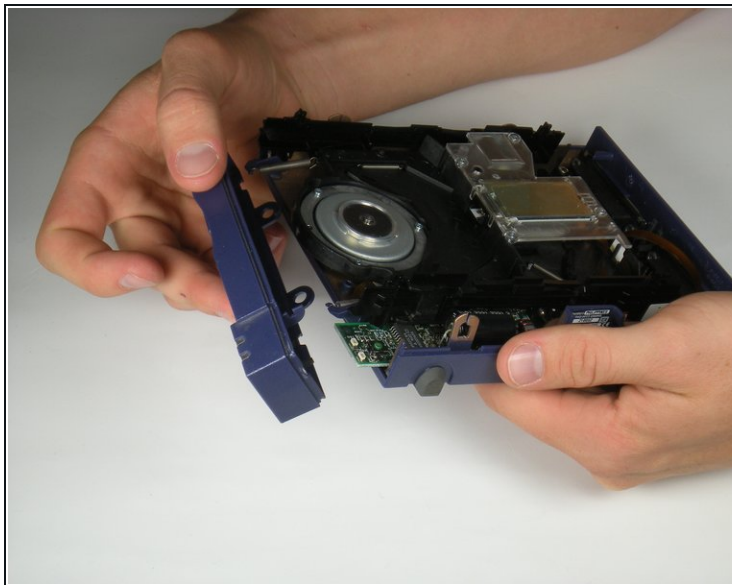
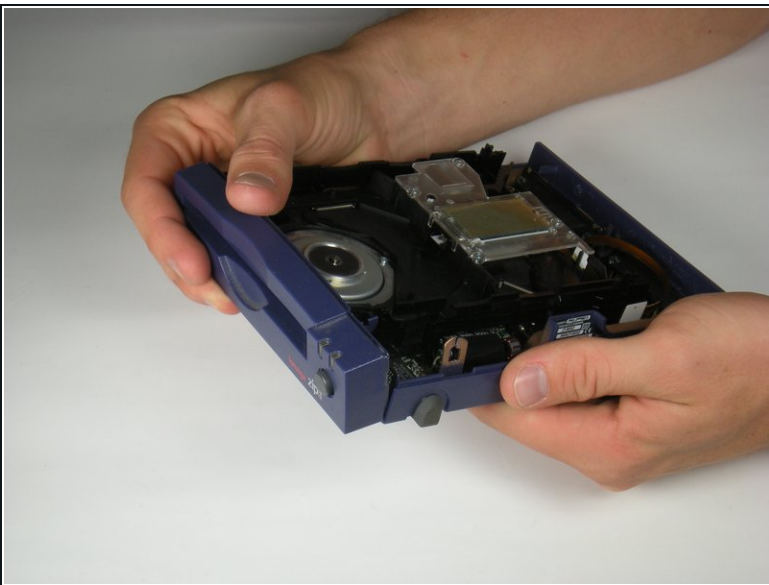
- Move to the front right side and once again push in the plastic tab.
- ① There is not a fourth tab to push in after this one.

Step 4



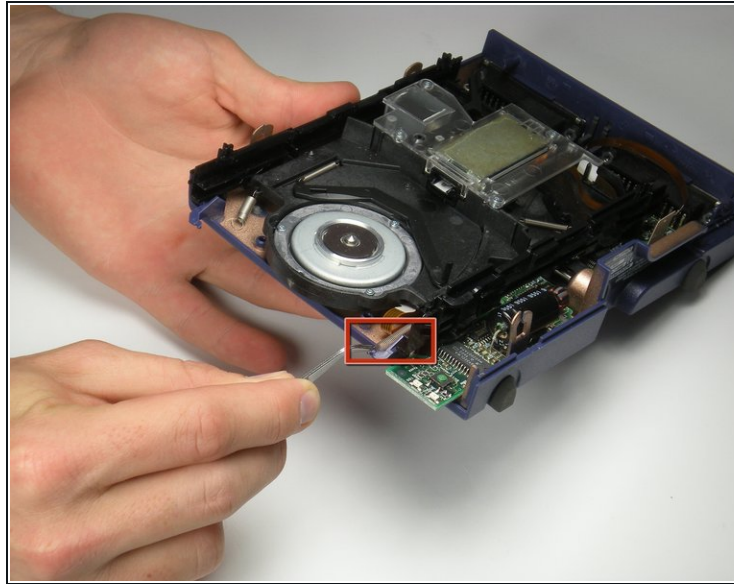
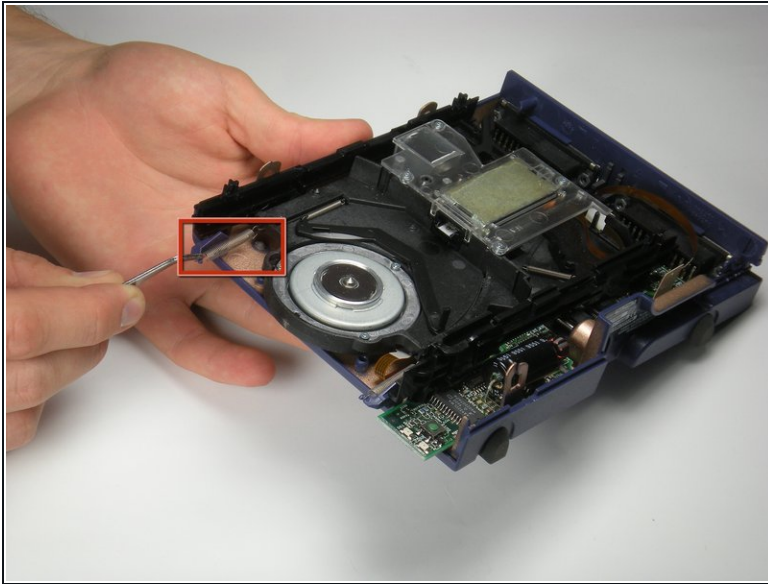
- Grab the cover by the front side and pull upwards.
- You might encounter some resistance. Pull firmly, but don't yank it.

Step 5



- Tilt the front case down until the pegs detach from the bottom of the case.
 - Lift up and outward.
- i** The motherboard will be loose at this point.

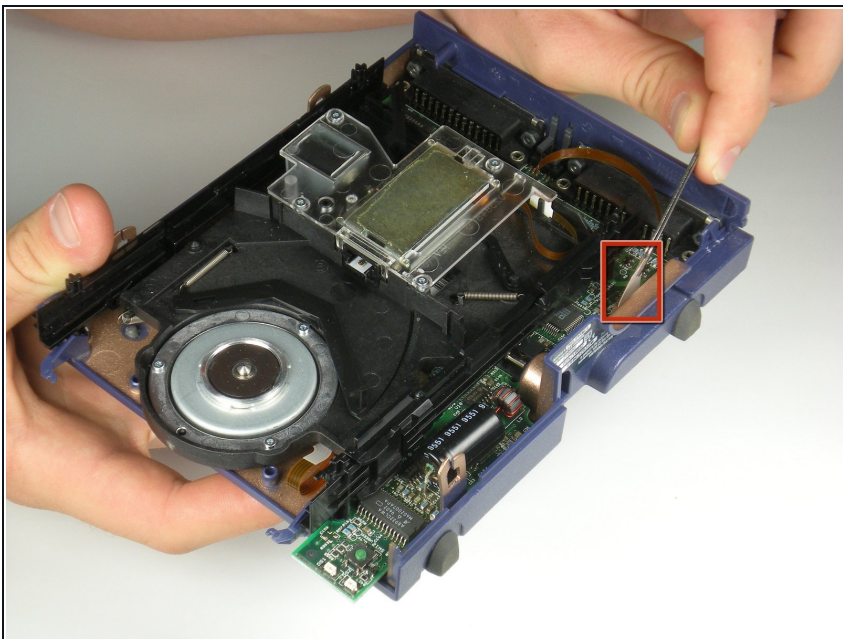
Step 6 — Disk Reader



- Unhook the two springs from the front plastic hooks.

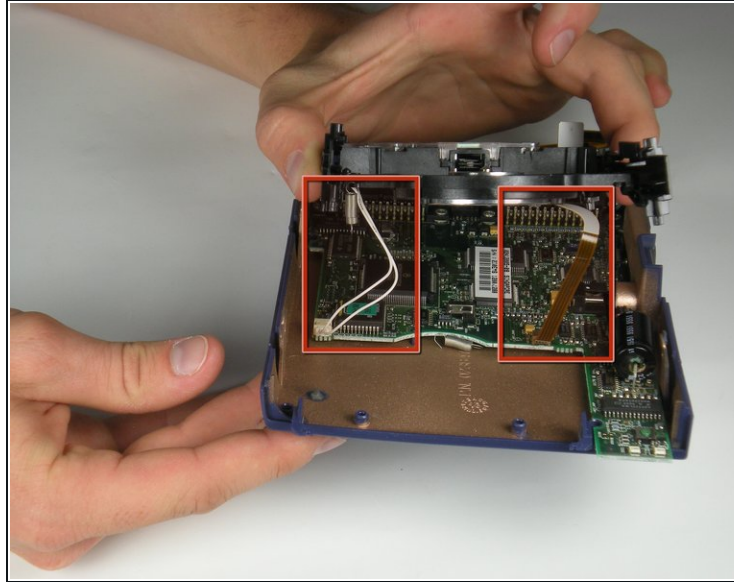
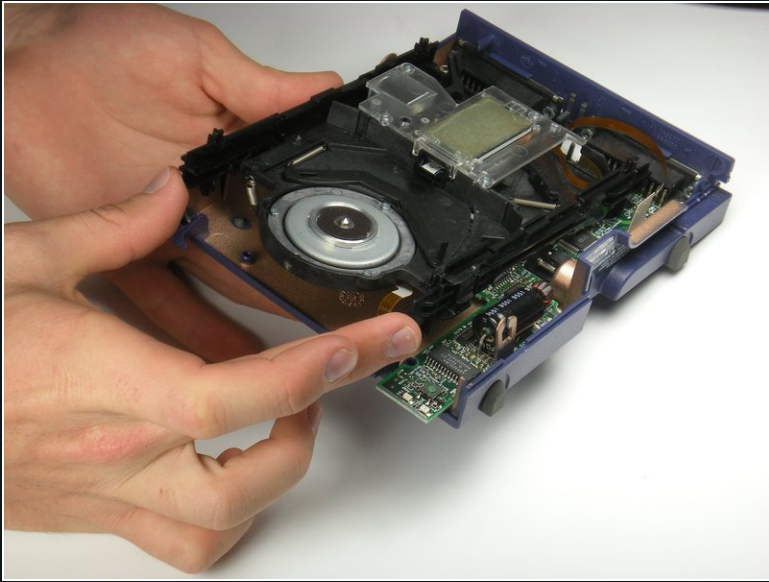
i The black side rails of the reader should easily slide forward and off.

Step 7



- There is a white tab connected to the motherboard. Pull it upward by gently rocking it back and forth.
- i** The tab does not come completely out, it only slides up slightly, so don't rip it out!

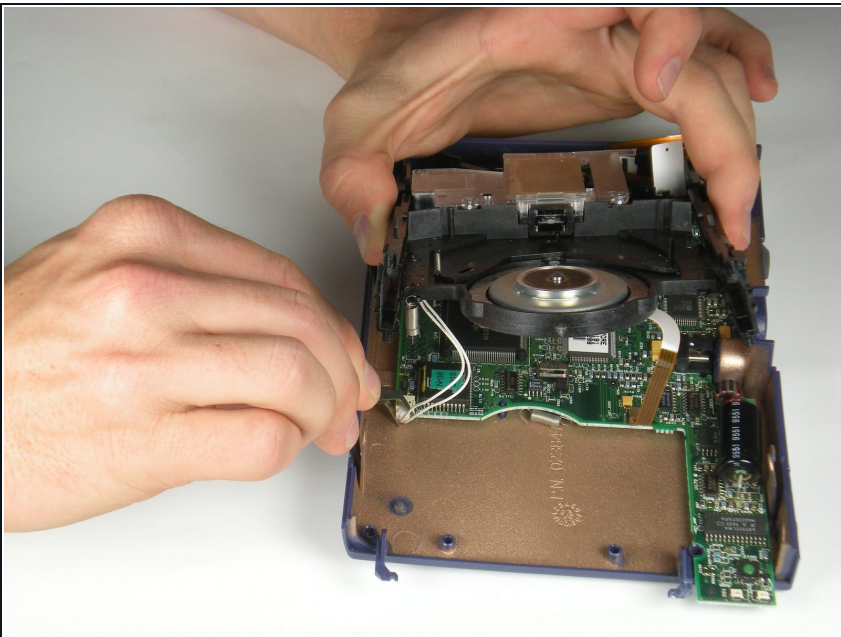
Step 8



- Grab the reader by its sides and gently pull it upward.

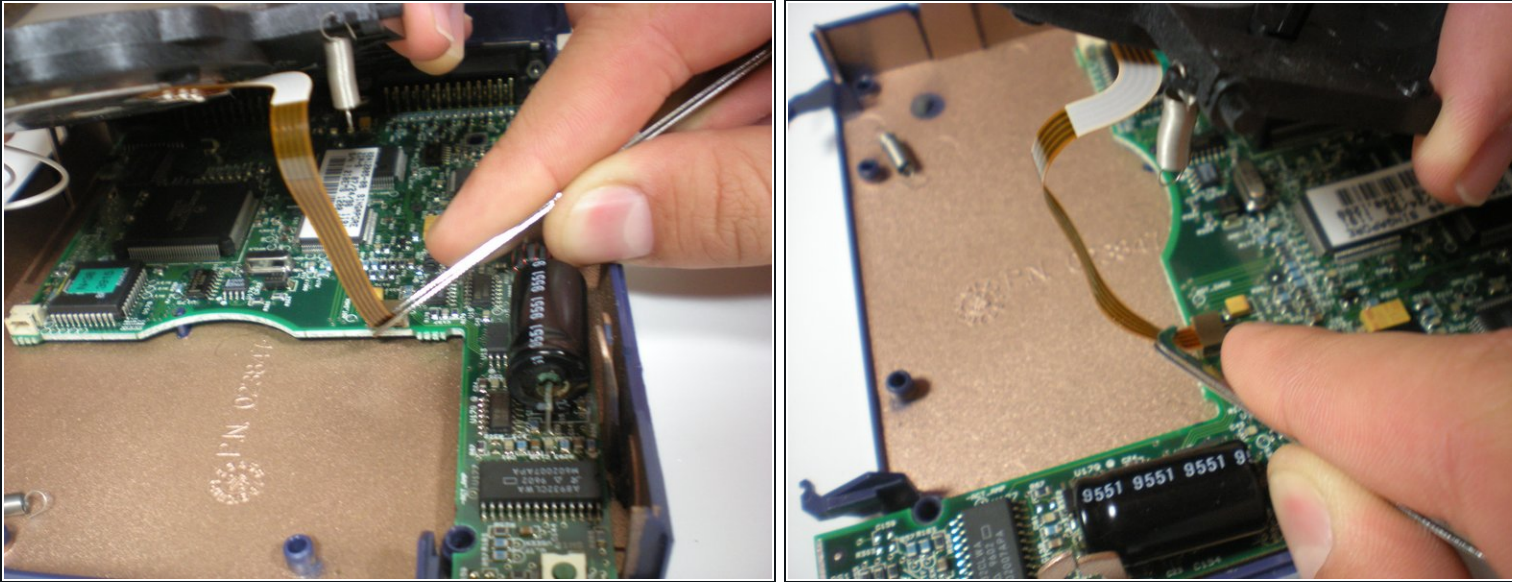
i There are two wires still connected to the bottom of the reader that haven't been detached.

Step 9



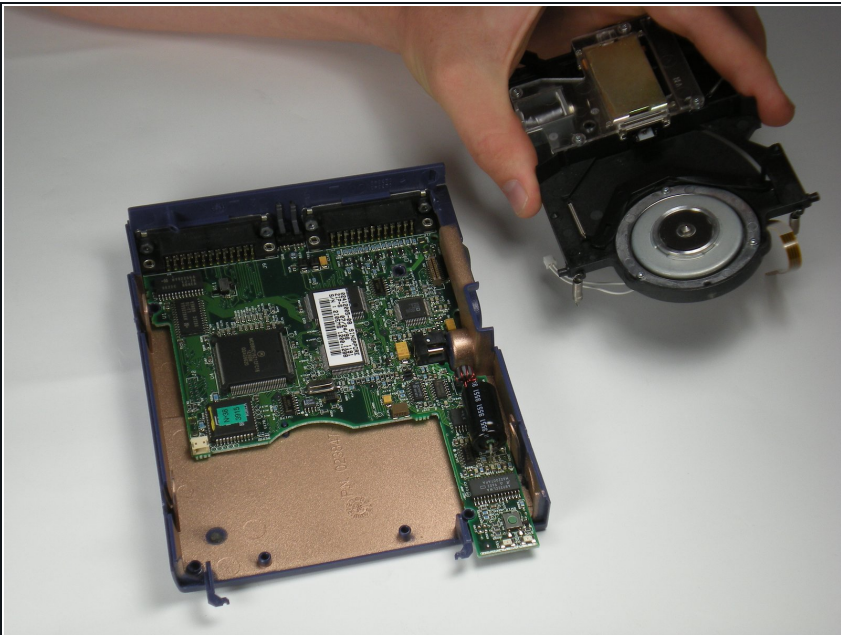
- Disconnect the white wires by using tweezers to gently pull the bottom connector toward you.

Step 10



- Disconnect the thin ribbon wire by using tweezers to gently pull the connector at the bottom toward you.

Step 11



- Lift the reader up and out from the device.

To reassemble your device, follow these instructions in reverse order.