



Dell Optiplex SX280 Lower Fan Replacement

The fan below the Heat Sink and nearest the hard drive.

Written By: Wyatt



INTRODUCTION

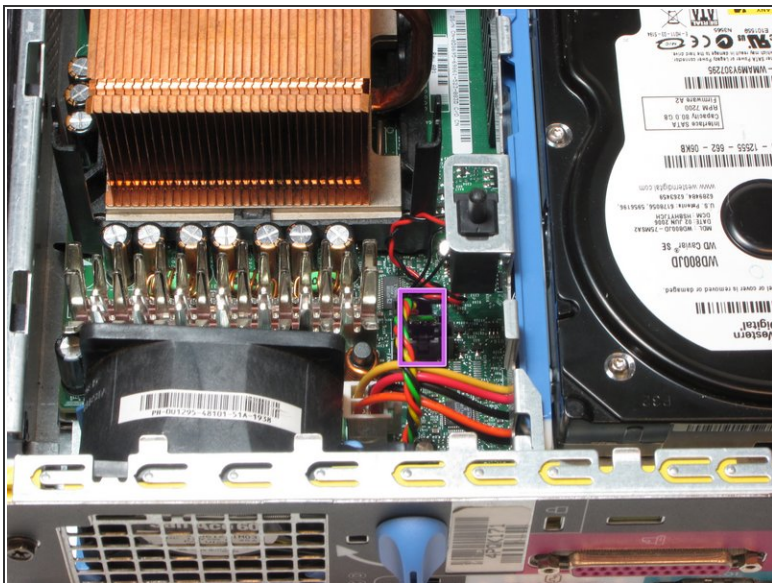
Prerequisite Only



TOOLS:

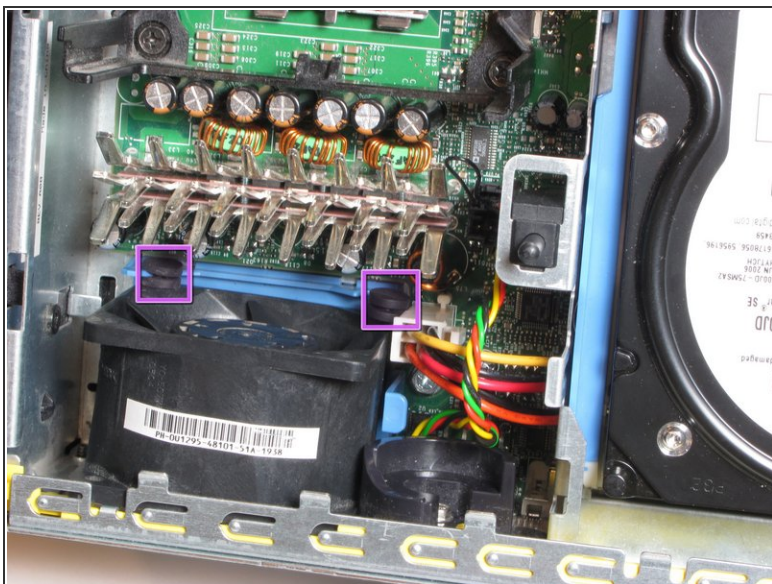
- [Spudger](#) (1)
-

Step 1 — Lower Fan



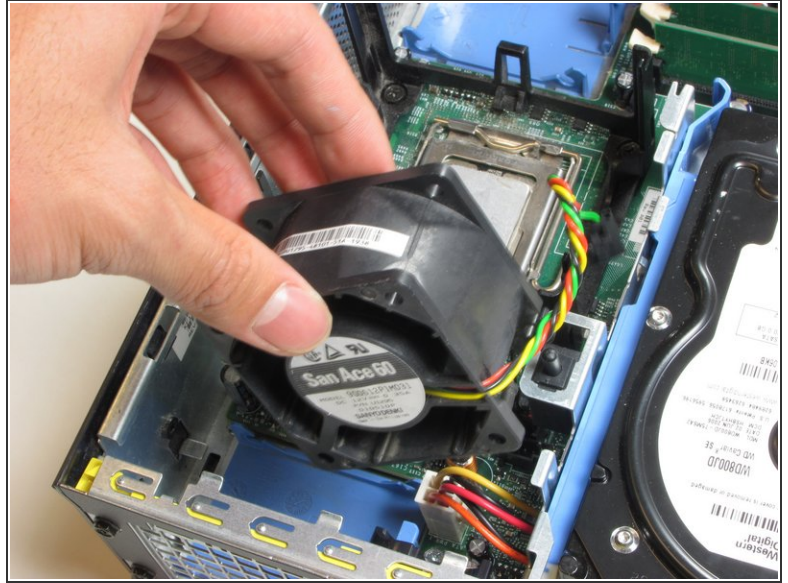
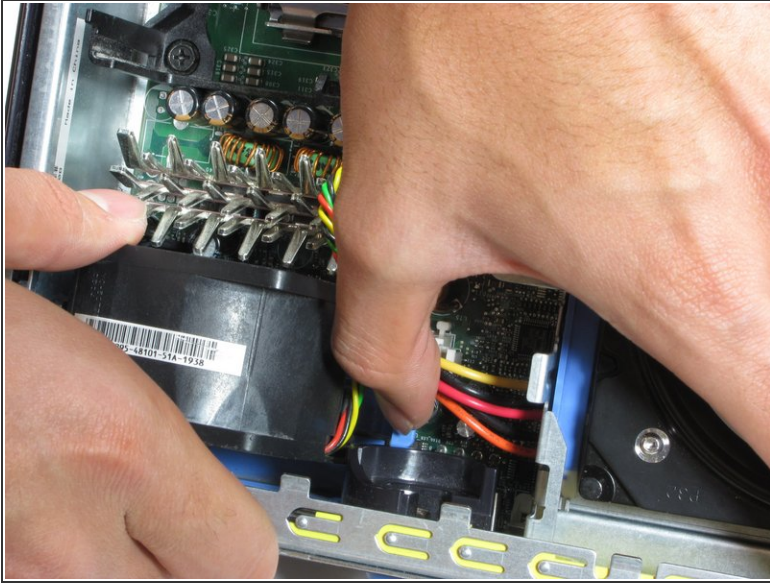
- Remove the power supply that connects the lower fan to the motherboard, distinguished by its black, red, green and yellow wires.
- ⓘ Make sure to press on the release tab while removing the power connector.

Step 2



- Remove the rubber grommets from the base of the fan. A spudger may be useful.

Step 3



- Press on the blue release tab and remove the fan.

To reassemble your device, follow these instructions in reverse order.