



APEX AP-GS918 Battery Replacement

This guide shows you how to replace the battery in your tablet.

Written By: Megan Lozicki



INTRODUCTION

We will show you how to disassemble your tablet in order to access the battery. This replacement guide is helpful if you feel that your battery is faulty and no longer holding charge. Therefore, you need to replace it.



TOOLS:

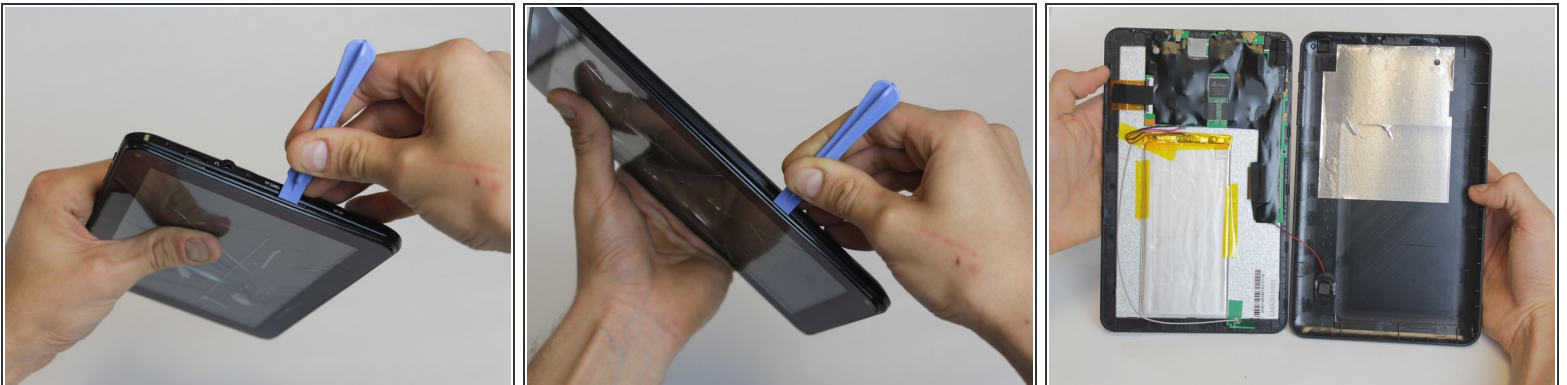
- [Phillips #00 Screwdriver](#) (1)
 - [Portable Soldering Iron](#) (1)
 - [iFixit Opening Tools](#) (1)
 - [Tweezers](#) (1)
 - [Spudger](#) (1)
-

Step 1 — Power/Volume Button



- To begin, locate the two 4.9mm Phillips #00 screws at the top corners of the case and remove them.

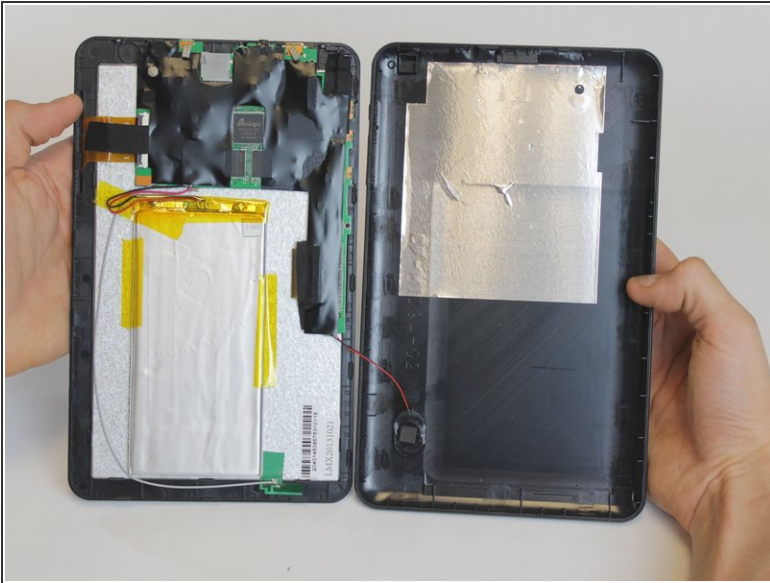
Step 2



- Squeeze the plastic opening tool in between the seam where the screen joins the plastic case.
- Begin separating the bottom of the case from the screen by carefully going around the whole edge of the case and slowly prying it apart.

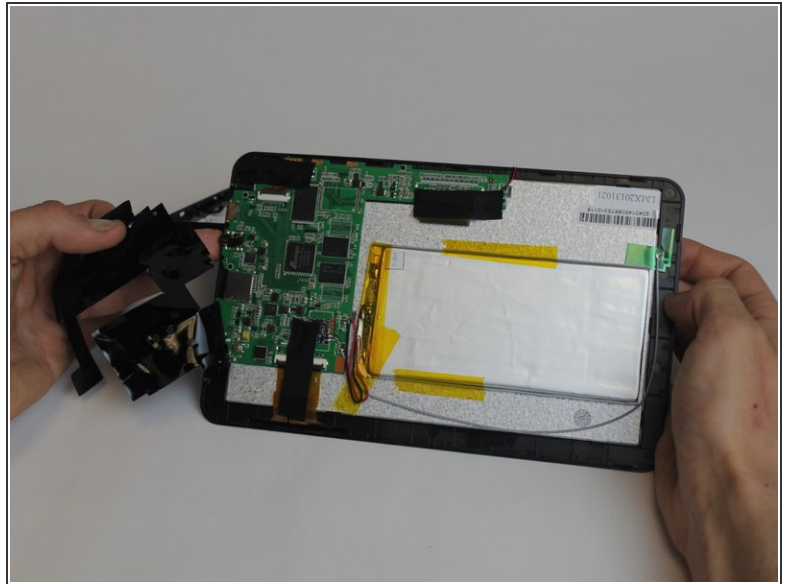
⚠ Be careful when separating the lids because the wires holding the speaker to the motherboard are very short.

Step 3



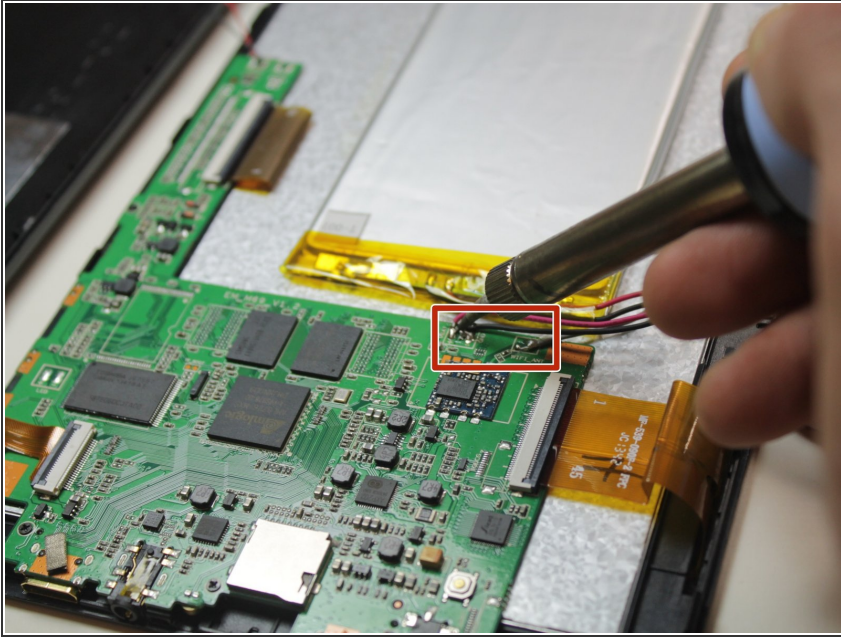
- Carefully place the bottom lid next to the screen case. The power/speaker buttons should be visible at the corner of the lid. Remove the buttons with the tweezers.

Step 4 — Battery



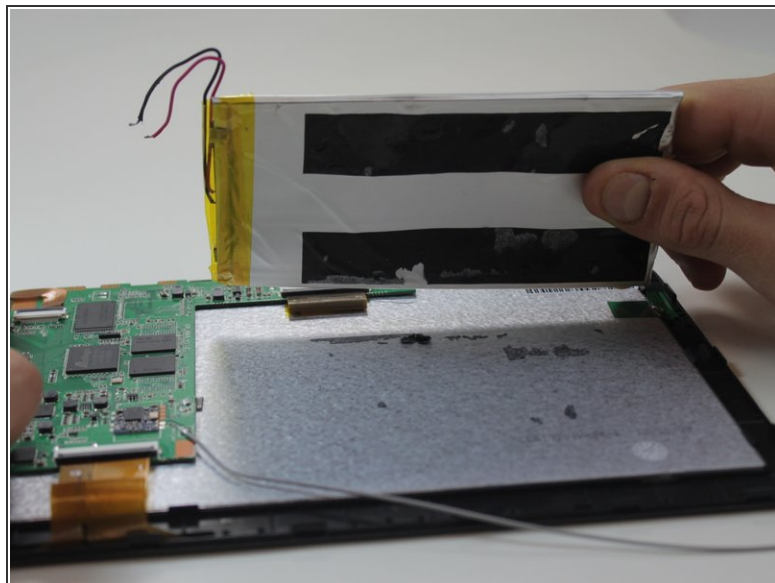
- Begin removing the black tape covering the motherboard inside the tablet.

Step 5



- You will need to desolder the two contact points that connect the battery to the mother board.
- ⓘ Make sure to allow ample time (at least 5-8 minutes or more) for the soldering iron to heat up. Otherwise, the solder won't melt.
- Touch the hot iron to the contact points and gently pull on the wires to loosen them from the solder. They should release easily.
- ⚠ Make sure not to touch the contact points after desoldering them because they will remain very hot for a short while afterwards.

Step 6



- Using the black nylon spudger, get underneath the battery and begin prying it loose from the rest of the tablet.
- ⓘ The tape holding the battery to the tablet has a very strong hold so be prepared for resistance.

To reassemble your device, follow these instructions in reverse order.