



Sony Xperia E1 Touch screen Glass, LCD Display, Loudspeaker, Earpiece Replacement

Sony Xperia E1 Touch screen Glass, LCD Display, Loudspeaker, Earpiece Replacement

Written By: ZFix



INTRODUCTION

Sony Xperia E1, Dual, D2004, D2005, D2105 - how to disassemble the phone and change the Digitizer, LCD Display, Loudspeaker, etc.

_____ **Video tutorial:** _____

[video: <https://youtu.be/3gLKbrxeD2o>]



TOOLS:

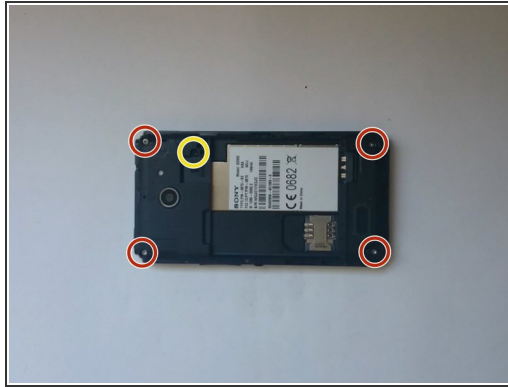
- [T4 Torx Screwdriver](#) (1)
- [Tweezers](#) (1)
- [Spudger](#) (1)
- [iFixit Opening Tools](#) (1)



PARTS:

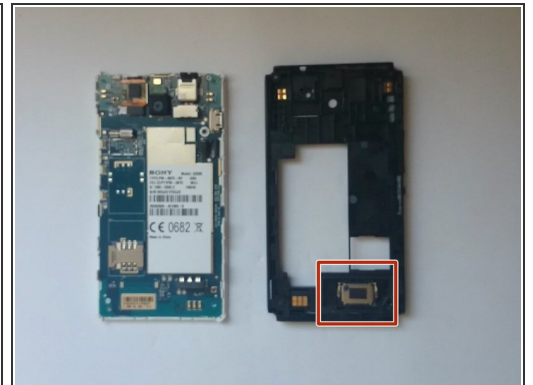
- [D2004, D2005 touch screen](#) (1)
- [D2004, D2005 LCD display](#) (1)

Step 1 — Touch screen Glass, LCD Display, Loudspeaker, Earpiece



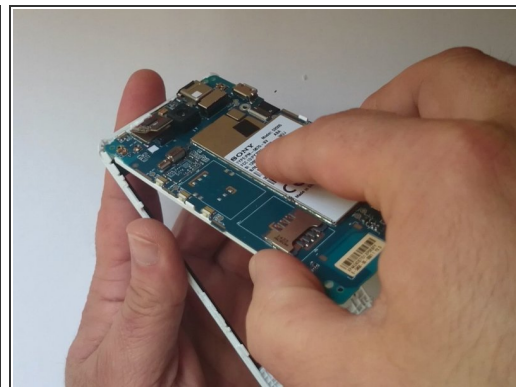
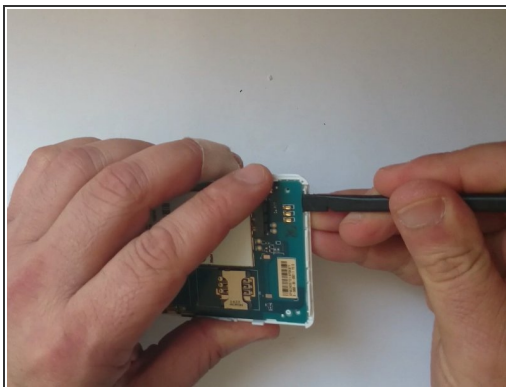
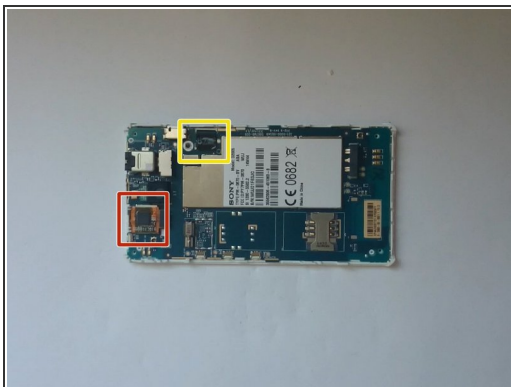
- Turn off the phone, remove the battery, SIM card and micro SD card.
- The screws are Torx T4. One of them, near the microSD card reader is different.

Step 2



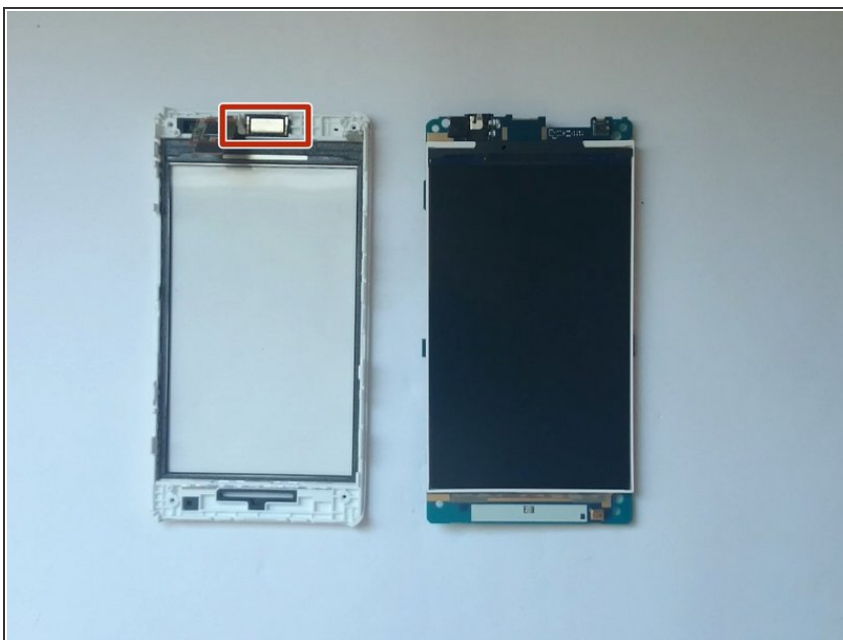
- Use a plastic tool to remove the middle frame.
- Loudspeaker

Step 3



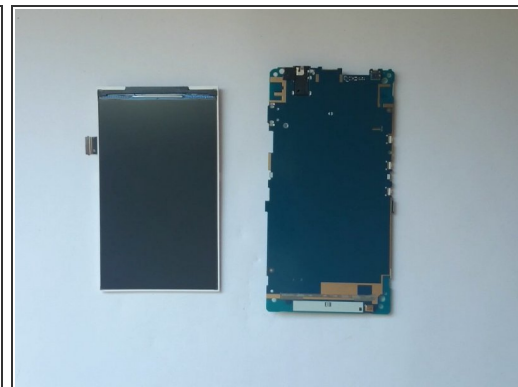
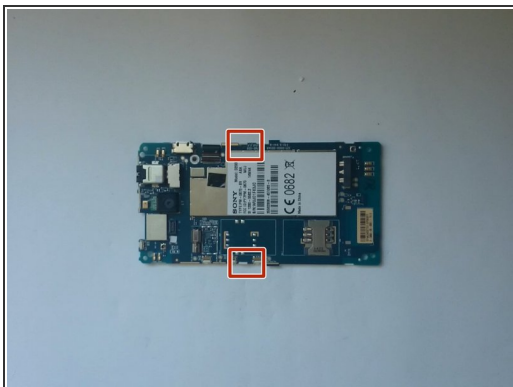
- Touch screen flex cable. Disconnect it.
- LCD Display flex cable. Open the connector.
- The logic board is held to the display frame by several plastic locking clips. Use a plastic tool to remove it.

Step 4



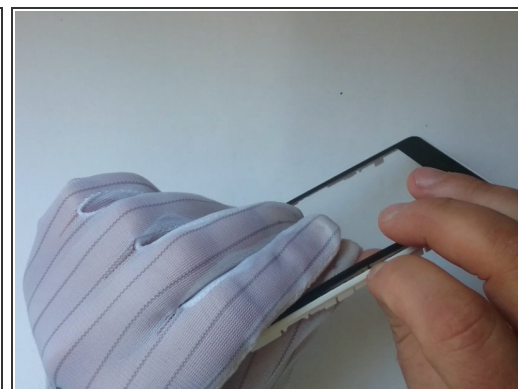
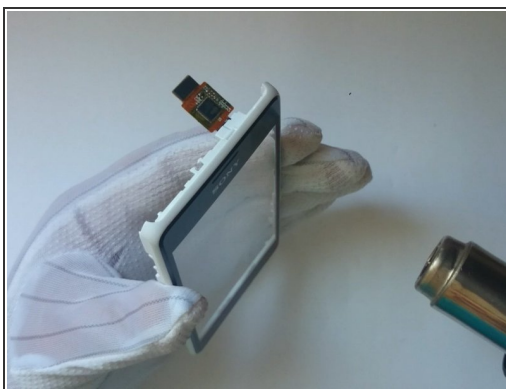
- Earpiece.

Step 5



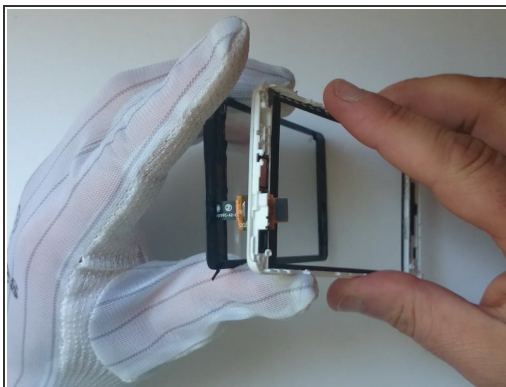
- Release the LCD display from the main board.

Step 6



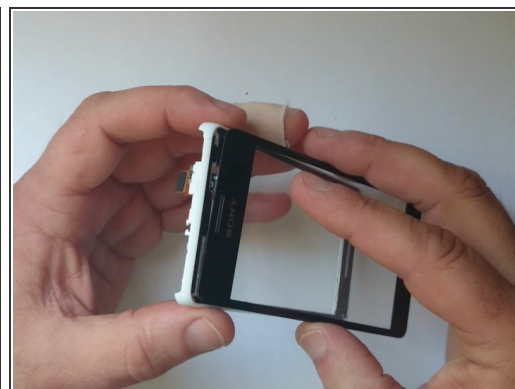
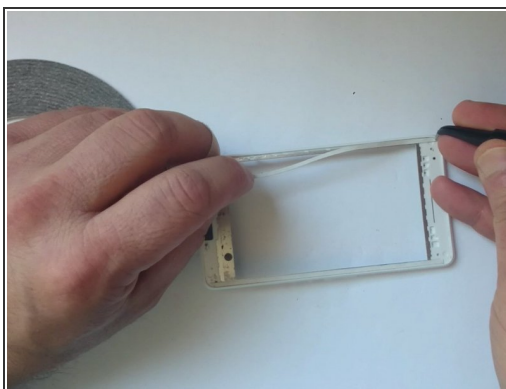
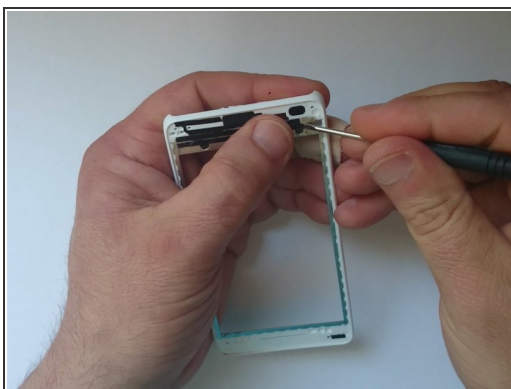
- If the glass is broken, put some scotch tape to prevent it from breaking to pieces.
- Use a hot air to soften the adhesive tape.
 - ⓘ You can use a hairdryer.
- Start with separating at the middle, where the contact area is smaller.

Step 7



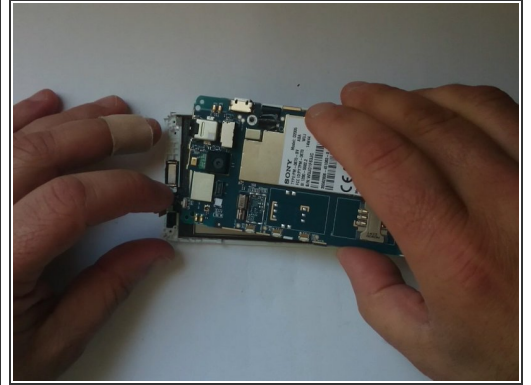
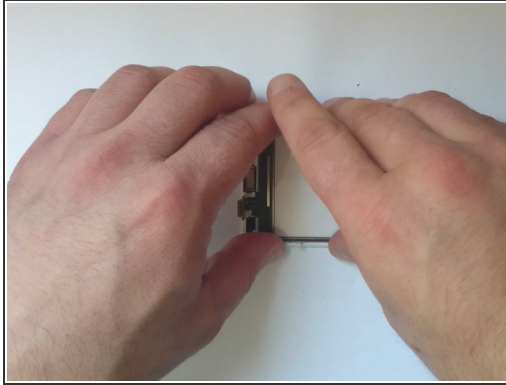
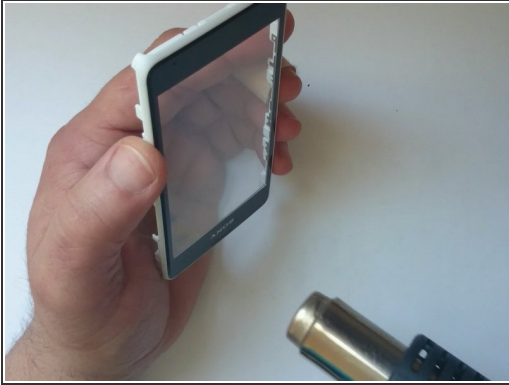
- Use a plastic tool for separating the glass from the frame.

Step 8



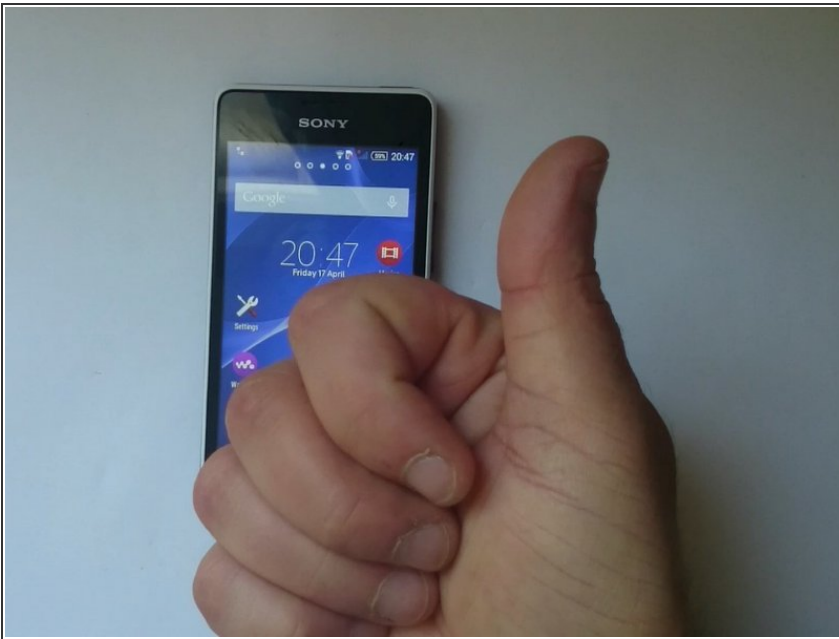
- Clean the frame.
- Put adhesive tape if the new spare part doesn't have any.
 - ⚠ Be careful, don't cover the holes for the microphone, proximity sensor, etc.
- Install the new Digitizer.

Step 9



- Use again hot air and some pressure to stick the glass better.
- Start wit reassembling.

Step 10



- That's all.
- .
- .
- .
- .
- .
- .
- **Did you do it successfully?**

To reassemble your device, follow these instructions in reverse order.