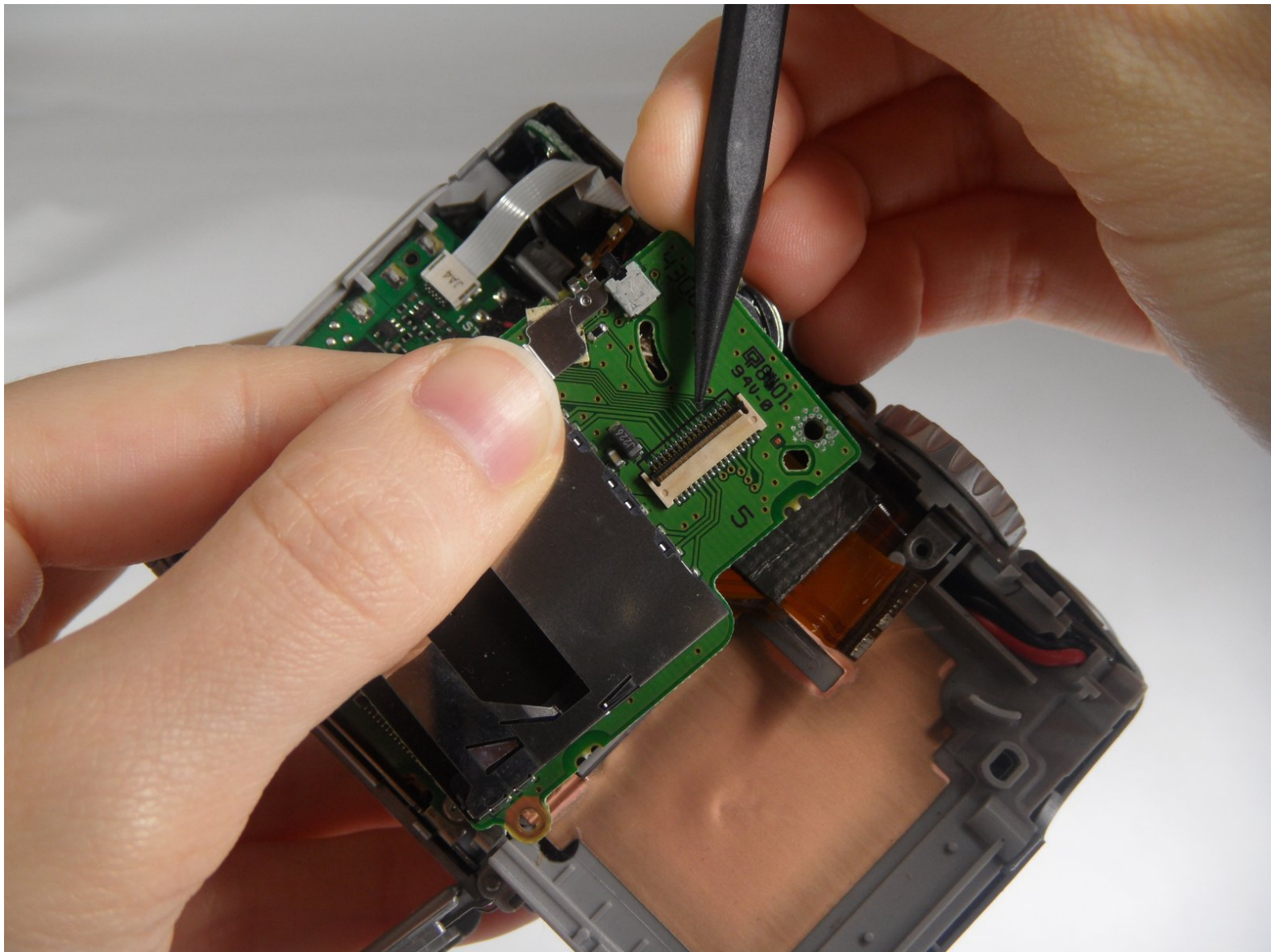




Canon PowerShot A540 SD Card Reader Replacement

This guide teaches you how to remove and replace the SD card reader.

Written By: Cooper Hale



INTRODUCTION

If your camera keeps showing you an "SD card error" message, but the SD card in use is the correct type and is uncorrupted, your SD card reader may be in need of replacement. After removing the back cover and the LCD screen, you will be able to replace the SD card reader yourself.



TOOLS:

- [Phillips #000 Screwdriver](#) (1)
 - [Tweezers](#) (1)
-

Step 1 — Back Cover



- Turn off the camera.
- Turn the camera upside-down and press the tab to release the battery cover. Remove the batteries.

Step 2



- Turn the camera upside down to view the "Card/Batt. Open" Cover.
- Use a Phillips head #000 screwdriver to remove the three (3) 4.0 mm screws.

Step 3



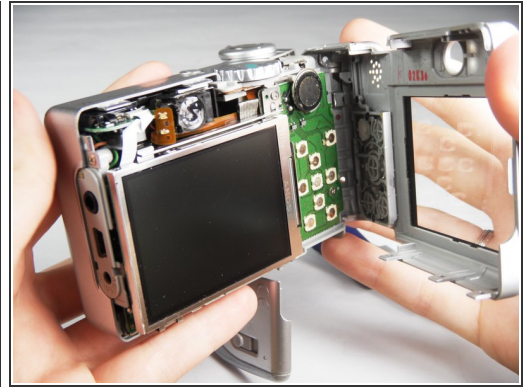
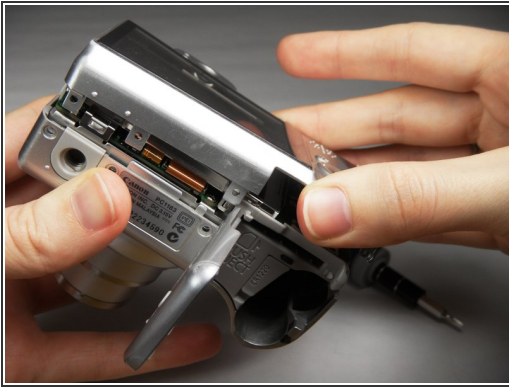
- Open "Card/Batt. Open" Cover.
- Remove the one (1) 5.0 mm screw with the Phillips head #000 screwdriver.

Step 4




- Turn the camera to the right side of the LCD screen.
- Remove the three (3) 4.0 mm screws with the Phillips head #000 screwdriver.

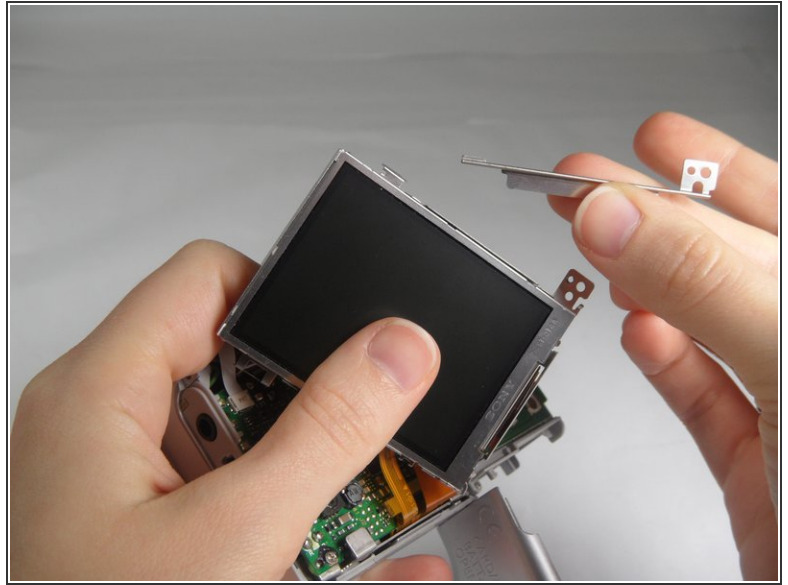
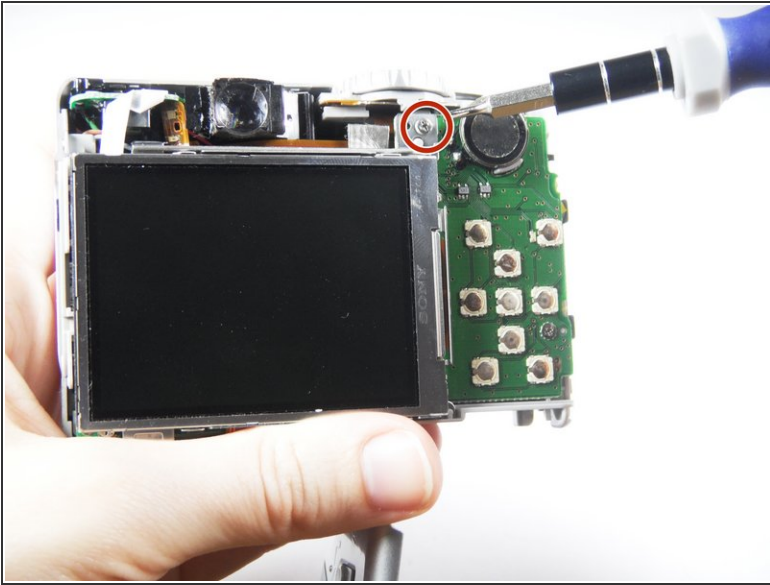
Step 5



- Gently remove the back cover.
- Start at the bottom at the corner of the "Card/Batt. Open" Cover.
- Then move onto the other edges and the top.

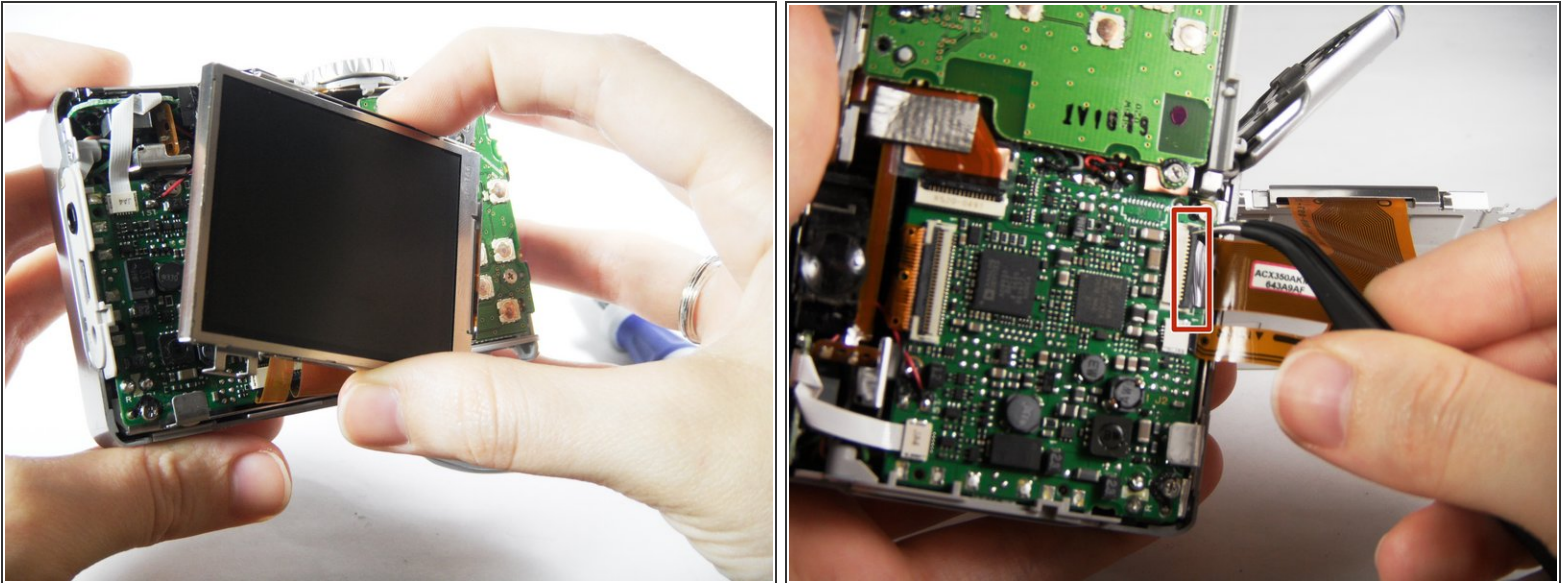
 It may be tight at the top!

Step 6 — SD Card Reader



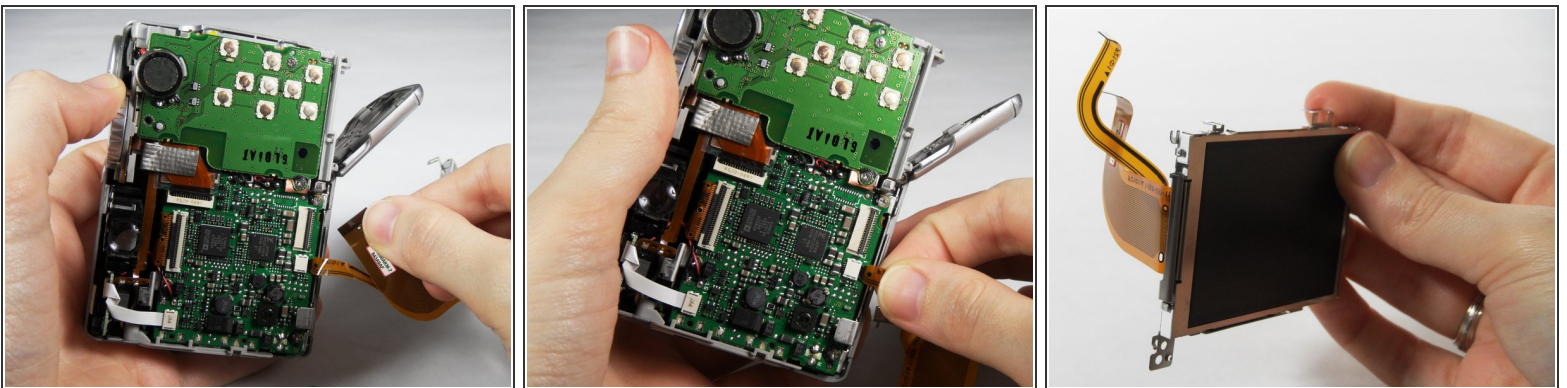
- Turn the camera to view the back.
- Remove the one (1) 3.0 mm screw on the top right corner of the screen.
- ⓘ There is a small metal bar that rests on this frame. Keep it with the screws that have been removed from the camera.

Step 7



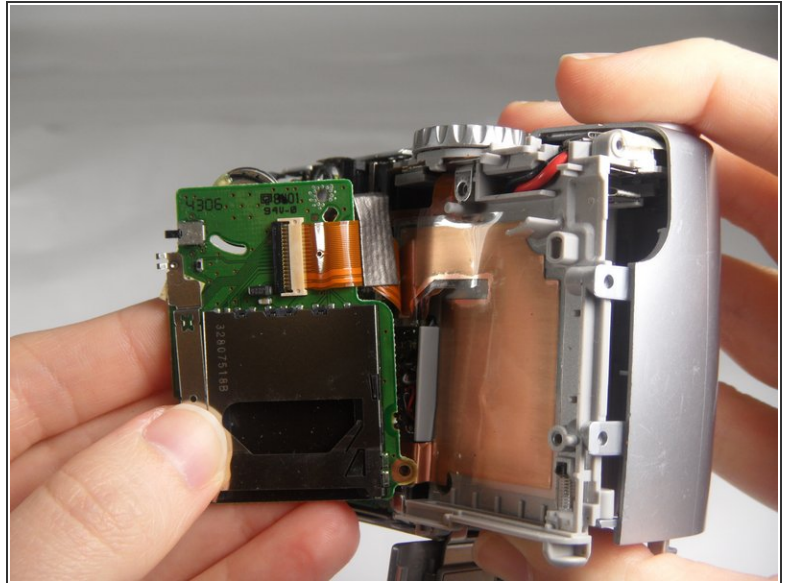
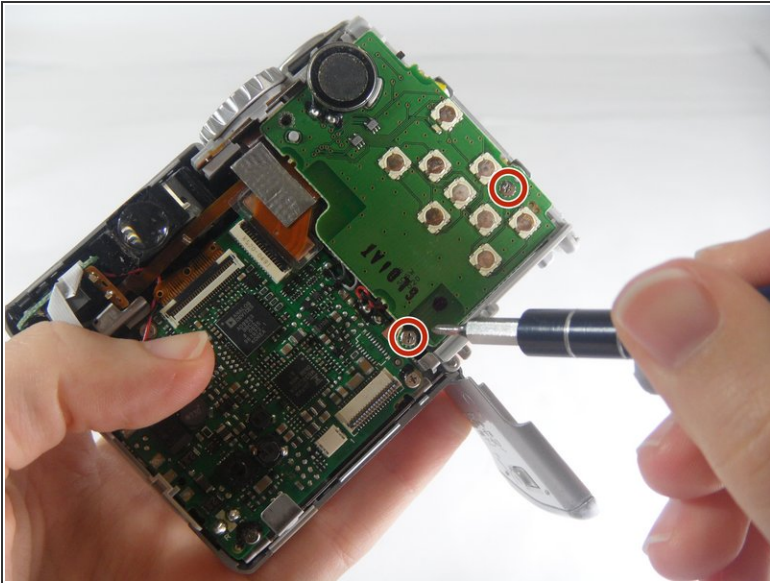
- Lift the LCD Screen off of the back to view the attached ribbon cables.
- Use tweezers to flip the black bar up.

Step 8



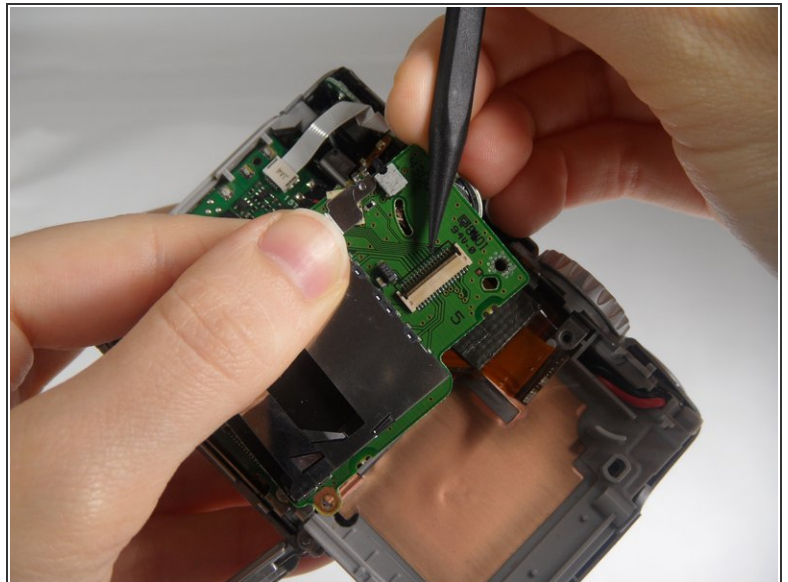
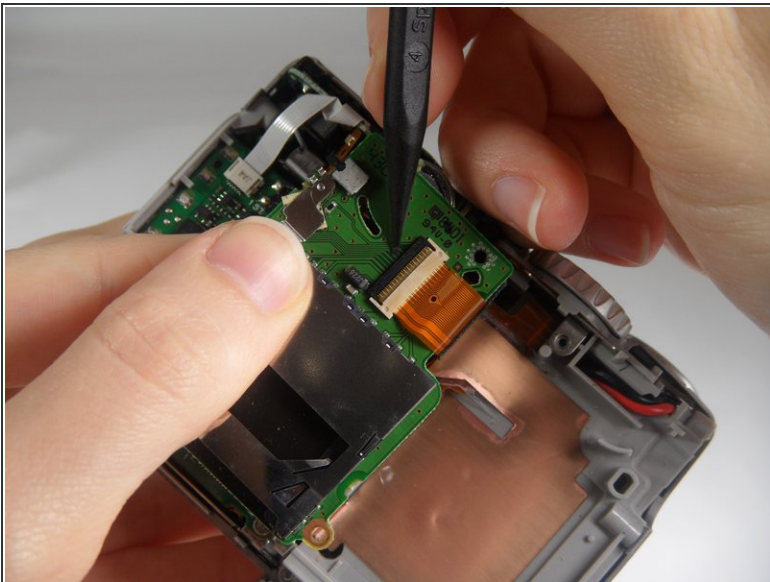
- Gently pull the big ribbon out.
 - Gently pull the small ribbon out.
- i** The small ribbon does not have a bar like the big ribbon.

Step 9



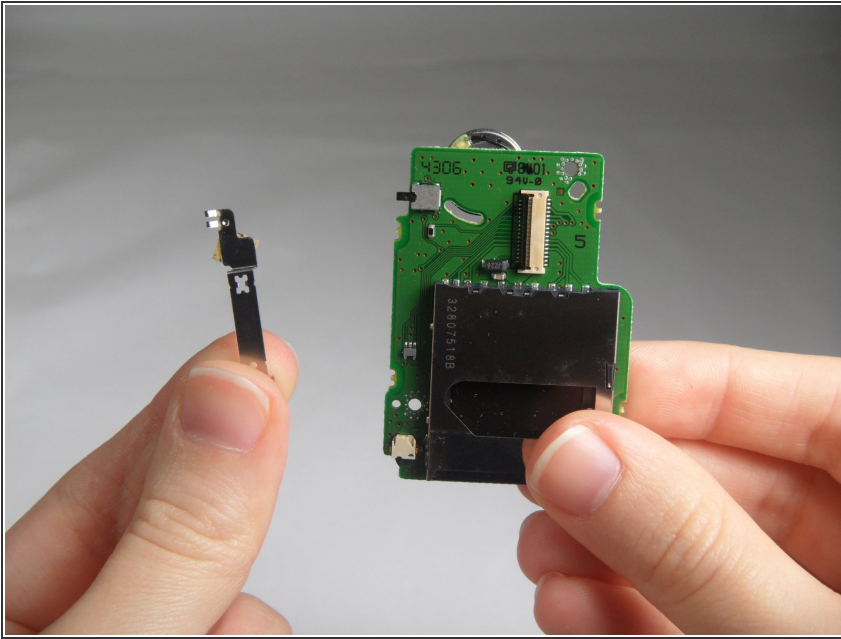
- Remove the two (2) 3.0 mm screws shown with the Phillips head #000 screwdriver.

Step 10



- Remove the ribbon from the clamp/bar securing it by using your tweezers to pull the bar up.

Step 11



- Remove the SD Card reader and replace.
- ⓘ There is another metal bar that comes off of the SD Card reader when screws are removed.

To reassemble your device, follow these instructions in reverse order.