



APEX AP-GS918 Power/Volume Button Replacement

A short guide on replacing the plastic buttons if they become damaged.

Written By: Christopher Wright



INTRODUCTION

In this guide, you will learn the placement of the screws holding the lid together along with a description of how to properly open up the device and remove the power/volume buttons.



TOOLS:

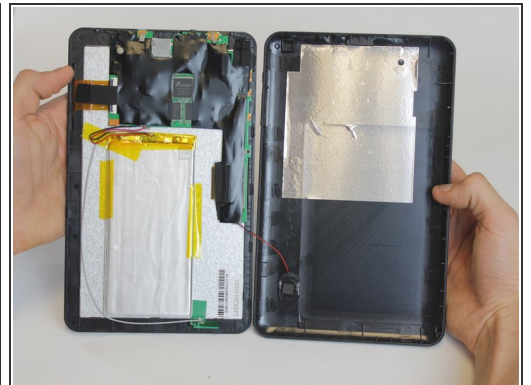
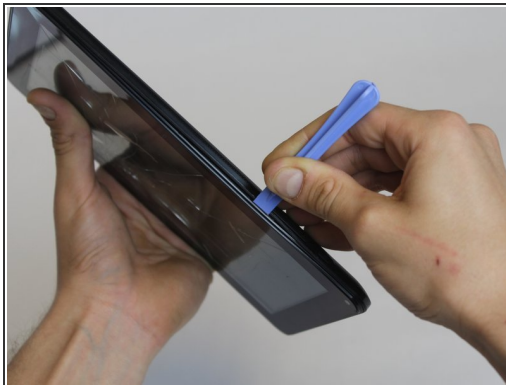
- [Phillips #00 Screwdriver](#) (1)
 - [Tweezers](#) (1)
 - [iFixit Opening Tools](#) (1)
-

Step 1 — Power/Volume Button



- To begin, locate the two 4.9mm Phillips #00 screws at the top corners of the case and remove them.

Step 2



- Squeeze the plastic opening tool in between the seam where the screen joins the plastic case.
- Begin separating the bottom of the case from the screen by carefully going around the whole edge of the case and slowly prying it apart.

⚠ Be careful when separating the lids because the wires holding the speaker to the motherboard are very short.

Step 3



- Carefully place the bottom lid next to the screen case. The power/speaker buttons should be visible at the corner of the lid. Remove the buttons with the tweezers.

To reassemble your device, follow these instructions in reverse order.