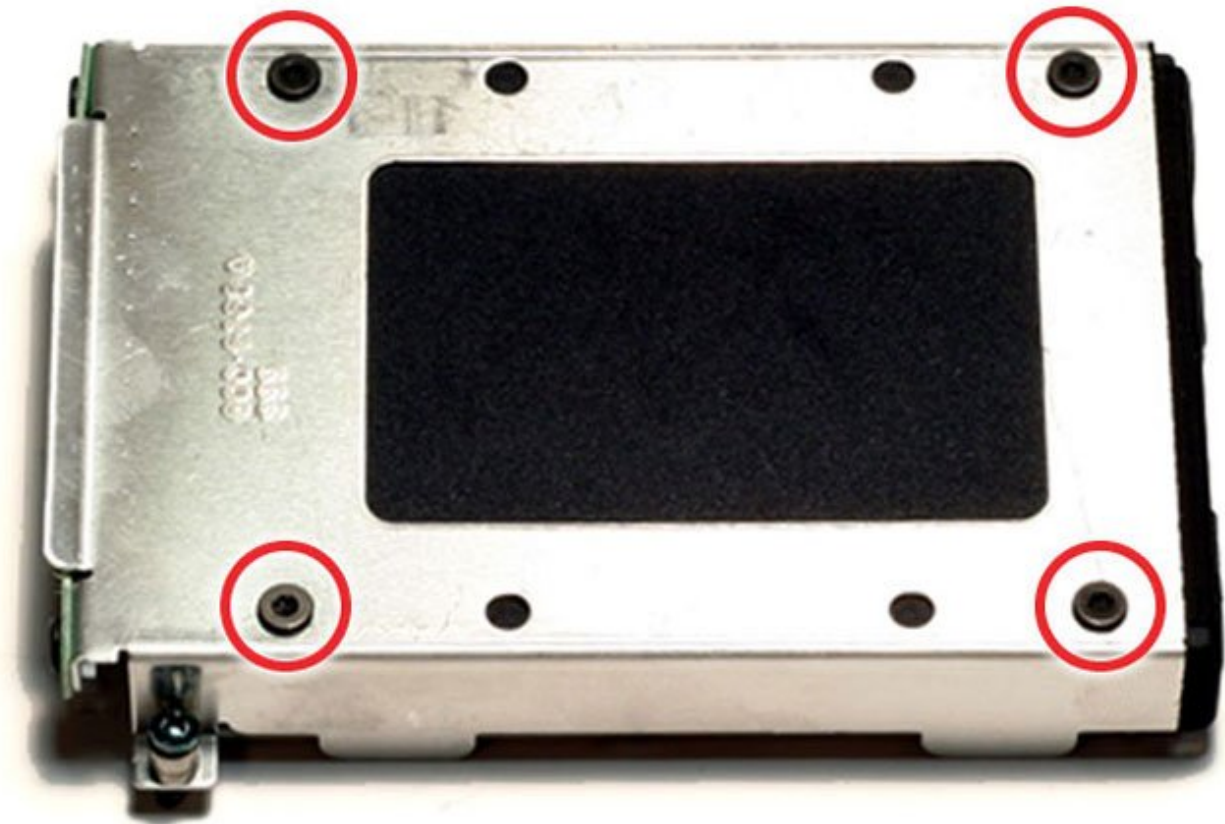




PowerBook G3 Wallstreet Hard Drive Replacement

Replace the hard drive in your PowerBook G3 Wallstreet.

Written By: iRobot



INTRODUCTION

You can install hard drives up to 17mm thick, twice as thick as a slim 9.5mm drive.



TOOLS:

- [Phillips #0 Screwdriver](#) (1)
- [T8 Torx Screwdriver](#) (1)



PARTS:

- [120 GB 5400 RPM Western Digital ATA Hard Drive \(New\)](#) (1)
- [G3 WallStreet Hard Drive Bracket](#) (1)

Step 1 — Keyboard



- Remove both expansion bay modules using the levers on the front of the computer.
- Insert your index fingers inside the expansion bays and search for the two ribbed tabs on the underside of the upper case. The tabs are located near the bottom corners of the keyboard.
- Pull the tabs toward yourself and the keyboard will pop up.


Step 2



- Pull the keyboard forward to disengage the tabs holding it in back and rotate it toward you.
- Rest the keyboard on the trackpad.

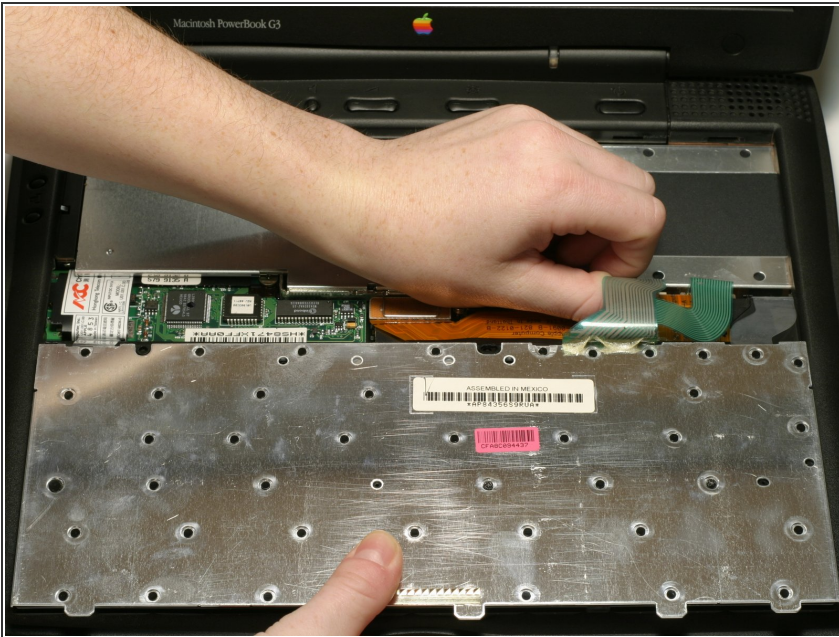
Step 3



 This is a diagram of the ribbon clamp connectors you will disconnect in the next step.

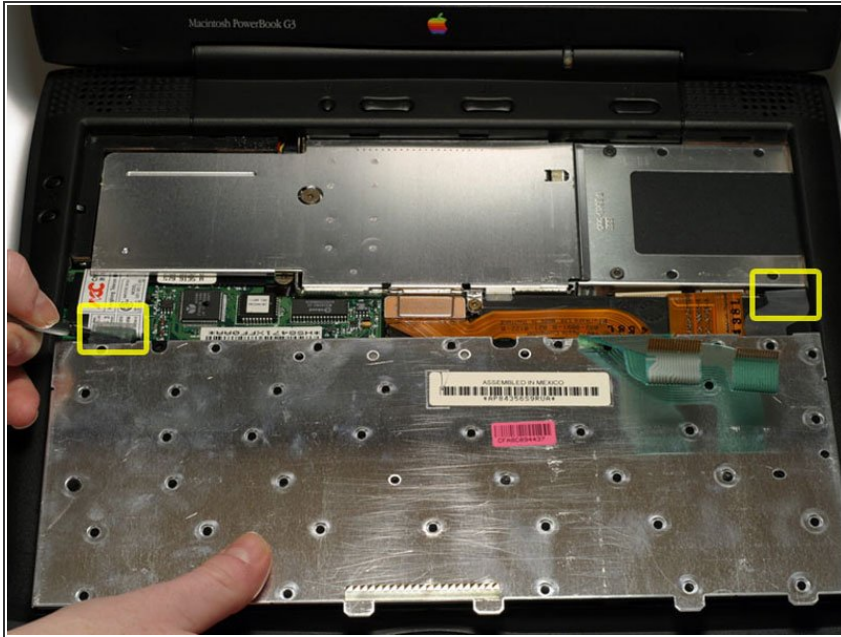
- 1) With your fingernails, grasp the locking bar on either side and pull up a small amount (about 1/16" or 2 mm).
- 2) After disengaging the locking bar, slide the cable out of the connector.

Step 4



- Disconnect the two keyboard connectors by disengaging the clamps and pulling the ribbons directly upward.

Step 5



- Slide a spudger downward between each plastic strain relief cable and the wall of the case in order to bow out the cable beyond the small tab holding it in place.
- Once the strain relief cables are free, lift the keyboard off.

Step 6



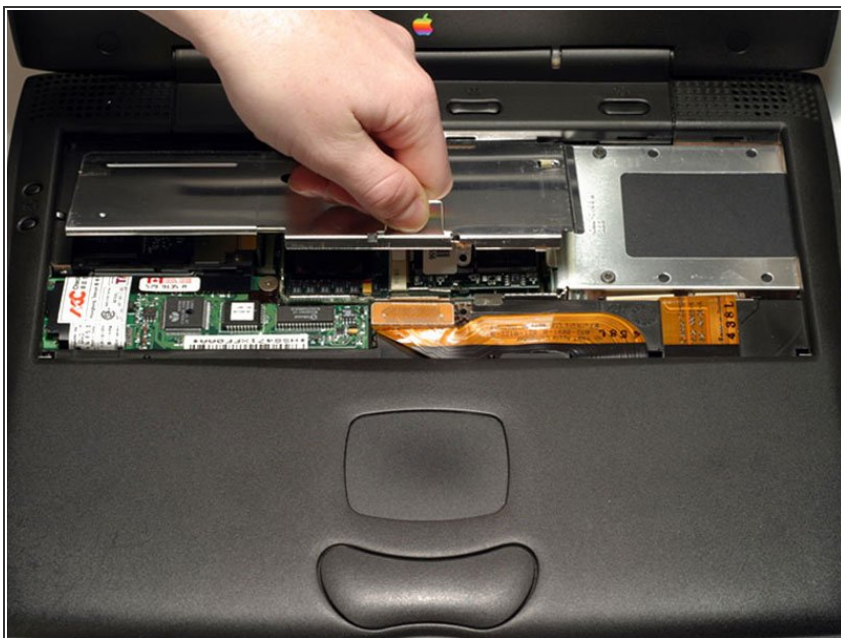
- Your laptop should look approximately like this.

Step 7 — Heat Shield



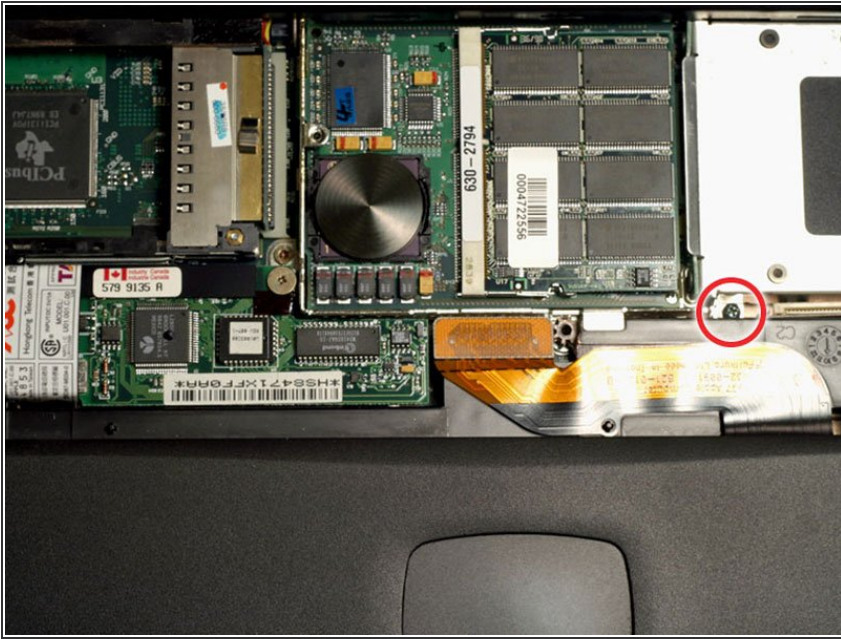
- Remove the two Phillips screws from the heat shield.
- ☑ One screw is shorter than the other. When putting the Wallstreet back together, this screw goes in the middle of the heat shield.

Step 8



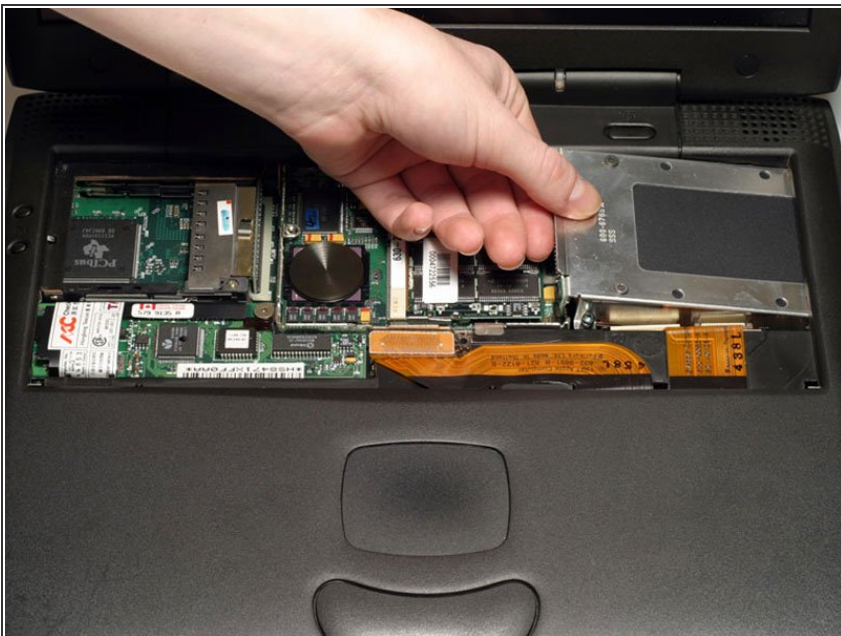
- Grasp the metal handle on the heat shield and pull up and toward yourself.

Step 9 — Hard Drive



- Unscrew, but do not remove, the single Phillips screw from the hard drive bracket.

Step 10



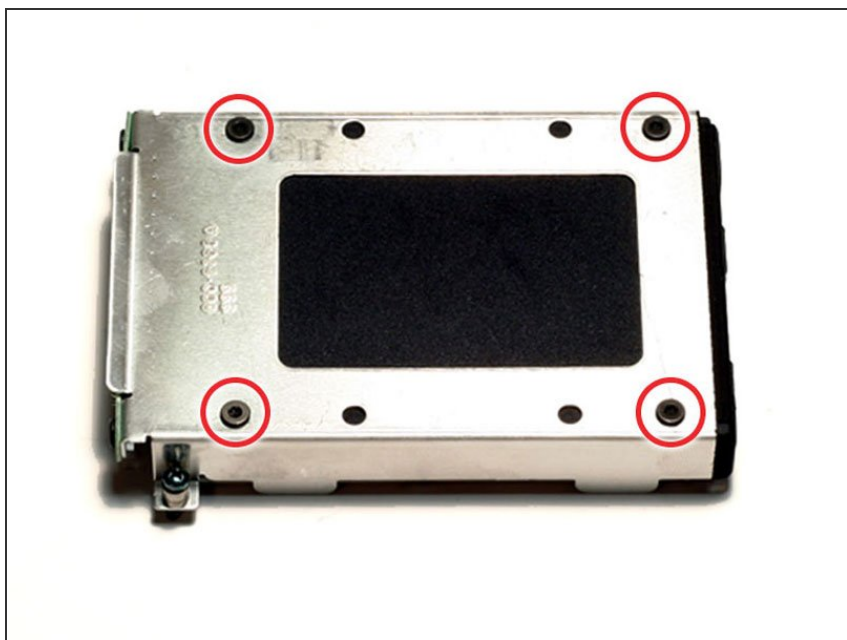
- Grasp the hard drive bracket on the left side and pull up and to the left.

Step 11



- Your laptop should look approximately like this.

Step 12 — Hard Drive



- Remove the four T8 Torx screws from the hard drive bracket.

Step 13



- Turn the hard drive bracket over.
- Hold the hard drive bracket at the connector end and grasp the opposite end of the hard drive.
- Pull the hard drive out of the bracket, making sure to pull evenly on both sides.

To reassemble your device, follow these instructions in reverse order.