



Canon Powershot SD750 Camera Case Replacement

This guide helps you replace the camera casing.

Written By: Memphis Wong



INTRODUCTION

You will need a #00 Phillips screwdriver to replace the camera's casing.

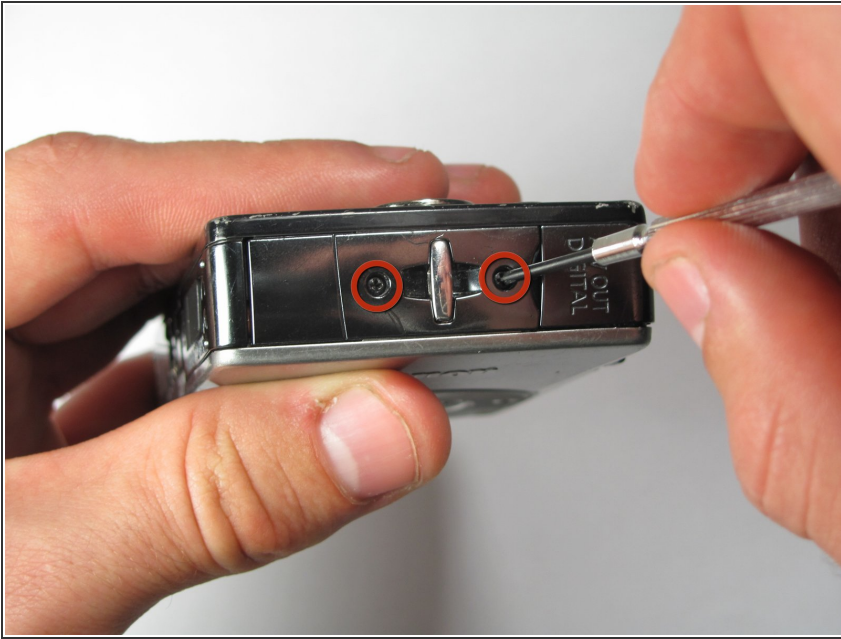
Make sure to remove the batteries before beginning the guide.



TOOLS:

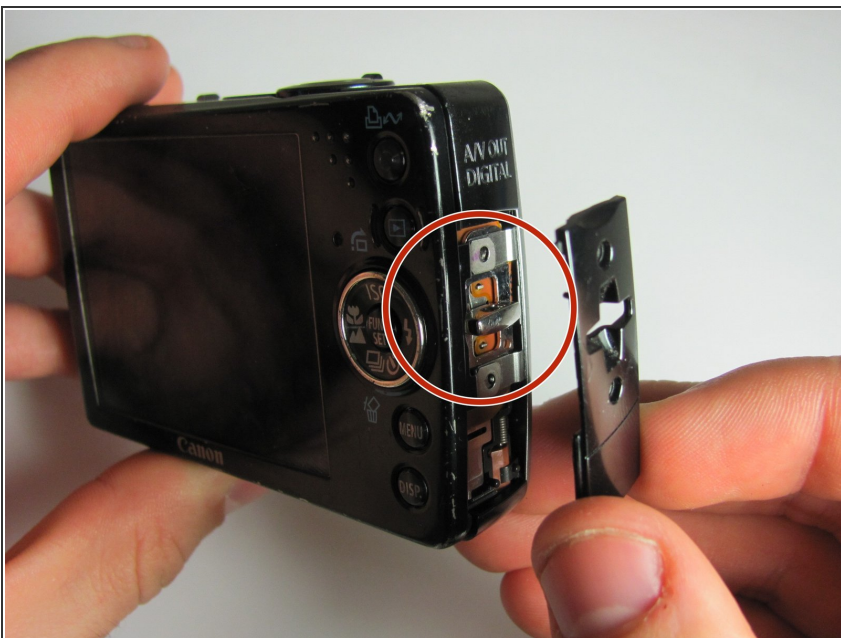
- [Phillips #00 Screwdriver](#) (1)
-

Step 1 — Camera Case



- Turn the camera to the side that has the attachment for the wrist strap.
- Unscrew the two black 3.4 mm screws with a #00 Phillips screwdriver.

Step 2



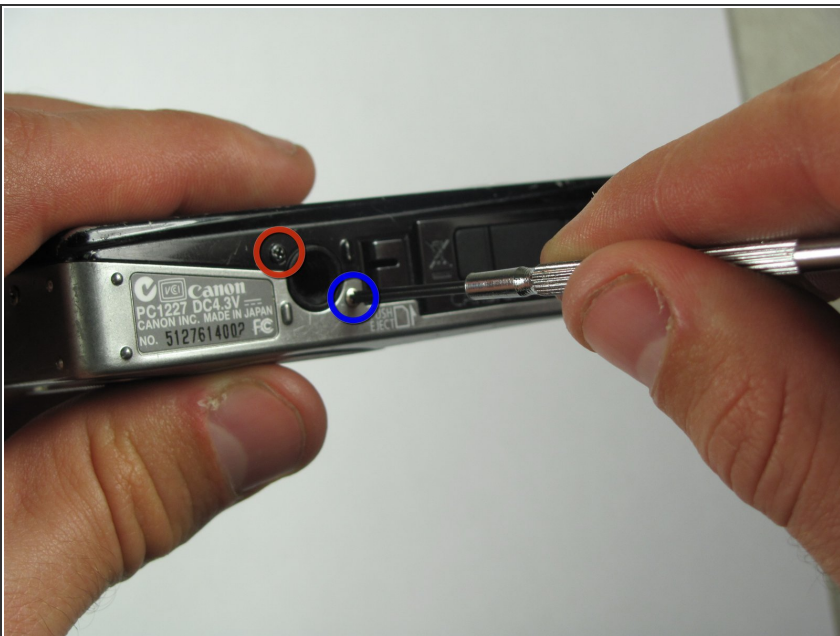
- Remove the plastic subsection by prying it with your fingers.
- ⓘ Note: It may be helpful to pry from the bottom of the camera with the battery door open.
- The wrist strap attachment behind the subsection will come loose and may fall out.

Step 3



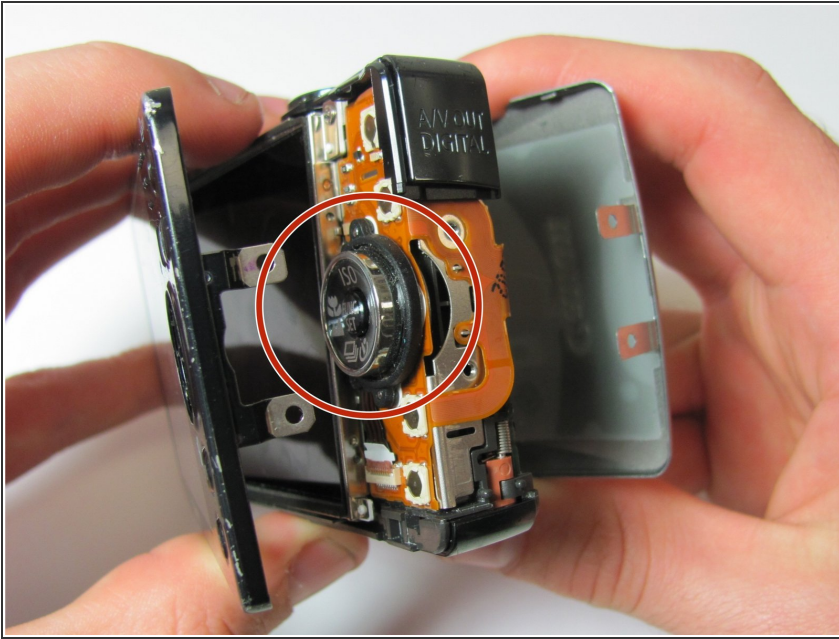
- Turn the camera over to the side opposite of the wrist strap.
- Remove the two silver 3.4 mm screws with a #00 Phillips screwdriver.

Step 4



- Flip the camera upside down.
- Remove the following screws with a #00 Phillips screwdriver.
 - One black 3.4 mm Phillips screw.
 - One silver 3.4 mm Phillips screw.
- ① NOTE: Using your fingernails may help in removal.

Step 5



- Place the camera on the side opposite of the wrist strap handle.
- Then begin to pry the casing apart with both hands by applying pressure to the top and bottom of the camera.
- Remove the small metal plate underneath the plastic covering and set aside. (It should be loosely attached)

ⓘ Note: A rubber foam washer that separates the lens from the casing will fall off when the case is removed. Be sure to store it safely.

ⓘ Note: When reassembling ensure the back plate screw tabs are over the wrist strap attachment and the front plate screw tabs go under orange casing.

To reassemble your device, follow these instructions in reverse order.