



# Lenovo Yoga 2 13" Battery Replacement

This guide explains to how safely locate and...

Written By: Nichelle



# INTRODUCTION

This guide explains to how safely locate and remove the battery from your Lenovo Yoga 2 13". It provides a list of the tools required, as well as the easiest way to remove the battery without causing damage.

**For your safety, discharge your battery below 25% before disassembling your device.** This reduces the risk of a dangerous thermal event if the battery is accidentally damaged during the repair. If your battery is swollen, [take appropriate precautions](#).

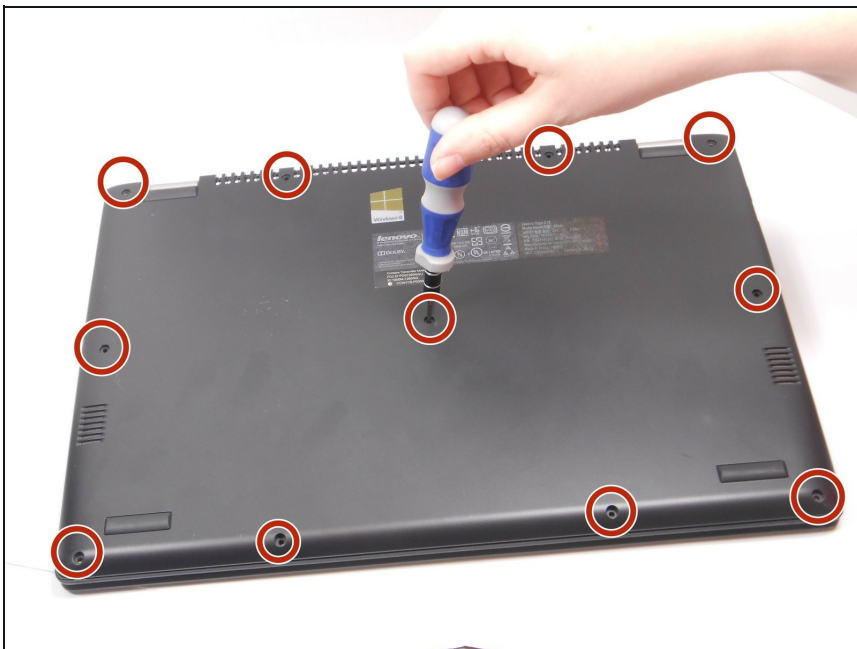
## TOOLS:


Magnetic Project Mat (1)  
T5 Torx Screwdriver (1)  
Phillips #0 Screwdriver (1)

## PARTS:

Lenovo IdeaPad Yoga 2 Battery (1)

## Step 1 — Back Panel



-  Be sure to power off and unplug your device before you begin your repair.
- With a T5 Torx screwdriver, remove eleven 6.35 mm screws from the back of the laptop.

## Step 2



- Carefully separate back panel from the laptop.

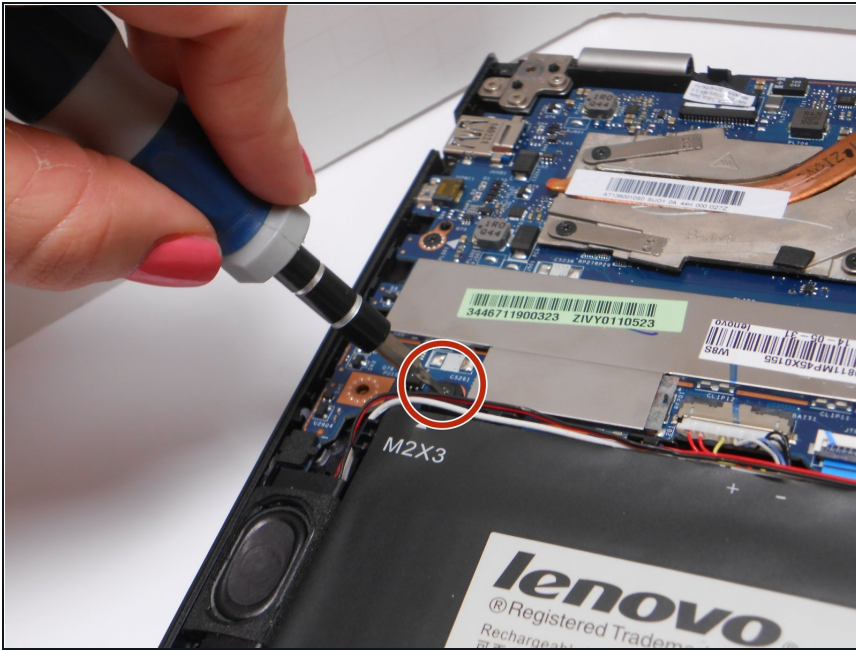
## Step 3 — Battery



- Locate the battery of the laptop.

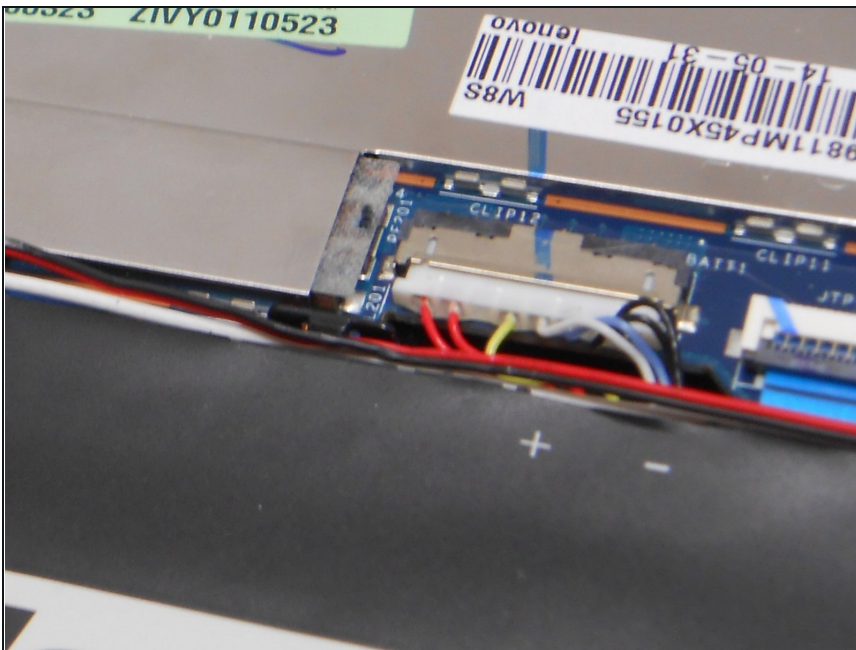


## Step 4



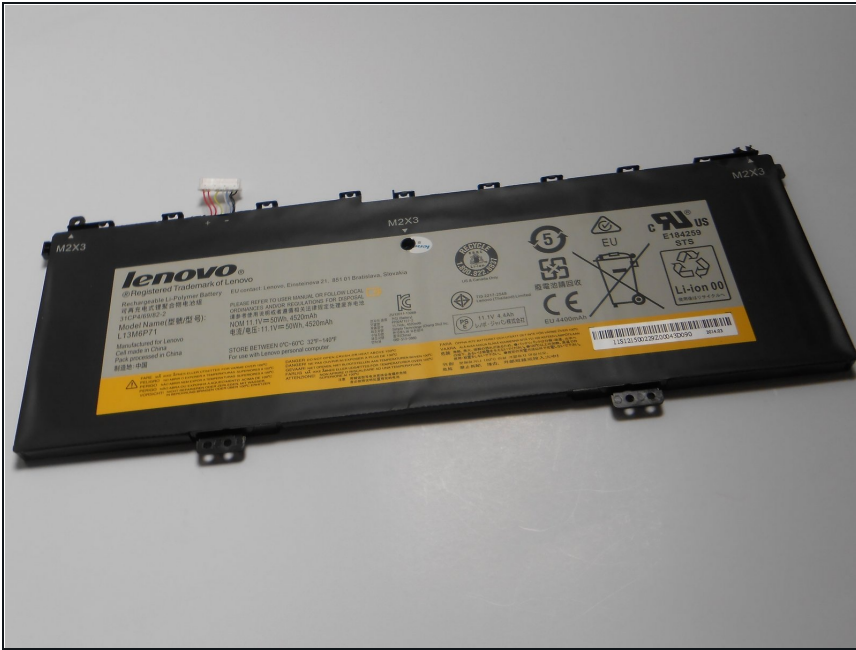
- To remove the battery, use a Phillips head screwdriver to unscrew three 3.175 mm screws. One will be in the center of the battery (covered by a Lenovo sticker) and the other two are in the corners.

## Step 5



- Disconnect the battery from the laptop by pulling the power connector towards the battery.
  - ① Pull parallel to the battery, not straight up.

## Step 6



- Once all wires are unattached to the rest of the computer, remove the battery from the laptop and replace.

To reassemble your device, follow these instructions in reverse order.