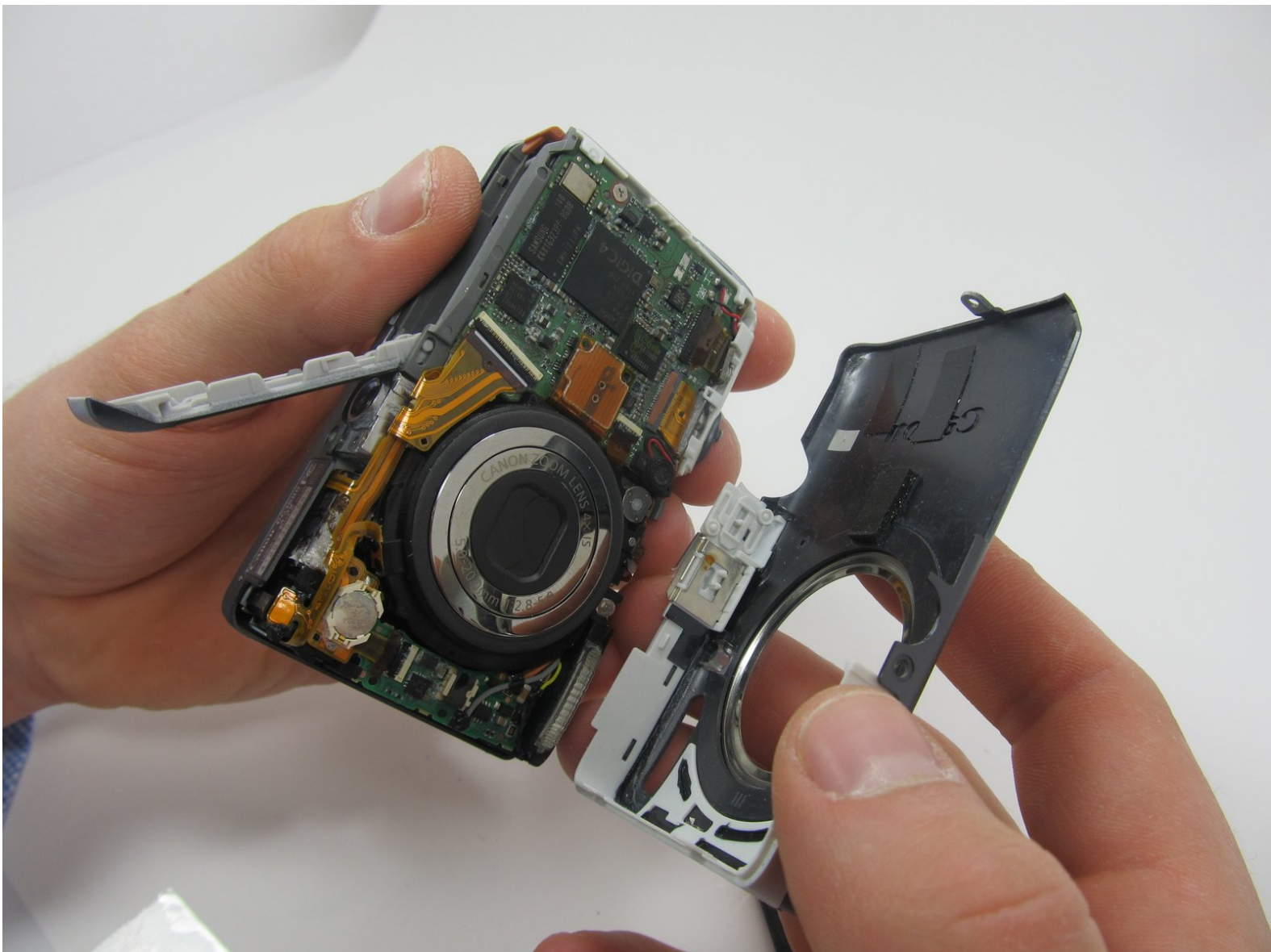




Canon Powershot ELPH 100 HS Outer Case Replacement

This guide will show you how to remove the outer shell of the the powershot ELPH 100 HS camera. This guide will also serve a prerequisite to others.

Written By: Jacob



INTRODUCTION

Hello everyone, this step by step guide will hep you put a new outer case replacement on your Canon Powershot ELPH 100 HS!



TOOLS:

- [Phillips #00 Screwdriver](#) (1)
 - [Spudger](#) (1)
-

Step 1 — Outer Case



- Using the Phillips #00 screwdriver, remove the two 3.1mm screws from the bottom of the camera.
- ★ Keep track of all the screws that are being taken out from the outer case.
- i The display screen of the camera should be facing towards you.

Step 2



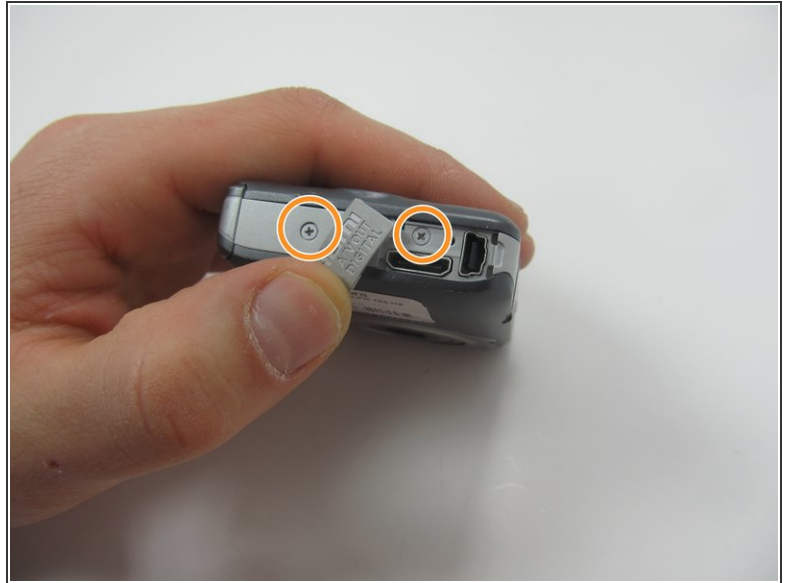
- Ensure that the screen is facing you, and then rotate it till you see the screws on the side of the camera.
- Use the Phillips #00 screwdriver to remove the two 3.1 mm screws.


Step 3



- With the screen still facing you, rotate the camera 180 degrees.
- ⓘ The side with the charging port should now be facing up.

Step 4



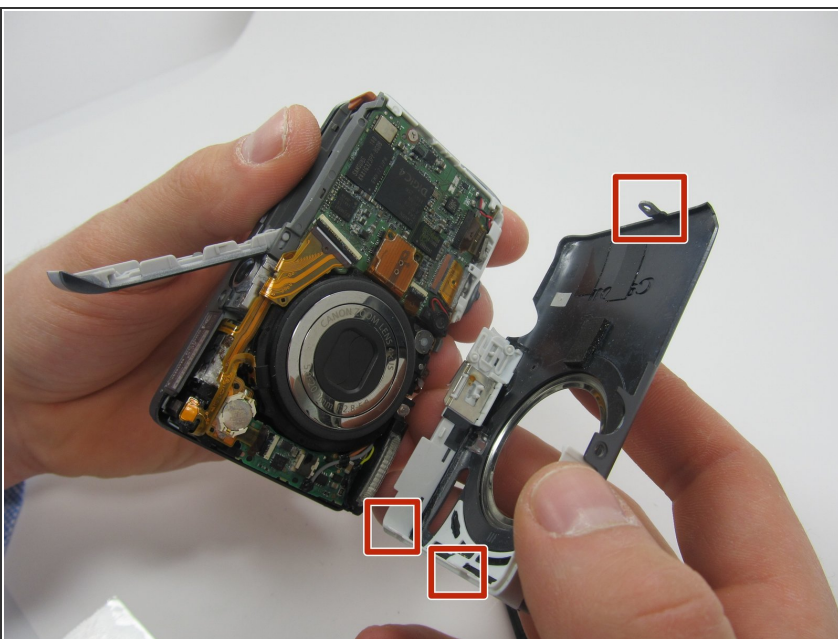
- Use the Philips #00 screwdriver to pry open the charging port cover.
 - Once you pry open the charging port cover, rotate the cover so that you have access to the screw underneath. Which is seen in the next image.
 - Remove both 3.1 mm screws using the Phillips #00 screwdriver.
-  The image still shows the screw from step 3 in place.

Step 5



- Turn the camera so the bottom is once again facing up.
- With the battery door still open, use a spudger to remove the cover from the front of the camera.
- ⓘ Carefully go around all of the edges until the cover is released.

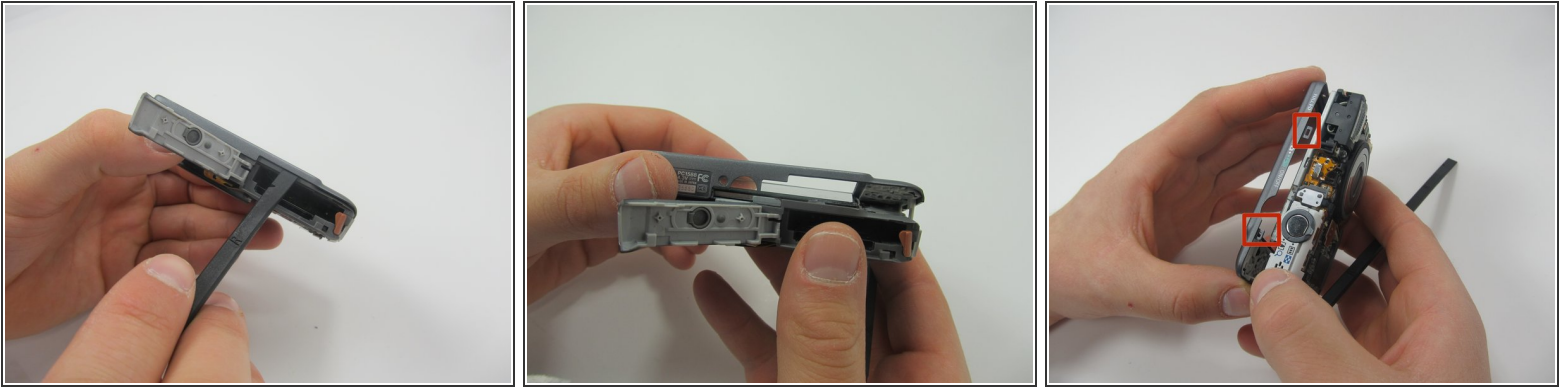
Step 6



- Once the entire front cover has been released carefully pull it off.

⚠ Be careful not to break the tabs that hold it in place.

Step 7



- Just like Step 4-6 , carefully use the Spudger to remove the back cover.
- ⓘ Go along all the borders of the back cover so that it releases from the camera safely.
- ⚠ Be careful not to break the tabs.

To reassemble your device, follow these instructions in reverse order.