



Disassembling IBM WorkPad c3 Front Case

Instructions on how to remove the front side of the IBM WorkPad c3 outer shell.

Written By: Emily Falkenstein



INTRODUCTION

This guide will present easy, step by step instructions on how to remove the front side of the IBM WorkPad c3 case. This case is glued together, so time will need to be spent heating the glue. This time varies, but you should expect to spend at least 10 minutes heating.



TOOLS:

- [Heat Gun](#) (1)
 - [iFixit Opening Tools](#) (1)
-

Step 1 — Back Case



- Turn the device over so that the screen is facing down.

⚠ In the next step the device will be heated, so the screen must be turned over to prevent heat damage to the LCD/Digitizer.

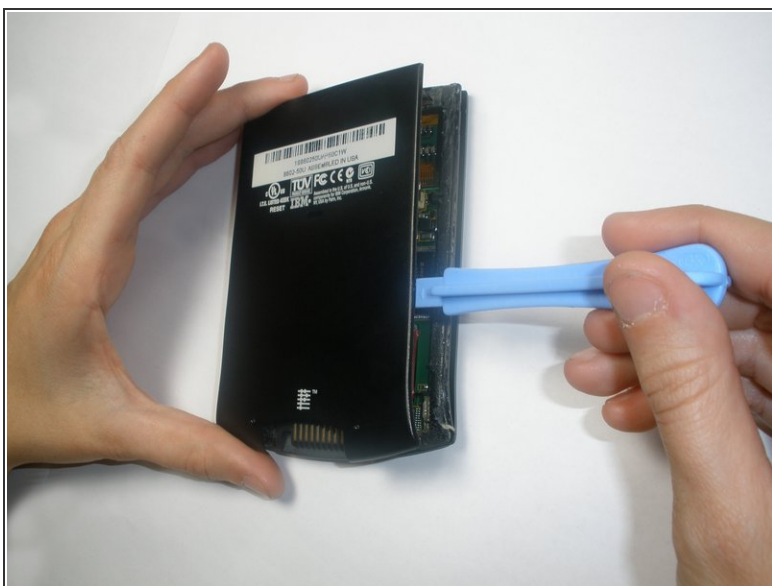
Step 2



- Using a hair dryer, slowly heat the edges of the WorkPad.
- Spend at least one minute heating each side of the device. This will melt the glue holding the case together, and allow it to be removed.

⚠ Be sure not to touch the device directly after heating as it will be extremely hot. Use a towel or oven mitt to grab it.

Step 3



- Use a plastic opening tool to pry the back case from the WorkPad.
- ⓘ If the rear cover is not coming off very easily, you probably need to reheat the case in order to sufficiently melt the glue.

Step 4 — Front Case



- Turn the device over, so that the screen is laying on a flat surface.


Step 5




- If the back case has already been removed, carefully place it on the WorkPad to protect the circuitry inside from the heat.
 - Using the hair dryer, slowly heat the edges of the device. Spend at least 1 minute on each side, thoroughly heating the case.
- ⚠ The LCD/Digitizer combo is very sensitive to heat, and can easily be ruined if it is directly exposed to the hair dryer. Verify that the screen is face down.

Step 6



 The device will be extremely hot. Use a towel or oven mitt to grab it.

- Using the Plastic Opening Tools, take the front of the case off.

 If the case is difficult to remove, try repeating step 2.

- The power button at the top of the device will be loose once the front part of the case is removed.

To reassemble your device, follow these instructions in reverse order.