



Samsung Galaxy S6 Teardown

How to teardown the Samsung Galaxy S6.

Written By: Mandy



INTRODUCTION

[For iFixit's official Galaxy S6 teardown, click here](#). The guide you are currently viewing is retained for historical purposes only.

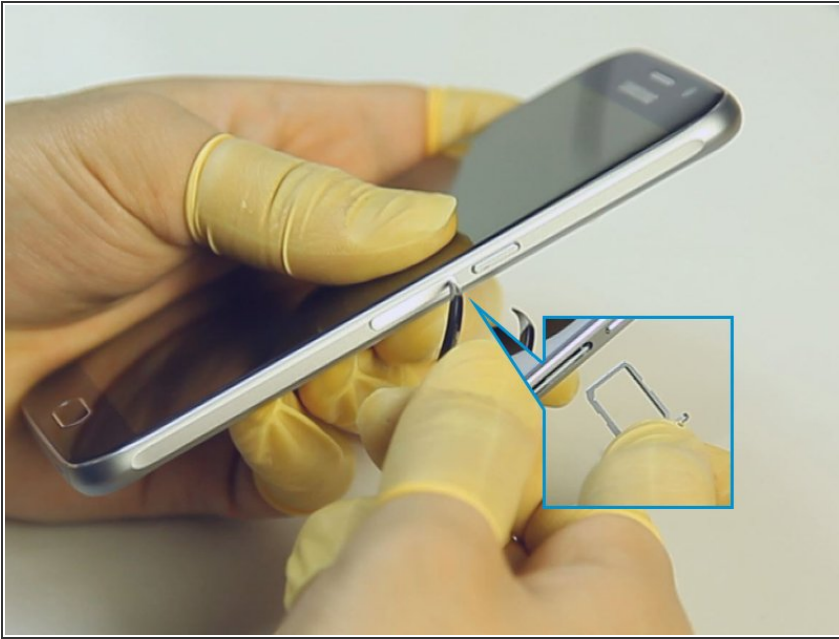
[video: https://youtu.be/_rXLJ2uJWnw]



TOOLS:

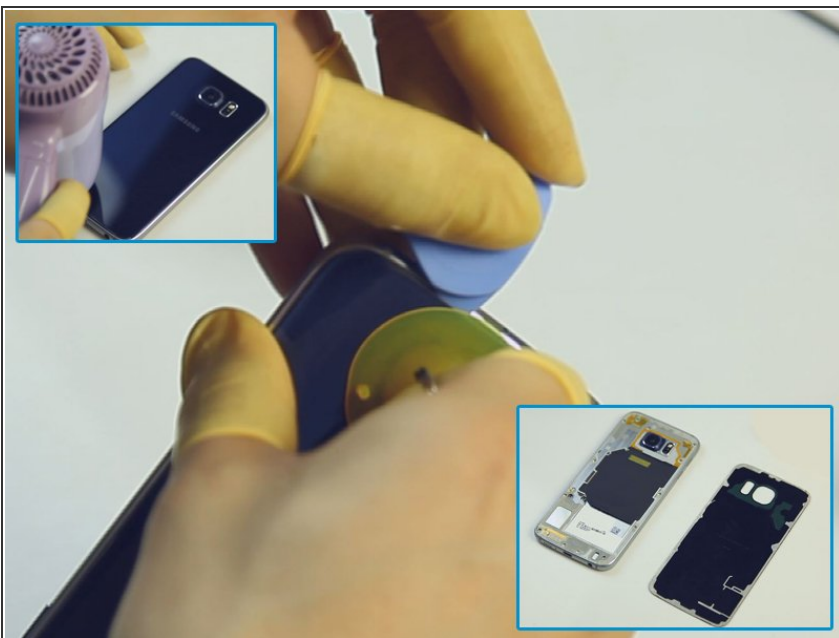
- [SIM Card Eject Tool](#) (1)
 - [Heat Gun](#) (1)
 - [Suction Handle](#) (1)
 - [iFixit Opening Picks set of 6](#) (1)
 - [Tweezers](#) (1)
 - [Spudger](#) (1)
-

Step 1 — Take Out The SIM Card Tray.



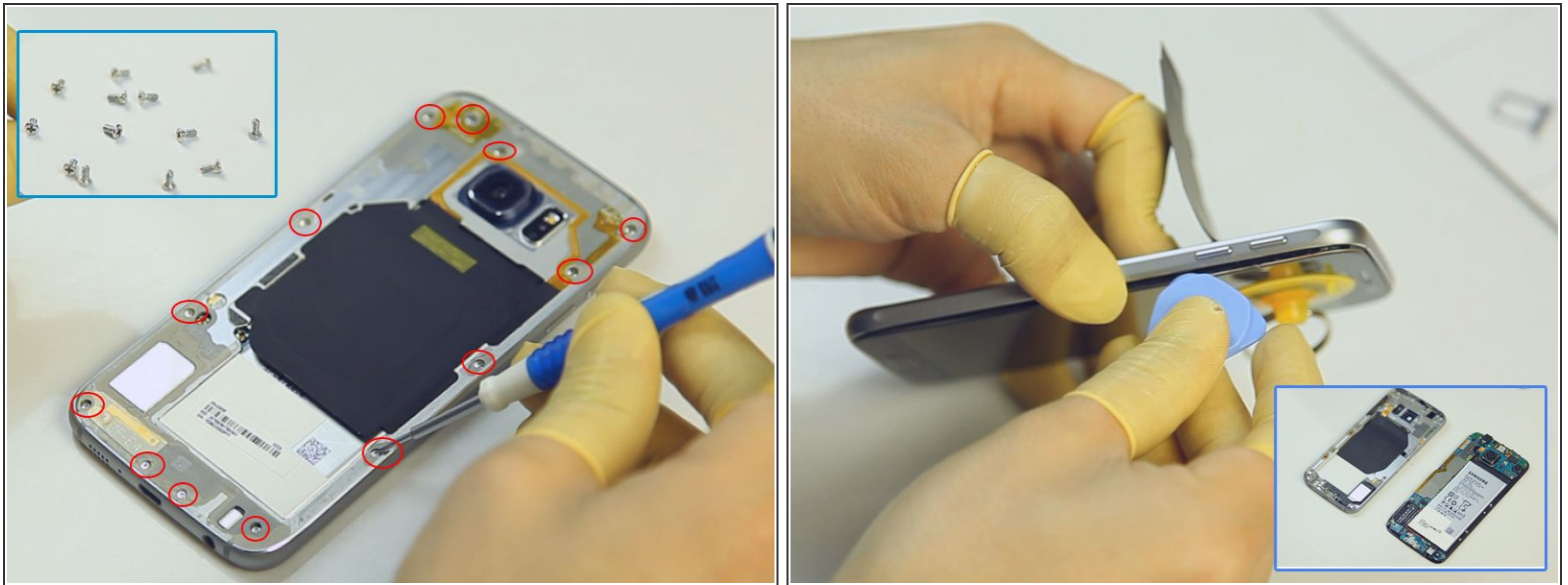
- Power off the Samsung Galaxy S6.
- Use an eject pin or pointed tweezers to take out the SIM Card Tray.

Step 2 — Take Apart The Battery Door.



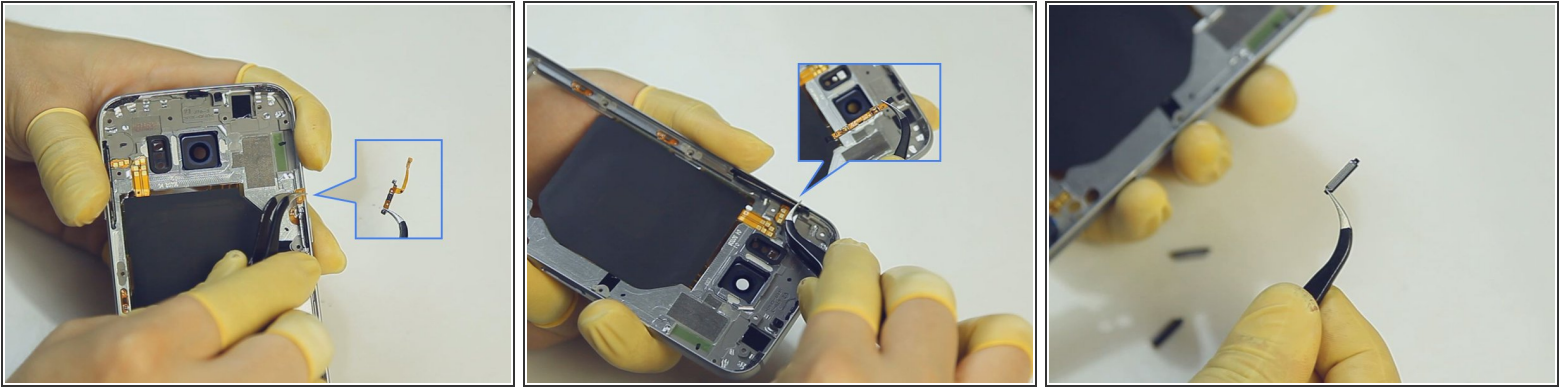
- Heat up the Samsung Galaxy S6 Battery Door.
- Draw the battery cover up with a suction cup. (Note: The battery door is adhered to the rear housing with quite strong adhesive, take your time during this process.)
- Separate the battery door with an opening pick.

Step 3 — Release The Rear Housing.



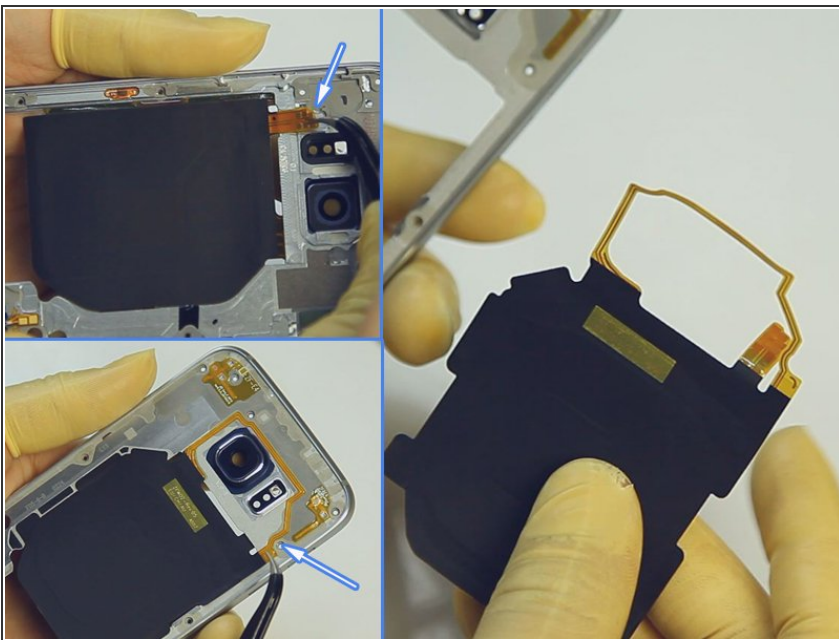
- Undo the 13 screws in the rear housing.
- Heat up the LCD Assembly.
- Separate the rear housing from the LCD Assembly with the help of suction cup tool and case opening tool. (Notice: be careful not to damage the wireless charging chip attached to the battery.)

Step 4 — Release The Side Keys.



- Remove the power button flex.
- Remove the volume button flex.
- Remove the side keys. (Note: the Galaxy S6 power button and volume buttons are compatible with each other.)

Step 5 — Release The Wireless Charging Chip.



- Pry up the charging chip flex ribbons on both sides of rear housing. (Notice: be careful not to damage the flex ribbons.)

Step 6 — Remove The Motherboard.



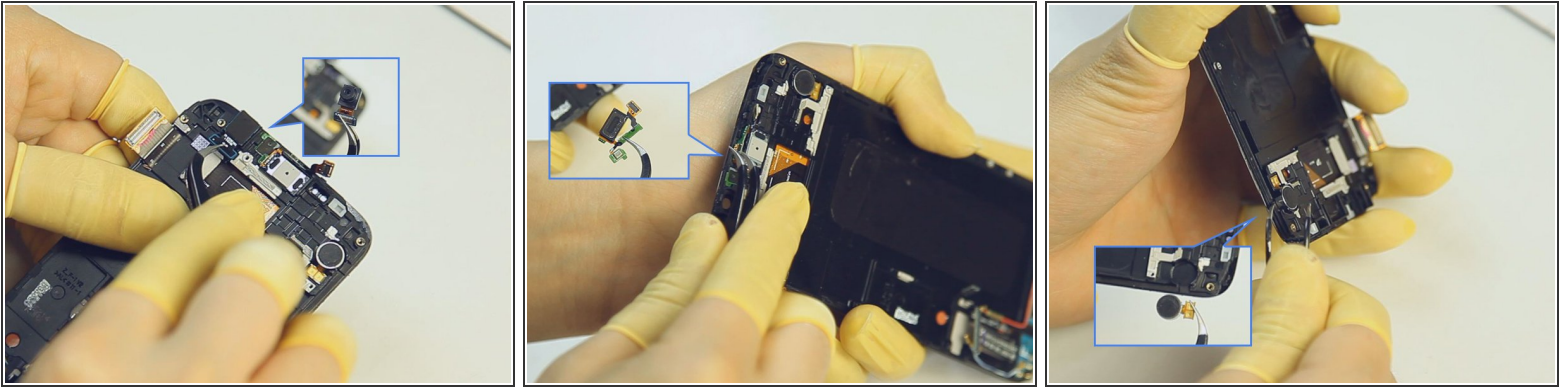
- Pry up the LCD assembly connector, front facing camera connector, battery connector, ear speaker connector and home button flex ribbon connector.
- Turn over the motherboard and pry up the connector.

Step 7 — Remove The Battery.



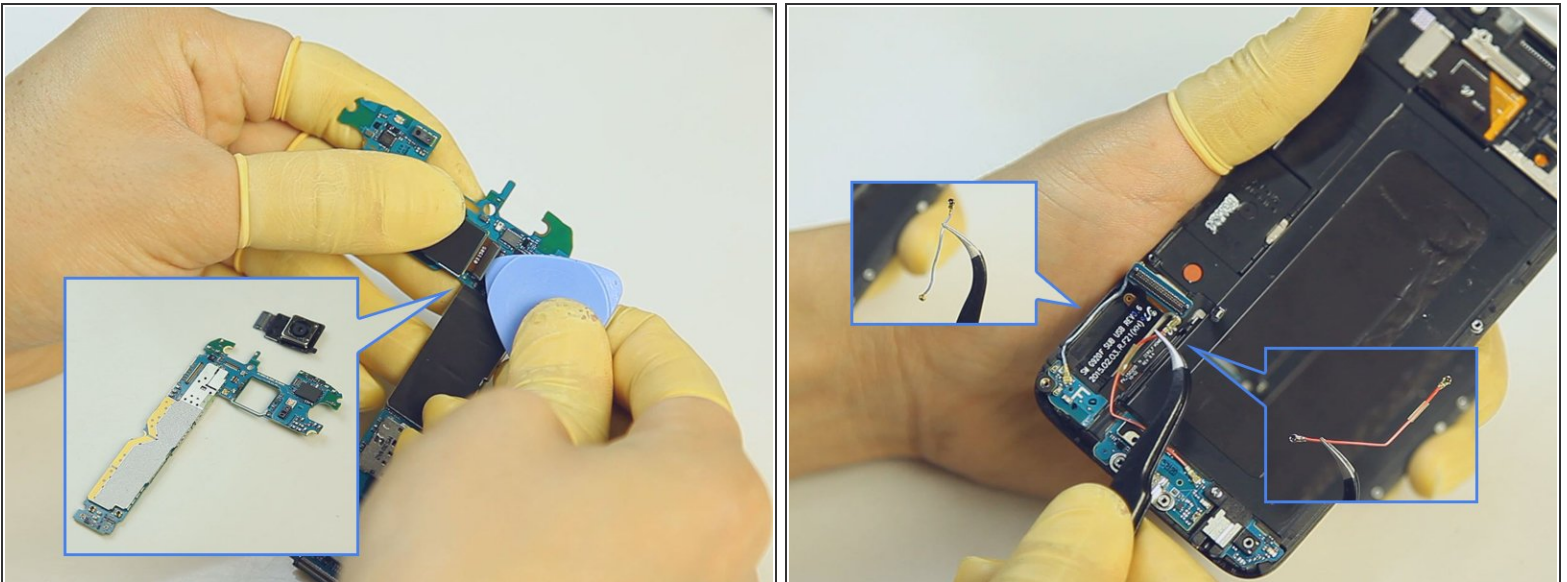
- Gently pry up the battery with a spudger.

Step 8 — Release The Front Housing Small Parts.



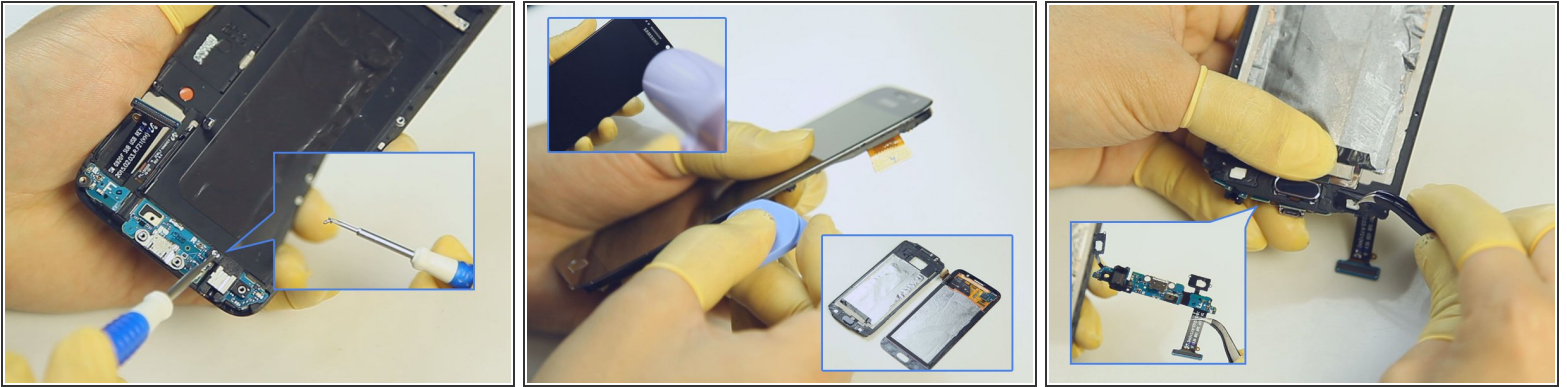
- Remove the front facing camera.
- Remove the ear speaker. (Notice: be careful not to break the flex ribbon.)
- Remove the vibrating motor.

Step 9 — Release The Back Camera And Signal Cables.



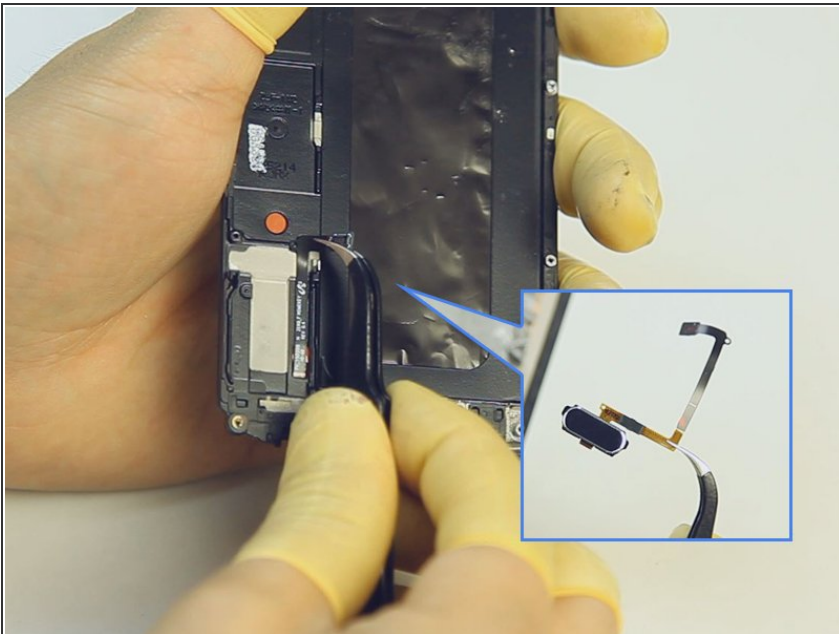
- Remove the back facing camera on the mainboard.
- Remove the Bluetooth cable and Wi-Fi signal cable.

Step 10 — Release The Charging Port Assembly.



- Undo the earphone jack screw. (Notice: the screw is different than the rear housing screws.)
- Heat up the LCD Assembly to release the front housing.
- Pry up the navigation light stickers.

Step 11 — Release The Home Button With Flex.



- Pry up the connector on the back side of home button.
- Pry up the home button.

Step 12 — Finished



- The Samsung Galaxy S6 disassembly process is complete.

To reassemble your device, follow these instructions in reverse order.