



# Xbox One Wireless Controller Top Motherboard Replacement

Before you can access the inner components of...

Written By: Liam Gow



## INTRODUCTION

Before you can access the inner components of the controller, you must remove the top motherboard. This guide will show you how to do this by de-soldering.



### TOOLS:

[TR8 Torx Security Screwdriver](#) (1)  
[T6 Torx Screwdriver](#) (1)  
[Tweezers](#) (1)  
[Soldering Iron 60w Hakko 503F](#) (1)  
[Spudger](#) (1)



### PARTS:

[Xbox One Controller \(1537\) Midframe Assembly](#) (1)

## Step 1 — Battery Pack



- Remove the battery pack cover.
- Remove batteries.

## Step 2 — Side Handles



 We recommend using a nylon spudger for this step. A metal spudger is shown.

- Grip the controller firmly to remove the side handles, wedging a spudger into the seam between the front and handle plates.
- Pry the side plate away from the front plate by moving the spudger back and forth. You will need to do this all the way around the side plate's seam.

### Step 3 — Screws



- ❗ There is a hidden screw located in the middle of the controller behind the label.
- Use a screwdriver and punch a hole directly in the center of the label.
- ❗ You may also lift the label if you do not want to puncture it.
- Remove the five 10mm screws located on the back of the controller using the TR8 **Security** Torx Screwdriver.

### Step 4 — Backplate



- Remove the backplate.

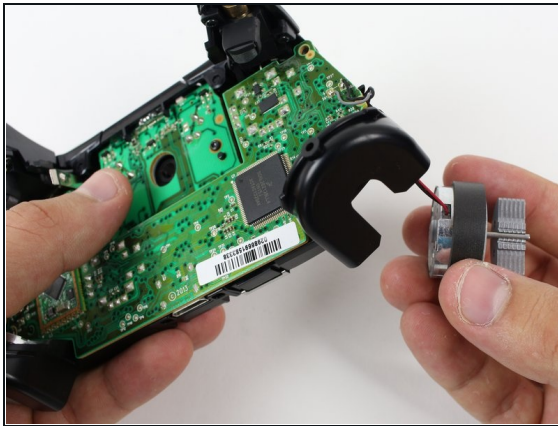
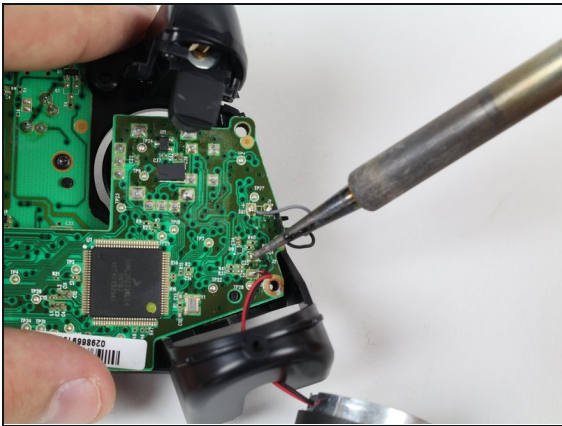


## Step 5 — Faceplate



- Remove the faceplate.


## Step 6 — Top Motherboard



 You may let the rumble motors hang freely out of their sockets.

- De-solder the soldered joints while holding the red and black wires down on the top motherboard.
- De-solder the black and gray wires that are attached to the top motherboard.
- Remove the rumble motors and set them aside.

 Be careful while using the soldering iron not to damage other components or hurt yourself.

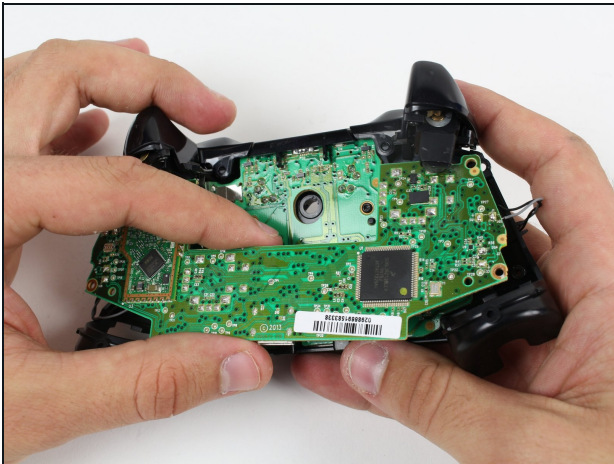
 For information on how to solder, [click here](#).

## Step 7



- Unscrew the two 7mm T6 screws located near the rumble motor sockets.

## Step 8



- Firmly grip sides of motherboard near the middle.
  - Lift upwards while slightly wiggling the motherboard forward and backward.
- i** Lifting the motherboard will require some force.

To reassemble your device, follow these instructions in reverse order.