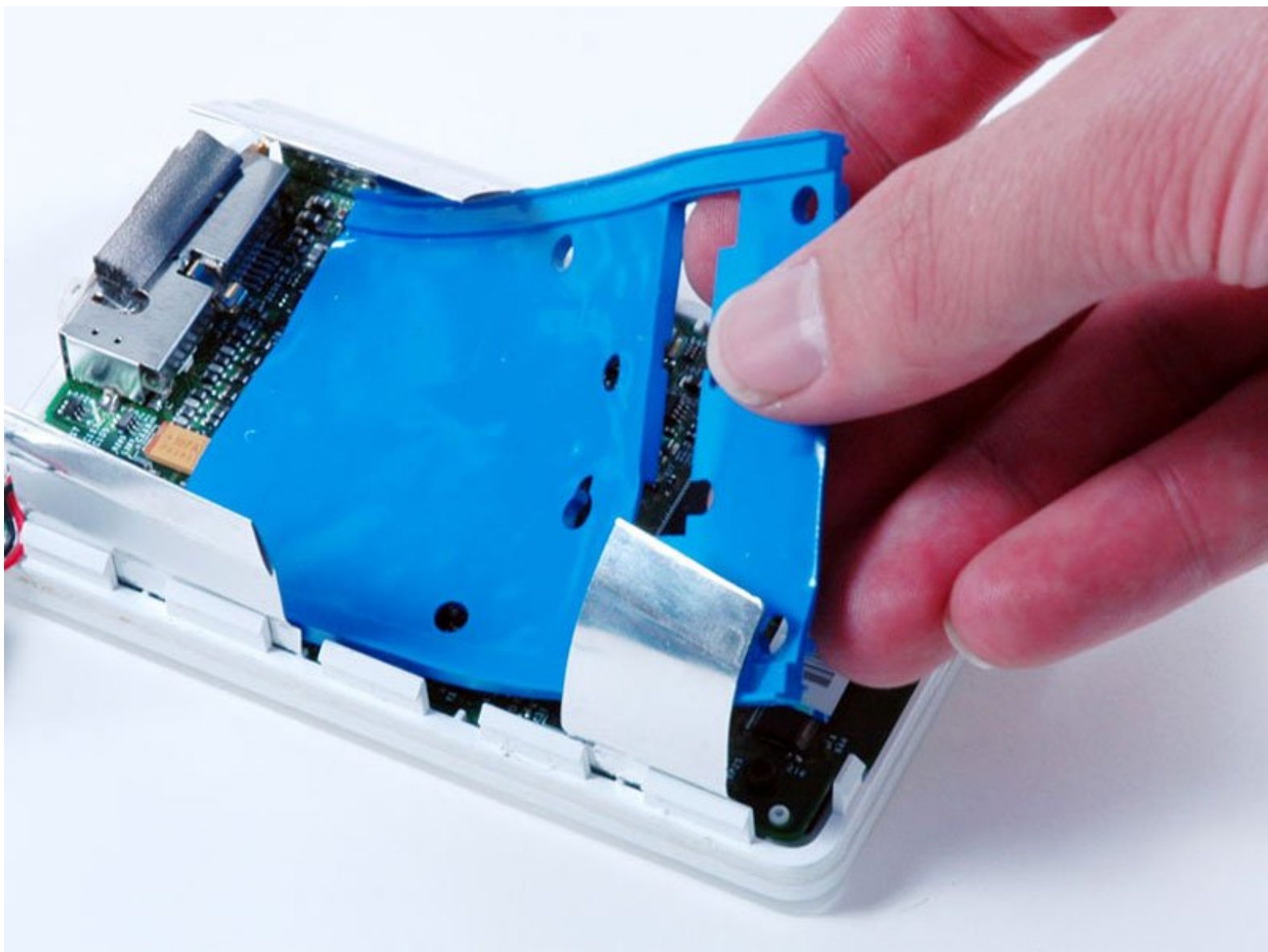




iPod 2nd Generation Touch Wheel Replacement

Written By: iRobot



INTRODUCTION

The touch wheel receives the feedback of your fingers and transmits it to the logic board.



TOOLS:

- [iFixit Opening Tools](#) (1)
- [T6 Torx Screwdriver](#) (1)



PARTS:

- [iPod 2G Touch Wheel](#) (1)

Step 1 — Rear Panel



- ⓘ Before opening your iPod, ensure that the hold switch is in the locked position.

Step 2



- ⓘ Opening the iPod can be challenging. Don't get discouraged if it takes a few tries before the iPod is opened.
- Insert a plastic iPod opening tool in the seam between the white plastic front and metal back of the iPod. Once you've inserted the tool, run it along the seam to free the five tabs holding the iPod together.

Step 3



- Continue to run the opening tool along the side of the case until all five tabs have been released.

Step 4



- Work around the corner of the iPod and release the two tabs holding the iPod together near the dock connector.

Step 5



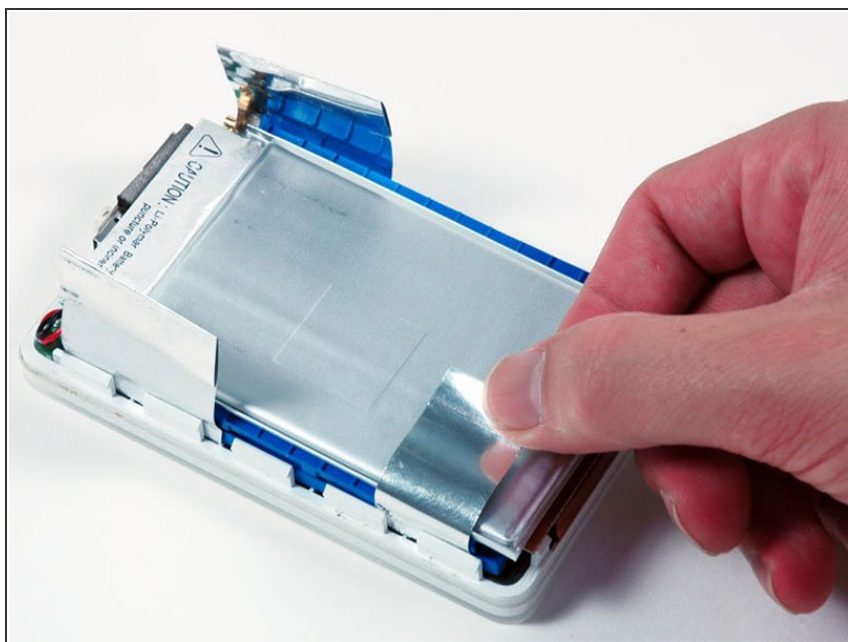
- Free the five tabs holding the iPod together on the other side. You may be able to free the tabs by gently wiggling the front panel of the iPod.

Step 6



- Lift the rear panel away from the iPod, making sure it doesn't catch on the headphone jack.

Step 7 — Hard Drive



- Peel up the metallic tape attached to the top of the battery.

Step 8



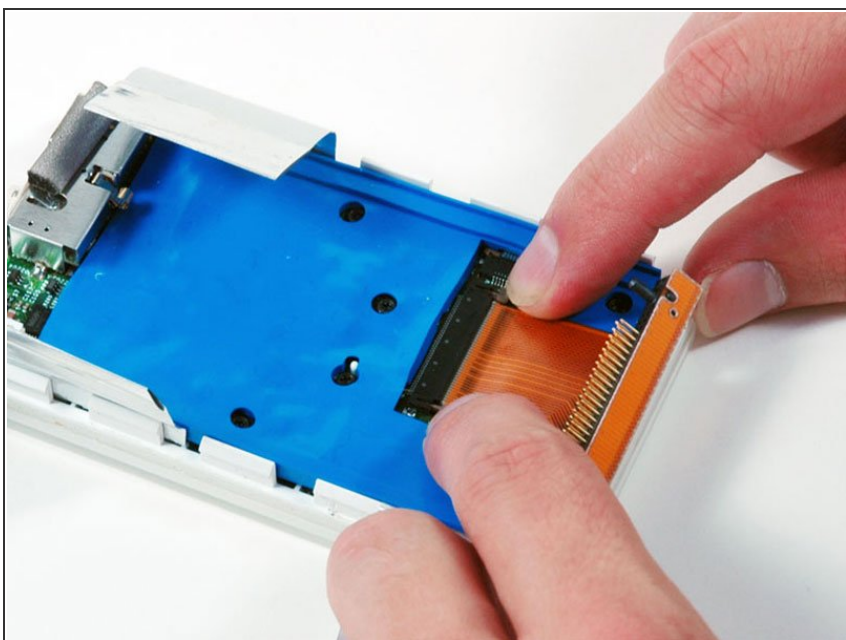
- Lift the battery up from the hard drive and lay it next the the iPod (it is still connected to the logic board).

Step 9



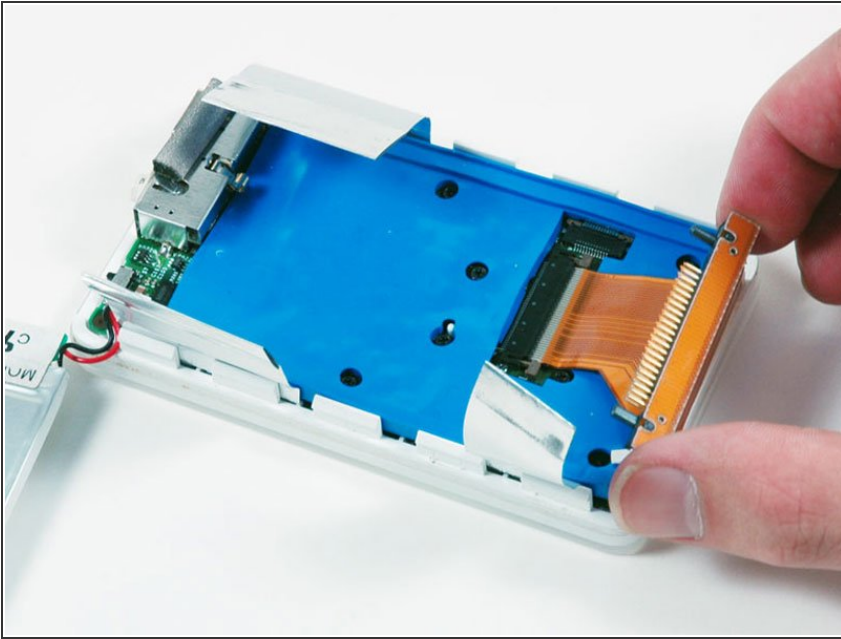
- Carefully disconnect the orange ribbon cable from the hard drive.
- If the cable doesn't come free easily, it may be helpful to gently wiggle the cable from side to side.
- Lift the hard drive out of the iPod.

Step 10 — Hard Drive Cable



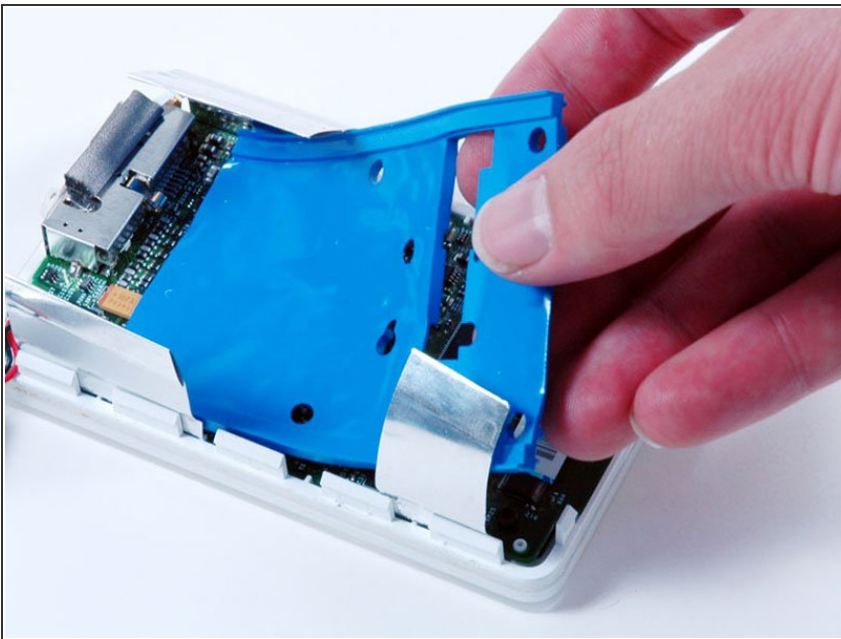
- ❗ For the following step, you only need to move the locking bar about 2 mm. Pushing too hard or too far will damage the connector.
- Loosen the connector by pulling the brown locking bar toward the hard drive cable using the tips of your fingers.

Step 11



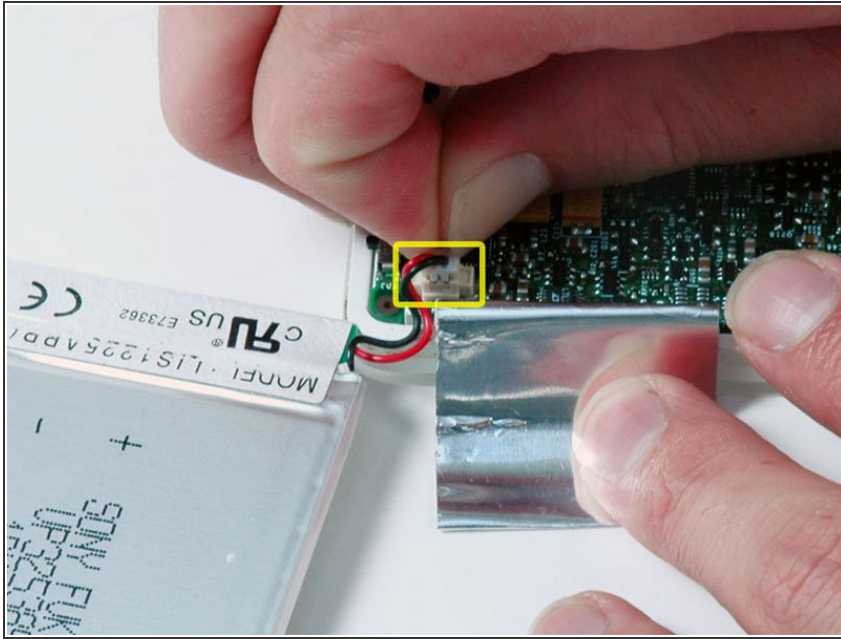
- Slide the hard drive cable out of its connector.

Step 12 — Touch Wheel



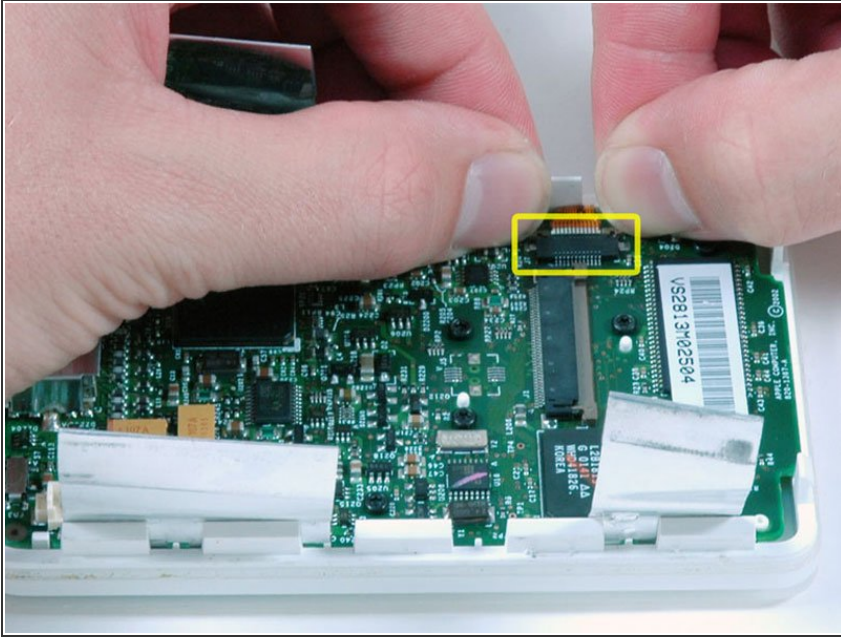
- Lift the blue hard drive mounting bracket out of the iPod.

Step 13



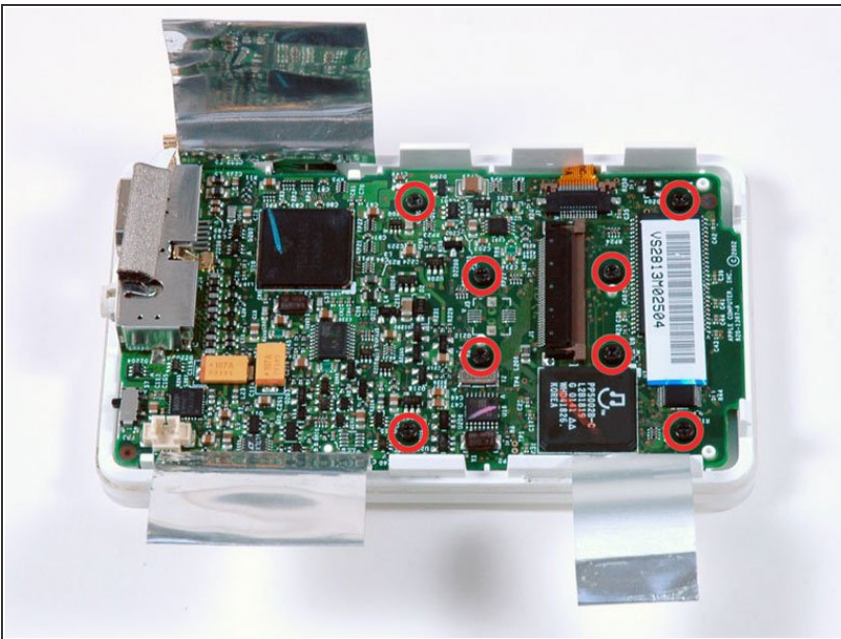
- Carefully disconnect the white battery connector from the logic board. Be sure to pull only on the connector itself and not on the cables.

Step 14



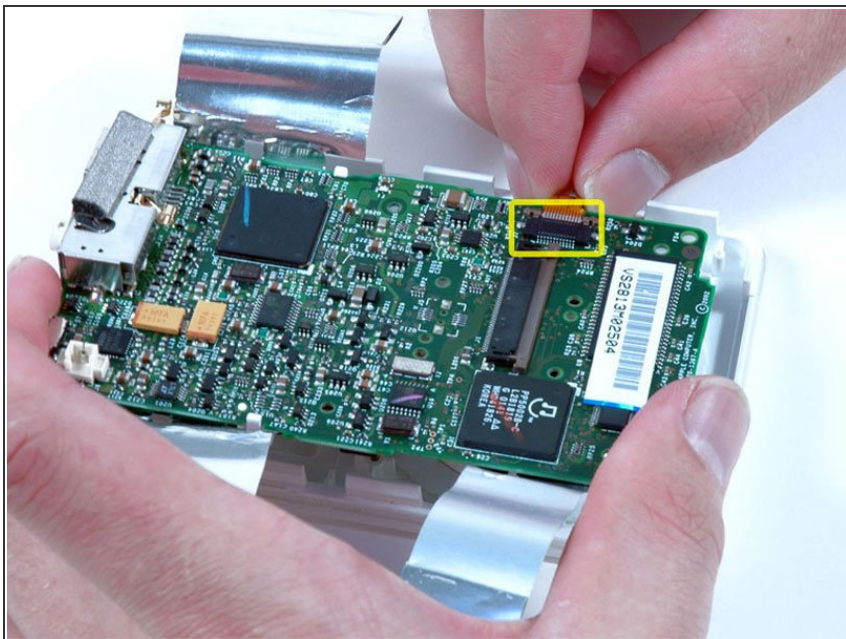
- **i** Like the hard drive connector, for the following step, you only need to move the connector about 2 mm. Pushing too hard or too far will damage the connector.
- Loosen the touch wheel connector by pulling the brown locking bar toward the side of the iPod using the tips of your fingers.

Step 15



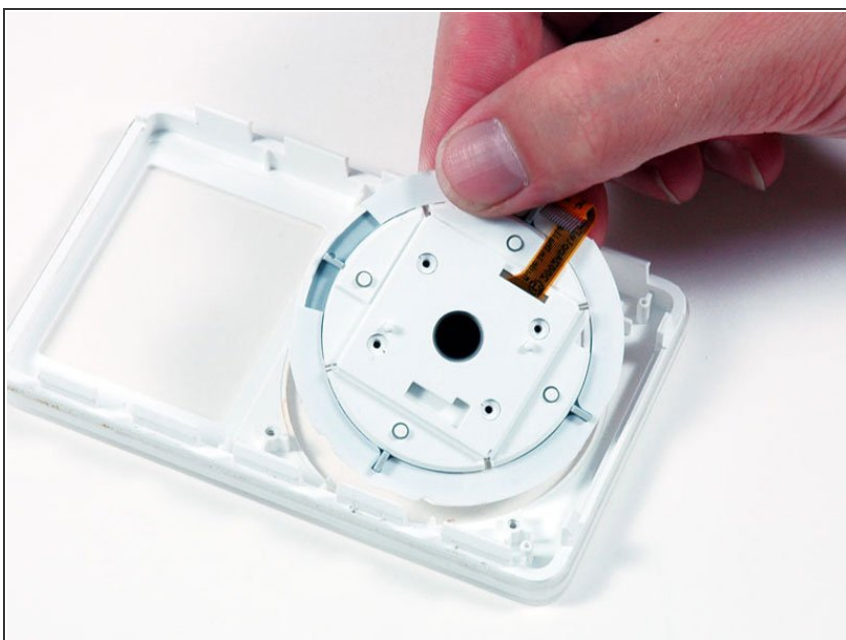
- Remove the 8 T6 Torx screws from the logic board.

Step 16



- Lift the logic board up enough to disconnect the orange touch wheel cable.
- Lift the logic board out of the iPod.

Step 17



- Lift the touch wheel out of the front panel

To reassemble your device, follow these instructions in reverse order.