



# Nintendo DSi Trigger Button/SD Board Assembly

Use this guide to replace the trigger buttons...

Written By: Walter Galan



# INTRODUCTION

Use this guide to replace the trigger buttons along with the SD card board cable.

## TOOLS:

Phillips #00 Screwdriver (1)  
iFixit Opening Tool (1)  
Spudger (1)

## PARTS:

Nintendo DSi SD Ribbon Cable (1)

## Step 1 — Battery Cover Removal



- Unscrew the two Phillips screws securing the battery cover to the lower case.
  - ① The screws remain captive to the battery cover.
- Grasp the battery cover and lift it out of the lower case.
  - ① If it's difficult to grasp, lightly tap the opposite side of the device.

## Step 2 — Taking out the Battery



- Using a spudger tool (or your fingernail), lift up the battery from the top.
  - ① There's a small tab on the top of the battery to make removal easier.
  - ① The liquid damage indicator sits underneath the battery. Pry gently, or you may damage the indicator.
- Grasp the battery and remove it from the DSi.

## Step 3 — Lower Case Assembly



- Two screws are hidden underneath two rubber feet highlighted in red.
- Use the tip of a spudger to pry the rubber feet out of the lower case.
- ① Depending on the age of your device, the rubber feet may crumble apart as you pry them out. If so, use a fine-tipped tool to scrape out any stuck pieces of rubber.

## Step 4



- Remove the following screws securing the lower case to the body of the DSi:
  - Six 5.2 mm Phillips #00 screws.
  - One 2.7 mm Phillips #00 screw.



## Step 5



- Insert the spudger in between the lower casing and lower panel near the top right corner of the DSi.
- Carefully run the spudger along the edge of the outer casing, creating an opening between the body and the casing.
- Continue running the spudger around the body of the DSi until the majority of the lower case has been separated.

## Step 6



- Carefully lift the lower casing from its bottom edge.

⚠ The lower case is still attached to the motherboard by the volume and SD board cable highlighted in red. Do not try to completely remove the lower case of the DSi yet.

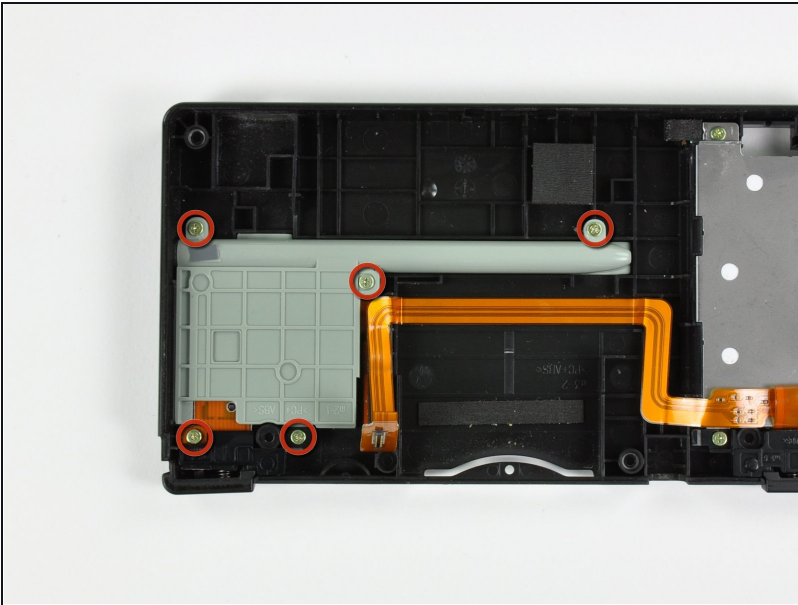
- Pry the volume and SD board cable up from its socket on the motherboard using a spudger.
- Once the cable is completely removed, then you may take off the entire outer casing.

## Step 7 — Stylus Housing



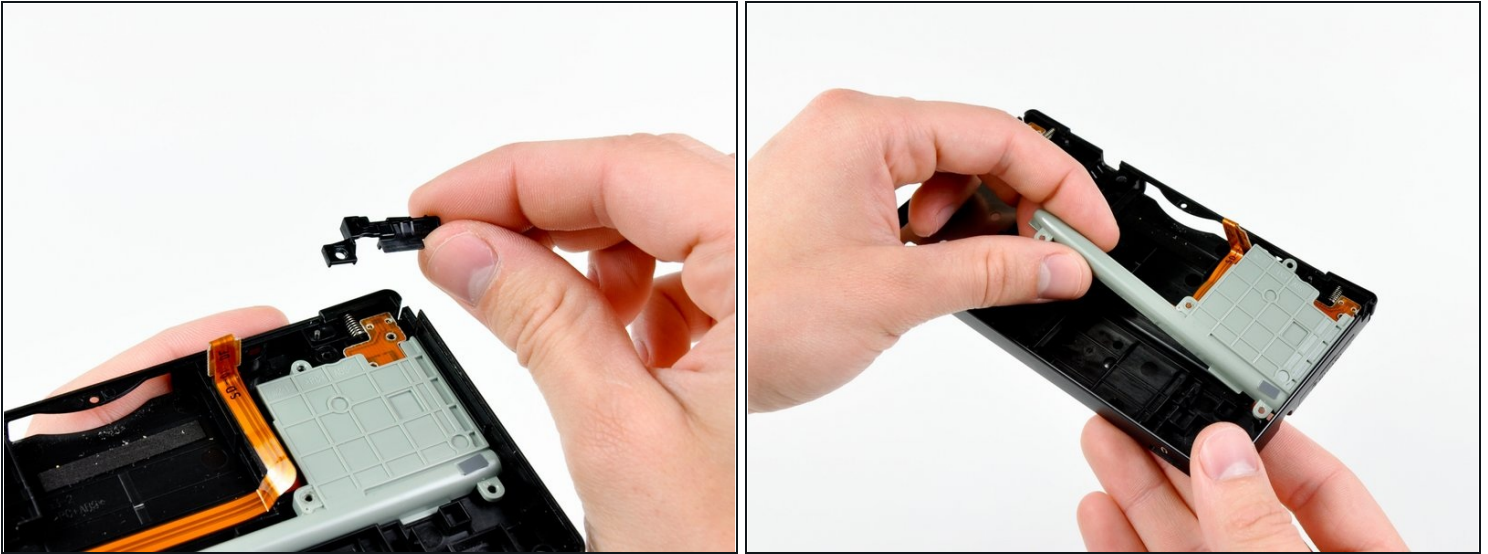
- Pull the stylus straight out its housing and remove it from the rear case.

## Step 8



- Remove the five 3.9 mm Phillips screws securing the stylus holder to the rear case.

## Step 9



- Lift and remove the left plastic protector from the DSi's rear case.
- Grasp the stylus holder from the left side and lift upwards to remove it from the DSi.

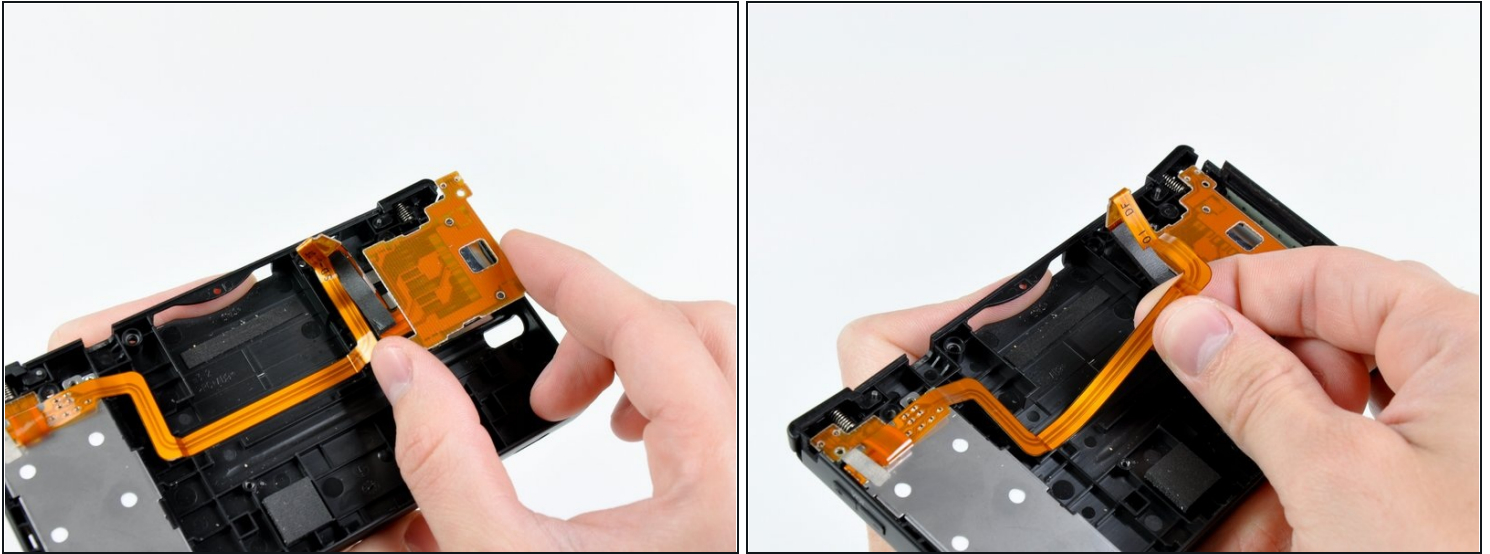
## Step 10 — Trigger Button and SD Board Assembly



- Lift the right trigger button cover out of the rear case.

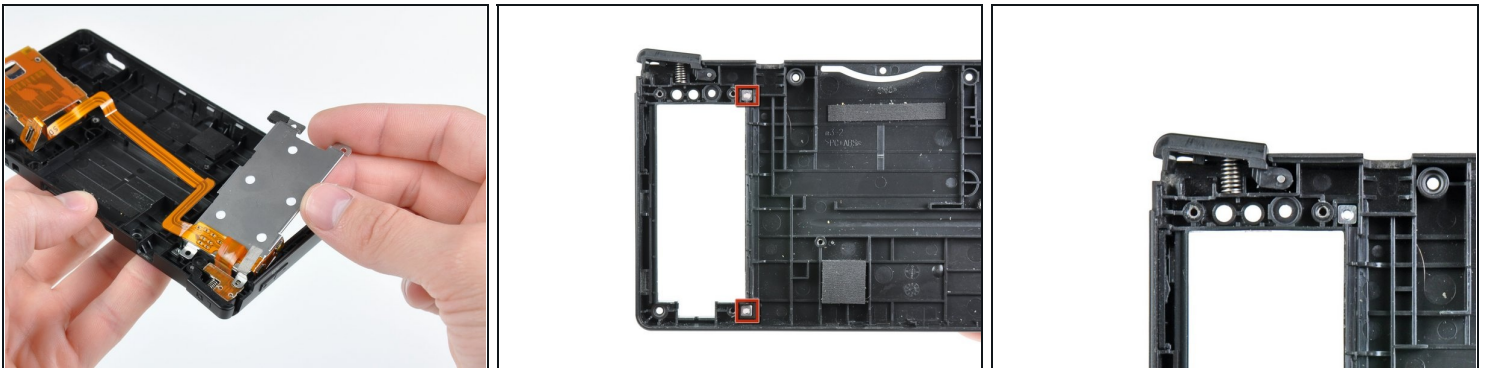


## Step 11



- Lift and dislodge the SD board from its housing within the rear case.
- Peel the trigger buttons/SD board cable of its channel in the rear case.

## Step 12



- Lift the steel battery tray out of the lower case and remove the trigger button/SD board assembly.
- ☑ When removing the trigger button/SD board assembly, don't lose the two steel nuts (highlighted in red) inserted into the lower case.
- If your trigger button happens to fall apart during disassembly, the third picture shows its correct installed orientation. Be sure the spring is installed in the position shown, and that the two trigger button covers are unique to the side they are supposed to be installed in.

---

To reassemble your device, follow these instructions in reverse order.